

Product datasheet for RC217730

KIF25 (NM_005355) Human Tagged ORF Clone

Product data:

Product Type:	Expression Plasmids
Product Name:	KIF25 (NM_005355) Human Tagged ORF Clone
Tag:	Myc-DDK
Symbol:	KIF25
Synonyms:	KNSL3
Mammalian Cell Selection:	Neomycin
Vector:	pCMV6-Entry (PS100001)
E. coli Selection:	Kanamycin (25 ug/mL)
ORF Nucleotide Sequence:	>RC217730 representing NM_005355 Red=Cloning site Blue=ORF Green=Tags(s)

TTTTGTAATACGACTCACTATAGGGCGGCCGGAATTCGTCGACTGGATCCGGTACCGAGGAGATCTGCC
GCC**CGATCGCC**

ATGACATGGACCTCAGGTCAGCTTCAGCGTGAGAAGCAGGCCAGGCCTGGGTCTGGAGCCGTCCTGGCCT
TCCCAGATGACAAGGACCTCAGGGTTTATGGTCCAGCAGAGTCTCAGAGCGCGTCTTTGGAGATGTGTG
CCCCCTACTCACTTCTCTTGGATGGTACAATGTTTGTGTTATGGCGTATGGACAGACGGGCAGCGGA
AAGAGCTATACCATGCTGGGACGCCATTCGGACGACGGCCCTGTTCTGCCGCTTGACCCACAGAGTGACT
TAGGAATTATCCCTAGAGTGGCTGAGGAGCTCTTCAGGCTTATTTGGAAAATACCTCAAGAAGCCAAA
GGTTGAAGTCTCCATAGTGGAAGTTTACAATAATGACATTTTTGACCTTCTGGCCAAAGACAGCATTGCA
GCAGTGTCTGGGGTCAAGCGTGAGGTGGTGACAGCCAAGGATGGACGGACAGAGGTTGCGCTGCTGGCCT
CTGAGGCTGTCTGGCAGCGCCTCGAAACTGATGGAGCTCGTTTATGGAGGTCTGCAGCTCAGGGCGAAGCA
CCCCACCTGGTGACCGCGGATTCCTCCAGGTCTCACCTGATAATTACGGTGACTCTAACACAGCCTCC
TGCTCTGACAGCACTGCAGACCAAGCCTGCAGTGCCACCTCCCCAGGGAGCAAACAGAGGCAGGAAGGG
CAGGAAGGAGCCGAGAGCTTCTCAAGGGGCTTGGCTCCACAGCTGGTTCCTGGGAACCCCGCAGGGCA
TGCGGAGCAGGTGCAGGCTCGACTACAGCTCGTGGACTCGGCCGGCAGCGAGTGCCTGGAGGCGATGCC
AAGTTACTGGTGATTCTCTGCATTTCTCCAGCCAGAGGCACCTGGCACAGACGTTGCAGGGCCTGGGTT
TCGGGATCCGAGCTCGGCAAGTCCAGCGAGGCCCTGCCGAAAGAAGCCGCCAGCTCCAAACGGAGGG
GAAGAGGAGGCCGGAT

ACGCGTACGCGGCCGCTCGAGCAGAACTCATCTCAGAAGAGGATCTGGCAGCAAATGATATCCTGGATT
ACAAGGATGACGACGATAAGGTTTAA



[View online »](#)

Protein Sequence: >RC217730 representing NM_005355
Red=Cloning site Green=Tags(s)

MTWTSGQLQREKQARPGSGAVLAFPDDKDLRVYGPAESQSAVFGDVCPLLTSLLDGYNVCVMAYGQTGSG
 KSYTMLGRHSDDGPVLPDPQSDLGIIPRVAEELFRLILENTRSPPKVEVSIIVEVYNNDFDILLAKDSIA
 AVSGVKREVVTAKDGRTEVALLASEAVGSASKLMELVHGGLQLRAKHPTLVHADSSRSHLIITVTLTTAS
 CSDSTADQACSATLPREQTEAGRAGRSRRASQGALAPQLVPGNPAGHAEQVQARLQLVDSAGSECVGGDA
 KLLVILCISPSQRHLAQLLQGLGFGIRARQVQRGPARKKPPSSQTEGKRRPD

TRTRPLEQKLISEEDLAANDILDYKDDDDKV

Chromatograms: https://cdn.origene.com/chromatograms/mk6468_g09.zip

Restriction Sites: SgfI-MluI

Cloning Scheme:



ACCN: NM_005355

ORF Size: 996 bp

OTI Disclaimer: The molecular sequence of this clone aligns with the gene accession number as a point of reference only. However, individual transcript sequences of the same gene can differ through naturally occurring variations (e.g. polymorphisms), each with its own valid existence. This clone is substantially in agreement with the reference, but a complete review of all prevailing variants is recommended prior to use. [More info](#)

OTI Annotation: This clone was engineered to express the complete ORF with an expression tag. Expression varies depending on the nature of the gene.

Components: The ORF clone is ion-exchange column purified and shipped in a 2D barcoded Matrix tube containing 10ug of transfection-ready, dried plasmid DNA (reconstitute with 100 ul of water).

Reconstitution Method:

1. Centrifuge at 5,000xg for 5min.
2. Carefully open the tube and add 100ul of sterile water to dissolve the DNA.
3. Close the tube and incubate for 10 minutes at room temperature.
4. Briefly vortex the tube and then do a quick spin (less than 5000xg) to concentrate the liquid at the bottom.
5. Store the suspended plasmid at -20°C. The DNA is stable for at least one year from date of shipping when stored at -20°C.

RefSeq: [NM_005355.3](#), [NP_005346.3](#)

RefSeq Size: 1354 bp

RefSeq ORF: 999 bp

Locus ID: 3834

UniProt ID: [Q9UIL4](#)

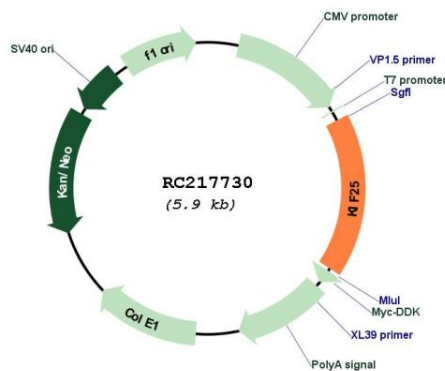
Cytogenetics: 6q27

Protein Families: Druggable Genome

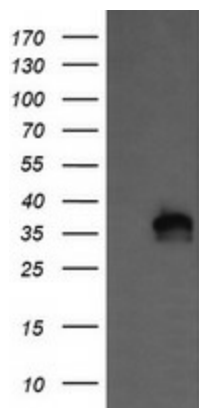
MW: 35.1 kDa

Gene Summary: The protein encoded by this gene is a member of the kinesin-like protein family. Protein family members are microtubule-dependent molecular motors that transport organelles within cells and move chromosomes during cell division. However, the particular function of this gene product has not yet been determined. Two alternatively spliced transcript variants which encode products have been described. Other splice variants have been found that lack exon 2 and the initiation codon for translation. [provided by RefSeq, Jul 2008]

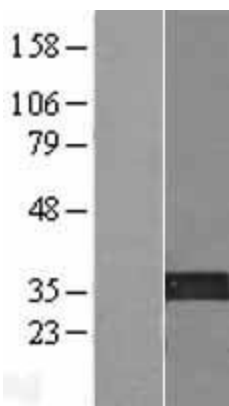
Product images:



Circular map for RC217730



HEK293T cells were transfected with the pCMV6-ENTRY control (Cat# [PS100001], Left lane) or pCMV6-ENTRY KIF25 (Cat# RC217730, Right lane) cDNA for 48 hrs and lysed. Equivalent amounts of cell lysates (5 ug per lane) were separated by SDS-PAGE and immunoblotted with anti-KIF25 (Cat# [TA505425]). Positive lysates [LY417362] (100ug) and [LC417362] (20ug) can be purchased separately from OriGene.



Western blot validation of overexpression lysate (Cat# [LY417362]) using anti-DDK antibody (Cat# [TA50011-100]). Left: Cell lysates from untransfected HEK293T cells; Right: Cell lysates from HEK293T cells transfected with RC217730 using transfection reagent MegaTran 2.0 (Cat# [TT210002]).