

## Product datasheet for **RC217721**

### SEPTIN14 (NM\_207366) Human Tagged ORF Clone

#### Product data:

Product Type:	Expression Plasmids
Product Name:	SEPTIN14 (NM_207366) Human Tagged ORF Clone
Tag:	Myc-DDK
Symbol:	SEPTIN14
Synonyms:	SEPT14
Mammalian Cell Selection:	Neomycin
Vector:	pCMV6-Entry (PS100001)
E. coli Selection:	Kanamycin (25 ug/mL)



[View online »](#)

**ORF Nucleotide Sequence:**

>RC217721 representing NM\_207366  
 Red=Cloning site Blue=ORF Green=Tags(s)

TTTTGTAATACGACTCACTATAGGGCGGCCGGAATTCGTCGACTGGATCCGGTACCGAGGAGATCTGCC  
 GCC**CGGATCGCC**

ATGGCAGAAAGAACAATGGCTATGCCACACAAATACCTGCTGATGGAGATACACAAAAAGAAAATAATA  
 TTCGTTGTTAACTACGATTGGACATTTTGGTTTTGAATGTTTGCCCAATCAGTTGGTGAGCAGATCTAT  
 CCGACAAGGATCACTTTTAATATTCTCTGTGTGGGGGAGACTGGAATTGAAAAATCGACTGATAGAC  
 ACATTGTTAATACTAATTGAAAGATAACAAATCCTCACATTTTACTCAAATGTTGGACTTCAAATTC  
 AGACATATGAACTTCAGGAAAGCAATGTTCAAGTTGAAATGACTGTTGTGGAGACAGTAGGGTATGGTGA  
 TCAAATAGACAAAGAAGCCAGCTACCAACCAATAGTTGACTACATAGATGCCCAATTTGAGGCCTATCTT  
 CAAGAAGAACTGAAGATTAACGTTCTTGTGTTGAGTACCATGATTCTCGCGTCCACGTGTGTCTTTACT  
 TCATTTACCTACAGGACATTCCTGAAGTCTCTTGATCTATTAACAATGAAGAACCCTTGACAGTAAGGT  
 GAATATTATACCACTGATTGCCAAGCAGACACTATTTCTAAAAATGATTTACAGACGTTTAAAGAATAAG  
 ATAATGAGTGAATTGATTAGCAATGGCATCCAGATATATCAGCTCCCAACAGATGAAGAACTGCTGCTC  
 AAGCGAACTCCTCAGTTAGTGGGCTGTTACCCTTTGCTGTGGTAGGGAGTACAGATGAAGTGAAAGTTGG  
 AAAAAGGATGGTCAGAGGCCGCTCACTACCCTTGGGGAGTTTTGCAAGTGGAAAATGAAAATCACTGTGAC  
 TTCGTTAAGCTCCGAGATATGCTTCTTTGTACCAATATGGAAAATCTAAAAGAAAAAACCACACTCAGC  
 ACTATGAATGTTATAGGTACAAAAACTGCAGAAAATGGGCTTTACAGATGTGGGTCCAAACAACCAGCC  
 AGTTAGTTTTCAAGAAATCTTTGAAGCCAAAAGACAAGAGTTCTATGATCAATGTCAGAGGGAAGAAGAA  
 GAGTTGAAACAGAGATTTATGCAGCGAGTCAAGGAGAAAGAAGCAACATTTAAAGAAGCTGAAAAAGAGC  
 TGCAGGACAAGTTCGAGCATCTTAAAATGATTCAACAGGAGGAGATAAGGAAGCTCGAGGAAGAGAAAAA  
 ACAACTGGAAGGAGAAATCATAGATTTTTATAAAATGAAAGCTGCCTCCGAAGCACTGCAGACTCAGCTG  
 AGCACCGATACAAAGAAAGACAAACATCGTAAGAAA

**ACGCGT**ACGCGGCCGCTCGAGCAGAAACTCATCTCAGAAGAGGATCTGGCAGCAATGATATCCTGGATT  
 ACAAGGATGACGACGATAAGGTTTAA

**Protein Sequence:**

>RC217721 representing NM\_207366  
 Red=Cloning site Green=Tags(s)

MAERTMAMPTQIPADGDTQKNNIRCLTTIGHFGFECLPNQLVSRISIRQGFTFNILCVGETGIGKSTLID  
 TLFNTNLKDNKSSHFYSNVGLQIQTYELQESNVQLKLVVETVGYGDQIDKEASYQPIVDYIDAQFEAYL  
 QEELKIKRSLFEYHDSRVHVCLYFISPTGHSLKSLDLLTMKNLDSKVNIIPLIAKADTISKNDLQTFKNK  
 IMSELSNGIQIYQLPTDEETAQAANSSVSGLLPFAVVGSTDEVKVGKRMVGRHYPWGLQVENENHCD  
 FVKLRDMLLCTNMENLKEKTHQHYECYRYQKLQKMGFTDVGPNQPVSFQEIFEAKRQEFYDQCQREEE  
 ELKQRFMQRVKEEATFKEAEKELQDKFEHLKMIQQEEIRKLEEEKKQLEGEIIDFYKMKAASEALQTL  
 STDTKKDKHRKK

**TR**TRPLEQKLISEEDLAANDILDYKDDDDKV

**Chromatograms:**

[https://cdn.origene.com/chromatograms/mk8016\\_d07.zip](https://cdn.origene.com/chromatograms/mk8016_d07.zip)

**Restriction Sites:**

Sgfl-Mlul

**Cloning Scheme:**

**ACCN:**

NM\_207366

**ORF Size:**

1296 bp

**OTI Disclaimer:**

Due to the inherent nature of this plasmid, standard methods to replicate additional amounts of DNA in E. coli are highly likely to result in mutations and/or rearrangements. Therefore, OriGene does not guarantee the capability to replicate this plasmid DNA. Additional amounts of DNA can be purchased from OriGene with batch-specific, full-sequence verification at a reduced cost. Please contact our customer care team at [custsupport@origene.com](mailto:custsupport@origene.com) or by calling 301.340.3188 option 3 for pricing and delivery.

The molecular sequence of this clone aligns with the gene accession number as a point of reference only. However, individual transcript sequences of the same gene can differ through naturally occurring variations (e.g. polymorphisms), each with its own valid existence. This clone is substantially in agreement with the reference, but a complete review of all prevailing variants is recommended prior to use. [More info](#)

**OTI Annotation:**

This clone was engineered to express the complete ORF with an expression tag. Expression varies depending on the nature of the gene.

**Components:**

The ORF clone is ion-exchange column purified and shipped in a 2D barcoded Matrix tube containing 10ug of transfection-ready, dried plasmid DNA (reconstitute with 100 ul of water).

**Reconstitution Method:**

1. Centrifuge at 5,000xg for 5min.
2. Carefully open the tube and add 100ul of sterile water to dissolve the DNA.
3. Close the tube and incubate for 10 minutes at room temperature.
4. Briefly vortex the tube and then do a quick spin (less than 5000xg) to concentrate the liquid at the bottom.
5. Store the suspended plasmid at -20°C. The DNA is stable for at least one year from date of shipping when stored at -20°C.

**RefSeq:**
[NM\\_207366.3](#)

RefSeq Size: 3785 bp

RefSeq ORF: 1299 bp

Locus ID: 346288

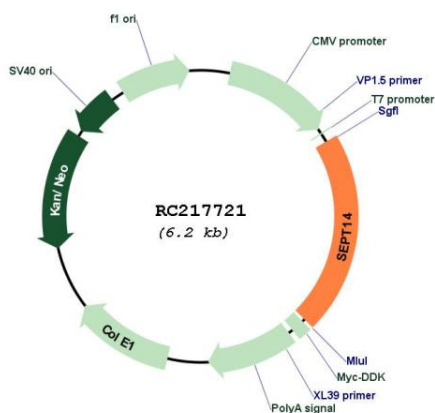
UniProt ID: [Q6ZU15](#)

Cytogenetics: 7p11.2

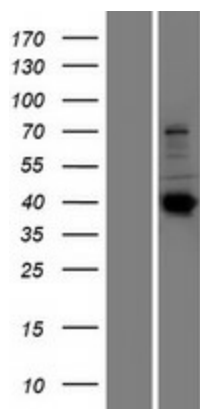
MW: 49.8 kDa

**Gene Summary:** SEPT14 is a member of the highly conserved septin family of GTP-binding cytoskeletal proteins implicated in membrane transport, apoptosis, cell polarity, cell cycle regulation, cytokinesis, and other cellular functions (Peterson et al., 2007 [PubMed 17922164]).[supplied by OMIM, Jul 2008]

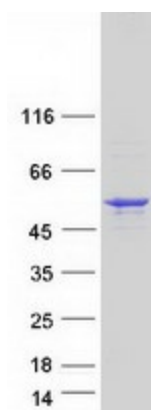
### Product images:



Circular map for RC217721



Western blot validation of overexpression lysate (Cat# [LY403987]) using anti-DDK antibody (Cat# [TA50011-100]). Left: Cell lysates from untransfected HEK293T cells; Right: Cell lysates from HEK293T cells transfected with RC217721 using transfection reagent MegaTran 2.0 (Cat# [TT210002]).



Coomassie blue staining of purified SEPTIN14 protein (Cat# [TP317721]). The protein was produced from HEK293T cells transfected with SEPTIN14 cDNA clone (Cat# RC217721) using MegaTran 2.0 (Cat# [TT210002]).