

Product datasheet for **RC217718**

TCF4 (NM_003199) Human Tagged ORF Clone

Product data:

Product Type:	Expression Plasmids
Product Name:	TCF4 (NM_003199) Human Tagged ORF Clone
Tag:	Myc-DDK
Symbol:	TCF4
Synonyms:	bHLHb19; CDG2T; E2-2; FECD3; ITF-2; ITF2; PTHS; SEF-2; SEF2; SEF2-1; SEF2-1A; SEF2-1B; SEF2-1D; TCF-4
Mammalian Cell Selection:	Neomycin
Vector:	pCMV6-Entry (PS100001)
E. coli Selection:	Kanamycin (25 ug/mL)



[View online »](#)

ORF Nucleotide
Sequence:

>RC217718 representing NM_003199
Red=Cloning site Blue=ORF Green=Tags(s)

TTTTGTAATACGACTCACTATAGGGCGGCCGGAATTCGTCGACTGGATCCGGTACCGAGGAGATCTGCC
GCCCGCATCGCC

ATGCATCACCAACAGCGAATGGCTGCCTTAGGGACGGACAAAGAGCTGAGTGATTTACTGGATTTACAGTG
CGATGTTTTACCTCCTGTGAGCAGTGGGAAAAATGGACCAACTTCTTTGGCAAGTGGACATTTTACTGG
CTCAAATGTAGAAGACAGAAGTAGCTCAGGGTCTGGGGGAATGGAGGACATCCAAGCCCGTCCAGGAAC
TATGGAGATGGGACTCCCTATGACCACATGACCAGCAGGGACCTTGGGTCACATGACAATCTCTCTCCAC
CTTTTGTCAATCCAGAATACAAAGTAAAAAGAAAGGGGCTCATACTCATCTTATGGGAGAGAATCAAA
CTTACAGGGTTGCCACCAGCAGAGTCTCCTTGGAGGTGACATGGATATGGGCAACCCAGGAACCCCTTTCG
CCCACAAACCTGGTCCCAGTACTATCAGTATTCTAGCAATAATCCCCGAAGGAGGCTCTTCCAGTA
GTGCCATGGAGGTACAGACAAAGAAAGTTCGAAAAGTTCCAGGTTTCCATCTTCAGTCTATGCTCC
ATCAGCAAGCACTGCCGACTACAATAGGGACTCGCCAGGCTATCCTTCCCAAACCCAGCAACCAGCACT
TTCCCTAGCTCCTTCTCATGCAAGATGGCCATCACAGCAGTGACCCTTGGAGCTCTCCAGTGGGATGA
ATCAGCCTGGCTATGCAGGAATGTTGGGCAACTTCTCATATTTCCACAGTCCAGCAGCTACTGTAGCCT
GCATCCACATGAACGTTTGGCTATCCATCACACTCCTCAGCAGACATCAATCCAGTCTTCTCCGATG
TCCACTTTCCATCGTAGTGGTACAAACCATTACAGCACCTTCTCCTGTACGCCTCCTGCCAACGGGACAG
ACAGTATAATGGCAAATAGAGGAAGCGGGCAGCCGCGAGCTCCCAGACTGGAGATGCTCTGGGGAAGC
ACTTGTTCGATCTATTCTCCAGATCACACTAACACAGCTTTTCATCAAACCTTCAACTCCTGTTGGC
TCTCCTCCATCTCTCAGCAGGCACAGCTGTTGGTCTAGAAATGGAGGACAGGCTCATCGTCTCCTA
ATTATGAAGGACCCTTACACTCTTTGCAAAGCCGAATTGAAGATCGTTTAGAAAGACTGGATGATGCTAT
TCATGTTCTCCGGAACCATGCAGTGGGCCATCCACAGCTATGCCTGGTGGTTCATGGGGACATGCATGGA
ATCATTGGACCTTCTCATAATGGAGCCATGGGTGGTCTGGGCTCAGGGTATGGAACCGGCCCTTTCTTCAG
CCAACAGACATTTACTCATGGTGGGACCCATCGTGAAGATGGCGTGGCCCTGAGAGGCAGCCATTTCTCT
TCTGCCAAACAGGTTCCGGTCCACAGCTTCTGTCCAGTCTGCGACTTCCCCTGACCTGAACCCACCC
CAGGACCCTTACAGAGGCATGCCACCAGGACTACAGGGGCAGAGTGTCTCCTCTGGCAGCTCTGAGATCA
AATCCGATGACGAGGGTATGAGAACCTGCAAGACACGAAATCTCGGAGGACAAGAAATAGATGACGA
CAAGAAGGATATCAAATCAATTACTAGCAATAATGACGATGAGGACCTGACACCAGAGCAGAAGGCAGAG
CGTGAGAAGGAGCGGAGGATGGCCAACAATGCCCGAGAGCGTCTGCGGGTCCGTGACATCAACGAGGCTT
TCAAAGAGCTCGCCCGCATGGTGCAGCTCCACCTCAAGAGTGACAAGCCCCAGACCAAGCTCCTGATCCT
CCACCAGGCGGTGGCCGTATCCTCAGTCTGGAGCAGCAAGTCCGAGAAAGGAATCTGAATCCGAAAGCT
GCGTGTCTGAAAAGAAGGGAGGAAGAGAAGGTGTCTCGGAGCCTCCCCCTCTCTCTTGGCCGGCCAC
ACCCTGGAATGGGAGACGCATCGAATCACATGGGACAGATG

ACGCGTACGCGGCCGCTCGAGCAGAACTCATCTCAGAAGAGGATCTGGCAGCAATGATATCCTGGATT
ACAAGGATGACGACGATAAGGTTTAA

Protein Sequence: >RC217718 representing NM_003199
Red=Cloning site Green=Tags(s)

MHHQQRMAALGTDKELSDLLDFSAMFSPVSSGKNGPTSLASGHFTGSNVEDRSSSGSWGNGGHPSPSRN
 YGDGTPYDHMTSRDLGSHDNLSPPFVNSRIQSKTERGSYSSYGRESNLQGCHQQLLGGDMDMGNPGLTSL
 PTKPGSQYYQYSSNNPRRRPLHSSAMEVQTKKVRKVPVPLPSSVYAPSASTADYNRDSPGYPSSKPATST
 FPSSFFMQDGHSSDPWSSSSGMNQPGYAGMLGNSSHIPQSSSYCSLHPHERLSYPSSHSSADINSSLPPM
 STFHRSGTNHYSTSSCTPPANGTDSIMANRGSAGSSQTGDALGKALASIYSPDHTNNSFSSNPSTPVG
 SPPSLSAGTAVWSRNGGQASSSPNYEGLHSLQSRIEDRLERLDDAIHVLRNHAVGPSTAMPGGHGMHG
 IIGPSHNGAMGGLGSGYGTLLSANRHSLMVGTHREDGVALRGSHSLLPNQVVPVQLPVQSATSPDLNPP
 QDPYRGMPPGLQGQSVSSGSSEIKSDDEGDELQDTKSSDKKLDKDKKIKSITSNDDDELTPQEAKAE
 REKERRMANNARERLRVRDINEAFKELGRMVQLHLKSDKPQTKLLILHQAVAVILSLEQQVRELRNLNPKA
 ACLKRREEEKVSSEPPPLSLAGPHPGMGDASNHMGMQ

TRTRPLEQKLISEEDLAANDILDYKDDDDKV

Chromatograms: https://cdn.origene.com/chromatograms/mk6162_e08.zip

Restriction Sites: SgfI-MluI

Cloning Scheme:



ACCN: NM_003199

ORF Size: 2001 bp

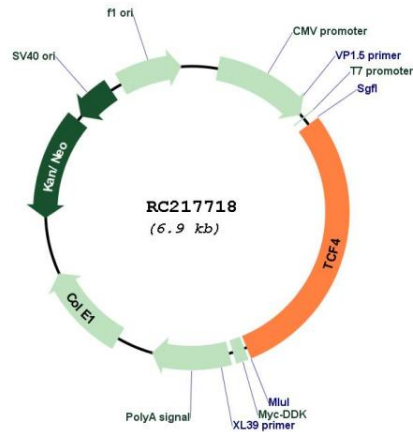
OTI Disclaimer: The molecular sequence of this clone aligns with the gene accession number as a point of reference only. However, individual transcript sequences of the same gene can differ through naturally occurring variations (e.g. polymorphisms), each with its own valid existence. This clone is substantially in agreement with the reference, but a complete review of all prevailing variants is recommended prior to use. [More info](#)

OTI Annotation: This clone was engineered to express the complete ORF with an expression tag. Expression varies depending on the nature of the gene.

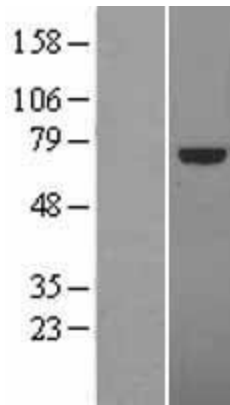
Components: The ORF clone is ion-exchange column purified and shipped in a 2D barcoded Matrix tube containing 10ug of transfection-ready, dried plasmid DNA (reconstitute with 100 ul of water).

Reconstitution Method:	<ol style="list-style-type: none">1. Centrifuge at 5,000xg for 5min.2. Carefully open the tube and add 100ul of sterile water to dissolve the DNA.3. Close the tube and incubate for 10 minutes at room temperature.4. Briefly vortex the tube and then do a quick spin (less than 5000xg) to concentrate the liquid at the bottom.5. Store the suspended plasmid at -20°C. The DNA is stable for at least one year from date of shipping when stored at -20°C.
RefSeq:	NM_003199.1 , NP_003190.1
RefSeq Size:	2500 bp
RefSeq ORF:	2004 bp
Locus ID:	6925
UniProt ID:	P15884
Cytogenetics:	18q21.2
Domains:	HLH
Protein Families:	Druggable Genome, ES Cell Differentiation/IPS, Transcription Factors
MW:	71.1 kDa
Gene Summary:	<p>This gene encodes transcription factor 4, a basic helix-loop-helix transcription factor. The encoded protein recognizes an Ephrussi-box ('E-box') binding site ('CANNTG') - a motif first identified in immunoglobulin enhancers. This gene is broadly expressed, and may play an important role in nervous system development. Defects in this gene are a cause of Pitt-Hopkins syndrome. In addition, an intronic CTG repeat normally numbering 10-37 repeat units can expand to >50 repeat units and cause Fuchs endothelial corneal dystrophy. Multiple alternatively spliced transcript variants that encode different proteins have been described. [provided by RefSeq, Jul 2016]</p>

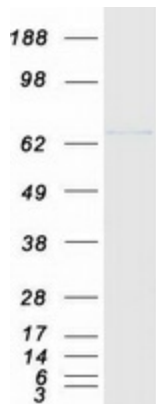
Product images:



Circular map for RC217718



Western blot validation of overexpression lysate (Cat# [LY401106]) using anti-DDK antibody (Cat# [TA50011-100]). Left: Cell lysates from untransfected HEK293T cells; Right: Cell lysates from HEK293T cells transfected with RC217718 using transfection reagent MegaTran 2.0 (Cat# [TT210002]).



Coomassie blue staining of purified TCF4 protein (Cat# [TP317718]). The protein was produced from HEK293T cells transfected with TCF4 cDNA clone (Cat# RC217718) using MegaTran 2.0 (Cat# [TT210002]).