

Product datasheet for RC217711

GDF 9 (GDF9) (NM_005260) Human Tagged ORF Clone

Product data:

| | |
|---------------------------|---|
| Product Type: | Expression Plasmids |
| Product Name: | GDF 9 (GDF9) (NM_005260) Human Tagged ORF Clone |
| Tag: | Myc-DDK |
| Symbol: | GDF 9 |
| Synonyms: | POF14 |
| Mammalian Cell Selection: | Neomycin |
| Vector: | pCMV6-Entry (PS100001) |
| E. coli Selection: | Kanamycin (25 ug/mL) |
| ORF Nucleotide Sequence: | >RC217711 representing NM_005260. Blue=ORF Red=Cloning site Green=Tag(s) |

```
GCTCGTTTGTAGTAACCGTCAGAATTTTGTAAACGACTCACTATAGGGCGCCGGGAATTCGTCGACTG
GATCCGGTACCGAGGAGATCTGCCGCCGCGATCGCC
ATGGCACGTCCTCAACAAATTCCTCCTTTGGTTTTGCTGCTTTGCCTGGCTGTGTTTTCTATTAGCCTT
GGTTCTCAGGCTTCTGGGGGAGAAGCTCAGATTGCTGCTAGTGTGAGTTGGAATCTGGGGCTATGCCT
TGGTCCTTGCTGCAGCATATAGATGAGAGAGACAGAGCTGGCCTCCTTCCCGCGCTTTTCAAAGTTCTA
TCTGTTGGGCGAGGTGGGTACCTAGGCTGCAGCCAGACTCCAGAGCTTGCCTACATGAAGAAGCTC
TATAAGACATATGCTACCAAGGAAGGGATTCTAAATCCAATAGAAGTCACTCTACAACACTGTTCCGG
CTTTCCACCCCTGTACCCGGCACAAGCAGGCTCCTGGAGACCAGGTAACAGGAATCCTTCCATCAGTG
GAAGTGTATTTAACCTGGATCGCATTACTACTGTTGAACACTTACTCAAGTCACTGCTTGTGTAACAAT
ATCAACAACACTCAGTTTCTTTTCTCTGCTGTCAAATGTGTGTGCAATCTAATGATAAAGGAGCCAAAG
TCTTCTAGCAGGACTCTCGGCAGAGCTCCATACTCATTACCTTTAACTCACAGTTTGAATTTGGAAAG
AAACACAAATGGATTGAGATTGATGTGACCAGCCTCCTTCAACCTTTAGTGGCCTCCAACAAGAGAAGT
ATTCACATGTCTATAAATTTTACTTGCATGAAAGACCAGCTGGAGCATCCTTCCAGCACAGAATGGTTTG
TTTAAACATGACTCTGGTGTCCCCCTCACTGATCTTATATTTGAATGACACAAGTGTCTCAGGCTTATCAC
AGCTGGTATTCCCTTCACTATAAAAGGAGGCCCTCCCAGGTCCTGACCAGGAGAGAAGTCTGTCTGCC
TATCCTGTGGGAGAAGAGGCTGCTGAGGATGGGAGATCTTCCCATCACCGTCACCCGAGAGGTGAGGAA
ACTGTGAGTTCTGAATTGAAGAAGCCCTTGGGCCAGCTTCTTCAATCTGAGTGAATACTTCCAGACAA
TTTCTTCTTCCCAAAATGAGTGTGAGCTCCATGACTTTAGACTTAGCTTATGTCAGCTGAAGTGGGAC
AACTGGATTGTGGCTCCGCACAGGTACAACCTCGATACTGTAAGGGGACTGTCCAAGGCAGTTGGA
CATCGGTATGGCTCTCCAGTTCACACCATGGTACAGAACATCATCTATGAGAAGCTGGACTCCTCAGTG
CCAAGACCGTCATGTGTACCTGCCAAATACAGCCCTTGAGTGTGTTTACCATTGAGCCCGATGGCTCA
ATTGCCTATAAAGAGTACGAAGATATGATAGCTACAAAGTGCACCTGTCGT
ACGCGTACGCGGCCGCTCGAGCAGAAACTCATCTCAGAAGAGGATCTGGCAGCAAATGATATCCTGGAT
TACAAGGATGACGACGATAAGGTTTAAACGGCCGCGC
```



[View online »](#)

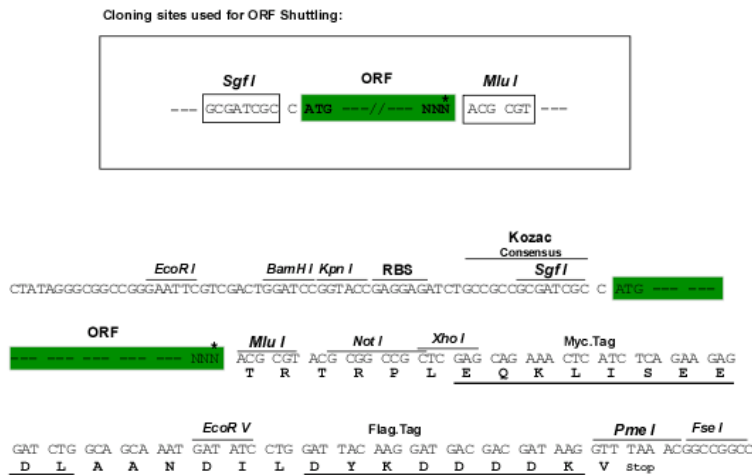
Protein Sequence: >Peptide sequence encoded by RC217711
 Blue=ORF Red=Cloning site Green=Tag(s)

MARPNKFLLWFCCFAWLCFPIISLGSQASGGEAQIAASAELESGAMPWSLLQHIDERDRAGLLPALFKVL
 SVGRGGSPRLQPDSRALHYMKLYKTYATKEGIPKSNRSHLYNTVRLFPTCRHKQAPGDQVTGILPSV
 ELLFNLDRIITTVHELLKSVLLYNINNSVSSAVKCVCNLMIKEPKSSSRTLGRAPYSFTFNSQFEGK
 KHKWIQIDVTSLLQPLVSNKRSIHMSINFTCMKDQLEHPSAQNGLFNMTLVSPSLILYLNDTSAQAYH
 SWYSLHYKRRPSQGPDQERSLSAYVGEAAEDGRSSHRRRGGQETVSSELKKPLGPASFNLSEYFRQ
 FLLPQNECELHDFRLSFSQLKWDNWIVAPHRYNPRYCKGDCPRAVGHRYGSPVHTMVQNIIEKLDSSV
 PRPSCVPAKYSPLSVLTIEPDGSIAYKEYEDMIATKCTCR
 TRTRPLEQKLISEEDLAANDILDYKDDDDKV

Chromatograms: https://cdn.origene.com/chromatograms/mk6554_d05.zip

Restriction Sites: SgfI-MluI

Cloning Scheme:



* The last codon before the Stop codon of the ORF

ACCN: NM_005260

ORF Size: 1362 bp

OTI Disclaimer: The molecular sequence of this clone aligns with the gene accession number as a point of reference only. However, individual transcript sequences of the same gene can differ through naturally occurring variations (e.g. polymorphisms), each with its own valid existence. This clone is substantially in agreement with the reference, but a complete review of all prevailing variants is recommended prior to use. [More info](#)

OTI Annotation: This clone was engineered to express the complete ORF with an expression tag. Expression varies depending on the nature of the gene.

Components: The ORF clone is ion-exchange column purified and shipped in a 2D barcoded Matrix tube containing 10ug of transfection-ready, dried plasmid DNA (reconstitute with 100 ul of water).

Reconstitution Method:

1. Centrifuge at 5,000xg for 5min.
2. Carefully open the tube and add 100ul of sterile water to dissolve the DNA.
3. Close the tube and incubate for 10 minutes at room temperature.
4. Briefly vortex the tube and then do a quick spin (less than 5000xg) to concentrate the liquid at the bottom.
5. Store the suspended plasmid at -20°C. The DNA is stable for at least one year from date of shipping when stored at -20°C.

RefSeq Size: 1779 bp

RefSeq ORF: 1365 bp

Locus ID: 2661

UniProt ID: [O60383](#)

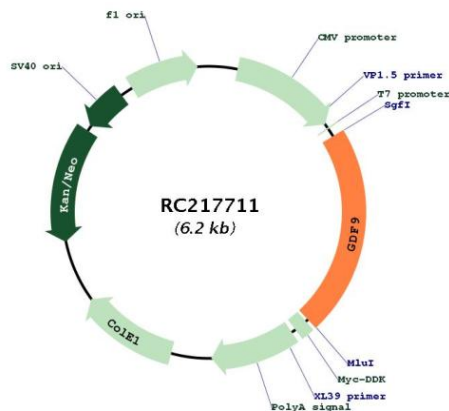
Cytogenetics: 5q31.1

Protein Families: Adult stem cells, Cancer stem cells, Druggable Genome, Embryonic stem cells, ES Cell Differentiation/IPS, Secreted Protein, Stem cell - Pluripotency, Stem cell relevant signaling - TGFb/BMP signaling pathway, Transmembrane

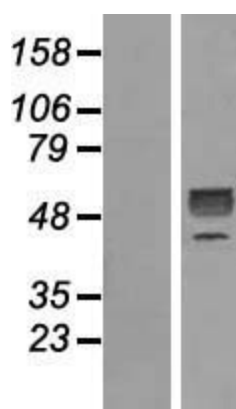
MW: 51.4 kDa

Gene Summary: This gene encodes a secreted ligand of the TGF-beta (transforming growth factor-beta) superfamily of proteins. Ligands of this family bind various TGF-beta receptors leading to recruitment and activation of SMAD family transcription factors that regulate gene expression. The encoded preproprotein is proteolytically processed to generate each subunit of the disulfide-linked homodimer. This protein regulates ovarian function. Reduced expression of this gene may be associated with polycystic ovary syndrome and mutations in this gene may be more common in mothers of dizygotic twins. [provided by RefSeq, Jul 2016]

Product images:



Circular map for RC217711



Western blot validation of overexpression lysate (Cat# [LY417406]) using anti-DDK antibody (Cat# [TA50011-100]). Left: Cell lysates from untransfected HEK293T cells; Right: Cell lysates from HEK293T cells transfected with RC217711 using transfection reagent MegaTran 2.0 (Cat# [TT210002]).