

Product datasheet for **RC217707**

SSH3BP1 (ABI1) (NM_005470) Human Tagged ORF Clone

Product data:

Product Type:	Expression Plasmids
Product Name:	SSH3BP1 (ABI1) (NM_005470) Human Tagged ORF Clone
Tag:	Myc-DDK
Symbol:	SSH3BP1
Synonyms:	ABI-1; ABLBP4; E3B1; NAP1BP; SSH3BP; SSH3BP1
Mammalian Cell Selection:	Neomycin
Vector:	pCMV6-Entry (PS100001)
E. coli Selection:	Kanamycin (25 ug/mL)



[View online »](#)

ORF Nucleotide Sequence:

>RC217707 representing NM_005470
 Red=Cloning site Blue=ORF Green=Tags(s)

TTTTGTAATACGACTCACTATAGGGCGGCCGGAATTCGTCGACTGGATCCGGTACCGAGGAGATCTGCC
 GCC**CGCATCGCC**

ATGGCAGAGCTGCAGATGTTACTAGAGGAGGAGATCCCGTCTGGCAAGAGGGCGCTGATCGAGAGTTACC
 AGAACCTGACTCGGGTGGCAGACTACTGTGAAAACAACACTACATACAGGCTACAGACAAGAGAAAAGCTTT
 AGAGGAGACCAAAGCCTATACAACCCAATCTCTAGCTAGTGTGCTTATCAAATAAATGCATTGGCCAAC
 AATGTAAGTCCAGTTGCTGGATATCCAAGCCTCTCAGCTTCGGAGAATGGAGTCTCCATCAATCATATCT
 CACAGACTGTGGATATTCATAAGGAGAAAGTGGCACAAGAGAGATTGGTATTTTGACAACAAAATAAGAA
 TACATCAAGAACTCACAAAATAATAGCACCTGCGAATATGGAGCGCCCTGTAAGGTATATTCGGAACCT
 ATCGATTACACAGTTCTGGATGATGTGGCCATGGTGTCAAGTGGCTAAAAGCCAAGCATGGAAATAACC
 AGCCTGCAAGAAGTGGCACACTGTGAGAACAAATCCTCTACTCAGAAACCGCCAAGTCTCCCATGTC
 AGGCCGGGAACACTGGGACGGAATACTCCTTATAAAACCTGGAACCTGTTAAACCCCAACAGTTCTCT
 AATGACTATATGACCAGTCTGCTAGGCTTGGAAAGTCAAGTCCAGGAGGACAGCATCTTTAAATC
 AGAGACCAAGGACACACAGTGAAGTAGTGGAGGAAGTGAAGTGCAGAAAACAGTGGTAGCAGTAGTAT
 TGGCATTCCCATTGCTGTGCCTACACCTTCGCCACCCACTATTGGACCAGCCCGGGCTCAGCTCCTGGT
 TCCCAGTATGGCACAATGACCAGGCAGATATCTCGACACAACCTACTACTTCTTCGACATCTTCTGGTG
 GATACAGACGAAGTCCCTCTGTGACTGTCAATTTCTGCTCAGCCTCATGTTAATGGAGGTCCACTTTA
 TTCTCAAATTCATTTGCTGATAGTCCAACCTCCACCGCCACCCTCCACCAGATGACATTTCCATGTTT
 GATGACTCTCCACCTCCCCACCACCACCAGTGGATTATGAAGATGAGGAGGCTGCAGTAGTTTCAAT
 ATATGATCCATATGCAGATGGGATCCTGCTGGGCCCAAGAATTATATTGAGAAAGTTGTTGCAAT
 ATATGATTATACAAAAGACAAGGATGATGAGCTGTCATTTATGGAGGGTGAATCATTTATGTTATAAAG
 AAGAATGATGATGGCTGGTATGAAGGAGTCTGCAATCGAGTACTGGTCTGTTCCCTGGAACTATGTTG
 AATCAATCATGCACTATACTGAT

ACGCGTACGCGGCCGCTCGAGCAGAAACTCATCTCAGAAGAGGATCTGGCAGCAATGATATCCTGGATT
 ACAAGGATGACGACGATAAGGTTTAA

Protein Sequence:

>RC217707 representing NM_005470
 Red=Cloning site Green=Tags(s)

MAELQMLLEEEIPSGKRALIESYQNLTRVADYCENNYIQATDKRKALEETKAYTTQSLASVAYQINALAN
 NVLQLLDIQAQLRRMESSINHISQTVDIHKEKVARREIGILTNNKNTSRTHKIIAPANMERPVRYIRKP
 IDYTVLDDVGHGKWLKAKHGNQPARTGTLRTNPPTQKPPSPPMSSGRGTLGRNTPYKTLPEVKPPTVP
 NDYMTSPARLGSQHSRGRTASLNQRPRTHSGSSGSGSRENSGSSSIGIPIAVPTSPPTIGPAPGSAPG
 SQYGTMRQISRHNSTTSSTSSGGYRRTPSVTAQFSAQPHVNGGPLYSQNSIADSPTPPPPPPDDIPMF
 DDPSPPPPPVYDEEAAVVQYNDPYADGPAWAPKNYIEKVVAIYDYTKDKDEL SFMEGAIIVYIK
 KNDDGWYEGVGNRVTGLFPGNYVESIMHYTD

TRTRPLEQKLISEEDLAANDILDYKDDDDKV

Chromatograms:

https://cdn.origene.com/chromatograms/mg2590_a01.zip

Restriction Sites:

Sgfl-Mlul

Cloning Scheme:


ACCN: NM_005470

ORF Size: 1524 bp

OTI Disclaimer: The molecular sequence of this clone aligns with the gene accession number as a point of reference only. However, individual transcript sequences of the same gene can differ through naturally occurring variations (e.g. polymorphisms), each with its own valid existence. This clone is substantially in agreement with the reference, but a complete review of all prevailing variants is recommended prior to use. [More info](#)

OTI Annotation: This clone was engineered to express the complete ORF with an expression tag. Expression varies depending on the nature of the gene.

Components: The ORF clone is ion-exchange column purified and shipped in a 2D barcoded Matrix tube containing 10ug of transfection-ready, dried plasmid DNA (reconstitute with 100 ul of water).

Reconstitution Method:

1. Centrifuge at 5,000xg for 5min.
2. Carefully open the tube and add 100ul of sterile water to dissolve the DNA.
3. Close the tube and incubate for 10 minutes at room temperature.
4. Briefly vortex the tube and then do a quick spin (less than 5000xg) to concentrate the liquid at the bottom.
5. Store the suspended plasmid at -20°C. The DNA is stable for at least one year from date of shipping when stored at -20°C.

RefSeq Size: 3725 bp

RefSeq ORF: 1527 bp

Locus ID: 10006

UniProt ID: [Q8IZP0](#)

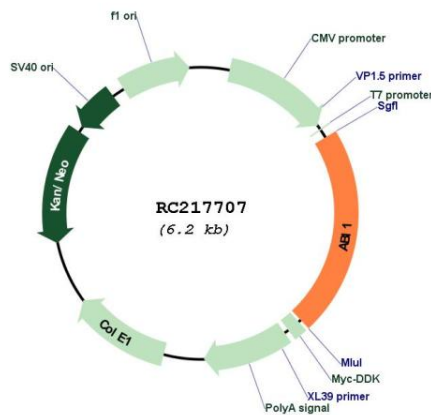
Cytogenetics: 10p12.1

Domains: SH3

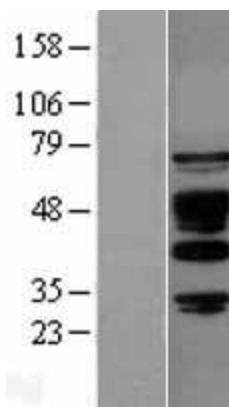
MW: 55.1 kDa

Gene Summary: This gene encodes a member of the Abelson-interactor family of adaptor proteins. These proteins facilitate signal transduction as components of several multiprotein complexes, and regulate actin polymerization and cytoskeletal remodeling through interactions with Abelson tyrosine kinases. The encoded protein plays a role in macropinocytosis as a component of the WAVE2 complex, and also forms a complex with EPS8 and SOS1 that mediates signal transduction from Ras to Rac. This gene may play a role in the progression of several malignancies including melanoma, colon cancer and breast cancer, and a t(10;11) chromosomal translocation involving this gene and the MLL gene has been associated with acute myeloid leukemia. Alternatively spliced transcript variants encoding multiple isoforms have been observed for this gene, and a pseudogene of this gene is located on the long arm of chromosome 14. [provided by RefSeq, Sep 2011]

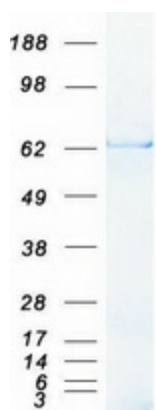
Product images:



Circular map for RC217707



Western blot validation of overexpression lysate (Cat# [LY401677]) using anti-DDK antibody (Cat# [TA50011-100]). Left: Cell lysates from untransfected HEK293T cells; Right: Cell lysates from HEK293T cells transfected with RC217707 using transfection reagent MegaTran 2.0 (Cat# [TT210002]).



Coomassie blue staining of purified ABI1 protein (Cat# [TP317707]). The protein was produced from HEK293T cells transfected with ABI1 cDNA clone (Cat# RC217707) using MegaTran 2.0 (Cat# [TT210002]).