

## Product datasheet for RC217697

### CMTM4 (NM\_178818) Human Tagged ORF Clone

#### Product data:

**Product Type:** Expression Plasmids  
**Product Name:** CMTM4 (NM\_178818) Human Tagged ORF Clone  
**Tag:** Myc-DDK  
**Symbol:** CMTM4  
**Synonyms:** CKLFSF4  
**Mammalian Cell Selection:** Neomycin  
**Vector:** pCMV6-Entry (PS100001)  
**E. coli Selection:** Kanamycin (25 ug/mL)  
**ORF Nucleotide Sequence:** >RC217697 representing NM\_178818  
Red=Cloning site Blue=ORF Green=Tags(s)

TTTTGTAATACGACTCACTATAGGGCGCCGGAATTCGTCGACTGGATCCGGTACCGAGGAGATCTGCC  
GCC**CGATCGC**C

ATGCGGAGCGGCGAGGAGCTGGACGGCTTCGAGGGCGAGGCTCGAGCACCTCCATGATCTCGGGCGCCA  
GCAGCCCGTACCAGCCACCACCGAGCCGGTGAGCCAGCGCCGCGGGCTGGCCGGCTGCGCTGCGACCC  
CGACTACCTGCGCGGCGCTCGCCGCCTCAAGGTCGCCAAGTGATCTTGGCCCTGATTGCATTCATC  
TGCATAGAGACCATCATGGCATGCTCCCGTGTGAAGGCCTCTACTTTTTGAGTTTGTGAGCTGCAGTG  
CGTTTGTGGTACTGGCGTCTTGCTGATTATGTTCACTCAACCTGCACATGAGGATCCCCAGATCAA  
CTGGAATCTGACAGATTTGGTCAACACTGGACTCAGCGCTTTCCTTTTCTTTATTGCTTCAATCGTACTG  
GCTGCTTTAAACCATAGAGCCGGAGCAGAAATGCTGCCGTGATATTTGGCTTCTTGCGACTGCGGCAT  
ATGCAGTGAACACATTCCTGGCAGTGCAGAAATGGAGAGTCAGCGTCCGCCAGCAGACCAATGACTA  
CATCCGAGCCCGCAGGAGTCCAGGGATGTGGACAGTCGCCCTGAGATCCAGCGCCTGGACACTTTTTCC  
TACTCCAAAACGTAACAGTAAGGAAAAATCACCCACAAACCTGCTGAGTTTGAATCACTGGCAACTTG  
CC

**ACGCGT**ACGCGGCGCTCGAGCAGAACTCATCTCAGAAGAGGATCTGGCAGCAAATGATATCCTGGATT  
ACAAGGATGACGACGATAAGGTTTAA



[View online »](#)

**Protein Sequence:** >RC217697 representing NM\_178818  
Red=Cloning site Green=Tags(s)

MRSGEELDGFEGEASSTSMISGASSPYQPTTEPVSRRLAGLRCDPDYLRGALGRLKVAQVILALIAFI  
 CIETIMACSPCEGLYFFEFVSCSAFVVTGVLLIMFSLNLHMRIPQINWNLTDLVNTGLSAFLFFIASIVL  
 AALNHRAGAEIAAVIFGFLATAAYAVNTFLAVQKWRVSVRQQSTNDYIRARTESRDVDSRPEIQRLDTFS  
 YSTNVTVRKKSPTNLLSLNHWQLA

TRTRPLEQKLISEEDLAANDILDYKDDDDKV

**Chromatograms:** [https://cdn.origene.com/chromatograms/mk8013\\_d06.zip](https://cdn.origene.com/chromatograms/mk8013_d06.zip)

**Restriction Sites:** SgfI-MluI

**Cloning Scheme:**



**ACCN:** NM\_178818

**ORF Size:** 702 bp

**OTI Disclaimer:** The molecular sequence of this clone aligns with the gene accession number as a point of reference only. However, individual transcript sequences of the same gene can differ through naturally occurring variations (e.g. polymorphisms), each with its own valid existence. This clone is substantially in agreement with the reference, but a complete review of all prevailing variants is recommended prior to use. [More info](#)

**OTI Annotation:** This clone was engineered to express the complete ORF with an expression tag. Expression varies depending on the nature of the gene.

**Components:** The ORF clone is ion-exchange column purified and shipped in a 2D barcoded Matrix tube containing 10ug of transfection-ready, dried plasmid DNA (reconstitute with 100 ul of water).

**Reconstitution Method:**

1. Centrifuge at 5,000xg for 5min.
2. Carefully open the tube and add 100ul of sterile water to dissolve the DNA.
3. Close the tube and incubate for 10 minutes at room temperature.
4. Briefly vortex the tube and then do a quick spin (less than 5000xg) to concentrate the liquid at the bottom.
5. Store the suspended plasmid at -20°C. The DNA is stable for at least one year from date of shipping when stored at -20°C.

**Note:** Plasmids are not sterile. For experiments where strict sterility is required, filtration with 0.22um filter is required.

**RefSeq:** [NM\\_178818.3](#)

**RefSeq Size:** 3430 bp

**RefSeq ORF:** 705 bp

**Locus ID:** 146223

**UniProt ID:** [Q8IZR5](#)

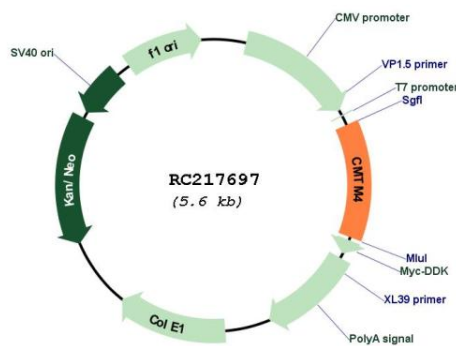
**Cytogenetics:** 16q21-q22.1

**Protein Families:** Transmembrane

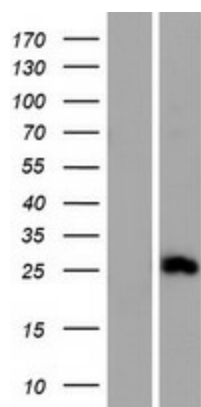
**MW:** 25.6 kDa

**Gene Summary:** This gene belongs to the chemokine-like factor gene superfamily, a novel family that is similar to the chemokine and the transmembrane 4 superfamilies of signaling molecules. This gene is one of several chemokine-like factor genes located in a cluster on chromosome 16. Alternatively spliced transcript variants encoding different isoforms have been identified. [provided by RefSeq, Jul 2008]

### Product images:



Circular map for RC217697



Western blot validation of overexpression lysate (Cat# [LY405803]) using anti-DDK antibody (Cat# [TA50011-100]). Left: Cell lysates from untransfected HEK293T cells; Right: Cell lysates from HEK293T cells transfected with RC217697 using transfection reagent MegaTran 2.0 (Cat# [TT210002]).