

Product datasheet for RC217696L4

SIAT4A (ST3GAL1) (NM_003033) Human Tagged Lenti ORF Clone

Product data:

Product Type:	Expression Plasmids
Product Name:	SIAT4A (ST3GAL1) (NM_003033) Human Tagged Lenti ORF Clone
Tag:	mGFP
Symbol:	SIAT4A
Synonyms:	1; Gal-NAc6S; SIAT4A; SIATFL; ST3GalA; ST3GalA.1; ST3GalIA; ST3O
Mammalian Cell Selection:	Puromycin
Vector:	pLenti-C-mGFP-P2A-Puro (PS100093)
E. coli Selection:	Chloramphenicol (34 ug/mL)
ORF Nucleotide Sequence:	The ORF insert of this clone is exactly the same as(RC217696).
Restriction Sites:	SgfI-MluI
Cloning Scheme:	

Cloning sites used for ORF Shuttling:



* The last codon before the Stop codon of the ORF.

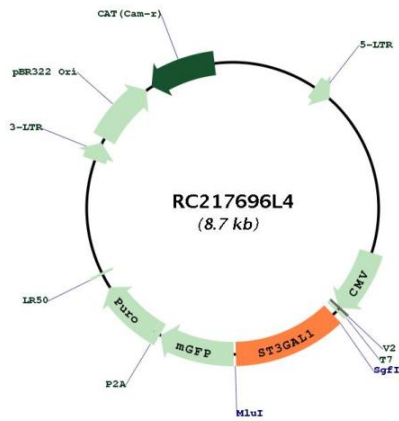
ACCN:	NM_003033
ORF Size:	1020 bp



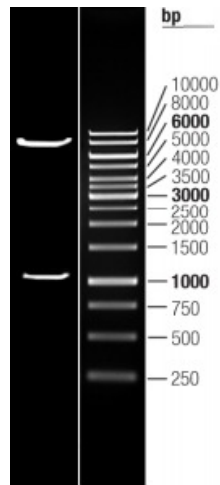
[View online »](#)

OTI Disclaimer:	The molecular sequence of this clone aligns with the gene accession number as a point of reference only. However, individual transcript sequences of the same gene can differ through naturally occurring variations (e.g. polymorphisms), each with its own valid existence. This clone is substantially in agreement with the reference, but a complete review of all prevailing variants is recommended prior to use. More info
OTI Annotation:	This clone was engineered to express the complete ORF with an expression tag. Expression varies depending on the nature of the gene.
Components:	The ORF clone is ion-exchange column purified and shipped in a 2D barcoded Matrix tube containing 10ug of transfection-ready, dried plasmid DNA (reconstitute with 100 ul of water).
Reconstitution Method:	<ol style="list-style-type: none">1. Centrifuge at 5,000xg for 5min.2. Carefully open the tube and add 100ul of sterile water to dissolve the DNA.3. Close the tube and incubate for 10 minutes at room temperature.4. Briefly vortex the tube and then do a quick spin (less than 5000xg) to concentrate the liquid at the bottom.5. Store the suspended plasmid at -20°C. The DNA is stable for at least one year from date of shipping when stored at -20°C.
RefSeq:	NM_003033.2
RefSeq Size:	6971 bp
RefSeq ORF:	1023 bp
Locus ID:	6482
UniProt ID:	Q11201
Cytogenetics:	8q24.22
Domains:	Glyco_transf_29
Protein Families:	Secreted Protein, Transmembrane
Protein Pathways:	Glycosphingolipid biosynthesis - ganglio series, Glycosphingolipid biosynthesis - globo series, Keratan sulfate biosynthesis, Metabolic pathways, O-Glycan biosynthesis
MW:	39.1 kDa
Gene Summary:	The protein encoded by this gene is a type II membrane protein that catalyzes the transfer of sialic acid from CMP-sialic acid to galactose-containing substrates. The encoded protein is normally found in the Golgi but can be proteolytically processed to a soluble form. Correct glycosylation of the encoded protein may be critical to its sialyltransferase activity. This protein, which is a member of glycosyltransferase family 29, can use the same acceptor substrates as does sialyltransferase 4B. Two transcript variants encoding the same protein have been found for this gene. Other transcript variants may exist, but have not been fully characterized yet. [provided by RefSeq, Jul 2008]

Product images:



Circular map for RC217696L4



Double digestion of RC217696L4 using SgfI and MluI