

Product datasheet for RC217696

SIAT4A (ST3GAL1) (NM_003033) Human Tagged ORF Clone

Product data:

| | |
|---------------------------|---|
| Product Type: | Expression Plasmids |
| Product Name: | SIAT4A (ST3GAL1) (NM_003033) Human Tagged ORF Clone |
| Tag: | Myc-DDK |
| Symbol: | SIAT4A |
| Synonyms: | 1; Gal-NAc6S; SIAT4A; SIATFL; ST3GalA; ST3GalA.1; ST3GalIA; ST3O |
| Mammalian Cell Selection: | Neomycin |
| Vector: | pCMV6-Entry (PS100001) |
| E. coli Selection: | Kanamycin (25 ug/mL) |
| ORF Nucleotide Sequence: | >RC217696 ORF sequence Red=Cloning site Blue=ORF Green=Tags(s) |

TTTTGTAATACGACTCACTATAGGGCGGCCGGAATTCGTCGACTGGATCCGGTACCGAGGAGATCTGCC
GCC**CGATCGCC**

ATGGTGACCTGCGGAAGAGGACCCTGAAAGTGCTCACCTTCCTCGTGCTTTCATCTTCTCACCTCT
TCTTCTGAACTACTCCACACCATGGTGGCCACCACCTGGTTCCCAAGCAGATGGTCTGGAGCTCTC
CGAGAACCTGAAGAGACTGATCAAGCACAGGCCTTGCACCTGCACCCACTGCATCGGGCAGCGCAAGCTC
TCGGCCTGGTTCGATGAGAGGTTCAACCAGACCATGCAGCCGCTGCTGACTGCCAGAACCGCTCTTGG
AGGACGACACCTACCGATGGTGGCTGAGGCTCCAGCGGGAAGAAGCCCAATAACTTGAATGACACCAT
CAAGGAGCTGTTCAAGTGGTGCCTGGGAATGTGGACCCATATGCTGGAGAAGAGGTGGTGGGCTGCCGG
CGCTGCGCCGTTGTGGCAACTCGGGCAACCTGAGGGAGTCTTCTTATGGCCTGAGATAGACAGTCACG
ACTTTGTCTCAGGATGAACAAGGCGCCACCGGAGGGTTTGAAGCTGATGTTGGACCAAGACCACCCA
CCATCTGGTGTACCCTGAGAGCTTCCGGGAGCTGGGAGATAATGTGAGCATGATCCTGGTGCCTTCAAG
ACCATCGACTTGGAGTGGGTGGTGGAGCGCCATCACCACGGGCACCATTTCCACACCTACATCCCGGTT
CTGCAAAGATCAGAGTGAACAGGATAAGATCCTGATCTACCACCCAGCCTTCAAGTATGTCTTTGA
CAACTGGCTGCAAGGGCACGGGCGATACCATCTACCGGCATCCTCTCGGTATCTTCTCAATGCATGTC
TGCGATGAGGTGGACTTGTACGGCTTCCGGGCAGACAGCAAAGGGAACCTGGCACCCTACTGGGAGAACA
ACCCATCCGCGGGGCTTTTCGCAAGACGGGGTGCACGATGCAGACTTTGAGTCAACGTGACGGCCAC
CTTGGCCTCCATCAATAAAATCCGGATCTTCAAGGGGAGA

ACGCGTACGCGGCCGCTCGAGCAGAAACTCATCTCAGAAGAGGATCTGGCAGCAATGATATCCTGGATT
ACAAGGATGACGACGATAAGGTTTAA



[View online »](#)

Protein Sequence: >RC217696 protein sequence
Red=Cloning site Green=Tags(s)

MVTLRKRTLKVL TFLVLFIFLTSFFLNYSHTMVATTWFPKQMVLELSENLRLIKHRPCTCTHCIGQRKL
 SAWFDERFNQTMQPLLTAQNALLEDDTYRWLRLQREKKPNNLNDTIKELFRVVPGNVDPMLEKRSVGCRC
 RCAVVGNSGNLRESSYGEIDSHDFVLRMKNKAPTAGFEADVGTKTTHHLVYPESFRELGDNVSMILVPFK
 TIDLEWVVS AIT TGT I SHTY I P V P A K I R V K Q D K I L I Y H P A F I K Y V F D N W L Q G H G R Y P S T G I L S V I F S M H V
 CDEVDLYGFGADSKGNWHHYWENNPSAGAFRKTGVHDADFE SNVTATLASINKIRIFKGR

TRTRPLEQKLISEEDLANDILDYKDDDDKV

Chromatograms: https://cdn.origene.com/chromatograms/mk6324_h11.zip

Restriction Sites: SgfI-MluI

Cloning Scheme:

Cloning sites used for ORF Shuttling:



* The last codon before the Stop codon of the ORF

ACCN: NM_003033

ORF Size: 1020 bp

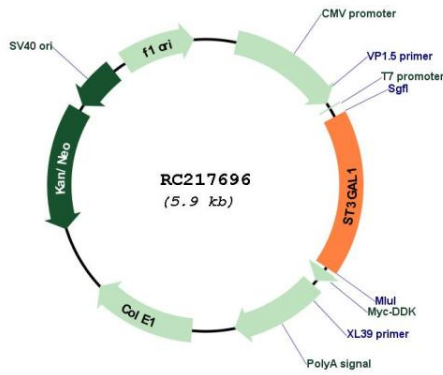
OTI Disclaimer: The molecular sequence of this clone aligns with the gene accession number as a point of reference only. However, individual transcript sequences of the same gene can differ through naturally occurring variations (e.g. polymorphisms), each with its own valid existence. This clone is substantially in agreement with the reference, but a complete review of all prevailing variants is recommended prior to use. [More info](#)

OTI Annotation: This clone was engineered to express the complete ORF with an expression tag. Expression varies depending on the nature of the gene.

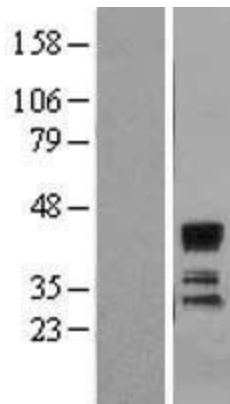
Components: The ORF clone is ion-exchange column purified and shipped in a 2D barcoded Matrix tube containing 10ug of transfection-ready, dried plasmid DNA (reconstitute with 100 ul of water).

| | |
|-------------------------------|--|
| Reconstitution Method: | <ol style="list-style-type: none">1. Centrifuge at 5,000xg for 5min.2. Carefully open the tube and add 100ul of sterile water to dissolve the DNA.3. Close the tube and incubate for 10 minutes at room temperature.4. Briefly vortex the tube and then do a quick spin (less than 5000xg) to concentrate the liquid at the bottom.5. Store the suspended plasmid at -20°C. The DNA is stable for at least one year from date of shipping when stored at -20°C. |
| Note: | Plasmids are not sterile. For experiments where strict sterility is required, filtration with 0.22um filter is required. |
| RefSeq: | NM_003033.4 |
| RefSeq Size: | 6971 bp |
| RefSeq ORF: | 1023 bp |
| Locus ID: | 6482 |
| UniProt ID: | Q11201 |
| Cytogenetics: | 8q24.22 |
| Domains: | Glyco_transf_29 |
| Protein Families: | Secreted Protein, Transmembrane |
| Protein Pathways: | Glycosphingolipid biosynthesis - ganglio series, Glycosphingolipid biosynthesis - globo series, Keratan sulfate biosynthesis, Metabolic pathways, O-Glycan biosynthesis |
| MW: | 39.1 kDa |
| Gene Summary: | The protein encoded by this gene is a type II membrane protein that catalyzes the transfer of sialic acid from CMP-sialic acid to galactose-containing substrates. The encoded protein is normally found in the Golgi but can be proteolytically processed to a soluble form. Correct glycosylation of the encoded protein may be critical to its sialyltransferase activity. This protein, which is a member of glycosyltransferase family 29, can use the same acceptor substrates as does sialyltransferase 4B. Two transcript variants encoding the same protein have been found for this gene. Other transcript variants may exist, but have not been fully characterized yet. [provided by RefSeq, Jul 2008] |

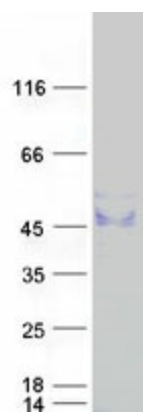
Product images:



Circular map for RC217696



Western blot validation of overexpression lysate (Cat# [LY418931]) using anti-DDK antibody (Cat# [TA50011-100]). Left: Cell lysates from untransfected HEK293T cells; Right: Cell lysates from HEK293T cells transfected with RC217696 using transfection reagent MegaTran 2.0 (Cat# [TT210002]).



Coomassie blue staining of purified ST3GAL1 protein (Cat# [TP317696]). The protein was produced from HEK293T cells transfected with ST3GAL1 cDNA clone (Cat# RC217696) using MegaTran 2.0 (Cat# [TT210002]).