

Product datasheet for **RC217692**

AFF4 (NM_014423) Human Tagged ORF Clone

Product data:

Product Type: Expression Plasmids
Product Name: AFF4 (NM_014423) Human Tagged ORF Clone
Tag: Myc-DDK
Symbol: AFF4
Synonyms: AF5Q31; CHOPS; MCEF
Mammalian Cell Selection: Neomycin
Vector: pCMV6-Entry (PS100001)
E. coli Selection: Kanamycin (25 ug/mL)
ORF Nucleotide Sequence: >RC217692 representing NM_014423
Red=Cloning site Blue=ORF Green=Tags(s)

TTTTGTAATACGACTCACTATAGGGCGGCCGGAATTCGTCGACTGGATCCGGTACCGAGGAGATCTGCC
GCC**CGATCGCC**

ATGAACCGTGAAGACCGGAATGTGCTGCGTATGAAAGAACGGAAAGCGGAATCAGGAAATTCAGCAGG
GCGAAGACGCCTCCCACCTAGCTCTCTCTTTGCAGAGCCATACAAAGTTACTAGCAAAGAAGATAA
GTTATCAAGTCGTATTCAGAGTATGCTTGGAACTACGATGAAATGAAGGATTTTCATAGGAGACAGATCT
ATACCAAAGCTTGTGCAATCCCAAGCCTACAGTACCACCATCAGCAGATGAAAAATCTAACCCAAAT
TCTTTGAACAGAGACATGGAGGCTCTCATCAGAGTAGCAAATGGACTCCAGTAGGACCCGCACCCAGCAC
TTCTCAGTCTCAGAAACGGTCTCAGGCTTACAGAGTGGACATAGTAGCCAGCGGACCAGCGCAGGTAGC
AGTAGTGGCACTAACAGTAGTGGTCAGAGGCACGACCGTGAGTCAATAACAATAGTGGGAGCAGTAGCC
GGAAAAAGGCCAGCATGGATCAGAACACTCCAAATCACGTTCTTCCAGCCCTGGAAAAACCCAGGCTGT
TTCTTCATTAACCTTAGTCATTCCAGGCTCATGGGAATGATCACCATAGCAAGGAACATCAACGCTCC
AAATCACCTCGGGACCCTGATGCAAACCTGGGATTCCTTCCCGTGTACCTTTTTCAAGTGGGCAGCACT
CAACTCAATCTTTCCACCCTCATTGATGTCAAAGTCAAATCAATGTTACAGAAACCCACTGCCTATGT
GCGGCCCATGGACGGACAGGAGTCCATGGAACCAAAGCTGTCTCTGAGCACTACAGCAGCCAATCCCAT
GGCAACAGCATGACTGAGCTGAAGCCAGCAGCAAAGCACATCTACCAAGCTGAAAAATACCTTCCCAAC
CACTGGATGCATCAGCTTCTGGTGTGTGAGCTGTGTGGATGAAATCCTAAAAGAGATGACGCATTCATG
GCCTCCCCCTCTAACGGCTATTCTACACCATGCAAAACAGAACCTTCCAAATTTCTTTTCCAACCTAAG
GAGTCTCAGCAGTCCAATTTTGGCACTGGAGAACAAAAAGATATAATCCTTCTAAAACCTCAAATGGGC
ACCAGTCTAAATCTATGTTAAAAGATGACTTAAAACCTAAGCAGCAGTGAAGACAGTGTGGGAACAGGA
TTGTGATAAGACAATGCCGAGGAGTACACCAGGAAGTAACTCTGAACCTTACACCATAATAGTGAAGGA
GCAGATAACTCCAGGGATGATTCTAGTAGCCACAGTGGATCTGAAAGCAGCTCTGGATCTGACTCAGAGA
GTGAAAGTAGTTCAGTGACAGTGAAGCAAATGAGCCATCCAGAGTGCATCTCCCGAGCCTGAACCC
GCCAACAAACAAATGGCAACTTGATAATTGGCTGAATAAAGTGAACCCACATAAAGTGTCACCCGCCTCT



[View online >](#)

TCAGTGGACAGTAACATCCCATCATCTCAAGGCTACAAAAAGGAAGGCCGAGAGCAGGGCACTGGGAATA
GCTACACTGATACAAGTGGACCTAAAGAAACGAGTTCCGCTACTCCGGGACGAGACTCCAAAACCATCCA
AAAGGGATCAGAAAGTGGGCGTGGGAGGCAGAAATCTCCTGCACAGAGTGACAGCACAACACAGAGAAGA
ACTGTAGGCAAAAAACAACCCAAAAAGGCTGAGAAGGCAGCTGCTGAAGAGCCTCGTGGAGGCTGAAGA
TAGAAAGTGAACCCCTGTAGACTTGGCTAGCAGCATGCCCTCCAGCAGACACAAAGCAGCCACCAAAGG
CTCAAGGAAACCCAATATAAAGAAGGAGTCTAAGTCTTCCCCTCGACCTACAGCAGAGAAAAAGAAATAT
AAGTCAACAAGTAAATCTTCCCAGAAATCAAGGGAAATCATAGAAACAGATACCTCATCCTCAGATTCAG
ATGAAAGTGAGAGCCTTCTCCTTCCACAAACTCCTAAGTACCCCGAGAGCAATAGGACTCCTGTTAA
ACCCTCCTCAGTGGAGGAAGAAGATAGCTTTTTTCGGCAACGAATGTTCTCTCCTATGGAAGAGAAGGAA
CTTCTTTACCCCTCAGTGAACCTGATGACAGGTACCCACTTATTGTGAAGATTGACCTGAATCTTTTGA
CTAGAATACCAGGAAAGCCTTACAAAGAAACAGAGCCGCCCAAGGGGAAAAAGAAAAATGTCCAGAAAA
GCACACGAGAGAGGCTCAGAAACAAGCCTCAGAAAAAGTTTCAACAAAGGCAAGAGGAAGCATAAGAAT
GAAGATGATAACCGAGCCAGTGAGAGCAAGAAACCCAAAACGGAGGACAAGAATTCAGCAGGCCATAAGC
CATCCAGCAACAGAGAGTCACTAAGCAGAGTGTGCAAAAAGAAAAGGATTTGTTGCCTTCTCCCGCTGG
GCCTGTTCTTCAAAGATCCAAAACAGAGCATGGCTCTCGGAAGAGGACTATTAGTCAGTCTTCTTCC
TTAAAGTCAAGCAGTAACAGCAACAAGGAGACGAGTGGCAGCAGCAAAAACAGTTCTCCACATCAAAGC
AGAAGAAGACCGAAGGGAAGACTTCCAGTAGCTCCAAGGAGGTTAAGGAAAAGGCTCCAAGTAGCTCCTC
TAACTGTCCTCCATCTGCACCAACTCTTGATTCTTCTAAGCCTCGGAGAACAAAGCTTGTCTTTGATGAC
AGAAATTATTCAGCAGACCATTATTTACAAGAAGCAAAAAGCTAAAGCACAAATGCAGATGCATTGTCTG
ATAGGTTTGAGAAAGCTGTATACTATCTTGATGCTGTGGTATCTTTCATTGAATGTGGGAATGCATTAGA
GAAGAAATGCTCAGGAATCCAAATCCCCATTCCCTATGTATTAGAGACGGTGGATCTCATCAAATACACT
ATGAAGCTAAAGAATTACTTGGCACCAGATGCTACAGCTGCAGATAAACGACTCACAGTACTTTGCCTGC
GATGCGAGTCTTTGCTGTACCTGAGGCTGTTCAAACCTGAAGAAGGAAAAATGCTCTGAAGTACTCAAAGC
ACTGACAGAGCACCTGAAGAATCTTATAATAATTCTCAAGCACCATCGCCTGGCTTGGGAAGCAAAGCT
GTGGGATGCCTTCCCCTGTTTCTCAAAGCTGTCAACAGGCAATTCAGGAAATTATTCATCTGGGGCCA
GTAGTGTCTTGAAGTGGTTCTTCAAGTACCATTCCACAGAAGATCCACCAGATGGCAGCCAGCTATGT
TCAGGTACATCCAACCTCCTCTATGCCACCGAAATTTGGGACCAAGCTGAACAGCTTCCAAAAGAGCAA
AAAGAATCTTTGCTGAACTGGATAAAGTAATGGGCCCTCTCATCTTTAATGCAAGCATCATGACAGATC
TAGTTCGTTATACCCGGCAGGACTGCACTGGCTTCGCCAGGATGCCAAGTTGATATCT

ACGCGTACGCGGCCGCTCGAGCAGAACTCATCTCAGAAGAGGATCTGGCAGCAAATGATATCCTGGATT
ACAAGGATGACGACGATAAGGTTTAA

Protein Sequence: >RC217692 representing NM_014423
 Red=Cloning site Green=Tags(s)

MNREDRNVLRMKERERRNQEIQQGEDAFPPSSPLFAEPYKVTSKEDKLSSRIQSMLGNYDEMKDFIGDRS
 IPKLVAIPKPTVPPSADEKSNPNFFEQRHGGSHQSSKWTPVGPAPSTSQSQRSSGLQSGHSSQRTSAGS
 SSGTNSGQRHDRESYNNSSGSSSRKKGQHGSEHSKSRSSSPGKQAVSSLNSSHSRSHGNDHHSKEHQRS
 KSPRPDPDANWDSRVPFSSGQHSTQSFPPSLMSKSNMLQKPTAYVRPMDGQESMEPKLSEHYSSQSH
 GNSMTELPSSKAHLTKLKIPSQPLDASASGDVSCVDEILKEMTHSWPPPLTAIHPTCKTEPSKFPFPTK
 ESQQSNFGTGEQKRYNPSTKSNGHQSKSMLKDDLKLSSESDSDGEQDCDKTMRSTPGSNSEPSHHNSEG
 ADNSRDDSSSHSGSESSSGSDSESESSSDSEANEPSQSASPEPEPPPTNKWQLDNWLNKVNPHKVPSPAS
 SVDSNIPSSQGYKKEGREQGTGNSYTDTSQPKETSSATPGRDSKTIQKGSSEGRGRQKSPAQSDSTTQRR
 TVGKKQPKKAAEKAAAEPRGGLKIESETPVDLASSMPSSRHKAATKGRKPNIKKESKSSPRPTAEKKKY
 KSTSKSSQKSREIIETDTSSSDSDESESLPPSSQTPKYEPENRTPVKPSSVEEDSFFRQRMFSPMEEKE
 LLSPLSEPDDRYPLIVKIDLNLLTRIPGKPYKTEPPKGEKKNVPEKHTREAQKQASEKVSNGKGRKHKN
 EDDNRASESKPKTEDKNSAGHKPSSNRESSKQSAAKEKDLLPSPAGVPSKDPKTEHGSRKRTISQSSS
 LKSSSNSNKETSGSSKNSSTSKQKTEGKTSSSSKEVKEKAPSSSSNCPSPAPTLDSSKPRRTKLVFDD
 RNYSADHYLQEAKKLKHNADALDRFEKAVYYLDAVVSFIECGNALEKNAQESKSPFPMYSETVDLIKYT
 MKLKNYLAPDATAADKRLTVLCLRCESLLYLRLFKLKENALKYSKTLTEHLKNSYNNQAPSPGLGSKA
 VGMPSPVSPKLSPGNSGNYSSGASSASAGSSVTIPQKIHQMAASYVQVTSNFLYATEIWDQAEQLSKEQ
 KEFFAELDKVMGPLIFNASIMTDLVRYTRQGLHWLRQDAKLIS

TRTRPLEQKLISEEDLAANDILDYKDDDDKV

Chromatograms: https://cdn.origene.com/chromatograms/mk6048_e06.zip

Restriction Sites: SgfI-MluI

Cloning Scheme:

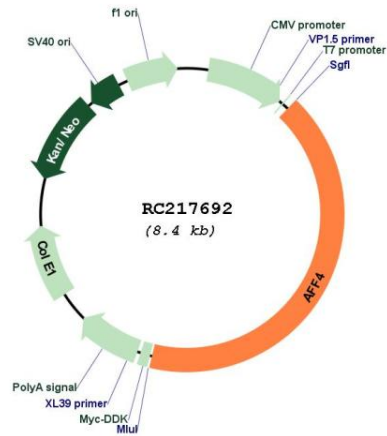


ACCN: NM_014423

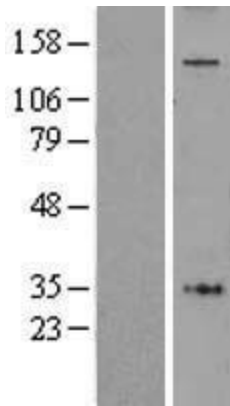
ORF Size: 3489 bp

OTI Disclaimer:	The molecular sequence of this clone aligns with the gene accession number as a point of reference only. However, individual transcript sequences of the same gene can differ through naturally occurring variations (e.g. polymorphisms), each with its own valid existence. This clone is substantially in agreement with the reference, but a complete review of all prevailing variants is recommended prior to use. More info
OTI Annotation:	This clone was engineered to express the complete ORF with an expression tag. Expression varies depending on the nature of the gene.
Components:	The ORF clone is ion-exchange column purified and shipped in a 2D barcoded Matrix tube containing 10ug of transfection-ready, dried plasmid DNA (reconstitute with 100 ul of water).
Reconstitution Method:	<ol style="list-style-type: none">1. Centrifuge at 5,000xg for 5min.2. Carefully open the tube and add 100ul of sterile water to dissolve the DNA.3. Close the tube and incubate for 10 minutes at room temperature.4. Briefly vortex the tube and then do a quick spin (less than 5000xg) to concentrate the liquid at the bottom.5. Store the suspended plasmid at -20°C. The DNA is stable for at least one year from date of shipping when stored at -20°C.
Note:	Plasmids are not sterile. For experiments where strict sterility is required, filtration with 0.22um filter is required.
RefSeq:	NM_014423.4
RefSeq Size:	9528 bp
RefSeq ORF:	3492 bp
Locus ID:	27125
UniProt ID:	Q9UHB7
Cytogenetics:	5q31.1
Domains:	AF-4
Protein Families:	Transcription Factors
MW:	127.3 kDa
Gene Summary:	The protein encoded by this gene belongs to the AF4 family of transcription factors involved in leukemia. It is a component of the positive transcription elongation factor b (P-TEFb) complex. A chromosomal translocation involving this gene and MLL gene on chromosome 11 is found in infant acute lymphoblastic leukemia with ins(5;11)(q31;q31q23). [provided by RefSeq, Oct 2011]

Product images:



Circular map for RC217692



Western blot validation of overexpression lysate (Cat# [LY402333]) using anti-DDK antibody (Cat# [TA50011-100]). Left: Cell lysates from untransfected HEK293T cells; Right: Cell lysates from HEK293T cells transfected with RC217692 using transfection reagent MegaTran 2.0 (Cat# [TT210002]).