

## Product datasheet for RC217688L3

### SMPDL3B (NM\_014474) Human Tagged Lenti ORF Clone

#### Product data:

Product Type:	Expression Plasmids
Product Name:	SMPDL3B (NM_014474) Human Tagged Lenti ORF Clone
Tag:	Myc-DDK
Symbol:	SMPDL3B
Synonyms:	ASML3B
Mammalian Cell Selection:	Puromycin
Vector:	pLenti-C-Myc-DDK-P2A-Puro (PS100092)
E. coli Selection:	Chloramphenicol (34 ug/mL)
ORF Nucleotide Sequence:	The ORF insert of this clone is exactly the same as(RC217688).
Restriction Sites:	SgfI-MluI
Cloning Scheme:	

Cloning sites used for ORF Shuttling:



\* The last codon before the Stop codon of the ORF.

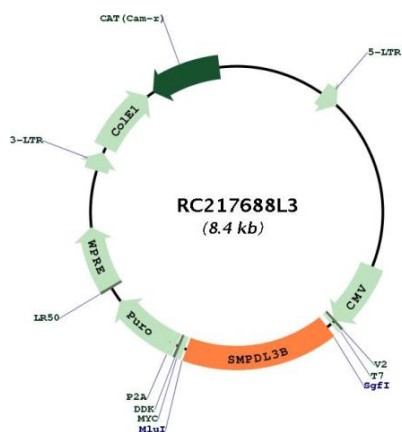
ACCN:	NM_014474
ORF Size:	1365 bp



[View online »](#)

<b>OTI Disclaimer:</b>	The molecular sequence of this clone aligns with the gene accession number as a point of reference only. However, individual transcript sequences of the same gene can differ through naturally occurring variations (e.g. polymorphisms), each with its own valid existence. This clone is substantially in agreement with the reference, but a complete review of all prevailing variants is recommended prior to use. <a href="#">More info</a>
<b>OTI Annotation:</b>	This clone was engineered to express the complete ORF with an expression tag. Expression varies depending on the nature of the gene.
<b>Components:</b>	The ORF clone is ion-exchange column purified and shipped in a 2D barcoded Matrix tube containing 10ug of transfection-ready, dried plasmid DNA (reconstitute with 100 ul of water).
<b>Reconstitution Method:</b>	<ol style="list-style-type: none"><li>1. Centrifuge at 5,000xg for 5min.</li><li>2. Carefully open the tube and add 100ul of sterile water to dissolve the DNA.</li><li>3. Close the tube and incubate for 10 minutes at room temperature.</li><li>4. Briefly vortex the tube and then do a quick spin (less than 5000xg) to concentrate the liquid at the bottom.</li><li>5. Store the suspended plasmid at -20°C. The DNA is stable for at least one year from date of shipping when stored at -20°C.</li></ol>
<b>RefSeq:</b>	<a href="#">NM_014474.2</a>
<b>RefSeq Size:</b>	1890 bp
<b>RefSeq ORF:</b>	1368 bp
<b>Locus ID:</b>	27293
<b>UniProt ID:</b>	<a href="#">Q92485</a>
<b>Cytogenetics:</b>	1p35.3
<b>Domains:</b>	Metallophos
<b>Protein Families:</b>	Secreted Protein
<b>MW:</b>	50.6 kDa
<b>Gene Summary:</b>	Lipid-modulating phosphodiesterase (PubMed:26095358). Active on the surface of macrophages and dendritic cells and strongly influences macrophage lipid composition and membrane fluidity. Acts as a negative regulator of Toll-like receptor signaling (By similarity). Has in vitro phosphodiesterase activity, but the physiological substrate is unknown (PubMed:26095358). Lacks activity with phosphocholine-containing lipids, but can cleave CDP-choline, and can release phosphate from ATP and ADP (in vitro) (By similarity). [UniProtKB/Swiss-Prot Function]

Product images:



Circular map for RC217688L3