

Product datasheet for **RC217688**

SMPDL3B (NM_014474) Human Tagged ORF Clone

Product data:

Product Type:	Expression Plasmids
Product Name:	SMPDL3B (NM_014474) Human Tagged ORF Clone
Tag:	Myc-DDK
Symbol:	SMPDL3B
Synonyms:	ASML3B
Mammalian Cell Selection:	Neomycin
Vector:	pCMV6-Entry (PS100001)
E. coli Selection:	Kanamycin (25 ug/mL)



[View online »](#)

ORF Nucleotide Sequence:

>RC217688 representing NM_014474
 Red=Cloning site Blue=ORF Green=Tags(s)

TTTTGTAATACGACTCACTATAGGGCGGCCGGAATTCGTCGACTGGATCCGGTACCGAGGAGATCTGCC
 GCC**CGCATCGCC**

ATGAGGCTGCTCGCTGGCTGATTTTCCTGGCTAACTGGGGAGGTGCCAGGGCTGAACCAGGGAAGTTCT
 GGCACATCGCTGACCTGCACCTTGACCCTGACTACAAGGTATCCAAAGACCCCTCCAGGTGTGCCATC
 AGCTGGATCCCAGCCAGTGCCCGACGCAGGCCCTGGGGTACTACCTCTGTGATTCTCCCTGGGCCCTC
 ATCAACTCCTCCATCTATGCCATGAAGGAGATTGAGCCAGAGCCAGACTTCATTCTCTGGACTGGTGATG
 ACACGCCTCATGTGCCGATGAGAACTGGGAGAGGCAGCTGACTGAAATTTGGAACGCCTGACCAA
 GCTCATCAGAGAGGTCTTCCAGATACTAAAGTCTATGCTGCTTTGGAAATCATGATTTTACCCCAAA
 AACCGATTCCAGCTGGAAGTAAACAATCTACAATCAGATAGCAGAATATGAAACCCTGGCTTAGTA
 ATGAGTCCATCGCTCTTTCAAAAAGGTGCCTTCTACTGTGAGAAGCTGCCGGTCCCAGCGGGCTGG
 GCGAATTGTGGTCTCAACACCAATCTGTACTATACCAGCAATGCGCTGACAGCAGACATGGCGGCCCT
 GGCAGCAGTTCAGTGGCTGGAAGATGTGCTGACCGATGCATCCAAAGCTGGGGACATGGTGTACATTG
 TCGGCCACGTGCCCGGGTCTTTGAGAAGACGCAAAACAAGGCATGGTTCGGGAGGGCTTCAATGA
 AAAATACCTGAAGGTGGTCCGGAAGCATCATCGCGTATAGCAGGGCAGTTCTTCGGGCACCACCACACC
 GACAGCTTTCCGATGCTCTATGATGATGACGGTGTCCCATAAAGCGCCATGTTTATCACACCTGGAGTCA
 CCCCATGGAAAACCACATTACCTGGAGTGGTCAATGGGGCCAACAATCCAGCCATCCGGGTGTTGGAATA
 TGACCGAGCCACACTGAGCCTGAAGGACATGGTGAACCTACTTTCATGAACCTGAGCCAGGCGAATGCTCAG
 GGGACGCCGCGCTGGGAGCTCGAGTACCAGCTGACCGAGGCCATGGGGTGGCCGACGCCAGCGCCCACT
 CCATGCACACAGTGTGGACCGCATCGCTGGCGACCCAGAGCAGACTGCAGCGCTACTACGTCTATAACTC
 AGTCAGTACTCTGCTGGGGTCTGCGACGAGGCCCTGCAGCATGCAGCACGTGTGTGCCATGCGCCAGGTG
 GACATTGACGCTTACACCACCTGTCTGTATGCCTCTGGCACACGCCCGTGGCCAGCTCCCGCTGCTGC
 TGATGGCCCTGCTGGCCTGTGCACGCTCGTGCTG

ACGCGTACGCGGCCGCTCGAGCAGAACTCATCTCAGAAGAGGATCTGGCAGCAAATGATATCCTGGATT
 ACAAGGATGACGACGATAAGGTTTAA

Protein Sequence:

>RC217688 representing NM_014474
 Red=Cloning site Green=Tags(s)

MRLLAWLIFLANWGGARAEPGKFWHIADLHLDPDYKVS KDPFQVCP SAGSQPVPDAGPWGDYLCDSPWAL
 INSSIYAMKEIEPEPDFILWTGDDTPHPDEKLGAAVLEIVERLTKLIREVFPDTKVYAALGNHDFHPK
 NQFPAGSNNIYNQIAELWKPWLSNESIALFKKGAFYCEKLPGPSGAGRIVVLNTNLYYTSNALTADMADP
 GQQFQWLEDVLT DASKAGDMVYIVGHVPPGF FEKTQNKAWFREGFNEKYLVVRKHHRVIA GQFFGHHHT
 DSFRMLYDDAGVPI SAMFITPGVTPWK TLPGVVNGANNPAIRVFEYDRATLSL KDMVTYFMNLSQANAQ
 GTPRWELEYQLTEAYGVPDASAHSMHTVLDRIAGDQSTLQRYVYVNSVSY SAGVCDEACSMQHVCAMRQV
 DIDAYTTCLYASGTTVPVQLPLLLMALLGLCTLVL

TRTRPLEQKLISEEDLAANDILDYKDDDDKV

Chromatograms:

https://cdn.origene.com/chromatograms/mk6484_a06.zip

Restriction Sites:

Sgfl-Mlul

Cloning Scheme:


ACCN: NM_014474

ORF Size: 1365 bp

OTI Disclaimer: The molecular sequence of this clone aligns with the gene accession number as a point of reference only. However, individual transcript sequences of the same gene can differ through naturally occurring variations (e.g. polymorphisms), each with its own valid existence. This clone is substantially in agreement with the reference, but a complete review of all prevailing variants is recommended prior to use. [More info](#)

OTI Annotation: This clone was engineered to express the complete ORF with an expression tag. Expression varies depending on the nature of the gene.

Components: The ORF clone is ion-exchange column purified and shipped in a 2D barcoded Matrix tube containing 10ug of transfection-ready, dried plasmid DNA (reconstitute with 100 ul of water).

Reconstitution Method:

1. Centrifuge at 5,000xg for 5min.
2. Carefully open the tube and add 100ul of sterile water to dissolve the DNA.
3. Close the tube and incubate for 10 minutes at room temperature.
4. Briefly vortex the tube and then do a quick spin (less than 5000xg) to concentrate the liquid at the bottom.
5. Store the suspended plasmid at -20°C. The DNA is stable for at least one year from date of shipping when stored at -20°C.

RefSeq: [NM_014474.4](#)

RefSeq Size: 1890 bp

RefSeq ORF: 1368 bp

Locus ID: 27293

UniProt ID: [Q92485](#)

Cytogenetics: 1p35.3

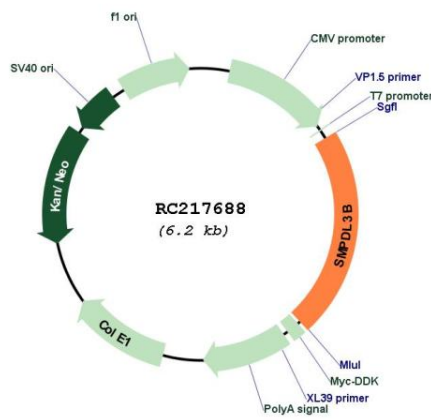
Domains: Metallophos

Protein Families: Secreted Protein

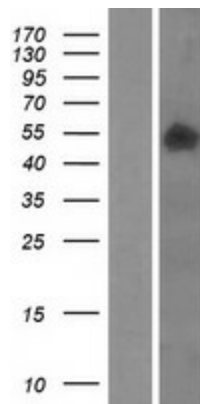
MW: 50.6 kDa

Gene Summary: Lipid-modulating phosphodiesterase (PubMed:26095358). Active on the surface of macrophages and dendritic cells and strongly influences macrophage lipid composition and membrane fluidity. Acts as a negative regulator of Toll-like receptor signaling (By similarity). Has in vitro phosphodiesterase activity, but the physiological substrate is unknown (PubMed:26095358). Lacks activity with phosphocholine-containing lipids, but can cleave CDP-choline, and can release phosphate from ATP and ADP (in vitro) (By similarity). [UniProtKB/Swiss-Prot Function]

Product images:



Circular map for RC217688



Western blot validation of overexpression lysate (Cat# [LY415256]) using anti-DDK antibody (Cat# [TA50011-100]). Left: Cell lysates from untransfected HEK293T cells; Right: Cell lysates from HEK293T cells transfected with RC217688 using transfection reagent MegaTran 2.0 (Cat# [TT210002]).