

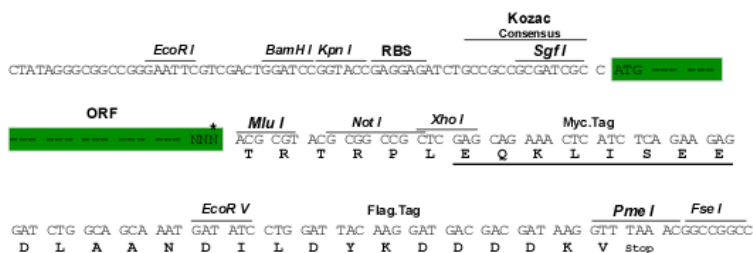
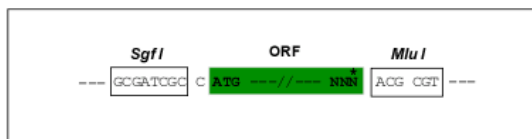
## Product datasheet for RC217687

### PNPLA7 (NM\_152286) Human Tagged ORF Clone

#### Product data:

Product Type:	Expression Plasmids
Tag:	Myc-DDK
Symbol:	PNPLA7
Synonyms:	C9orf111; NTE-R1; NTE1
Mammalian Cell Selection:	Neomycin
Vector:	pCMV6-Entry (PS100001)
E. coli Selection:	Kanamycin (25 ug/mL)
Restriction Sites:	SgfI-MluI
Cloning Scheme:	

Cloning sites used for ORF Shuttling:



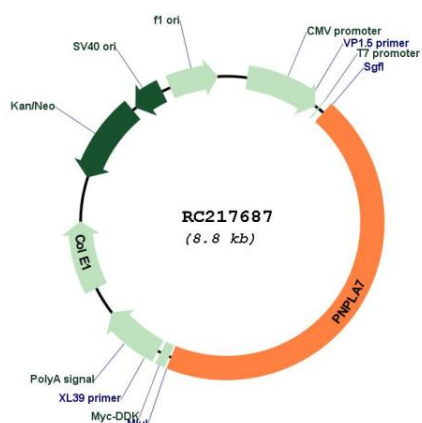
\* The last codon before the Stop codon of the ORF

ACCN:	NM_152286
ORF Size:	3951 bp



<b>OTI Disclaimer:</b>	The molecular sequence of this clone aligns with the gene accession number as a point of reference only. However, individual transcript sequences of the same gene can differ through naturally occurring variations (e.g. polymorphisms), each with its own valid existence. This clone is substantially in agreement with the reference, but a complete review of all prevailing variants is recommended prior to use. <a href="#">More info</a>
<b>OTI Annotation:</b>	This clone was engineered to express the complete ORF with an expression tag. Expression varies depending on the nature of the gene.
<b>Components:</b>	The ORF clone is ion-exchange column purified and shipped in a 2D barcoded Matrix tube containing 10ug of transfection-ready, dried plasmid DNA (reconstitute with 100 ul of water).
<b>Reconstitution Method:</b>	<ol style="list-style-type: none"> <li>1. Centrifuge at 5,000xg for 5min.</li> <li>2. Carefully open the tube and add 100ul of sterile water to dissolve the DNA.</li> <li>3. Close the tube and incubate for 10 minutes at room temperature.</li> <li>4. Briefly vortex the tube and then do a quick spin (less than 5000xg) to concentrate the liquid at the bottom.</li> <li>5. Store the suspended plasmid at -20°C. The DNA is stable for at least one year from date of shipping when stored at -20°C.</li> </ol>
<b>Note:</b>	Plasmids are not sterile. For experiments where strict sterility is required, filtration with 0.22um filter is required.
<b>RefSeq:</b>	<a href="#">NM_152286.3</a> , <a href="#">NP_689499.3</a>
<b>RefSeq Size:</b>	4731 bp
<b>RefSeq ORF:</b>	3954 bp
<b>Locus ID:</b>	375775
<b>UniProt ID:</b>	<a href="#">Q6ZV29</a>
<b>Cytogenetics:</b>	9q34.3
<b>Domains:</b>	cNMP, Patatin
<b>Protein Families:</b>	Transmembrane
<b>MW:</b>	145.6 kDa
<b>Gene Summary:</b>	Human patatin-like phospholipases, such as PNPLA7, have been implicated in regulation of adipocyte differentiation and have been induced by metabolic stimuli (Wilson et al., 2006 [PubMed 16799181]).[supplied by OMIM, Jun 2008]

## Product images:



Circular map for RC217687