

Product datasheet for RC217682

Opn1mw (OPN1MW2) (NM_001048181) Human Tagged ORF Clone

Product data:

Product Type:	Expression Plasmids
Product Name:	Opn1mw (OPN1MW2) (NM_001048181) Human Tagged ORF Clone
Tag:	Myc-DDK
Symbol:	Opn1mw
Synonyms:	GOP
Mammalian Cell Selection:	Neomycin
Vector:	pCMV6-Entry (PS100001)
E. coli Selection:	Kanamycin (25 ug/mL)
ORF Nucleotide Sequence:	>RC217682 representing NM_001048181 Red=Cloning site Blue=ORF Green=Tags(s)

TTTTGTAATACGACTCACTATAGGGCGGCCGGAATTCGTCGACTGGATCCGGTACCGAGGAGATCTGCC
GCC**CGATCGCC**

ATGGCCAGCAGTGGAGCCTCCAAAGGCTCGCAGGCCGCATCCGCAGGACAGCTATGAGGACAGCACCC
AGTCCAGCATCTTACCTACACCAACAGCAACTCCACCAGAGGCCCTTCGAAGGCCGAATTACCACAT
CGCTCCAGATGGGTGTACCACCTACCAGTGTCTGGATGATCTTTGGTTCATTGCATCCGTCTTACA
AATGGCTTGTGCTGGCGCCACCATGAAGTCAAGAAGCTGCGCCACCCGCTGAACTGGATCCTGGTGA
ACCTGGCGGTGCTGACCTGGCAGAGACCGTCATCGCCAGCACTATCAGCGTTGTGAACCAGGTCTATGG
CTACTTGGTGTGGGCCACCCTATGTGTGCTCGAGGGCTACACCGTCTCCCTGTGGGATCACAGGT
CTCTGGTCTCTGGCCATCATTTCTGGGAGAGATGGATGGTGGTCTGCAAGCCCTTTGGCAATGTGAGAT
TTGATGCCAAGCTGGCCATCGTGGGCATTGCCCTCTCCTGGATCTGGGCTGCTGTGTGGACGCCCGCC
CATCTTTGGTTGGAGCAGGACTGGCCACCGCCTGAAGACTTCATGCGGCCAGACGTGTTACAGCGGC
AGCTCGTACCCCGGGTGCAGTCTTACATGATTGTCTCATGGTACCTGCTGCATACCCCACTCAGCA
TCATCGTGTCTGCTACCTCCAAGTGTGGCTGGCCATCCGAGCGGTGGCAAAGCAGCAGAAAGAGTCTGA
ATCCACCAGAAGGCAGAGAAGGAAGTGACGCGCATGGTGGTGGTATGGTCTGGCATTCTGCTCTGCG
TGGGACCCTACGCCTTCTTGCATGCTTTGCTGCTGCCAACCCTGGCTACCCCTCCACCCTTTGATGG
CTGCCCTGCGGCCCTTTTGGCAAAGTGCCACTATCTACAACCCGTTATCTATGCTTTATGAACCG
GCAGTTTCGAAACTGCATCTTGACGCTTTTCGGGAAGAAGTTGACGATGGCTCTGAACTCTCCAGCGCC
TCCAAACGGAGGTCTCATCTGTGCTCCTCGGTATCGCCTGCA

ACGCGTACGCGGCCGCTCGAGCAGAAACTCATCTCAGAAGAGGATCTGGCAGCAATGATATCCTGGATT
ACAAGGATGACGACGATAAGGTTAA



[View online »](#)

Reconstitution Method:

1. Centrifuge at 5,000xg for 5min.
2. Carefully open the tube and add 100ul of sterile water to dissolve the DNA.
3. Close the tube and incubate for 10 minutes at room temperature.
4. Briefly vortex the tube and then do a quick spin (less than 5000xg) to concentrate the liquid at the bottom.
5. Store the suspended plasmid at -20°C. The DNA is stable for at least one year from date of shipping when stored at -20°C.

RefSeq: [NM_001048181.2](#), [NP_001041646.1](#)

RefSeq Size: 1223 bp

RefSeq ORF: 1095 bp

Locus ID: 728458

UniProt ID: [P0DN77](#)

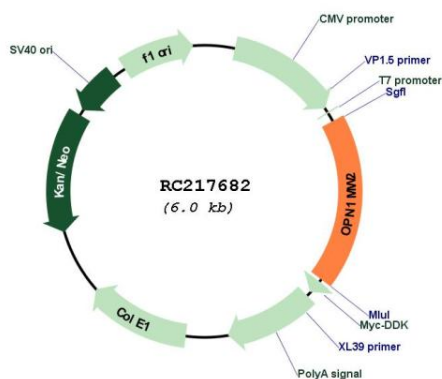
Cytogenetics: Xq28

Protein Families: Druggable Genome, Transmembrane

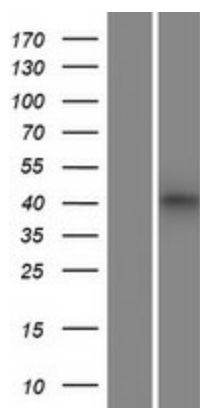
MW: 40.4 kDa

Gene Summary: This gene encodes for a light absorbing visual pigment of the opsin gene family. The encoded protein is called green cone photopigment or medium-wavelength sensitive opsin. Opsins are G-protein coupled receptors with seven transmembrane domains, an N-terminal extracellular domain, and a C-terminal cytoplasmic domain. The long-wavelength opsin gene and multiple copies of the medium-wavelength opsin gene are tandemly arrayed on the X chromosome and frequent unequal recombination and gene conversion may occur between these sequences. X chromosomes may have fusions of the medium- and long-wavelength opsin genes or may have more than one copy of these genes. Defects in this gene are the cause of deutanopic colorblindness. [provided by RefSeq, Mar 2009]

Product images:



Circular map for RC217682



Western blot validation of overexpression lysate (Cat# [LY420772]) using anti-DDK antibody (Cat# [TA50011-100]). Left: Cell lysates from untransfected HEK293T cells; Right: Cell lysates from HEK293T cells transfected with RC217682 using transfection reagent MegaTran 2.0 (Cat# [TT210002]).