

## Product datasheet for RC217676L1

### WTIP (NM\_001080436) Human Tagged Lenti ORF Clone

#### Product data:

**Product Type:** Expression Plasmids

**Tag:** Myc-DDK

**Symbol:** WTIP

**Mammalian Cell** None

**Selection:**

**Vector:** pLenti-C-Myc-DDK (PS100064)

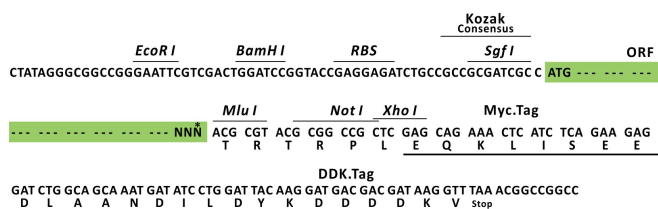
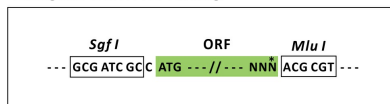
**E. coli Selection:** Chloramphenicol (34 ug/mL)

**ORF Nucleotide Sequence:** The ORF insert of this clone is exactly the same as(RC217676).

**Restriction Sites:** SgfI-MluI

**Cloning Scheme:**

Cloning sites used for ORF Shuttling:



\* The last codon before the Stop codon of the ORF.

**ACCN:** NM\_001080436

**ORF Size:** 1290 bp

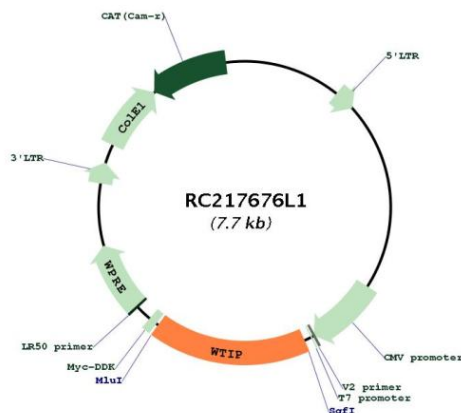


<b>OTI Disclaimer:</b>	The molecular sequence of this clone aligns with the gene accession number as a point of reference only. However, individual transcript sequences of the same gene can differ through naturally occurring variations (e.g. polymorphisms), each with its own valid existence. This clone is substantially in agreement with the reference, but a complete review of all prevailing variants is recommended prior to use. <a href="#">More info</a>
<b>OTI Annotation:</b>	This clone was engineered to express the complete ORF with an expression tag. Expression varies depending on the nature of the gene.
<b>Components:</b>	The ORF clone is ion-exchange column purified and shipped in a 2D barcoded Matrix tube containing 10ug of transfection-ready, dried plasmid DNA (reconstitute with 100 ul of water).
<b>Reconstitution Method:</b>	<ol style="list-style-type: none"> <li>1. Centrifuge at 5,000xg for 5min.</li> <li>2. Carefully open the tube and add 100ul of sterile water to dissolve the DNA.</li> <li>3. Close the tube and incubate for 10 minutes at room temperature.</li> <li>4. Briefly vortex the tube and then do a quick spin (less than 5000xg) to concentrate the liquid at the bottom.</li> <li>5. Store the suspended plasmid at -20°C. The DNA is stable for at least one year from date of shipping when stored at -20°C.</li> </ol>
<b>Note:</b>	Plasmids are not sterile. For experiments where strict sterility is required, filtration with 0.22um filter is required.
<b>RefSeq:</b>	<a href="#">NM_001080436.1</a>
<b>RefSeq Size:</b>	2204 bp
<b>RefSeq ORF:</b>	1293 bp
<b>Locus ID:</b>	126374
<b>UniProt ID:</b>	<a href="#">A6NIX2</a>
<b>Cytogenetics:</b>	19q13.11
<b>MW:</b>	44.9 kDa

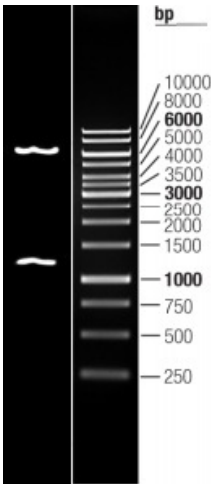
### Gene Summary:

Adapter or scaffold protein which participates in the assembly of numerous protein complexes and is involved in several cellular processes such as cell fate determination, cytoskeletal organization, repression of gene transcription, cell-cell adhesion, cell differentiation, proliferation and migration. Positively regulates microRNA (miRNA)-mediated gene silencing. Negatively regulates Hippo signaling pathway and antagonizes phosphorylation of YAP1. Acts as a transcriptional corepressor for SNAIL and SNAIL2/SLUG-dependent repression of E-cadherin transcription. Acts as a hypoxic regulator by bridging an association between the prolyl hydroxylases and VHL enabling efficient degradation of HIF1A. In podocytes, may play a role in the regulation of actin dynamics and/or foot process cytoarchitecture (By similarity). In the course of podocyte injury, shuttles into the nucleus and acts as a transcription regulator that represses WT1-dependent transcription regulation, thereby translating changes in slit diaphragm structure into altered gene expression and a less differentiated phenotype. Involved in the organization of the basal body (By similarity). Involved in cilia growth and positioning (By similarity).[UniProtKB/Swiss-Prot Function]

### Product images:



Circular map for RC217676L1



Double digestion of RC217676L1 using Sgfl and Mlul