

## Product datasheet for **RC217673**

### **RNPS1 (NM\_006711) Human Tagged ORF Clone**

#### Product data:

Product Type:	Expression Plasmids
Product Name:	RNPS1 (NM_006711) Human Tagged ORF Clone
Tag:	Myc-DDK
Symbol:	RNPS1
Synonyms:	E5.1
Mammalian Cell Selection:	Neomycin
Vector:	pCMV6-Entry (PS100001)
E. coli Selection:	Kanamycin (25 ug/mL)
ORF Nucleotide Sequence:	>RC217673 representing NM_006711 Red=Cloning site Blue=ORF Green=Tags(s)

TTTTGTAATACGACTCACTATAGGGCGGCCGGAATTCGTCGACTGGATCCGGTACCGAGGAGATCTGCC  
GCC**CGATCGCC**

ATGGATTTATCAGGAGTAAAAAGAAGAGCTTGCTAGGAGTCAAAGAAAATAATAAAAAGTCCAGCACTA  
GGGCTCCTTACCTACCAAACGCAAAGACCGCTCAGATGAGAAGTCAAGGATCGCTCAAAGATAAAGG  
GGCCACCAAGGAGTCGAGTGAGAAGGATCGCGGCCGGACAAAACCCGAAAGAGGCGCAGCGCTCCAGT  
GGTAGCAGCAGTACCAGGTCTCGGTCCAGCTCGACTTCCAGCTCAGGCTCCAGCACCCAGCACTGGCTCAA  
GCAGTGGCTCCAGCTCTCCTCAGCATCCAGCCGCTCAGGAAGTCCAGCACCTCCGCAGCTCCAGCTC  
TAGCAGCTCTTCTGGCTCTCCAAGTCTTCTCGGCGCAGACACGACAACAGGAGGCGCTCCCGCTCCAAA  
TCCAAACCACCTAAAAGAGATGAAAAGGAGAGGAAAAGGCGGAGCCCATCTCCTAAGCCACCAAAGTGC  
ACATTGGGAGACTCACCCGGAATGTGACAAAGGATCACATCATGGAGATATTTCCACCTATGGGAAAAT  
TAAAATGATTGACATGCCCGTGAAAGGATGCATCCCCATCTGTCCAAAGGCTATGCGTACGTAGAGTTT  
GAGAATCCAGATGAAGCCGAGAAGGCGCTGAAGCATGGATGGAGGACAAATTGATGGCCAGGAGATCA  
CTGCCACCGCGTGTGGCCCCCTGGCTAGGCCACCCCCAGGAGATTCAGCCCTCCAGGAGAATGTT  
GCCACCACCGCTATGTGGCGCAGGTCTCCCCACGGATGAGGAGAAGGTCCCGCTCCCCGAGGCGCAGG  
TCCCCGTGCGCCGGAGATCACGGTCCCCGGCCGCCGCCACAGGAGCCGCTCCAGCTCCAACCTCT  
CCCGA

**ACGCGT**ACGCGGCCGCTCGAGCAGAACTCATCTCAGAAGAGGATCTGGCAGCAAATGATATCTGGATT  
ACAAGGATGACGACGATAAGGTTTAA



[View online »](#)

**Protein Sequence:** >RC217673 representing NM\_006711  
Red=Cloning site Green=Tags(s)

MDLSGVKKKSLLGVKENKKSSTRAPSPTKRKDRSDEKSKDRSKDKGATKESSEKDRGRDKTRKRRSASS  
 GSSSTRSRSSSTSSSGSSTSTGSSSGSSSSASSRSGSSSTSRSSSSSSSSGSPSPSRRRHDNRRRSRSK  
 SKPPKRDEKERRRSPSPKPTKVHIGRLTRNVTKDHIEMIFSTYGIKIMIDMPVERMHPHLSKGYAYVEF  
 ENPDEAEKALKHMDGGQIDGQEITATAVLAPWPRPPRRFSPRRRMLPPPPMWRRSPPRMRRRRSRSPRRR  
 SPVRRRSRSPGRRRRHSRSSNSSR

TRTRPLEQKLISEEDLAANDILDYKDDDDKV

**Chromatograms:** [https://cdn.origene.com/chromatograms/mk6288\\_b07.zip](https://cdn.origene.com/chromatograms/mk6288_b07.zip)

**Restriction Sites:** SgfI-MluI

**Cloning Scheme:**

Cloning sites used for ORF Shuttling:



\* The last codon before the Stop codon of the ORF

**ACCN:** NM\_006711

**ORF Size:** 915 bp

**OTI Disclaimer:** The molecular sequence of this clone aligns with the gene accession number as a point of reference only. However, individual transcript sequences of the same gene can differ through naturally occurring variations (e.g. polymorphisms), each with its own valid existence. This clone is substantially in agreement with the reference, but a complete review of all prevailing variants is recommended prior to use. [More info](#)

**OTI Annotation:** This clone was engineered to express the complete ORF with an expression tag. Expression varies depending on the nature of the gene.

**Components:** The ORF clone is ion-exchange column purified and shipped in a 2D barcoded Matrix tube containing 10ug of transfection-ready, dried plasmid DNA (reconstitute with 100 ul of water).

**Reconstitution Method:**

1. Centrifuge at 5,000xg for 5min.
2. Carefully open the tube and add 100ul of sterile water to dissolve the DNA.
3. Close the tube and incubate for 10 minutes at room temperature.
4. Briefly vortex the tube and then do a quick spin (less than 5000xg) to concentrate the liquid at the bottom.
5. Store the suspended plasmid at -20°C. The DNA is stable for at least one year from date of shipping when stored at -20°C.

**Note:** Plasmids are not sterile. For experiments where strict sterility is required, filtration with 0.22um filter is required.

**RefSeq:** [NM\\_006711.4](#)

**RefSeq Size:** 2038 bp

**RefSeq ORF:** 918 bp

**Locus ID:** 10921

**UniProt ID:** [Q15287](#)

**Cytogenetics:** 16p13.3

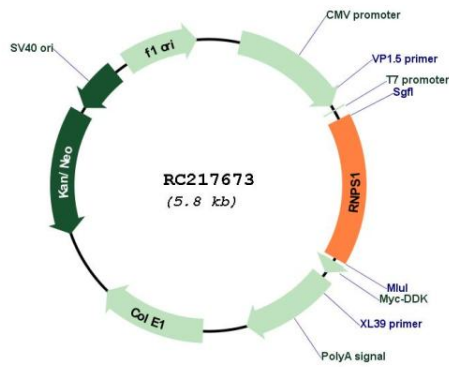
**Domains:** RRM

**Protein Families:** Transcription Factors

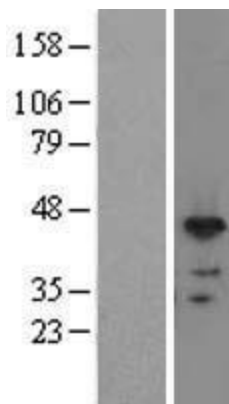
**MW:** 34 kDa

**Gene Summary:** This gene encodes a protein that is part of a post-splicing multiprotein complex involved in both mRNA nuclear export and mRNA surveillance. mRNA surveillance detects exported mRNAs with truncated open reading frames and initiates nonsense-mediated mRNA decay (NMD). When translation ends upstream from the last exon-exon junction, this triggers NMD to degrade mRNAs containing premature stop codons. This protein binds to the mRNA and remains bound after nuclear export, acting as a nucleocytoplasmic shuttling protein. This protein contains many serine residues. Several transcript variants encoding different isoforms have been found for this gene. [provided by RefSeq, Nov 2013]

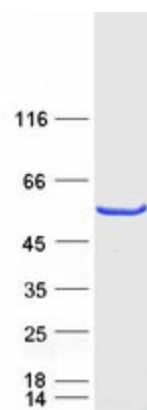
Product images:



Circular map for RC217673



Western blot validation of overexpression lysate (Cat# [LY416470]) using anti-DDK antibody (Cat# [TA50011-100]). Left: Cell lysates from untransfected HEK293T cells; Right: Cell lysates from HEK293T cells transfected with RC217673 using transfection reagent MegaTran 2.0 (Cat# [TT210002]).



Coomassie blue staining of purified RNPS1 protein (Cat# [TP317673]). The protein was produced from HEK293T cells transfected with RNPS1 cDNA clone (Cat# RC217673) using MegaTran 2.0 (Cat# [TT210002]).