

## Product datasheet for RC217672

### CCL14 (NM\_004166) Human Tagged ORF Clone

#### Product data:

**Product Type:** Expression Plasmids  
**Product Name:** CCL14 (NM\_004166) Human Tagged ORF Clone  
**Tag:** Myc-DDK  
**Symbol:** CCL14  
**Synonyms:** CC-1; CC-3; CKb1; FLJ16015; HCC-1; HCC-3; MCIF; NCC-2; NCC2; SCYA14; SCYL2; SY14  
**Vector:** pCMV6-Entry (PS100001)  
**E. coli Selection:** Kanamycin (25 ug/mL)  
**Cell Selection:** Neomycin  
**ORF Nucleotide Sequence:** >RC217672 representing NM\_004166  
Red=Cloning site Blue=ORF Green=Tags(s)

TTTTGTAATACGACTCACTATAGGGCGCCGGAATTCGTCGACTGGATCCGGTACCGAGGAGATCTGCC  
GCC**CGGATCGCC**

ATGAAGATCTCCGTGGCTGCCATTCCCTTCTTCTCCTCATCACCATCGCCCTAGGGACCAAGACTGAAT  
CCTCCTCAGGGGACCTTACCACCCCTCAGAGTGTCTTACCTACACTACCTACAAGATCCCAGCTCA  
GCGGATTATGGATTACTATGAGACCAACAGCCAGTGTCCAAGCCGGAATTGTCTTCATACCAAAGG  
GGCCATTCGTGTACCAACCCAGTGACAAGTGGGTCCAGGACTATATCAAGGACATGAAGGAGAAC

**ACGCGT**ACGCGGCCGCTCGAGCAGAACTCATCTCAGAAGAGGATCTGGCAGCAAATGATATCCTGGATT  
ACAAGGATGACGACGATAAGGTTTAA

**Protein Sequence:** >RC217672 representing NM\_004166  
Red=Cloning site Green=Tags(s)

MKISVAAIPFFLLITIALGKTESSSRGPYHPSECCFTYTTYKIPRQRIMDYETNSQCSKPGIVFITKR  
GHSVCTNPSDKWVQDYIKDMKEN

**TR**TRPLEQKLISEEDLAANDILDYKDDDDKV

**Chromatograms:** [https://cdn.origene.com/chromatograms/mk6266\\_e07.zip](https://cdn.origene.com/chromatograms/mk6266_e07.zip)

**Restriction Sites:** Sgfl-Mlul

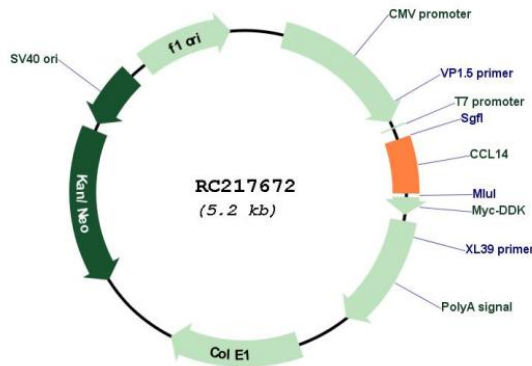


[View online »](#)

Cloning Scheme:



Plasmid Map:



ACCN:

NM\_004166

ORF Size:

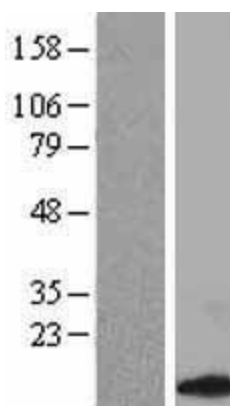
279 bp

OTI Disclaimer:

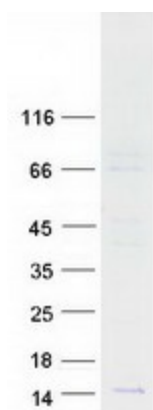
The molecular sequence of this clone aligns with the gene accession number as a point of reference only. However, individual transcript sequences of the same gene can differ through naturally occurring variations (e.g. polymorphisms), each with its own valid existence. This clone is substantially in agreement with the reference, but a complete review of all prevailing variants is recommended prior to use. [More info](#)

OTI Annotation:	This clone was engineered to express the complete ORF with an expression tag. Expression varies depending on the nature of the gene.
RefSeq:	<a href="#">NM_004166.4</a>
RefSeq Size:	1344 bp
RefSeq ORF:	281 bp
Locus ID:	6358
Domains:	IL8
Protein Families:	Druggable Genome, Secreted Protein
Protein Pathways:	Chemokine signaling pathway, Cytokine-cytokine receptor interaction
MW:	10.68 kDa
Gene Summary:	This gene, chemokine (C-C motif) ligand 14, is one of several CC cytokine genes clustered on 17q11.2. The CC cytokines are secreted proteins characterized by two adjacent cysteines. The cytokine encoded by this gene induces changes in intracellular calcium concentration and enzyme release in monocytes. Multiple transcript variants encoding different isoforms have been found for this gene. Read-through transcripts are also expressed that include exons from the upstream cytokine gene, chemokine (C-C motif) ligand 15, and are represented as GeneID: 348249. [provided by RefSeq, Dec 2009]

### Product images:



Western blot validation of overexpression lysate (Cat# [LY418173]) using anti-DDK antibody (Cat# [TA50011-100]). Left: Cell lysates from untransfected HEK293T cells; Right: Cell lysates from HEK293T cells transfected with RC217672 using transfection reagent MegaTran 2.0 (Cat# [TT210002]).



Coomassie blue staining of purified CCL14 protein (Cat# [TP317672]). The protein was produced from HEK293T cells transfected with CCL14 cDNA clone (Cat# RC217672) using MegaTran 2.0 (Cat# [TT210002]).