

Product datasheet for RC217670

KIF25 (NM_030615) Human Tagged ORF Clone

Product data:

Product Type:	Expression Plasmids
Product Name:	KIF25 (NM_030615) Human Tagged ORF Clone
Tag:	Myc-DDK
Symbol:	KIF25
Synonyms:	KNSL3
Mammalian Cell Selection:	Neomycin
Vector:	pCMV6-Entry (PS100001)
E. coli Selection:	Kanamycin (25 ug/mL)
ORF Nucleotide Sequence:	>RC217670 representing NM_030615 Red=Cloning site Blue=ORF Green=Tags(s)

TTTTGTAATACGACTCACTATAGGGCGGCCGGAATTCGTCGACTGGATCCGGTACCGAGGAGATCTGCC
GCC**CGATCGCC**

ATGACATGGACCTCAGGTCAGCTTCAGCGTGAGAAGCAGGCCAGGCCTGGGTCTGGAGCCGTCCTGGCCT
TCCAGATGACAAGGACCTCAGGGTTTATGGTCCAGCAGAGTCTCAGAGCGCGTCTTTGGAGATGTGTG
CCCCCTACTACTTCTCTTGGATGGTACAATGTTTGTGTTATGGCGTATGGACAGACGGGCAGCGGA
AAGAGCTATACCATGCTGGGACGCCATTCGACGACGGCCCTGTTCTGCCGTTGACCCACAGAGTGACT
TAGGAATTATCCCTAGAGTGGCTGAGGAGCTCTCAGGCTCATTTTGAAAATACCTCAAGAAGCCAAA
GGTTGAAGTCTCCATAGTGAAGTTTACAATAATGACATTTTGGACCTTCTGGCCAAAGACAGCATTGCA
GCAGTGTGCGGGGTCAAGCGTGAGGTGGTGACAGCCAAGGATGGACGGACAGAGGTTGCGCTGCTGGCCT
CTGAGGCTGTGCGGACGCGCTCGAACTGATGGAGCTCGTTTATGGAGGTCTGCAGCTCAGGGCGAAGCA
CCCCACCTGGTGACCGCGGATTCTCCAGGCTCACCTGATAATTACGGTGACTCTAACACAGCCTCC
TGCTCTGACAGCACTGCAGACCAAGCCTGCAGTGCCACCTCCCCAGGGAGCAAACAGAGGCAGGAAGGG
CAGGAAGGAGCCGAGAGCTTCTCAAGGGGCTTGCTCCACAGCTGGTTCCTGGGAACCCCGCAGGGCA
TGCGGAGCAGGTGCAGGCTCGACTACAGCTCGTGGACTCGGCCGCGCAGCAGTGCCTGGTGTGTCTGGA
GTGACCGGTTGGCCCTGAGGGAGATGGCGTGATCAGCCGACGCTTGGCCCTGGCAGGCGTCTGG
GGCTTTGTTGGAGCACGTTGGCCATGCCCGTACCGGAACAGCAGGCTCACCCACCTCCTTCAGGACTG
CCTCGGAGGCGATGCGAAGTTACTGGTATTCTCTGCATTTCTCCAGCCAGAGGCACCTGGCACAGACG
TTGCAGGGCCTGGGTTTCGGGATCCGAGCTCGGCAAGTCCAGCGAGGCCCTGCCGAAAGAAGCCGCCCA
GCTCCCAAACGGAGGGGAAGAGGAGGCCGGAT

ACGCGTACGCGGCCGCTCGAGCAGAACTCATCTCAGAAGAGGATCTGGCAGCAAATGATATCCTGGATT
ACAAGGATGACGACGATAAGGTTTAA



[View online »](#)

Protein Sequence: >RC217670 representing NM_030615
Red=Cloning site Green=Tags(s)

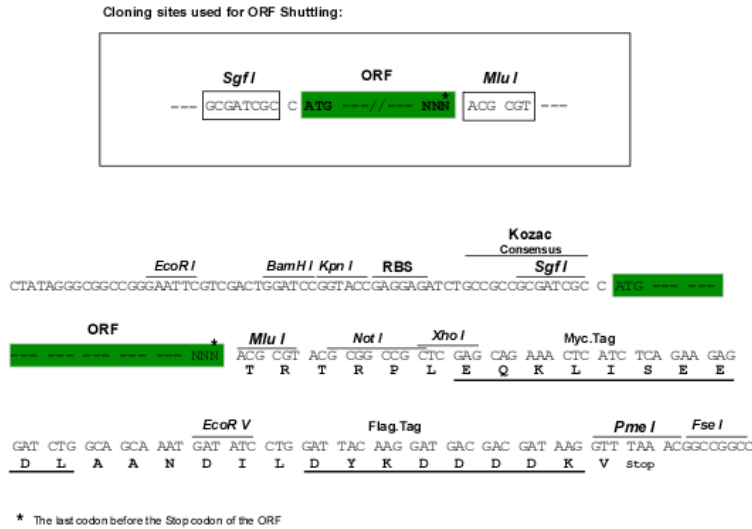
MTWTSQQLQREKQARPGSGAVLAFPDDKDLRVYGAESQSAVFGDVCPLLTSLLDGYNVCMAYGQTGSG
 KSYTMLGRHSDDGPVLPDPQSDLGIIPRVAEELFRLILENTRSPPKVEVSIVEVYNNIDFDLLAKDSIA
 AVSGVKREVVTAKDGRTEVALLASEAVGSASKLMELVHGGLQLRAKHPTLVHADSSRSHLIITVTLTAS
 CSDSTADQACSATLPREQTEAGRAGRSRRASQGALAPQLVPGNPAGHAEQVQARLQLVDSAGSECVGVS
 VTGLALREMACISRSALAAGVLAGLLEHRGHAPYRNSRLTHLLQDCLGGDAKLLVILCISPSQRHLAQT
 LQGLGFGIRARQVQGPARKKPPSSQTEGKRRPD

TRTRPLEQKLISEEDLAANDILDYKDDDDKV

Chromatograms: https://cdn.origene.com/chromatograms/mk8056_c01.zip

Restriction Sites: SgfI-MluI

Cloning Scheme:



ACCN: NM_030615

ORF Size: 1152 bp

OTI Disclaimer: The molecular sequence of this clone aligns with the gene accession number as a point of reference only. However, individual transcript sequences of the same gene can differ through naturally occurring variations (e.g. polymorphisms), each with its own valid existence. This clone is substantially in agreement with the reference, but a complete review of all prevailing variants is recommended prior to use. [More info](#)

OTI Annotation: This clone was engineered to express the complete ORF with an expression tag. Expression varies depending on the nature of the gene.

Components: The ORF clone is ion-exchange column purified and shipped in a 2D barcoded Matrix tube containing 10ug of transfection-ready, dried plasmid DNA (reconstitute with 100 ul of water).

Reconstitution Method:

1. Centrifuge at 5,000xg for 5min.
2. Carefully open the tube and add 100ul of sterile water to dissolve the DNA.
3. Close the tube and incubate for 10 minutes at room temperature.
4. Briefly vortex the tube and then do a quick spin (less than 5000xg) to concentrate the liquid at the bottom.
5. Store the suspended plasmid at -20°C. The DNA is stable for at least one year from date of shipping when stored at -20°C.

Note: Plasmids are not sterile. For experiments where strict sterility is required, filtration with 0.22um filter is required.

RefSeq: [NM_030615.2](#), [NP_085118.2](#)

RefSeq Size: 1510 bp

RefSeq ORF: 1155 bp

Locus ID: 3834

UniProt ID: [Q9UIL4](#)

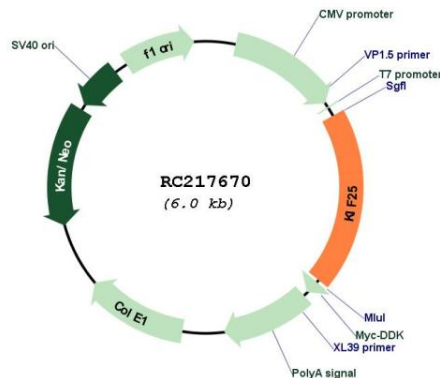
Cytogenetics: 6q27

Protein Families: Druggable Genome

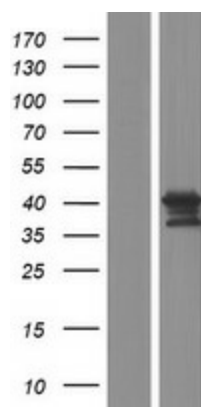
MW: 40.5 kDa

Gene Summary: The protein encoded by this gene is a member of the kinesin-like protein family. Protein family members are microtubule-dependent molecular motors that transport organelles within cells and move chromosomes during cell division. However, the particular function of this gene product has not yet been determined. Two alternatively spliced transcript variants which encode products have been described. Other splice variants have been found that lack exon 2 and the initiation codon for translation. [provided by RefSeq, Jul 2008]

Product images:



Circular map for RC217670



Western blot validation of overexpression lysate (Cat# [LY410794]) using anti-DDK antibody (Cat# [TA50011-100]). Left: Cell lysates from untransfected HEK293T cells; Right: Cell lysates from HEK293T cells transfected with RC217670 using transfection reagent MegaTran 2.0 (Cat# [TT210002]).