

## Product datasheet for RC217667

### LDLRAD2 (NM\_001013693) Human Tagged ORF Clone

#### Product data:

Product Type:	Expression Plasmids
Product Name:	LDLRAD2 (NM_001013693) Human Tagged ORF Clone
Tag:	Myc-DDK
Symbol:	LDLRAD2
Mammalian Cell Selection:	Neomycin
Vector:	pCMV6-Entry (PS100001)
E. coli Selection:	Kanamycin (25 ug/mL)
ORF Nucleotide Sequence:	>RC217667 representing NM_001013693 Red=Cloning site Blue=ORF Green=Tags(s)

TTTTGTAATACGACTCACTATAGGGCGGCCGGAATTCGTCGACTGGATCCGGTACCGAGGAGATCTGCC  
GCC**CGATCGCC**

ATGGAGGCTTGTGTCTTCTGCAGTTGCCCAAAGGTTGCTCTTCTGGGGCAGCCGCCCTGACTGCAA  
CTGCTTTGGAGACAGCCGACCTGGCGGAAGTGTGCGGGCAGACGTGGCAGGGGGACGGGCTGCTGCTGCG  
CTCGCACGCCGCATCGCGCAGGTTCTACTTCGTGGCTCCGGACACCGACTGCGGGCTCTGGGTGCAGGCG  
GCAGCCCCGGCGACCGGATCCGCTCCAGTTCGCTTCTCCTGGTCTACAGCCTGACCCCCGCGCCCC  
CGGCGCTCAACACCTCCTCCCCGGCCCCGGCCGACCCCGTGGCCCCGGCTCCTACCTGCGGTTCTACGA  
GGGCCCGCCGGGGCGCCCCGGCCCTGGGGTCCCCACTGTGCGGCCTGAACATCCCGGTGCCCTGTGGCA  
TCCTCCGGACCTTTCTAGGCCTGCGCCTGGTACAGAGGGCCGACCCCGCTGGACTTCGTGGGCG  
AAGTCACTCTTTCCGTCTGGGACCTTGTGGTGCCTACTTCCGCTGCCAGAATGGCAGGTGCATCCCTC  
AAGCCTCGTGTGTACCCCTGGGACATGGACAAGTGTGGCGATGGCAGTGACCAGGGCTCCTGGTACCA  
GCTGACTGCAGAGGTCCCTCTCCGGTCCCAGCCAGACAGGAAGTACAGATGCCCATACCTCCAGATCCC  
TGACTCCCTCCCAGCTCTGGGTCTGCAGGATCCCTCTGGATTGCAGCTGAGAGGAGTTCCCCAGCAGG  
CAGGGACCCACGAGACAAGACGCAGCTTTGGAAGGCTCCACTGAG

**ACGCGT**ACGCGGCCGCTCGAGCAGAAACTCATCTCAGAAGAGGATCTGGCAGCAAATGATATCCTGGATT  
ACAAGGATGACGACGATAAGGTTTAA



[View online »](#)

**Protein Sequence:** >RC217667 representing NM\_001013693  
 Red=Cloning site Green=Tags(s)

```
MEACCLLQLPQRLLLLGAAALTATALETADLAELCGQTWQGDGLLLRSHAASRRFYFVAPDTCGLWVQA
AAPGDRIRFQFRFFLVYSLTPAPPALNTSSPAPADPCAPGSYLRFYEGPPGAPRPLGSPLCGLNIPVPVA
SSGPFLGLRLVTRGRQPRVDFVGEVTSFRLGPCGAYFRCQNGRCIPSSLVCDPWGMDCNGDGSQGSWSP
ADCRGSPVPVSQTGSTDAHTSRSLTPSPALGSAGSLWIAAERSSPAGRDPTRQDAALEGSTE
```

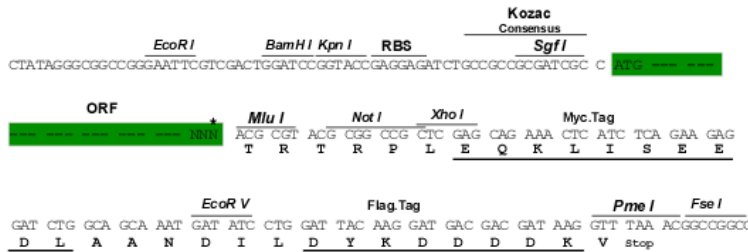
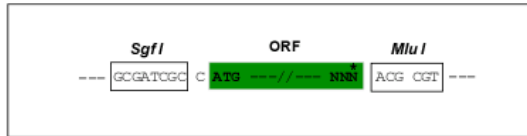
TRTRPLEQKLISEEDLAANDILDYKDDDDKV

**Chromatograms:** [https://cdn.origene.com/chromatograms/mk6268\\_f04.zip](https://cdn.origene.com/chromatograms/mk6268_f04.zip)

**Restriction Sites:** SgfI-MluI

**Cloning Scheme:**

Cloning sites used for ORF Shuttling:



\* The last codon before the Stop codon of the ORF

**ACCN:** NM\_001013693

**ORF Size:** 816 bp

**OTI Disclaimer:** The molecular sequence of this clone aligns with the gene accession number as a point of reference only. However, individual transcript sequences of the same gene can differ through naturally occurring variations (e.g. polymorphisms), each with its own valid existence. This clone is substantially in agreement with the reference, but a complete review of all prevailing variants is recommended prior to use. [More info](#)

**OTI Annotation:** This clone was engineered to express the complete ORF with an expression tag. Expression varies depending on the nature of the gene.

**Components:** The ORF clone is ion-exchange column purified and shipped in a 2D barcoded Matrix tube containing 10ug of transfection-ready, dried plasmid DNA (reconstitute with 100 ul of water).

**Reconstitution Method:**

1. Centrifuge at 5,000xg for 5min.
2. Carefully open the tube and add 100ul of sterile water to dissolve the DNA.
3. Close the tube and incubate for 10 minutes at room temperature.
4. Briefly vortex the tube and then do a quick spin (less than 5000xg) to concentrate the liquid at the bottom.
5. Store the suspended plasmid at -20°C. The DNA is stable for at least one year from date of shipping when stored at -20°C.

**Note:** Plasmids are not sterile. For experiments where strict sterility is required, filtration with 0.22um filter is required.

**RefSeq:** [NM\\_001013693.1](#), [NP\\_001013715.1](#)

**RefSeq Size:** 4012 bp

**RefSeq ORF:** 819 bp

**Locus ID:** 401944

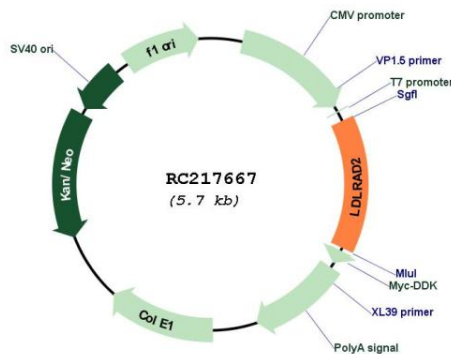
**UniProt ID:** [Q5SZ11](#)

**Cytogenetics:** 1p36.12

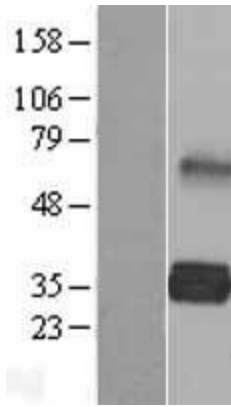
**Protein Families:** Druggable Genome

**MW:** 28.4 kDa

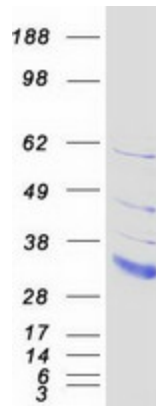
**Product images:**



Circular map for RC217667



Western blot validation of overexpression lysate (Cat# [LY423019]) using anti-DDK antibody (Cat# [TA50011-100]). Left: Cell lysates from untransfected HEK293T cells; Right: Cell lysates from HEK293T cells transfected with RC217667 using transfection reagent MegaTran 2.0 (Cat# [TT210002]).



Coomassie blue staining of purified LDLRAD2 protein (Cat# [TP317667]). The protein was produced from HEK293T cells transfected with LDLRAD2 cDNA clone (Cat# RC217667) using MegaTran 2.0 (Cat# [TT210002]).