

## Product datasheet for **RC217664**

### **IRX6 (NM\_024335) Human Tagged ORF Clone**

#### **Product data:**

|                           |   |
|---------------------------|---|
| Product Type:             | Expression Plasmids                     |
| Product Name:             | IRX6 (NM_024335) Human Tagged ORF Clone |
| Tag:                      | Myc-DDK                                 |
| Symbol:                   | IRX6                                    |
| Synonyms:                 | IRX-3; IRX7; IRXB3                      |
| Mammalian Cell Selection: | Neomycin                                |
| Vector:                   | pCMV6-Entry (PS100001)                  |
| E. coli Selection:        | Kanamycin (25 ug/mL)                    |



[View online »](#)

**ORF Nucleotide Sequence:**

>RC217664 representing NM\_024335  
 Red=Cloning site Blue=ORF Green=Tags(s)

TTTTGTAATACGACTCACTATAGGGCGGCCGGGAATTCGTCGACTGGATCCGGTACCGAGGAGATCTGCC  
 GCC**GCGATCGCC**

ATGTCCTTCCACACTTTGGACACCCGTACCGCGCGCTTCCAGTTTCTGGCGTCGGCAAGTTCAGCA  
 CCACATGCTGCGAATCTACCCAACGCTCTGTCTCAGATGTGGCATCAGGCTCCACCCAGCGCCCGCTCT  
 CTGCTGCGCACCTACGATAGTCGACTGCTGGCAGTGCAGCAGCGGAGCTGGGCGCCGCTTGGGCATC  
 TATGGAGCACCTATGCGGCCGCTGCAGCTGCCAGAGCTACCCTGGCTACCTGCCCTATAGCCAGAGC  
 CCCCCTACTGTATGGGGCACTGAATCCACAGTATGAATTTAAGGAGGCTGCAGGGAGTTTTACATCCAG  
 CCTGGCACAACCAGGAGCCTATTATCCCTATGAGCGGACTCTGGGCGAGTACCAATATGAACGGTATGGC  
 GCAGTGAATTGAGTGGCGCCGGTCGCCAAAAGAACGCGACCCGGGAGACCACAGTACACTCAAGGCCT  
 GGCTCAACGAGCACCGCAAAAACCCCTACCCACTAAGGGTGAGAAGATCATGCTGGCCATCATACCAA  
 GATGACCCTCACCCAGGTGTCCACTGGTTCGCCAACGCACGCCGCGCCTCAAGAAAGAGAACAAAATG  
 ACATGGGCGCCCAAGAACAAGGTGGGGAGGAGAGGAAGGCAGAGGGAGGAGAGGAGGACTCACTAGGCT  
 GCCTAACTGCTGACACCAAGAAGTTACTGCTAGCCAGGAGGCCCGGGGCTCCGGCTGAGTGACCTGGA  
 AGACCTGGAGGAAGAGGAGGAGGAGGAGGAGGAAGCTGAAGACGAGGAGGTAGTGGCCACAGCTGGGGAC  
 AGGCTGACGGAGTTCGAAAGGGCGCGCAGTCACTGCCTGGGCGCTGCGCTGCAGCTCGAGAGGGCCGAT  
 TGGAGCGCAGGGAGTGGCGCCTGGCTGCGCCCCGCTTCTCCTCAATGACCCTCCGGATCGGAAGAAGC  
 TGACTTCTCTCGGCGGAGACAGGCAGCCCTAGGTTGACCATGCACTACCCATGCTTGGAGAAACCGCGC  
 ATCTGGTCTCTGGCGCACACCGCGACAGCCAGCGCTGTTGAAGGTGACCCCCAGCCCGGCTAGGCCAC  
 GAAGTCTGAGTGCCGTATGATTCTGGACAGCCTCCTGCCTCTGCCCGGCGACTCTCAGTCCCCAGGACA  
 CTCGCGTGCAGCAGTCTTCTGCATACCCAAAAGCCTTTGGAAACCCCAAGTTTGCCTGCAGGGACTA  
 CCGCTGAACTGTGCGCCGTGCCCGGAGGAGCGAGCCTGTAGTGCAGTGCCAGTACCCGCTCTGGAGCAG  
 AAGCAGGT

**ACGCGT**ACGCGGCCGCTCGAGCAGAACTCATCTCAGAAGAGGATCTGGCAGCAATGATATCCTGGATT  
 ACAAGGATGACGACGATAAGGTTTAA

**Protein Sequence:**

>RC217664 representing NM\_024335  
 Red=Cloning site Green=Tags(s)

MSFPFHGHPYRGASQFLASASSSTTCCSTQRSVSDVASGSTPAPALCCAPYDSRLLGSARPELGAALGI  
 YGAPYAAAAAQSYPGYLPYSPEPPSLYGALNPQYEFKEAAGSFTSSLAQPGAYYPYERTLGQYQYERYG  
 AVELSGAGRRKNATRETTSTLKAWLNEHRKNPYPTKGEKIMLAIITKMTLTQVSTWTFANARRRLKKNKM  
 TWAPKNKGGEERKAEGGEEDSLGCLTADTKEVTASQEARGLRLSDLEDLEEEEEEEEEAEDEEVATAGD  
 RLTEFRKGAQSLPGPCAAAREGLERREGLAAPRF SFNDPSGSEEADFLSAETGSPRLTMHYPCLEKPR  
 IWSLAHTATASAVEGAPPARPRRSPECRMIPGQPPASARRLSVPRDSACDESSCIPKAFGNPKFALQGL  
 PLNCAPCRRSEPVVQCQYPSGAEAG

**TR**TRPLEQKLISEEDLAANDILDYKDDDDKV

**Chromatograms:**

[https://cdn.origene.com/chromatograms/ja1307\\_c09.zip](https://cdn.origene.com/chromatograms/ja1307_c09.zip)

**Restriction Sites:**

Sgfl-Mlul

**Cloning Scheme:**


**ACCN:** NM\_024335

**ORF Size:** 1338 bp

**OTI Disclaimer:** The molecular sequence of this clone aligns with the gene accession number as a point of reference only. However, individual transcript sequences of the same gene can differ through naturally occurring variations (e.g. polymorphisms), each with its own valid existence. This clone is substantially in agreement with the reference, but a complete review of all prevailing variants is recommended prior to use. [More info](#)

**OTI Annotation:** This clone was engineered to express the complete ORF with an expression tag. Expression varies depending on the nature of the gene.

**Components:** The ORF clone is ion-exchange column purified and shipped in a 2D barcoded Matrix tube containing 10ug of transfection-ready, dried plasmid DNA (reconstitute with 100 ul of water).

- Reconstitution Method:**
1. Centrifuge at 5,000xg for 5min.
  2. Carefully open the tube and add 100ul of sterile water to dissolve the DNA.
  3. Close the tube and incubate for 10 minutes at room temperature.
  4. Briefly vortex the tube and then do a quick spin (less than 5000xg) to concentrate the liquid at the bottom.
  5. Store the suspended plasmid at -20°C. The DNA is stable for at least one year from date of shipping when stored at -20°C.

**Note:** Plasmids are not sterile. For experiments where strict sterility is required, filtration with 0.22um filter is required.

**RefSeq:** [NM\\_024335.3](#)

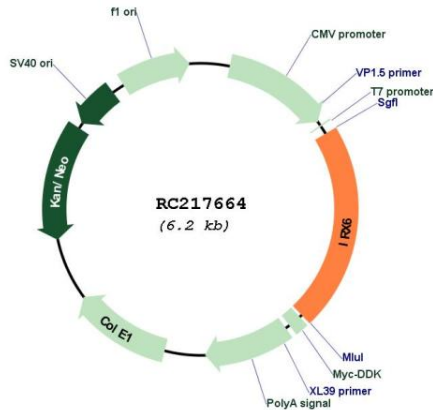
**RefSeq Size:** 2337 bp

**RefSeq ORF:** 1341 bp

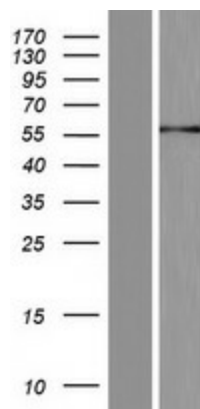
**Locus ID:** 79190

**UniProt ID:** [P78412](#)  
**Cytogenetics:** 16q12.2  
**Protein Families:** Transcription Factors  
**MW:** 48.1 kDa

**Product images:**



Circular map for RC217664



Western blot validation of overexpression lysate (Cat# [LY411294]) using anti-DDK antibody (Cat# [TA50011-100]). Left: Cell lysates from untransfected HEK293T cells; Right: Cell lysates from HEK293T cells transfected with RC217664 using transfection reagent MegaTran 2.0 (Cat# [TT210002]).