

## Product datasheet for RC217657

### RAGEF2 (RAPGEF6) (NM\_016340) Human Tagged ORF Clone

#### Product data:

Product Type:	Expression Plasmids
Product Name:	RAGEF2 (RAPGEF6) (NM_016340) Human Tagged ORF Clone
Tag:	Myc-DDK
Symbol:	RAGEF2
Synonyms:	KIA001LB; PDZ-GEF2; PDZGEF2; RA-GEF-2; RAGEF2
Mammalian Cell Selection:	Neomycin
Vector:	pCMV6-Entry (PS100001)
E. coli Selection:	Kanamycin (25 ug/mL)
ORF Nucleotide Sequence:	>RC217657 representing NM_016340 Red=Cloning site Blue=ORF Green=Tags(s)

TTTTGTAATACGACTCACTATAGGGCGCCGGGAATTCGTCGACTGGATCCGGTACCGAGGAGATCTGCC  
GCC**CGATCGCC**

ATGAACTCACCCGTGGACCCTGGCGCTAGGCAGGCGTTGAGGAAGAAGCCACCCGAGCGGACTCCCAGG  
ACTTAAATACTATTTATCTTATCTTCATGGAATGGAAATATTATCAAATCTCAGGAACATCAGCTTAG  
ATTAATGTCTGCAAGAGCAGCTATGAGAGATACAGTGGCAATCAGGTTCTCTTTGTTCAGAAACGATT  
GCCAGATGTTGGTATATCCTACTTTCTGGACTGTGCTTGTGAAAGGCTCCATGGTCTTGCTCCTTGA  
GTTTTGGTAAGCAGTTTGGAGGAAAAAGAGGATGTGATTGTCTTGTATTAGAGCCTTCAGAAATGATTGT  
GGTAGAGAATGCCAAAGATAATGAAGATAGTATTCTACAAGAGAAATTCCTGCCAGACAATCCCGAAGA  
AGATTTTCGAAAAATTAATAAAGGAGAGCGCCAAACCACTACTGATGATGTGGAGGTTAACAGCTATC  
TTTCTCTCCAGCTGATCTTACCAAGATGCATCTCACAGAAAACCTCATCCACAGGTGACTCATGTGTC  
TTCTAGTCAGTCTGGTTGTAGCATTGCCAGTACTCTGGAAGCAGCAGTTTATCTGATATCTATCAGGCT  
ACGGAGAGTGAGGTAGGAGATGTAGATTGACACGTCTTCAGAAGGACCTGTTGATTCTGAGGATGACG  
AAGAGGAAGATGAAGAGATTGATCGAACAGATCCATTGCAGGGGCGAGATCTTGTTCGAGAATGTCTTGA  
AAAAGAACCTGCAGACAAAACCTGATGATGACATTGAACAATTGCTGGAGTTTATGCACCAGCTCCCTGCA  
TTTGCAAACATGACCATGTCTGTAAGGAGAGAACTCTGCTCAGTGATTTTTTGAAGTGGTAGAGCAGG  
CTGGAGCTATTATTCTTGAAGATGGGCAAGAGCTTGACTCATGGTATGTTATTTAAACGGCAGCTGTGGA  
AATCAGTCATCCAGATGGAAAAGTTGAAAATTTGTTTATGGGAAATAGTTTTGGAATTACTCCCACTCTG  
GATAAGCAGTACATGCATGGAATTGTCAGGACTAAAGTAGATGATTGTCAGTTTGTCTGCATAGCCAGC  
AAGATTATTGGAGAATTTAAACCATGTGGAAAAAATACCCATAAAGTTGAGGAAGAGGGAGAAATTTGT  
TATGGTACATGAGCATCGGGAAC TAGACCGGAGTGAACAGGAAAGGACACATTGTGATCAAGGCAACA  
CCTGAGCGTCTCATAATGCATTTAATAGAAGAACATTCCATCGTGGATCCAACCTATATAGAAGATTTTC  
TATTAACCTACAGGACATTTCTTGAAGTCTTTGGATGTTGGGCAAACTATTGGAATGTTTAAAGT  
CGACAGCTTAAGAGATAAGGTGACACGGATTGTATTATTATGGGTAATAATCATTTTAAATGATTTTGA



[View online »](#)

GGTGACCCTGCTATGACTCGATTCTAGAGGAATTTGAAAAAATCTGGAAGATACAAAGATGAATGGTC  
 ATCTCCGGTTATTGAATATTGCCTGTGCTGCAAAGGCTAAGTGGAGACAGGTTGTGCTGCAAAAGGCTTC  
 CCGCGAGTCCCCTCTACAATTCAGCCTTAATGGAGGGAGTGAGAAAGGATTTGGTATTTTGTGAAGGA  
 GTAGAACCTGGTAGCAAAGCTGCTGATTCAGGACTGAAACGTGGTGATCAGATTATGGAAGTAAATGGAC  
 AAAACTTTGAGAATATTACATTTATGAAAGCCGTTGAAATTTTGAGGAATAACTCATCTTGCACCTTAC  
 TGTGAAGACCAACATTTTGTGTTCAAAGAGTTACTTTTTAGGACTGAACAAGAGAAATCTGGTGTTCCT  
 CATATTCCTCAAAATGCTGAAAAAAAAGTAATCGCCATTCTATCCAGCATGTGCCAGGAGATATTGAAC  
 AGACATCACAGGAGAAAGGAAGTAAGAAAAGTTAAAGCAAATACTGTTTCAGGTGGAAGAAAACAAAATCAG  
 GAAGATTTTGGATAAAACACGATTTAGTATCTTGCCTCCTCAAGCTATTTAGTGATGGAGGCCAAGCCAA  
 TCACAAGATGACAGCATTGTGGGAACAAGGCACTGTAGGCATAGTCTGGCTATAATGCCCATCCCTGGAA  
 CACTCTCATCCAGCAGCCCTGATCTCCTGCAGCCTACCACCAGTATGTTGGATTTTCCAATCCTTCAGA  
 TATCCCTGATCAAGTTATAAGAGTTTTCAAAGTGGATCAGCAAAGTTGCTACATTATCATCAGTAAAGAC  
 ACCACAGCTAAAGAAGTAGTTTTTTCATGCTGTTTCAATGAAATTTGGTTTGACCGGTGCATCCGACACATATT  
 CTCTCTGTGAAGTTTCTGTTACTCCTGAGGGTGCATAAAACAGAGAAGACTTCCAGATCAGTTCTCCAA  
 ATTAGCTGATAGAATCAACTCAATGGAAGGTATTACTTAAAAAATAACATGGAAACAGAAACCTTATGT  
 TCAGATGAAGATGCTCAAGAAGTAAAGGAAAGCCAGCTATCCATGCTGCAGCTCAGTACCATTGAGG  
 TGGCCACCAGCTGTCAATGAGGGACTTTGATTTGTTTCGTAATATTGAACCGACTGAGTACATCGATGA  
 CCTTTTTAAGTTAAATTCAAAAACAGGAAATACTCATTGGAAGAGGTTTGGAGCATTGTAACCAAGAG  
 ACATTCTGGGTTGCCTCAGAAATTTTAACTGAAGCAATCAGCTCAAACGAATGAAGATTATTAAGCATT  
 TTATTAATGCACTTCATTGTGCGAGAATGTAAGAAGTTCAATTCATGTTTGAATAAAGTGGCTT  
 GAACCTGGCATCTGTAGCAAGACTCAGAGGAAGTTGGGAAAAGTTACCAAGCAATACGAGAAACATCTT  
 CAAGATCTACAAGACATTTTTCATCCACTTCCCTGTTGTCAGAAAGATATGACATTTCTACATGAGGAAA  
 TGACTCCAAAGTAGATGTTTGTAGTAAACTTTGAGAAGTTAAGAATGATTTCAGGAAATCCGCAAGTT  
 GTTCAATGACTTCTGCTAACATGGACCCAGCTATGATGTTTCGACAGAGGTCAGTCAAGGAAGCA  
 CAAATTCAAACATGCTGGATGTTTCAGGGAGGTGCTCACAAAAAAGGGCACGCCGAGCTCTCTGTTAA  
 TGCCAAGAAGCTATATGAGGATGCCCAATGGCAAGGAAGGTGAAGCAGTATCTTCCAGTCTCGATGTA  
 GAGACAGATGAGGAGAAGTTCCAGATGATGTCATTACAGTGGGAGCCTGCATATGGTACCTTGACCAAGA  
 ATTTAAGTGAGAAAAGATCAGCCAAATCATCTGAAATGTCTCCAGTGCCTATGAGGTCAGCTGGCCAAAC  
 AACTAAAGCCCACTTGCATCAACCCACAGAGTAAGCCAGGTGCTTCAGGTGCCAGCTGTTAATTTGCAC  
 CCCATCAGGAAGAAGGGCAACAAAAGACCCTGCACTGAATACAAGTTTACCTCAGAAAGTTTTAGGAA  
 CAACTGAAGAAATAAGTGGTAAGAAGCATACAGAAGACACTATTTCTGTGGCGTCATCTTACATCTAG  
 TCCTCCTGCATCTCCTCAAGGCTCCCCTCACAAGGTTACACACTTATTCCATCAGCTAAATCTGACAAC  
 TTGTCTGACTCCAGCCATAGTGAGATTTCTTACGGTCCAGCATCGTGAGCAATTGTTCTGTTGACTCCA  
 TGTCTGCAGCTCTACAGGATGAACGGTGTCTCTCAGGCCCTGGCAGTCCCTGAATCCACTGGGGCATT  
 GGAAAAGACAGAGCAGCTTCAGGGATAGGAGATCATAGTCAACATGGCCCTGGGTGGACTCTTGAAG  
 CCATCTTAATCAAGTGTAGTGTCTCATCGTCTGTGAGCAATGAAGAGATTTCTCAAGAGCATATCA  
 TTATAGAAGCAGCTGACAGTGGTGGTGGAAAGTTGGACTTCGTGTTCAAGCAGCTCCCATGACAACCTCCA  
 AAGCCTTCCAAACCCAAAAAGCTGGGATTTTTTGAACCTTACAGACATACCCATTTGGATGACCCCAT  
 GCTGAAGTTGAACCCACTGACTCTGAGCCCTATTCTGTTCTAAAAGCTGCTCTAGAAGTTGTGGGCAAT  
 GTAAAGGAAGCCTAGAGAGAAAGAGTTGGACCTCCTCCAGTTCTCTGTCTGACACGTATGAACCAACTA  
 TGGGACAGTTAAACAGAGAGTATTGGAGAGCACCCAGCTGAGTCATCTGAAGGCTTGGACCCCAAGGAT  
 GCCACTGACCCAGTTTATAAACTGTCACCTTCAAGTACAGAAAAGGGCTTGATTGTGACTGTGTCACT  
 CACCAAGAAGGACGATAGGTATAGGGAGCCACCTCCACTCCTCCAGGATATTTGGGGATTTCTTAGC  
 GGACCTAAAGGAAGGACCCACACACACCTAAAACCTCCAGATTATAGTGTGGCAGTGCAGAGGTCAAAG  
 ATGATGCATAACAGCCTCTCTAGACTGCCACCAGCTTCTCTCAGTAGCAACCTCGTGGCCTGTGTTCCAT  
 CGAAGATTGTAACCTCAGCCTCAGAGGCATAATTTGCAGCCATTCCATCCTAAACTAGGAGATGTGACTGA  
 TGCAGATAGCGAAGCAGATGAAAATGAACAAGTTTCAGCAGTC

ACGCGTACGCGGCCGCTCGAGCAGAACTCATCTCAGAAGAGGATCTGGCAGCAAATGATATCCTGGATT  
 ACAAGGATGACGACGATAAGGTTTAA

**Protein Sequence:** >RC217657 representing NM\_016340  
 Red=Cloning site Green=Tags(s)

MNSPVDPGARQALRKKPPERTPEDLNTIYSYLGMEILSNLREHQLRLMSARARYERYSGNQVLCFSETI  
 ARCWYILLSGSVLVKGSMLPPCSFGKQFGGKRGCDCLVLEPSEMI VVENAKDNEDSILQREIPARQSRR  
 RFRKINYKGERQITITDDVEVNSYLSLPADLTKMHLTENPHQPQVTHVSSSQSGCSIASDSGSSLSDIYQA  
 TESEVGDVDLTRLPEGPVDESEDEEEDIEIDRTDPLQGRDLVRECLEKEPADKTDDEIEQLLEFMHQLPA  
 FANMTMSVRRELCSVMIFEVVEQAGAIILEDGQELDSWYVILNGTVEISHPDGKVENLFGNSFGITPTL  
 DKQYMHGIVRTKVDDCQFVCI AQQDYWRILNHVEKNTHKVEEAGEI VMVHEHRELD RSGTRKGHIVIKAT  
 PERLIMHLIEEHSIVDPTYIEDFLLTYRTFLESPLDVGIKLLEWFKIDSLRDKVTRIVLLWVNNHFNDFE  
 GDPAMTRFLEEFKNLEDTKMNGHLRLLNIACA AKAKWRQVVLQKASRESPLQFSLNGGSEKGFVVEG  
 VEPGSKAADSGLRGDQIMEVNGQNFENITFMKAVEILRNTHLALTVKTNIFVFKELLFRTEQEKSGVP  
 HIPKIAEKSNRHSIQHVPGDIEQTSQEKGSKKVKANTVSGGRNKIRKILDKTRFSILPPKLFSDGGLSQ  
 SQDDSI VGT RHRHSLAIMP I PGTLS SSSPDLLQPTT SMLDFSNP SDIPDQVIRVFKVDQ QSCYIIISKD  
 TTAKEVVFHAVHEFGLTGASDTYSLCEVSVTPEGVIKQRRLPDQF SKLADRIQLNGRYYLKNNMETETLC  
 SDEDAQELVKESQLSMLQLSTIEVATQLSMRDFDLFRNIEPTEYIDDLFKLNSKTNTHLKRFEIDIVNQE  
 TFWVASEILTEANQLKRMKIKHFIKIALHCRECKNFNSMFAIISGLNLASVARLRGTWEKLP SKYEKHL  
 QDLQDIFDPSRMAKYRNILSSQSMQPIIPLFPVVKDMTFLHEGNSKVDGLVNF EKLRMISKEIRQV  
 VRMTSANMDPAMMFRQRSLSQGSNTSNMLDVQGGAHKKRARRSLLNAKLYEDAQMARKVKQYLSLSDV  
 ETDEEFQMMSLQWEPAYGTLTKNLSEKRSKSSSEMPVPMRSAGQTTKAHLHQPHRVSVLQVPAVNLH  
 PIRKKGQTKDPALNTSLPQKVLGTTEEISGKKHTEDTISVASSLHSSPPASPQGSPhkGYTLIPSAKSDN  
 LSDSSHSEISSRSIVSNCSVDSMSAALQDERCSSQALAVPESTGALEKTEHASGIGDHSQHGPWTLLK  
 PSLIKCLAVSSSVSNEEISQEHIIIEAADSGRGSWTSCSSSHDNFQSLPNPKSWDFLNSYRHTHLDDPI  
 AEVEPTDSEPYSCSKSRTCGQCKGSLERKSWTSSSSLSDTYEPNYGTVKQRVLESTPAESSEGLDPKD  
 ATDPVYKTVTSSTKGLIYVCVTS PKKDDRYREPPPTPPGYLGISLADLKEGPHHLKPPDYSVAVQRSK  
 MMHNSLRLPPASLSSNLVACVPSKIVTQPQRHNLQPFHPKLGVDTDADSEADENEQVSAV

TRTRPLEQKLISEEDLAANDILDYKDDDDKV

**Chromatograms:** [https://cdn.origene.com/chromatograms/mk8015\\_b06.zip](https://cdn.origene.com/chromatograms/mk8015_b06.zip)

**Restriction Sites:** SgfI-MluI

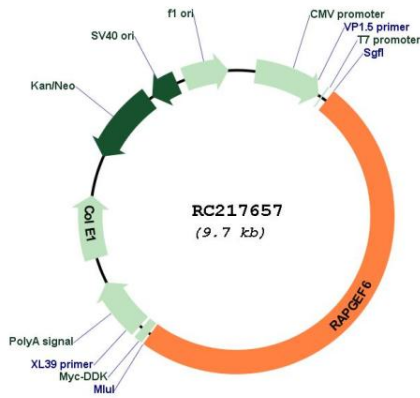
**Cloning Scheme:**



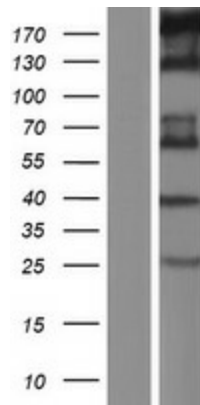
**ACCN:** NM\_016340

<b>ORF Size:</b>	4803 bp
<b>OTI Disclaimer:</b>	The molecular sequence of this clone aligns with the gene accession number as a point of reference only. However, individual transcript sequences of the same gene can differ through naturally occurring variations (e.g. polymorphisms), each with its own valid existence. This clone is substantially in agreement with the reference, but a complete review of all prevailing variants is recommended prior to use. <a href="#">More info</a>
<b>OTI Annotation:</b>	This clone was engineered to express the complete ORF with an expression tag. Expression varies depending on the nature of the gene.
<b>Components:</b>	The ORF clone is ion-exchange column purified and shipped in a 2D barcoded Matrix tube containing 10ug of transfection-ready, dried plasmid DNA (reconstitute with 100 ul of water).
<b>Reconstitution Method:</b>	<ol style="list-style-type: none"><li>1. Centrifuge at 5,000xg for 5min.</li><li>2. Carefully open the tube and add 100ul of sterile water to dissolve the DNA.</li><li>3. Close the tube and incubate for 10 minutes at room temperature.</li><li>4. Briefly vortex the tube and then do a quick spin (less than 5000xg) to concentrate the liquid at the bottom.</li><li>5. Store the suspended plasmid at -20°C. The DNA is stable for at least one year from date of shipping when stored at -20°C.</li></ol>
<b>RefSeq:</b>	<a href="#">NM_016340.6</a>
<b>RefSeq Size:</b>	6390 bp
<b>RefSeq ORF:</b>	4806 bp
<b>Locus ID:</b>	51735
<b>UniProt ID:</b>	<a href="#">Q8TEU7</a>
<b>Cytogenetics:</b>	5q31.1
<b>Domains:</b>	RA, cNMP, RasGEFN, PDZ, RasGEF
<b>MW:</b>	179.2 kDa
<b>Gene Summary:</b>	Guanine nucleotide exchange factor (GEF) for Rap1A, Rap2A and M-Ras GTPases. Does not interact with cAMP.[UniProtKB/Swiss-Prot Function]

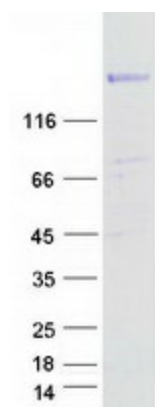
Product images:



Circular map for RC217657



Western blot validation of overexpression lysate (Cat# [LY414036]) using anti-DDK antibody (Cat# [TA50011-100]). Left: Cell lysates from untransfected HEK293T cells; Right: Cell lysates from HEK293T cells transfected with RC217657 using transfection reagent MegaTran 2.0 (Cat# [TT210002]).



Coomassie blue staining of purified RAPGEF6 protein (Cat# [TP317657]). The protein was produced from HEK293T cells transfected with RAPGEF6 cDNA clone (Cat# RC217657) using MegaTran 2.0 (Cat# [TT210002]).