

Product datasheet for RC217648

Sclerostin (SOST) (NM_025237) Human Tagged ORF Clone

Product data:

Product Type:	Expression Plasmids
Product Name:	Sclerostin (SOST) (NM_025237) Human Tagged ORF Clone
Tag:	Myc-DDK
Symbol:	Sclerostin
Synonyms:	CDD; DAND6; SOST1; VBCH
Mammalian Cell Selection:	Neomycin
Vector:	pCMV6-Entry (PS100001)
E. coli Selection:	Kanamycin (25 ug/mL)
ORF Nucleotide Sequence:	>RC217648 representing NM_025237 Red=Cloning site Blue=ORF Green=Tags(s)

TTTTGTAATACGACTCACTATAGGGCGGCCGGAATTCGTCGACTGGATCCGGTACCGAGGAGATCTGCC
GCC**CGATCGCC**

ATGCAGCTCCCACTGGCCCTGTGTCTCGTCTGCCTGCTGGTACACACAGCCTTCCGTGTAGTGGAGGGCC
AGGGGTGGCAGGCGTTCAAGAATGATGCCACGGAAATCATCCCCGAGCTCGGAGAGTACCCCGAGCCTCC
ACCGGAGCTGGAGAACAACAAGACCATGAACCGGGCGGAGAACGGAGGGCGGCCCTCCCACCACCCCTTT
GAGACAAAGACGTGTCCGAGTACAGCTGCCGCGAGCTGCACTTACCCGCTACGTGACCGATGGGCCGT
GCCGACGCGCAAGCCGGTCAACGAGCTGGTGTGCTCCGGCCAGTGGCCCGCGCGCAAGGTGCGCCTGGTGGCCT
CGCATCGGCCGCGCAAGTGGTGGCGACCTAGTGGGCCGACTTCCGCTGCATCCCCGACCGCTACCGC
GCGCAGCGCTGCAAGTGTGTCCCGGTGGTGGCGCCGCGCGCGCAAGGTGCGCCTGGTGGCCT
CGTGCAAGTGCAAGCGCCTCACCCGCTTCCACAACAGTCCGAGCTCAAGGACTTCGGGACCGAGGCCGC
TCGGCCGCAAGGGCCGAAGCCGCGGCCCGCGCCCGGAGCGCCAAAGCCAACCGAGCCGAGCTGGAG
AACGCCTAC

ACGCGTACGCGGCCGCTCGAGCAGAACTCATCTCAGAAGAGGATCTGGCAGCAAATGATATCCTGGATT
ACAAGGATGACGACGATAAGGTTTAA



[View online »](#)

Protein Sequence: >RC217648 representing NM_025237
 Red=Cloning site Green=Tags(s)

MQLPLALCLVCLLVHTAFRVVEGQGWQAFKNDATEIIPELGEYEPPELNNKTMNRAENGGRPPHHPF
 ETKDVSEYSCRELHFTRYVTDGPCRSAPVTELVCSGQCGRLLPNAIGRGKWRPSPGPDFRCIPDRYR
 AQRVQLLCPGGEAPRARKVRLVASCKCKRLTRFHNQSELKDFGTEAARPQKGRKPRPRARSAKANQAELE
 NAY

TRTRPLEQKLISEEDLAANDILDYKDDDDKV

Chromatograms: https://cdn.origene.com/chromatograms/mk6101_c09.zip

Restriction Sites: SgfI-MluI

Cloning Scheme:



ACCN: NM_025237

ORF Size: 639 bp

OTI Disclaimer: The molecular sequence of this clone aligns with the gene accession number as a point of reference only. However, individual transcript sequences of the same gene can differ through naturally occurring variations (e.g. polymorphisms), each with its own valid existence. This clone is substantially in agreement with the reference, but a complete review of all prevailing variants is recommended prior to use. [More info](#)

OTI Annotation: This clone was engineered to express the complete ORF with an expression tag. Expression varies depending on the nature of the gene.

Components: The ORF clone is ion-exchange column purified and shipped in a 2D barcoded Matrix tube containing 10ug of transfection-ready, dried plasmid DNA (reconstitute with 100 ul of water).

Reconstitution Method:

1. Centrifuge at 5,000xg for 5min.
2. Carefully open the tube and add 100ul of sterile water to dissolve the DNA.
3. Close the tube and incubate for 10 minutes at room temperature.
4. Briefly vortex the tube and then do a quick spin (less than 5000xg) to concentrate the liquid at the bottom.
5. Store the suspended plasmid at -20°C. The DNA is stable for at least one year from date of shipping when stored at -20°C.

RefSeq: [NM_025237.3](#)

RefSeq Size: 2322 bp

RefSeq ORF: 642 bp

Locus ID: 50964

UniProt ID: [Q9BQB4](#)

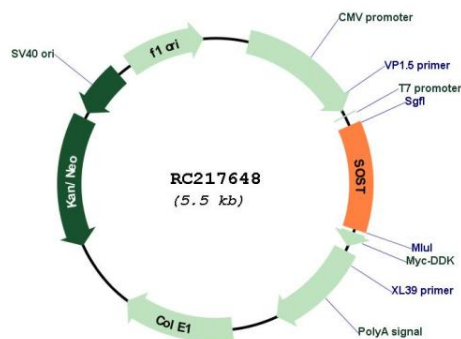
Cytogenetics: 17q21.31

Protein Families: Druggable Genome, Secreted Protein

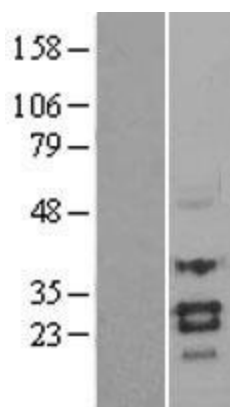
MW: 21.5 kDa

Gene Summary: Sclerostin is a secreted glycoprotein with a C-terminal cysteine knot-like (CTCK) domain and sequence similarity to the DAN (differential screening-selected gene aberrative in neuroblastoma) family of bone morphogenetic protein (BMP) antagonists. Loss-of-function mutations in this gene are associated with an autosomal-recessive disorder, sclerosteosis, which causes progressive bone overgrowth. A deletion downstream of this gene, which causes reduced sclerostin expression, is associated with a milder form of the disorder called van Buchem disease. [provided by RefSeq, Jul 2008]

Product images:



Circular map for RC217648



Western blot validation of overexpression lysate (Cat# [LY403063]) using anti-DDK antibody (Cat# [TA50011-100]). Left: Cell lysates from untransfected HEK293T cells; Right: Cell lysates from HEK293T cells transfected with RC217648 using transfection reagent MegaTran 2.0 (Cat# [TT210002]).