

Product datasheet for RC217647

RDM1 (NM_145654) Human Tagged ORF Clone

Product data:

Product Type:	Expression Plasmids
Product Name:	RDM1 (NM_145654) Human Tagged ORF Clone
Tag:	Myc-DDK
Symbol:	RDM1
Synonyms:	RAD52B
Mammalian Cell Selection:	Neomycin
Vector:	pCMV6-Entry (PS100001)
E. coli Selection:	Kanamycin (25 ug/mL)
ORF Nucleotide Sequence:	>RC217647 ORF sequence Red=Cloning site Blue=ORF Green=Tags(s)

TTTTGTAATACGACTCACTATAGGGCGGCCGGAATTCGTCGACTGGATCCGGTACCGAGGAGATCTGCC
GCC**CGATCGCC**

ATGGCGGAGTTGGTACCTTTTTCGGTCCCATCGAGAGTGACAAAACCTTGCTAGTGTGGGAGCTGAGCT
CCGGACCCACGGCCGAGGCTTTGCATCATTCTCTGTTACAGCATTCTCAGTTTGGCCTTCTGTATTC
AGTCCGGTCTTCCCAAATGCTGCAGTGGCCATCCTGGTTTCTATGCCGTCATTAAGTTTTATTCTGCA
AGGGCTGCCACAGAGCCAAAAGGCATGCGACCGGAAGCAGCTTTTTCAGAAATCTCCAGTCAAGGTTT
GTCTTGGCACCAGACATAAGGCAGTTCAACATCAAGCCCTTGCCTGAACAGTTCCAATGCCAAGAACT
GGCGAATTACTACTTTGGTTTCAATGGTGGTCCAAAAGGATCATCAAGCTTCAGGAGCTTCTGACCTT
GAAGAAAGGAAAATGAAGATAGCATGGTGCCACTTCCGAAGCAAAGCCTGAAGTTCTTCTGTGCTTTAG
AAGTGGTGTGCCATCCTGTGATTGCAGGAGTCCCTGGCATTGGCTTGGTGGAGGAGCCTATGGATAAGGT
GGAGGAAGGACATTATCATTCTTATGAAAAGGAAGACAGCCAGAAAGCTTGTATTGAGAAGGCTTTG
TCAGATGCATTCCAGAACTGTTGATTGTTGTTCTAGAAAGTGGTAAAATAGCTGTGGAGTACAGACCCA
GTGAAGACATCGTAGGTGTCAGATGCGAAGAAGAACTACACGGTTTAATTCAAGTCCCTTGTCTCCCTG
GAAGCAGTATGGCCAAGAGGAGGAAGGGTATCTCTCGGATTTAGCTTGGAGGAGGAAGATTCAGGCTG
CCAGAACTTGAC

ACGCGTACGCGGCCGCTCGAGCAGAAACTCATCTCAGAAGAGGATCTGGCAGCAAATGATATCCTGGATT
ACAAGGATGACGACGATAAGGTTTAA



[View online »](#)

Protein Sequence: >RC217647 protein sequence
Red=Cloning site Green=Tags(s)

MAELVPFAVPIESDKTLLVWELSSGPTAEALHSLFTAFSQFGLLYSVRVFPNAAVAHPGFYAVIKFYSA
 RAAHRAQKACDRKQLFQKSPVKVRLGTRHKAVQHQALALNSSKCQELANYYFGFNGWSKRIIKLQELSDL
 EERENEDSMVPLPKQSLKFFCALEVVLPSDCDRSPGIGLVEEPMDKVEEGPLSFLMKRKTAKKLAIQKAL
 SDAFQKLLIVVLESGKIAVEYRPSIEDIVGRCEEELHGLIQVPCSPWKQYGQEEEGYLSDFSLEEEEFRL
 PELD

TRTRPLEQKLISEEDLAANDILDYKDDDDKV

Chromatograms: https://cdn.origene.com/chromatograms/mk6472_c05.zip

Restriction Sites: SgfI-MluI

Cloning Scheme:



ACCN: NM_145654

ORF Size: 852 bp

OTI Disclaimer: The molecular sequence of this clone aligns with the gene accession number as a point of reference only. However, individual transcript sequences of the same gene can differ through naturally occurring variations (e.g. polymorphisms), each with its own valid existence. This clone is substantially in agreement with the reference, but a complete review of all prevailing variants is recommended prior to use. [More info](#)

OTI Annotation: This clone was engineered to express the complete ORF with an expression tag. Expression varies depending on the nature of the gene.

Components: The ORF clone is ion-exchange column purified and shipped in a 2D barcoded Matrix tube containing 10ug of transfection-ready, dried plasmid DNA (reconstitute with 100 ul of water).

Reconstitution Method:

1. Centrifuge at 5,000xg for 5min.
2. Carefully open the tube and add 100ul of sterile water to dissolve the DNA.
3. Close the tube and incubate for 10 minutes at room temperature.
4. Briefly vortex the tube and then do a quick spin (less than 5000xg) to concentrate the liquid at the bottom.
5. Store the suspended plasmid at -20°C. The DNA is stable for at least one year from date of shipping when stored at -20°C.

RefSeq: [NM_145654.4](#)

RefSeq Size: 1166 bp

RefSeq ORF: 855 bp

Locus ID: 201299

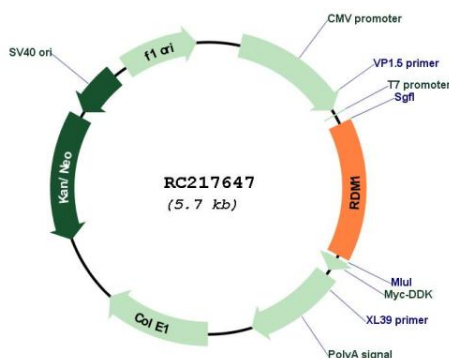
UniProt ID: [Q8NG50](#)

Cytogenetics: 17q12

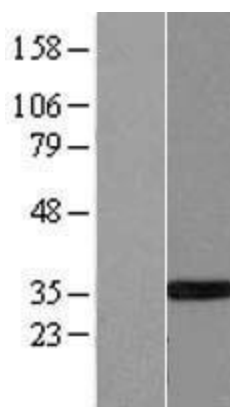
MW: 32.1 kDa

Gene Summary: This gene encodes a protein involved in the cellular response to cisplatin, a drug commonly used in chemotherapy. The protein encoded by this gene contains two motifs: a motif found in RAD52, a protein that functions in DNA double-strand breaks and homologous recombination, and an RNA recognition motif (RRM) that is not found in RAD52. The RAD52 motif region in RAD52 is important for protein function and may be involved in DNA binding or oligomerization. Alternatively spliced transcript variants encoding different isoforms have been reported. [provided by RefSeq, Jul 2008]

Product images:



Circular map for RC217647



Western blot validation of overexpression lysate (Cat# [LY407910]) using anti-DDK antibody (Cat# [TA50011-100]). Left: Cell lysates from untransfected HEK293T cells; Right: Cell lysates from HEK293T cells transfected with RC217647 using transfection reagent MegaTran 2.0 (Cat# [TT210002]).