

## Product datasheet for **RC217646**

### IRF8 (NM\_002163) Human Tagged ORF Clone

#### Product data:

Product Type:	Expression Plasmids
Product Name:	IRF8 (NM_002163) Human Tagged ORF Clone
Tag:	Myc-DDK
Symbol:	IRF8
Synonyms:	H-ICSBP; ICSBP; ICSBP1; IMD32A; IMD32B; IRF-8
Mammalian Cell Selection:	Neomycin
Vector:	pCMV6-Entry (PS100001)
E. coli Selection:	Kanamycin (25 ug/mL)



[View online »](#)

ORF Nucleotide  
Sequence:

>RC217646 ORF sequence  
Red=Cloning site Blue=ORF Green=Tags(s)

TTTTGTAATACGACTCACTATAGGGCGGCCGGAATTCGTCGACTGGATCCGGTACCGAGGAGATCTGCC  
GCCGCGATCGCC

ATGTGTGACCGGAATGGTGGTCGGCGGCTTCGACAGTGGCTGATCGAGCAGATTGACAGTAGCATGTATC  
CAGGACTGATTTGGGAGAATGAGGAGAAGAGCATGTTCCGGATCCCTTGGAAACACGCTGGCAAGCAAGA  
TTATAATCAGGAAGTGGATGCCTCCATTTTTAAGGCCTGGCAGTTTTTAAAGGGAAGTTTAAAGAAGGG  
GACAAAGCTGAACCAGCCACTTGAAGACGAGGTTACGCTGTGCTTTGAATAAGAGCCCAGATTTTGAGG  
AAGTGACGGACCGGTCCCAACTGGACATTTCCGAGCCATACAAAGTTTACCGAATTGTTCTGAGGAAGA  
GCAAAAATGCAAACTAGGCGTGGCAACTGCTGGCTGCGTGAATGAAGTTACAGAGATGGAGTGCGGTGCG  
TCTGAAATCGACGAGCTGATCAAGGAGCCTTCTGTGGACGATTACATGGGGATGATCAAAAGGAGCCCTT  
CCCCGCCGAGGCTGTCCGAGTCACTCCTCCAGACTGGTGGGCGCAGCAGCCAGCACAGGCGTGCC  
GCTGGTGACGGGTACACCACCTACGACGCGCACCATTACGATTCTCCAGATGGTGATCAGCTTCTAC  
TATGGGGCAAGCTGGTGGGCCAGGCCACCACCCTGCCCGAGGGCTGCCGCCTGTCCCTGAGCCAGC  
CTGGGCTGCCCGCACCAAGCTGTATGGGCCGAGGGCCTGGAGCTGGTGCCTTCCCGCCGCGCCAGCG  
CATCCCCAGCGAGCGACAGAGGCAGGTGACGCGGAAGCTGTTCCGGCACCTGGAGCGCGGGGTGCTGCTG  
CACAGCAGCCGGCAGGGCGTGTTCGTCGCAAGCGGCTGTGCCAGGGCCGCGTGTCTGCAGCGGCAACGCCG  
TGGTGTGCAAAGGCAGGCCAACAAAGCTGGAGCGTGATGAGGTGGTCCAGGTCTTCGACACCAGCCAGTT  
CTTCCGAGAGTGCAGCAGTTCTATAACAGCCAGGGCCGCTTCTGACGGCAGGGTGGTGTGTGCTTT  
GGGGAAGAGTTTCCGGATATGGCCCCCTTGCCTCCAACTCATTCTCGTGCAGATTGAGCAGCTGTATG  
TCCGGCAACTGGCAGAAGAGGCTGGGAAGAGCTGTGGAGCCGGCTCTGTGATGCAGGCCCCCGAGGAGCC  
GCCGCCAGACCAGGTCTCCGGATGTTCCAGATATTTGTGCCTCACACCAGAGATCATTTTTAGAGAA  
AACCAACAGATCACCGTC

ACGCGTACGCGGCCGCTCGAGCAGAACTCATCTCAGAAGAGGATCTGGCAGCAAATGATATCCTGGATT  
ACAAGGATGACGACGATAAGGTTTAA

## Protein Sequence:

>RC217646 protein sequence  
Red=Cloning site Green=Tags(s)

MCDRNGRRLRQWLIEQIDSSMYPGLIWENEEKSMFRIPWKHAGKQDYNQEVDAIFKAWAVFKGKFKEG  
DKAEPATWKTRLRCALNKSPDFEEVTDRLDISEPYKVYRIVPEEEQKCKLGVATAGCVNEVTEMECGR  
SEIDELIKEPSVDDYMGMIKRSPPEACRSQLLPDWWAQQPSTGVPLVTGYTTYDAHHSFASQMVISFY  
YGGKLVGQATTTCPGCRLLSLQPGLPGTKLYGPEGLELVRFPADAIPSERQRQVTRKLFHGLERGVLL  
HSSRQGVFVKRLCQGRVFCSGNAVVCGRPNKLERDEVVQVFDTSQFFRELQQFYNSQGRLPDGRVVLCF  
GEEFPDMAPLRSLILVQIEQLYVRQLAEEAGKSCGAGSVMQAPEPPDQVFRMFPDICASHQRSFFRE  
NQQITV

TRTRPLEQKLISEEDLAANDILDYKDDDDKV

## Chromatograms:

[https://cdn.origene.com/chromatograms/mk6466\\_d12.zip](https://cdn.origene.com/chromatograms/mk6466_d12.zip)

## Restriction Sites:

SgfI-MluI

**Cloning Scheme:**


**ACCN:** NM\_002163

**ORF Size:** 1278 bp

**OTI Disclaimer:** The molecular sequence of this clone aligns with the gene accession number as a point of reference only. However, individual transcript sequences of the same gene can differ through naturally occurring variations (e.g. polymorphisms), each with its own valid existence. This clone is substantially in agreement with the reference, but a complete review of all prevailing variants is recommended prior to use. [More info](#)

**OTI Annotation:** This clone was engineered to express the complete ORF with an expression tag. Expression varies depending on the nature of the gene.

**Components:** The ORF clone is ion-exchange column purified and shipped in a 2D barcoded Matrix tube containing 10ug of transfection-ready, dried plasmid DNA (reconstitute with 100 ul of water).

**Reconstitution Method:**

1. Centrifuge at 5,000xg for 5min.
2. Carefully open the tube and add 100ul of sterile water to dissolve the DNA.
3. Close the tube and incubate for 10 minutes at room temperature.
4. Briefly vortex the tube and then do a quick spin (less than 5000xg) to concentrate the liquid at the bottom.
5. Store the suspended plasmid at -20°C. The DNA is stable for at least one year from date of shipping when stored at -20°C.

**Note:** Plasmids are not sterile. For experiments where strict sterility is required, filtration with 0.22um filter is required.

**RefSeq:** [NM\\_002163.4](#)

**RefSeq Size:** 2678 bp

**RefSeq ORF:** 1281 bp

**Locus ID:** 3394

UniProt ID: [Q02556](#)

Cytogenetics: 16q24.1

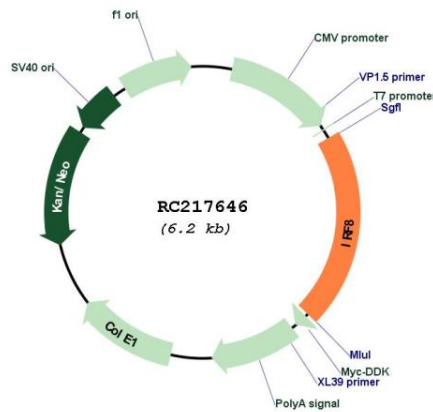
Domains: IRF

Protein Families: Transcription Factors

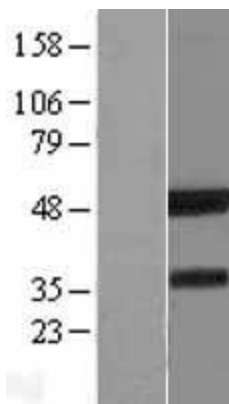
MW: 48.4 kDa

**Gene Summary:** Interferon consensus sequence-binding protein (ICSBP) is a transcription factor of the interferon (IFN) regulatory factor (IRF) family. Proteins of this family are composed of a conserved DNA-binding domain in the N-terminal region and a divergent C-terminal region that serves as the regulatory domain. The IRF family proteins bind to the IFN-stimulated response element (ISRE) and regulate expression of genes stimulated by type I IFNs, namely IFN-alpha and IFN-beta. IRF family proteins also control expression of IFN-alpha and IFN-beta-regulated genes that are induced by viral infection. [provided by RefSeq, Jul 2008]

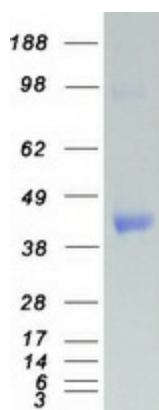
### Product images:



Circular map for RC217646



Western blot validation of overexpression lysate (Cat# [LY419485]) using anti-DDK antibody (Cat# [TA50011-100]). Left: Cell lysates from untransfected HEK293T cells; Right: Cell lysates from HEK293T cells transfected with RC217646 using transfection reagent MegaTran 2.0 (Cat# [TT210002]).



Coomassie blue staining of purified IRF8 protein (Cat# [TP317646]). The protein was produced from HEK293T cells transfected with IRF8 cDNA clone (Cat# RC217646) using MegaTran 2.0 (Cat# [TT210002]).