

Product datasheet for RC217642

SYTL2 (NM_206928) Human Tagged ORF Clone

Product data:

Product Type:	Expression Plasmids
Product Name:	SYTL2 (NM_206928) Human Tagged ORF Clone
Tag:	Myc-DDK
Symbol:	SYTL2
Synonyms:	CHR11SYT; EXO4; PPP1R151; SGA72M; SLP2; SLP2A
Vector:	pCMV6-Entry (PS100001)
E. coli Selection:	Kanamycin (25 ug/mL)
Cell Selection:	Neomycin
ORF Nucleotide Sequence:	>RC217642 representing NM_206928 Red=Cloning site Blue=ORF Green=Tags(s)

TTTTGTAATACGACTCACTATAGGGCGCCGGGAATTCGTCGACTGGATCCGGTACCGAGGAGATCTGCC
GCC**CGATCGCC**

ATGGATGAACCCAATGCAGAACAGGTCTATAATCCCTCTCAGTTTGAGAATTTGAGAAAGTTTTGGGACT
TAGAAGCTAATCAAACAGTAAGGATAATGACAAGAATATTACCACCACAAGCCAAAAAATTTCTGCACC
TTTTAATAGGCAGAAACACAAGGAATTCAGCGACATTAATATCAGGTAATAATACCCATGAAGCAGAG
GTGCTTCTAAGCCAAAAAAGTTATGGCAAGAGAGGAAATGGAGAAATTAATTCAAAGGCATCTCC
AGGTGCTACCAGATGAAATCACATTTCTTTGAGTCCACTTAGAAAGTATACTTATCAGTTGCCAGGAAA
TGAGTCATCAAAGGAAAAATGTGGAAAAGAATACGGAAGGGATTGTTACTCCAGTGTTTAAGGAAGAAAAAG
GATTACTCAGAACAAGAGATTCAAGAAATCCATAATAAAAAACCAATGTTTTGTCTAAAGACTGCAAAGACA
CTTTAATGACAGCTTGCAGAACTGCTTTCAGAAACCTCAACACCAGCAATTCACCCTCTGGTGGAAA
AGTTCATGGAAAACAAGTCTTGAACCAAGTGTCTGAAAATAGGACATGGCCTCAAAAAACAGATTTT
GCTGATACTGAGGAAGAAGTCAAAGGACCTGAGAAGATCATTAAATGAGCATGTTGACAAAACAGTAGTTC
ATCCAAAGGTTAAACGGAACCTTTGACTGCTAGTCTAGACAAACTCTGAAGGAAGCAACTGGAACCTC
ACCCTCTCCCTTGCAAGCCAAGTTGGCGCTGTTATCACTGGAACCAACTCTAAGCTGGAAGAGGGGAGA
TTTTTTGGAAAAGGGATAGAACAGAGTCAAACTTTCAGCTGATAAGAGAGAAATACTAGCTCCTTTTTC
CAGTGAGAGATGAACTTTTGGAAATACAGCTCTCCTCAAGAAAGCTGAAAGTGGTGAAGTCCAGCTAAG
CACACAGAATTTGATTAGATGGCTGCAGAAAGATTCTCATCCATTGGATCCAACCTCCCAGCTTTCCAGA
AAGGTTCTTTTGGGGATGTGGCCAGCCCTCCCAAGATATGCTTTTTCCCAGGATGCTCATCTTGTTCC
CCCAGGCTAGGTTACACCCTTCAAACGGAAATTTCCGAGACTGTAGAGAAAGTCACTTCCACCCAG
ACCTGTATTGAATGATGTAAGTGTGCATTACAGAAGCTGTGTGGAAGTATGGTTAAGTTATCCAGCT
GGAAGGGAAGTAGTCTGGAGAAGTGAACCCAGAATTTCTGAAGCAGTACAGCCAGTATGTAGCCCC
TAAATCTCCAGGAGTGATATCACCATGGCTACGATGGACACCATAGTTCCAGACAGGAAGGATTTTAA
TTCTCCAATGTAGTTCCTGATAAACTCATGAAGTTGGATCTTATTTAGCTGCCAAATGTCTCCATCA
GACCAGACGCTTAGCTCATTGCTTCCATTGTTGCTCAATATGGCAAAGGCCCTCCCTCAGGAAGTGGAAAG



[View online »](#)

AAATTGTGAGGGAAACAATTGTTCAACCCAAATCAGAGTTCCTCGAATTCAGTGCTGGCTTAGAAAACT
ACTGAAGGAAGAACTGAAACCTTCCCCTCAAAATATGAAAGTGATACAGGGAATCTTTCTCCATCAAAG
TTAATAGGTAGTACAGAGGAGCCAGGCCAGCCACTTCTGAATGCCATCCTGAGGAATTAAGAAACAG
TAGAAAAGGCCGAGGCTCCGTTAATAACTGAGAGTGCTTTTGATGCTGGTTTTGAGAACTTCTTAAGA
AATAACTGAAGCTCCTCCTTATCAGCCCCAGGTGTCAGTGAGAGAAGAACTCACGAGAAGGAGTCCCTCA
CAGTCAGAGCAGACCAGTTCTTGGGGACAGTGCCTTTTACAGGGCAGCCTCACAGACCTCTGAAA
TGAAGGATAAAAAGTAATGGTTTTGAATCTCAAGTCAACCAATGTGATAAAATGTTGGGAGGAGACGCAT
TGTGACTGATTTATTGGTAGATTTTTGTGGTTCCAGAAGTGGAGTTGAGATCCCTAGAACCCACAACCT
TATGTGGCTCATGAAATAGGGACCATTAACCTGTAACCCCCAGAGGACAGGGACAGTAAAAGTGGGG
TTGCAGGGGGACAAGGGACTCTTCAGGAACCTGGCTTTGGAGAGGCTTCTGAAGCAATTAGTGTGCCAG
AAATAGGCAACCCATTCTCCTGATGAACAAAGAAAACCTACAAAAACAAGTAAAGTTGAATTGACT
CTAGCATCGCCATATATGAAACAAGAGAAAAGGAAAGAAAAGAGTTTCTCTGAGTCTGATTTTTCAG
ATGGAAACACCAGTTCTAATGCAGAGAGCTGGAGAAATCCTTCCAGTTCAGAAGAAGAACCCAGTCTGT
TTTGAAAACCTTTGAAAGGAGTCCGCTAGGAAAATGCCTTCCAAAAGTCTAGAAGACATTTTCATCAGAT
TCATCAAATCAAGCAAAAGTAGATAATCAGCCAGAAGAATTAGTGCCTAGTGTGAAGATGTTTCCACAG
TGCTTACACAACCTGATAATCCATTTTCTACCCTGACAAACTCAAAGGATGAGCAAGTCTGTTCCAGC
ATTTCTCAAGATGAGAGTGATGACAGAGAAAACAGATACAGCATCAGAAAAGCAGTTACCAGCTCAGCAGA
CACAAGAAGAGCCGAGCTCTTTAACCAATCTTAGCAGCTCCTCTGGCATGACGTCTTGTCTTCTGTGA
GTGGCAGTGTGATGAGTGTATAGTGGAGACTTTGGCAATCTGGAAGTTAAAGGAAATATTAGTTTGC
AATTGAATATGTGGAGTCACTGAAGGAGTTGCATGTTTTGTGGCCAGTGAAGGACTTAGCAGCAGCG
GATGTAAAAAACAGCGTTCAGACCCATATGTAAGGCCATTTGCTACCAGACAAGGCAAAATGGGCA
AGAAGAAAACACTCGTAGTGAAGAAAACCTTGAATCCTGTGATAACGAAATACTGCGGTATAAAATTGA
AAAACAAATCTTAAAGACACAGAAATGAACCTGTCCATTTGGCATCGGGATACATTTAAGCGCAATAGT
TTCTAGGGGAGTGGAACCTTGATTTGAAACATGGGACTGGGATAACAACAGAATAAACAATTGAGAT
GGTACCCTCTGAAGCGGAAGACAGCACCAGTTGCCCTGAAGCAGAAAACAGAGGTGAAATGAAACTAGC
TCTCCAGTATGTCCAGAGCCAGTCCCTGGTAAAAAGCTTCTACAACCTGGAGAAGTGCACATCTGGGTG
AAGGAATGCCTTGATCTACCACTGCTAAGGGGAAGTCACTAAATCTTTTGTAAATGTACCATCCTTC
CAGATACAAGTAGGAAAAGTCGCCAGAAGACAAGAGCTGTAGGGAAAACCAACCCATCTTCAACCA
CACTATGGTGTATGATGGGTTCCAGGCTGAAGATCTGATGGAAGCCTGTGTAGAGCTTACTGTCTGGGAC
CATTACAATTAACCAACCAATTTTGGGAGGTCTTCGATTGGCTTTGGAACAGGTAAGGTTATGGGA
CTGAAGTGGACTGGATGGACTCTACTTCAGAGGAAGTTGCTCTCTGGGAGAAGATGGTAACTCCCCAA
TACTTGGATTGAAGCAACACTGCCTCTCAGAATGCTTTTGATTGCCAAGATTTCCAAA

ACGCGTACGCGGCCGCTCGAGCAGAACTCATCTCAGAAGAGGATCTGGCAGCAAATGATATCCTGGATT
ACAAGGATGACGACGATAAGGTTTAA

Protein Sequence: >RC217642 representing NM_206928
 Red=Cloning site Green=Tags(s)

```
MDEPNAEQVYNPSQFENLRKFWDLANSNSKDNDKNITTTTSQKNSAPFNQKHKEFSDIKLSGKNTHEAE
VLLSPKKVMAREMEKLNKGILQVLPDEITFPLSPLRKYTYQLPGNESSKENVEKNTGIVTPVFKEEK
DYSEQEIQESI IKTNL SKDCKDTFNDSLQKLLSETSTPAIQPSGGKVHGKQVLEPVSSENRTWPQKTD
ADTEEEVKGPEK I INEHVDKTVVHPKVKRNSLTASLDKLLKEATGTSPSPQLQAKLAPVITGTNSKLEEG
RFFGKGIEQSHNTSADKREILAPFPVRDETFGNTALLKKAESGECQLSTQNL IQMAAEDSHPLDPTSQLSR
KGSFGDVASPPQDMLFPQDAHLVPQARVHPSQTEISETVEKVILPPRPVLDVSAALQKLCGEVWLSYPA
GREVGPGEVNPFEPAVQPVCSPLNPPGVISPWATMDTIVPDRKDFYSSNVVDPDKTHEVGSYLAQMSPS
DQTLSSFASIVAQYKGLPQEEVIEVRETIVQPKSEFLEFSAGLEKLLKEETETFP SKYESDTGNLSPSK
LIGSTEEPRRATSECHPEELKETVEKAEAPLITESAFDAGFEKLLKEITEAPPYQPVSVREETHEKES
SQSEQTRFLGTVPHFYRAASQTSSEMKDKSNGLESQVNQCDKMLGGDALVTDLLVDFCGSRSGVEIPRTPQL
YVAHEIGTIKTVTPPEDRDESGVAGGQGTLPQEPGFGEASEAISVSRNRQPIPLL MNKENSTKTSKVELT
LASPYMKQEKKEEKEGFSESDFSGNTSSNAESWRNPSSEEEESPVLKTLERSAARKMPKSKLEDISSD
SSNQAKVDNQPEELVRS AEDVSTVPTQPDNPF SHPDKLRMSKSVPAFLQDESDRETDTASESSYQLSR
HKKSPSSLTNLSSSSGMSLSSVSGSVMSYSGDFGNLEVKGNIQFAIEYVESL KKLHVFAQCKDLAAA
DVYKQRSDPYVKAYLLPDKGKMGKKKTLVVKTLNPNVYNEILRYKIEKQLKTKLNL SIWHRDTFKRNS
FLGEVELDLETWWDNKQNKQLRWYPLKRKTAPVALEAENRGMKALQYVPEPVP GKKLPTTGEVHIWV
KECLDLP LLRGS HLNSFVKCTILPDTSRKSRQKTRAVGKTTNPIFNHTMVDGFRPEDLMEACVELTVWD
HYKLTNQFLGGLRIGFGTGKSYGTEVDWMDSTSEEVALWEKMNPSNTWIEATLPLRMLLIAKISK
```

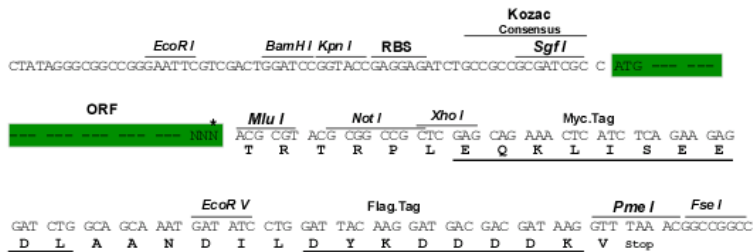
TRTRPLEQKLISEEDLAANDILDYKDDDDKV

Restriction Sites:

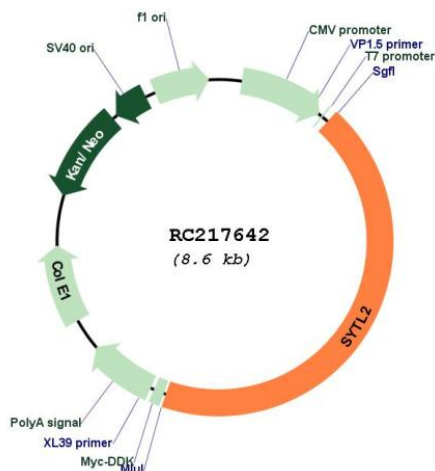
Sgfl-MluI

Cloning Scheme:

Cloning sites used for ORF Shutting:



* The last codon before the Stop codon of the ORF

Plasmid Map:


ACCN: NM_206928

ORF Size: 3768 bp

OTI Disclaimer: The molecular sequence of this clone aligns with the gene accession number as a point of reference only. However, individual transcript sequences of the same gene can differ through naturally occurring variations (e.g. polymorphisms), each with its own valid existence. This clone is substantially in agreement with the reference, but a complete review of all prevailing variants is recommended prior to use. [More info](#)

OTI Annotation: This clone was engineered to express the complete ORF with an expression tag. Expression varies depending on the nature of the gene.

Components: The ORF clone is ion-exchange column purified and shipped in a 2D barcoded Matrix tube containing 10ug of transfection-ready, dried plasmid DNA (reconstitute with 100 ul of water).

Reconstitution Method:

1. Centrifuge at 5,000xg for 5min.
2. Carefully open the tube and add 100ul of sterile water to dissolve the DNA.
3. Close the tube and incubate for 10 minutes at room temperature.
4. Briefly vortex the tube and then do a quick spin (less than 5000xg) to concentrate the liquid at the bottom.
5. Store the suspended plasmid at -20°C. The DNA is stable for at least one year from date of shipping when stored at -20°C.

RefSeq: [NM_206928.2](#), [NP_996811.1](#)

RefSeq Size: 4759 bp

RefSeq ORF: 6669 bp

Locus ID: 54843

Cytogenetics: 11q14.1

MW: 139.9 kDa

Gene Summary: The protein encoded by this gene is a synaptotagmin-like protein (SLP) that belongs to a C2 domain-containing protein family. The SLP homology domain (SHD) of this protein has been shown to specifically bind the GTP-bound form of Ras-related protein Rab-27A (RAB27A). This protein plays a role in RAB27A-dependent vesicle trafficking and controls melanosome distribution in the cell periphery. Alternative splicing results in multiple transcript variants encoding distinct isoforms.[provided by RefSeq, Jun 2009]