

Product datasheet for **RC217641**

ING1 (NM_005537) Human Tagged ORF Clone

Product data:

Product Type:	Expression Plasmids
Product Name:	ING1 (NM_005537) Human Tagged ORF Clone
Tag:	Myc-DDK
Symbol:	ING1
Synonyms:	p24ING1c; p33; p33ING1; p33ING1b; p47; p47ING1a
Mammalian Cell Selection:	Neomycin
Vector:	pCMV6-Entry (PS100001)
E. coli Selection:	Kanamycin (25 ug/mL)



[View online »](#)

ORF Nucleotide Sequence:

>RC217641 representing NM_005537
 Red=Cloning site Blue=ORF Green=Tags(s)

TTTTGTAATACGACTCACTATAGGGCGGCCGGAATTCGTCGACTGGATCCGGTACCGAGGAGATCTGCC
 GCC**CGGATCGCC**

ATGTCCTTCGTGGAATGTCTTATCATTCCCTGCGGAACGATTGGTCGCTGAGCGGATGAAGCGGGC
 CTAGCGCAATAACTGGTATGGGTCTGTGTTCCGCTGTCTCTTTTTCTTTTTTCGGGGAGGAGCGGGT
 GGAGGGTGGACGAGTTGATTTGAACGTCTTCGGGTCGCTCGGCCTCCAGCCTTGATTGGTTCTTCTCGC
 TGCTGGGGCGGGCGTCTTCCGCCCTGCGGTGTGGTTGGTTCTCTCCTGGCCTCCGCCCTCCAAAT
 CGGCGATTCCCATAGGCGCGGCTCTCGGGGTGCGGGGCGAGTCTCCCGTGGCCTCCTCCCATTTGGT
 GGAGGCCCTGGCGGGTGTGCCCTGCCCTCTCCCGCTCAGCCCGGCCACTTTCGGGCGCGGATTATA
 GCAGTAGCAGTATCCCGGCCGTGGGCTCGGGGCGGGGCTGCAGTTCGGACCGCCTCCCGGACCCG
 CGGGCCCGGCTCGGAGACAGTTTCAGGCCGCATCTCTGCTGACCCGAGGGTGGGGCCGCGTGGCCGTG
 GAAACAGATCCTGAAGGAGCTAGACGAGTGTACGAGCGCTTCAGTCGCGAGACAGACGGGGCGCAGAAG
 CGGCGGATGCTGCACTGTGTGCAGCGCGCGCTGATCCCGAGCCAGGAGCTGGGCGACGAGAAGATCCAGA
 TCGTGAGCCAGATGGTGGAGCTGGTGGAGAACCACGCGGCAGGTGGACAGCCAGTGGAGCTGTTCTGA
 GGCGCAGCAGGAGCTGGGCGACACAGCGGGCAACAGCGCAAGGCTGGCGCGACAGGCCAAAGGGCAG
 GCGGCAGCGCAGGCTGACAAGCCCAACAGCAAGCGCTCACGGCGGAGCGCAACAACGAGAACCCTGAGA
 ACGCGTCCAGCAACCACGACCACGACGAGCGCGCTCGGGCACACCAAGGAGAAGAAGGCCAAGACCTC
 CAAGAAGAAGAAGCGCTCCAAGGCCAAGGGGAGCGAGAGGCGTCCCCTGCCACCTCCCATCGACCC
 AACGAACCCACGTACTGTCTGTGCAACCAGTCTCCTATGGGGAGATGATCGGCTGCGACAACGACGAGT
 GCCCATCGAGTGGTTCCACTTCTCGTGGTGGGGCTCAATCATAAACCAGGGCAAGTGGTACTGTCC
 CAAGTCCCGGGGGAGAACGAGAAGACCATGGACAAAGCCCTGGAGAAATCCAAAAAGAGAGGGCTTAC
 AACAGG

AC**CGGCGCCG**TCGAGCAGAACTCATCTCAGAAGAGGATCTGGCAGCAAATGATATCCTGGA
 TTACAAGGATGACGACGATAAGGTTAA

Protein Sequence:

>RC217641 representing NM_005537
 Red=Cloning site Green=Tags(s)

MSFVECPYHSPAERLVAEADDEGGPSAITGMGLCFRCLLFSFSGRSGVEGGRVDLNVFGLGLQPWIGSSR
 CWGGPCSSALRCGWFSWPPPSKSAIPIGGGSRGAGRVSRWPPPHWLEAWRVSPPLSPLSPATFGRGFI
 AVAVIPGLWARGRGCSSDRLPRPAGPARRQFQAASLLTRGWRAWPWKQILKELDECYERFSRETGAQK
 RRMLHCVQRALIRSQELGDEKIQIVSQMVLENRTRQVDSHVELFEAQQELGDTAGNSGKAGADRPKGE
 AAAQADKPNKRSRRQRNRENENASSNHDDGASGTPKEKKAKTSKKKRSKAKAEREASPADLPIDP
 NEPTYCLCNQVSYGEMIGCDNDECEIWFHFSCVGLNHHKPKGKWCYCPKCRGENEKTMDKALEKSKKERAY
 NR

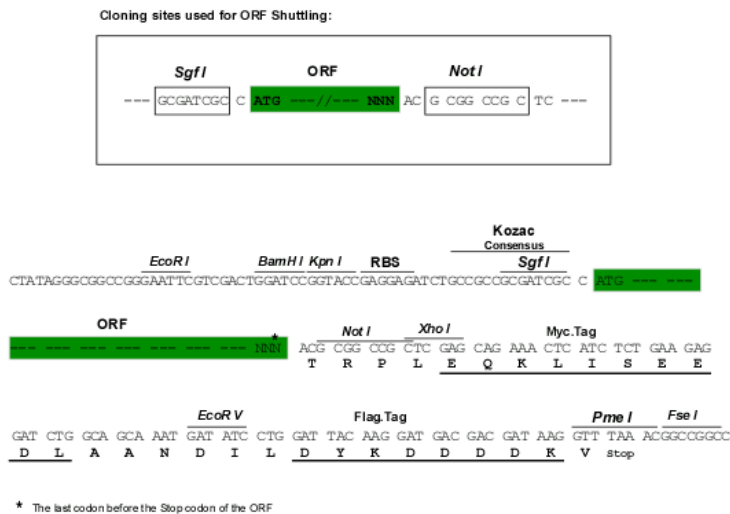
TRRLEQKLISEEDLAANDILDYKDDDDKV

Chromatograms:

https://cdn.origene.com/chromatograms/mk8058_g07.zip

Restriction Sites:

SgfI-NotI

Cloning Scheme:


ACCN: NM_005537

ORF Size: 1266 bp

OTI Disclaimer: The molecular sequence of this clone aligns with the gene accession number as a point of reference only. However, individual transcript sequences of the same gene can differ through naturally occurring variations (e.g. polymorphisms), each with its own valid existence. This clone is substantially in agreement with the reference, but a complete review of all prevailing variants is recommended prior to use. [More info](#)

OTI Annotation: This clone was engineered to express the complete ORF with an expression tag. Expression varies depending on the nature of the gene.

Components: The ORF clone is ion-exchange column purified and shipped in a 2D barcoded Matrix tube containing 10ug of transfection-ready, dried plasmid DNA (reconstitute with 100 ul of water).

Reconstitution Method:

1. Centrifuge at 5,000xg for 5min.
2. Carefully open the tube and add 100ul of sterile water to dissolve the DNA.
3. Close the tube and incubate for 10 minutes at room temperature.
4. Briefly vortex the tube and then do a quick spin (less than 5000xg) to concentrate the liquid at the bottom.
5. Store the suspended plasmid at -20°C. The DNA is stable for at least one year from date of shipping when stored at -20°C.

RefSeq: [NM_005537.4](#)

RefSeq Size: 2886 bp

RefSeq ORF: 1269 bp

Locus ID: 3621

UniProt ID: [Q9UK53](#)

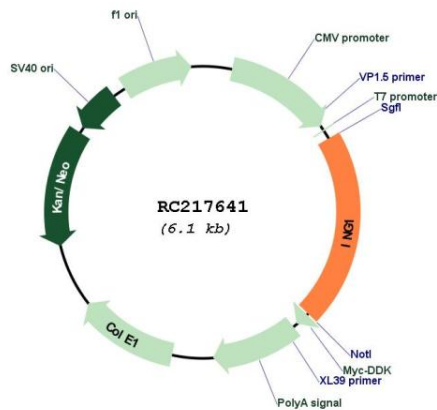
Cytogenetics: 13q34

Protein Families: Druggable Genome, Transcription Factors

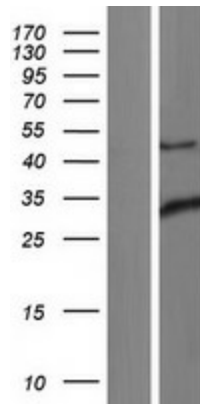
MW: 46.6 kDa

Gene Summary: This gene encodes a tumor suppressor protein that can induce cell growth arrest and apoptosis. The encoded protein is a nuclear protein that physically interacts with the tumor suppressor protein TP53 and is a component of the p53 signaling pathway. Reduced expression and rearrangement of this gene have been detected in various cancers. Multiple alternatively spliced transcript variants encoding distinct isoforms have been reported. [provided by RefSeq, Jul 2008]

Product images:



Circular map for RC217641



Western blot validation of overexpression lysate (Cat# [LY417242]) using anti-DDK antibody (Cat# [TA50011-100]). Left: Cell lysates from untransfected HEK293T cells; Right: Cell lysates from HEK293T cells transfected with RC217641 using transfection reagent MegaTran 2.0 (Cat# [TT210002]).