

Product datasheet for **RC217638**

OST beta (SLC51B) (NM_178859) Human Tagged ORF Clone

Product data:

Product Type:	Expression Plasmids
Product Name:	OST beta (SLC51B) (NM_178859) Human Tagged ORF Clone
Tag:	Myc-DDK
Symbol:	OST beta
Synonyms:	OSTB; OSTBETA
Mammalian Cell Selection:	Neomycin
Vector:	pCMV6-Entry (PS100001)
E. coli Selection:	Kanamycin (25 ug/mL)
ORF Nucleotide Sequence:	<p>>RC217638 ORF sequence</p> <p>Red=Cloning site Blue=ORF Green=Tags(s)</p>

TTTTGTAATACGACTCACTATAGGGCGGCCGGAATTCGTCGACTGGATCCGGTACCGAGGAGATCTGCC
GCC**CGATCGCC**

ATGGAGCACAGTGAGGGGCTCCCGAGACCCAGCCGGTACTGTGGTACCCAGGAGCTGCTGGAAGAGA
TGCTTTGGTTTTTCGTGTGGAAGATGCATCTCCCTGGAATCATTCCATCCTTGGCCTGGCAGCTGTGGT
GGTCATTATAAGCATGGTCCTCCTGGGAAGAAGCATCCAGGCAAGCAGAAAAGAAAAGATGCAGCCACCA
GAAAAAGAACTCCAGAAGTCTGCATTTGGATGAGGCCAAGGATCACACAGCCTAAACAACCTAAGAG
AACTTTGCTCTCAGAAAAGCCAACTTGGCCAGGTGGAACCTGAGTTAAAGAGAGAGATGTGCTGTC
AGTTTTCTTCCGGATGTACCAGAACTGAGAGC

ACGCGTACGCGGCCGCTCGAGCAGAACTCATCTCAGAAGAGGATCTGGCAGCAAATGATATCCTGGATT
ACAAGGATGACGACGATAAGGTTTAA

Protein Sequence:	<p>>RC217638 protein sequence</p> <p>Red=Cloning site Green=Tags(s)</p>
-------------------	--

MEHSEGAPGDPAGTVVPQELLEMLWFFRVEDASPNHSLALAAVVVVISMVLLGRSIIQASRKEKMQPP
EKETPEVLHLDEAKDHNSLNNLRETLLEKPNLAQVELELKERDVLVFLPDVPETES

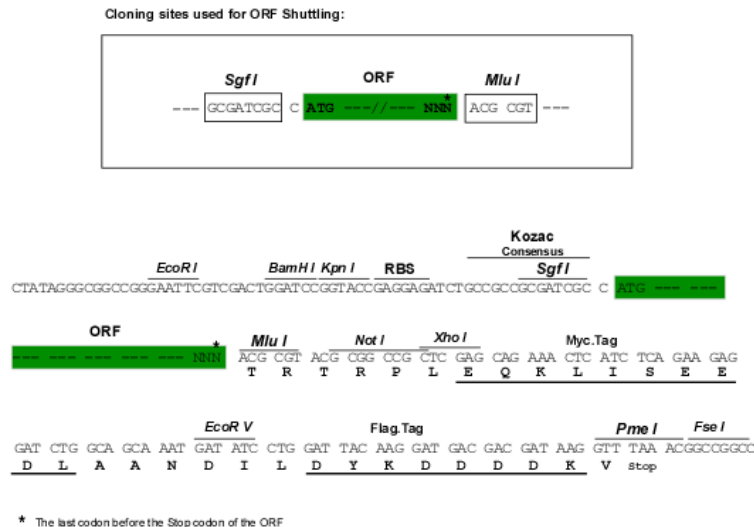
TRTRPLEQKLISEEDLAANDILDYKDDDDKV

Chromatograms: https://cdn.origene.com/chromatograms/mk6457_d10.zip

Restriction Sites: SgfI-MluI



[View online »](#)

Cloning Scheme:


ACCN: NM_178859

ORF Size: 384 bp

OTI Disclaimer: Due to the inherent nature of this plasmid, standard methods to replicate additional amounts of DNA in E. coli are highly likely to result in mutations and/or rearrangements. Therefore, OriGene does not guarantee the capability to replicate this plasmid DNA. Additional amounts of DNA can be purchased from OriGene with batch-specific, full-sequence verification at a reduced cost. Please contact our customer care team at custsupport@origene.com or by calling 301.340.3188 option 3 for pricing and delivery.

The molecular sequence of this clone aligns with the gene accession number as a point of reference only. However, individual transcript sequences of the same gene can differ through naturally occurring variations (e.g. polymorphisms), each with its own valid existence. This clone is substantially in agreement with the reference, but a complete review of all prevailing variants is recommended prior to use. [More info](#)

OTI Annotation: This clone was engineered to express the complete ORF with an expression tag. Expression varies depending on the nature of the gene.

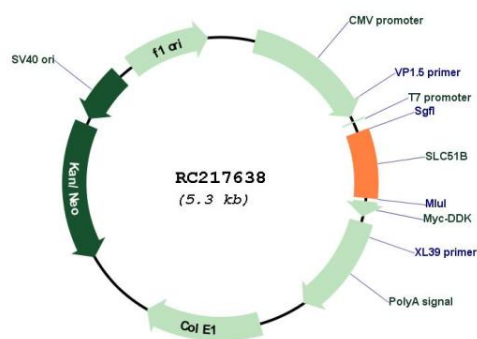
Components: The ORF clone is ion-exchange column purified and shipped in a 2D barcoded Matrix tube containing 10ug of transfection-ready, dried plasmid DNA (reconstitute with 100 ul of water).

Reconstitution Method:

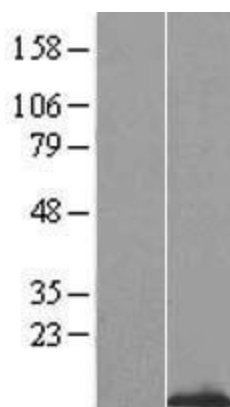
1. Centrifuge at 5,000xg for 5min.
2. Carefully open the tube and add 100ul of sterile water to dissolve the DNA.
3. Close the tube and incubate for 10 minutes at room temperature.
4. Briefly vortex the tube and then do a quick spin (less than 5000xg) to concentrate the liquid at the bottom.
5. Store the suspended plasmid at -20°C. The DNA is stable for at least one year from date of shipping when stored at -20°C.

Note:	Plasmids are not sterile. For experiments where strict sterility is required, filtration with 0.22um filter is required.
RefSeq:	<u>NM_178859.4</u>
RefSeq Size:	940 bp
RefSeq ORF:	387 bp
Locus ID:	123264
UniProt ID:	<u>Q86UW2</u>
Cytogenetics:	15q22.31
Protein Families:	Transmembrane
MW:	14.3 kDa
Gene Summary:	Essential component of the Ost-alpha/Ost-beta complex, a heterodimer that acts as the intestinal basolateral transporter responsible for bile acid export from enterocytes into portal blood. Efficiently transports the major species of bile acids. Modulates SLC51A glycosylation, membrane trafficking and stability activities.[UniProtKB/Swiss-Prot Function]

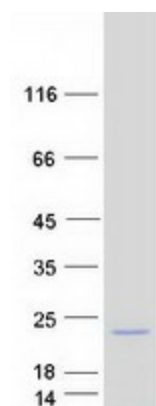
Product images:



Circular map for RC217638



Western blot validation of overexpression lysate (Cat# [LY405823]) using anti-DDK antibody (Cat# [TA50011-100]). Left: Cell lysates from untransfected HEK293T cells; Right: Cell lysates from HEK293T cells transfected with RC217638 using transfection reagent MegaTran 2.0 (Cat# [TT210002]).



Coomassie blue staining of purified SLC51B protein (Cat# [TP317638]). The protein was produced from HEK293T cells transfected with SLC51B cDNA clone (Cat# RC217638) using MegaTran 2.0 (Cat# [TT210002]).