

## Product datasheet for RC217633

### UPF2 (NM\_015542) Human Tagged ORF Clone

#### Product data:

Product Type:	Expression Plasmids
Product Name:	UPF2 (NM_015542) Human Tagged ORF Clone
Tag:	Myc-DDK
Symbol:	UPF2
Synonyms:	HUPF2; RENT2; smg-3
Mammalian Cell Selection:	Neomycin
Vector:	pCMV6-Entry (PS100001)
E. coli Selection:	Kanamycin (25 ug/mL)
ORF Nucleotide Sequence:	>RC217633 ORF sequence Red=Cloning site Blue=ORF Green=Tags(s)

TTTTGTAATACGACTCACTATAGGGCGGCCGGAATTCGTCGACTGGATCCGGTACCGAGGAGATCTGCC  
GCC**CGATCGCC**

ATGCCAGCTGAGCGTAAAAAGCCAGCAAGTATGGAAGAAAAAGACTCTTTACAAACAACAAGGAAAAAG  
ACTGCAGTGAAAGGCGGACAGTGAGCAGCAAGGAGAGGCCAAAAGACGATATCAAGCTCACTGCCAAGAA  
GGAGGTCAAGAGCCCTGAAGACAAGAAGAAGAGACTGGAAGATGATAAGAGAAAAAGGAAGACAAG  
GAACGCAAGAAAAAGACGAAGAAAAGTGAAGGCAGAGGAAGAATCAAAGAAAAAGAAGGAAGAAA  
AAAAGAAACATCAAGAGGAAGAGAGAAAAGAAGCAAGAAGAGCAGGCCAAACGTCAGCAAGAAGAAGC  
AGCTGCTCAGATGAAAGAAAAAGAAGAATCCATTAGCTTCATCAGGAAGCTTGGGAACGACATCATTTA  
AGAAAGGAACTTCGTAGCAAAAACAAAATGCTCCGGACAGCCGACCAGAGGAAAACCTTCTTCAGCCGCC  
TCGACTCAAGTTTGAAGAAAAACTGCTTTTGTCAAGAACTAAAACTATTACAGAACAACAGAGAGA  
CTCCTTGTCCCATGATTTAATGGCCTAAATTAAGCAAATACATTGCAGAAGCTGTAGCTTCCATCGTG  
GAAGCAAACTAAAACTCTGTATGTGAAGTGTGCTGTGCACCTCTGCTCTCTTTCCACAGCGTTATG  
CTGACTTTGCCCATCACTTCTCAGGTCTGAAAAACATTTTGAAGCAAGGAAAGAGGAGAAAACACC  
TAACATCACCAAGTTAAGAACTGATTTGCGTTTTATTGCAGAATTGACAATAGTTGGGATTTTCACTGAC  
AAGGAAGGTCTTTCCTTAATCTATGAACAGCTAAAAAATATTATTAATGCTGATCGGGAGTCCCACACTC  
ATGTCTCTGTAGTGATTAGTTTCTGTCGACATTGTGGAGATGATATTGCTGGACTGTACCAAGGAAAGT  
AAAGAGTGCTGCAGAGAAGTTAATTTAGTTTTCTCCTAGTGAGATAATTAGTCCAGAGAAAACAACAG  
CCCTTCCAGAATCTTTAAAAGAGTACTTTACGCTTTTGACCAAACACTGAAAAGGGACCACAGGGAGC  
TCCAGAATACTGAGAGACAAAACAGGCGCATTCTACATTCTAAAGGGAGCTCAGTGAAGATAGACATAA  
ACAGTATGAGGAATTTGCTATGTCTTACCAGAAGCTGCTGGCAAATCTCAATCCTTAGCAGACCTTTTG  
GATGAAAATATGCCAGATCTTCTCAAGACAAACCAACCAGAGAACAATGGGCTGGAATTTGATATAT  
TCACACCTGGTAAACCTGGAGAATATGACTTGGAAAGTGGTATATGGGAAGATGAAGATGCTCGGAATTT  
TTATGAGAACCTCATTGATTTGAAGGCTTTTGTCCAGCCATCTGTTTAAAGACAATGAAAAAGTTGT



[View online »](#)

CAGAATAAAGAGTCCAACAAAGATGATACCAAAGAGGCCAAAAGAATCTAAGGAGAATAAGGAGGTATCAA  
 GTCCCGATGATTTGGAACCTTGAGTTGGAGAATCTAGAAATTAATGATGACACCTTAGAATTAGAGGGTGG  
 AGATGAAGCTGAAGATCTTACAAAGAACTTCTTGATGAACAAGAACAAGAAGATGAGGAAGCCAGCACT  
 GGATCTCATCTCAAGCTCATAGTAGATGCTTTCCTACAGCAGTTACCCAAGTGTCAACCGAGATCTGA  
 TAGACAAGGCAGCAATGGATTTTGCATGAACATGAACACAAAAGCAAACAGGAAGAAGTTGGTACGGGC  
 ACTCTTCATAGTTCCTAGACAAAAGTTGGATTTGCTACCATTTTATGCAAGATTGGTTGCTACATTGCAT  
 CCCTGCATGCTGATGTAGCAGAGGATCTTTGTTCCATGCTGAGGGGGGATTTTCAGATTTTCATGTACGGA  
 AAAAGGCCAGATCAATATTGAAACAAAAGAATAAAACTGTTTCGTTTTATAGGAGAATAACTAAGTTTAA  
 GATGTTACCAAAAAATGACACACTGCATTGTTTAAAGATGCTTCTGTGACTTCTCTCATCACCATATT  
 GAAATGGCATGCACCCTGCTGGAGACATGTGGACGGTTTCTTTTCAGATCTCCAGAATCTCACCTGAGGA  
 CCAGTGTACTTTTGGAGCAAATGATGAGAAAGAAGCAAGCAATGCATCTTGATGCGAGATACGTCACAAAT  
 GGTAGAGAATGCATATTACTACTGCAACCCACCTCCAGCTGAAAAACCGTGAAAAAGAAACGCTCCTCCT  
 CTCAGGAATATGTCGGAAACTTTTGTACAAGGATCTCTAAGGTTACCACCGAGAAGGTTTTGAGAC  
 AGATGCGAAAGCTGCCCTGGCAGGACCAAGAAGTAAAGACTATGTTATTTGTTGTATGATAAACATCTG  
 GAATGTGAAATATAATAGTATTCATTGTGTAGCCAACCTCTTAGCAGGACTAGTGTCTACCAAGAGGAT  
 GTTGGGATCCACGTTGTGGATGGAGTGTAGAAGATATTCGATTAGGAATGGAGGTTAATCAACCTAAAT  
 TTAATCAGAGGCCATCAGCAGTGCCAAGTTCCTTAGGAGAAGTTTACAATTACCGAATGGTGAATCAGC  
 TGTTATTTTTCAGAACTCTGTATTCTTTTACCTCATTGTTGTTAACTCTGATGGCTCTCCAAGTTCCCTG  
 GACCCACCTGAGCATCTTTTCAGAAATTAGACTCGTATGCACTATTCTGGACACATGTGGCCAGTACTTTG  
 ACAGAGGTTCCAGTAAACGAAAACCTTGATTGTTTCCTTGATATTTTTCAGCGTTATGTTTGGTGAAGAA  
 AAGTTTGGAGGTTTGGACAAAAGACCATCCATTTCTATTGATATAGATTACATGATCAGTGATACACTA  
 GAACTGCTAAGACCAAAGATCAAACCTCTGAATTCTCTGGAAGAATCCATCAGGCAGGTACAAGACTTGG  
 AACGAGAATTCTTAATAAAACTAGGCCTAGTAAATGACAAAGACTCAAAGATTCTATGACAGAAGGAGA  
 AAATCTTGAAGAGGATGAAGAAGAAGAAGGTTGGGGCTGAAACAGAAGAACAATCTGGAAATGAAAGT  
 GAAGTAAATGAGCCAGAAGAAGAGGAGGTTCTGATAATGATGATGATGAGGGAGAAGAAGAGGAGGAAG  
 AGAATACAGATTACCTTACAGATTCCAATAAGGAAAATGAAACCGATGAAGAGAATACTGAGGTAATGAT  
 TAAAGGCGGTGGACTTAAGCATGTACCTTGTGTAGAAGATGAGGACTTCATTCAAGCTCTGGATAAAATG  
 ATGCTAGAAAATCTACAGCAACGAAGTGGTGAATCTGTTAAAGTGCACCAACTAGATGTTGCCATTCCTT  
 TGCATCTCAAAGCCAGCTGAGGAAAGGGCCCCACTGGGAGGTGGGAAGGAGAGGCTGAGTCTGCAGA  
 CACAATGCCGTTTGTATGTTAACAAGAAAAGGCAATAAACAGCAGTTTAAAGATCCTTAATGTACCCATG  
 TCCTCTCAACTTGCTGCAATCACTGGAACCAGCAACAGGCAGAACAGAAGAGAGGATGAGAATGAAAA  
 AGCTCACACTAGATATCAATGAACGGCAAGAACAAGAAGATTATCAAGAATGTTGCAGTCTCTGCACA  
 GCGCCCAGCTCCAGCAAAACCAATCGTGAGAGGCGGCCTCGCTACCAACATCCGAAGGGAGCACCTAAT  
 GCAGATCTAATCTTAAAGACTGGTGGGAGGAGACGT

ACGCGTACGCGGCCGCTCGAGCAGAACTCATCTCAGAAGAGGATCTGGCAGCAAATGATATCCTGGATT  
 ACAAGGATGACGACGATAAGGTTTAA

Protein Sequence:

>RC217633 protein sequence  
 Red=Cloning site Green=Tags(s)

MPAERKKPASMEEKDSLNNKEKDCSERRTVSSKERPKDDIKL TAKKEVSKAPEDKKRLEDDKRRKEDK  
 ERKKKDEEKVKAEEEESKKKEEEEKHHQEEERKKQEEQAKRQEEEAQAQMKKEEESIQLHQEAWERHHL  
 RKELRSKNQNAPDSRPEENFFSRLDSSLKKNATFVKKLTITEQQRDSL SHDFNGLNLSKYIAEAVASIV  
 EAKLKISDVNCAVHLCSLFHQRYADFAPSLQVWKKHFEARKEEKT PNIITKLRTDLRFIAELTIVGIFTD  
 KEGLSLIYEQLKNIINADRESHTHVSVVISFCRHCDDIAGLVPRKVKSAAEKFNL SFPPSEIISPEKQQ  
 PFQNLKKEYFTSLTKHLKRDHRELQNTERQNRRLHSHKSELSEDRHKQYEEFAMSYQKLLANSQSLADLL  
 DENMPDLQDKPTPEEHGPGIDIFTPGKPGYDLEGGIWEDEDARNFYENLIDLKAFVPAILFKDNEKSC  
 QNKE SNKDDTKEAKESKENKEVSSPDDLELEENLEINDDTLELEGGDEAEDLTKLLDEQEQEDEEAST  
 GSHLKLIVDAFLQQLPNCVNRDLIDKAAMDFCMNMNTKANRKKLVRALFIVPRQRLDLLPFYARLVATLH  
 PCMSDVAEDLCSMLRGDFRFHVRKKDQINIETKNKTVRFIGELTKFKMFTKNDTLHCLKMLLSDFSHHHI  
 EMACTLLET CGRFLFRSPESHLRTSVLLEQMMRKKQAMHLDARYVTMVENAYYYCNPPEAKTVKKRPP  
 LQEYVRKLLYKDL SKVTTEKVL RQMRKLPWQDQEVKDYVICCMINIWNVKYNSIHCVANLLAGLVLYQED  
 VGIHVVDGVLEDIRLGMEVNPQKFNQRRISSAKFLGELYNYRMVESAVIFRTLYSFTSFGVNPDPGSPSSL  
 DPPEHLFRIRLVCTILDTCGQYFDRGSSKRKLD CFLVYFQRYVWVKSLSEVWTKDHPFPIIDIDYMI SDTL  
 ELLRPKIKL CNSLEESIRQVQDLEREFLLKGLVNDKDSKDSMTEGENLEEEDEEEEGGAETEEQSGNES  
 EVNEPEEEEGSDNDDDEGEEEEENTDYL TDSNKENETDEENTEVMIKGGGLKHVPCVEDEDFIQALDKM  
 MLENLQQRSGESVKVHQLDVAIPLHLKSQLRKGPPGGGEGEAEASDTPFVMLTRKGNKQQFKILNVPM  
 SSQLAANHWNQQAEQEERM RKKLTLDINERQE QEDYQEMQLSLAQRPA PANTNRERRRPRYQHPKGAPN  
 ADLIFKTGGRRR

TRTRPLEQKLISEEDLAANDILDYKDDDDKV

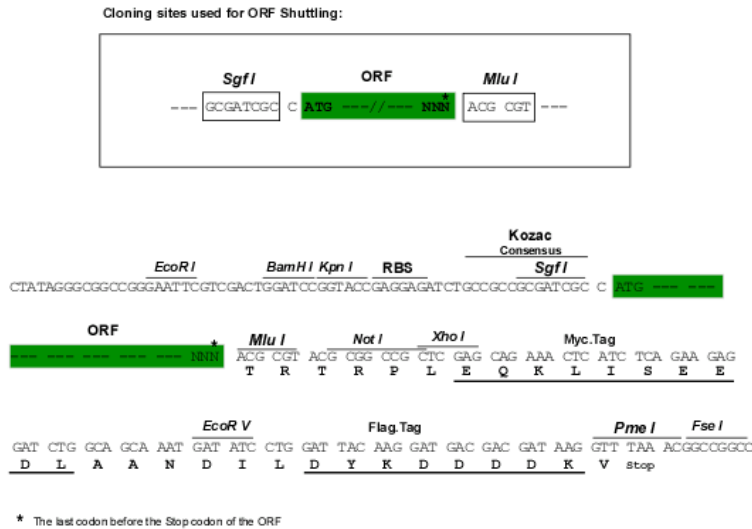
Chromatograms:

[https://cdn.origene.com/chromatograms/mk6678\\_c09.zip](https://cdn.origene.com/chromatograms/mk6678_c09.zip)

Restriction Sites:

SgfI-MluI

Cloning Scheme:



ACCN:

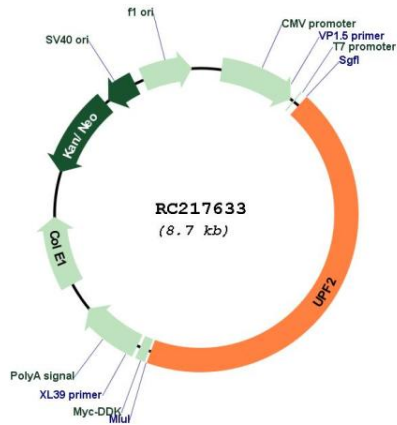
NM\_015542

ORF Size:

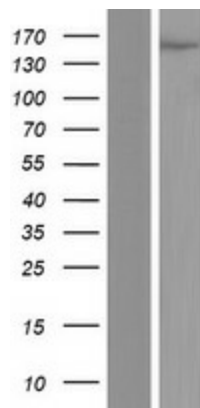
3816 bp

<b>OTI Disclaimer:</b>	The molecular sequence of this clone aligns with the gene accession number as a point of reference only. However, individual transcript sequences of the same gene can differ through naturally occurring variations (e.g. polymorphisms), each with its own valid existence. This clone is substantially in agreement with the reference, but a complete review of all prevailing variants is recommended prior to use. <a href="#">More info</a>
<b>OTI Annotation:</b>	This clone was engineered to express the complete ORF with an expression tag. Expression varies depending on the nature of the gene.
<b>Components:</b>	The ORF clone is ion-exchange column purified and shipped in a 2D barcoded Matrix tube containing 10ug of transfection-ready, dried plasmid DNA (reconstitute with 100 ul of water).
<b>Reconstitution Method:</b>	<ol style="list-style-type: none"><li>1. Centrifuge at 5,000xg for 5min.</li><li>2. Carefully open the tube and add 100ul of sterile water to dissolve the DNA.</li><li>3. Close the tube and incubate for 10 minutes at room temperature.</li><li>4. Briefly vortex the tube and then do a quick spin (less than 5000xg) to concentrate the liquid at the bottom.</li><li>5. Store the suspended plasmid at -20°C. The DNA is stable for at least one year from date of shipping when stored at -20°C.</li></ol>
<b>Note:</b>	Plasmids are not sterile. For experiments where strict sterility is required, filtration with 0.22um filter is required.
<b>RefSeq:</b>	<a href="#">NM_015542.4</a>
<b>RefSeq Size:</b>	5217 bp
<b>RefSeq ORF:</b>	3819 bp
<b>Locus ID:</b>	26019
<b>UniProt ID:</b>	<a href="#">Q9HAU5</a>
<b>Cytogenetics:</b>	10p14
<b>Domains:</b>	MIF4G, Upf2
<b>MW:</b>	147.8 kDa
<b>Gene Summary:</b>	This gene encodes a protein that is part of a post-splicing multiprotein complex involved in both mRNA nuclear export and mRNA surveillance. mRNA surveillance detects exported mRNAs with truncated open reading frames and initiates nonsense-mediated mRNA decay (NMD). When translation ends upstream from the last exon-exon junction, this triggers NMD to degrade mRNAs containing premature stop codons. This protein is located in the perinuclear area. It interacts with translation release factors and the proteins that are functional homologs of yeast Upf1p and Upf3p. Two splice variants have been found for this gene; both variants encode the same protein. [provided by RefSeq, Jul 2008]

Product images:



Circular map for RC217633



Western blot validation of overexpression lysate (Cat# [LY414488]) using anti-DDK antibody (Cat# [TA50011-100]). Left: Cell lysates from untransfected HEK293T cells; Right: Cell lysates from HEK293T cells transfected with RC217633 using transfection reagent MegaTran 2.0 (Cat# [TT210002]).