

Product datasheet for **RC217630**

RPL23A (NM_000984) Human Tagged ORF Clone

Product data:

Product Type: Expression Plasmids
Product Name: RPL23A (NM_000984) Human Tagged ORF Clone
Tag: Myc-DDK
Symbol: RPL23A
Synonyms: L23A; MDA20
Mammalian Cell Selection: Neomycin
Vector: pCMV6-Entry (PS100001)
E. coli Selection: Kanamycin (25 ug/mL)
ORF Nucleotide Sequence: >RC217630 representing NM_000984
Red=Cloning site Blue=ORF Green=Tags(s)

TTTTGTAATACGACTCACTATAGGGCGGCCGGAATTCGTCGACTGGATCCGGTACCGAGGAGATCTGCC
GCC**CGATCGCC**

ATGGCGCCGAAAGCGAAGAAGGAAGCTCCTGCCCTCCTAAAGCTGAAGCCAAAGCGAAGGCTTTAAAGG
CCAAGAAGGCAGTGTGAAAGGTGTCCACAGCCACAAAAGAAGAAGATCCGCACGTACCCACCTTCCG
GCGGCCGAAGACTGCGACTCCGGAGACAGCCAAATATCCTCGGAAGAGCGCTCCAGGAGAAACAAG
CTTGACCACTATGCTATCATCAAGTTCCGCTGACCACTGAGTCTGCCATGAAGAAGATAGAAGACAACA
ACACACTTGTGTTTCATTGTGGATGTTAAAGCCAACAAGCACCAGATTAACAGGCTGTGAAGAAGCTGTA
TGACATTGATGTGCCAAGGTCAACACCCTGATTCGGCCTGATGGAGAGAAGAAGGCATATGTTGACTG
GCTCCTGATTACGATGCTTTGGATGTTGCCAACAAAATTGGGATCATC

ACGCGTACGCGGCCGCTCGAGCAGAACTCATCTCAGAAGAGGATCTGGCAGCAAATGATATCCTGGATT
ACAAGGATGACGACGATAAGGTTTAA

Protein Sequence: >RC217630 representing NM_000984
Red=Cloning site Green=Tags(s)

MAPKAKKEAPAPPKAEAKAKALKAKKAVLKGVHSHKKKIRTSPTRRPKTLRLRRQPKYPRKSAPRRNK
LDHYAIKIFPLTTESAMKKIEDNNTLVFIVDVKANKHQIKQAVKLYDIDVAKVNTLIRPDGEKKAYVRL
APDYDALDVANKIGII

TRTRPLEQKLISEEDLAANDILDYKDDDDKV

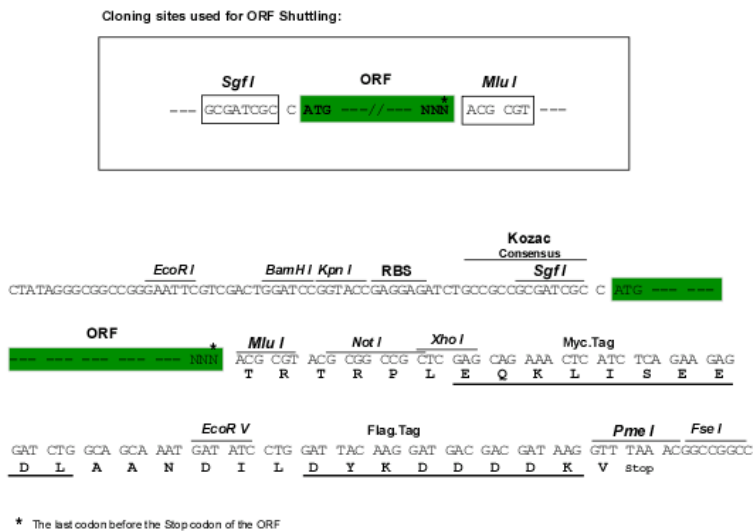
Chromatograms: https://cdn.origene.com/chromatograms/ja1452_b07.zip



[View online »](#)

Restriction Sites: SgfI-MluI

Cloning Scheme:



ACCN: NM_000984

ORF Size: 468 bp

OTI Disclaimer: The molecular sequence of this clone aligns with the gene accession number as a point of reference only. However, individual transcript sequences of the same gene can differ through naturally occurring variations (e.g. polymorphisms), each with its own valid existence. This clone is substantially in agreement with the reference, but a complete review of all prevailing variants is recommended prior to use. [More info](#)

OTI Annotation: This clone was engineered to express the complete ORF with an expression tag. Expression varies depending on the nature of the gene.

Components: The ORF clone is ion-exchange column purified and shipped in a 2D barcoded Matrix tube containing 10ug of transfection-ready, dried plasmid DNA (reconstitute with 100 ul of water).

Reconstitution Method:

1. Centrifuge at 5,000xg for 5min.
2. Carefully open the tube and add 100ul of sterile water to dissolve the DNA.
3. Close the tube and incubate for 10 minutes at room temperature.
4. Briefly vortex the tube and then do a quick spin (less than 5000xg) to concentrate the liquid at the bottom.
5. Store the suspended plasmid at -20°C. The DNA is stable for at least one year from date of shipping when stored at -20°C.

RefSeq: [NM_000984.6](#)

RefSeq Size: 1111 bp

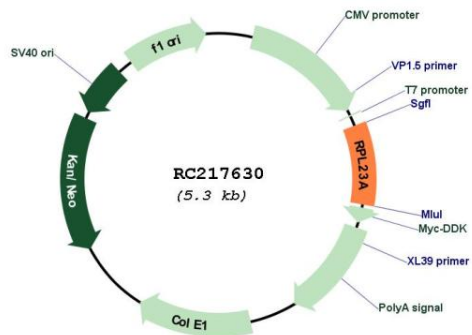
RefSeq ORF: 471 bp

Locus ID: 6147

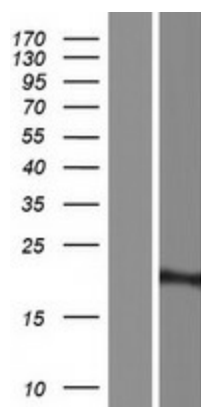
UniProt ID: [P62750](#)
Cytogenetics: 17q11.2
Domains: Ribosomal_L23, Ribosomal_L23eN
Protein Pathways: Ribosome
MW: 17.5 kDa

Gene Summary: Ribosomes, the organelles that catalyze protein synthesis, consist of a small 40S subunit and a large 60S subunit. Together these subunits are composed of 4 RNA species and approximately 80 structurally distinct proteins. This gene encodes a ribosomal protein that is a component of the 60S subunit. The protein belongs to the L23P family of ribosomal proteins. It is located in the cytoplasm. The protein may be one of the target molecules involved in mediating growth inhibition by interferon. In yeast, the corresponding protein binds to a specific site on the 26S rRNA. This gene is co-transcribed with the U42A, U42B, U101A, and U101B small nucleolar RNA genes, which are located in its third, first, second, and fourth introns, respectively. As is typical for genes encoding ribosomal proteins, there are multiple processed pseudogenes of this gene dispersed through the genome. [provided by RefSeq, Jul 2008]

Product images:



Circular map for RC217630



Western blot validation of overexpression lysate (Cat# [LY424414]) using anti-DDK antibody (Cat# [TA50011-100]). Left: Cell lysates from untransfected HEK293T cells; Right: Cell lysates from HEK293T cells transfected with RC217630 using transfection reagent MegaTran 2.0 (Cat# [TT210002]).