

## Product datasheet for **RC217628**

### **ARHGEF37 (NM\_001001669) Human Tagged ORF Clone**

#### **Product data:**

Product Type:	Expression Plasmids
Product Name:	ARHGEF37 (NM_001001669) Human Tagged ORF Clone
Tag:	Myc-DDK
Symbol:	ARHGEF37
Mammalian Cell Selection:	Neomycin
Vector:	pCMV6-Entry (PS100001)
E. coli Selection:	Kanamycin (25 ug/mL)



[View online »](#)

ORF Nucleotide  
Sequence:

>RC217628 representing NM\_001001669  
Red=Cloning site Blue=ORF Green=Tags(s)

TTTTGTAATACGACTCACTATAGGGCGGCCGGAATTCGTCGACTGGATCCGGTACCGAGGAGATCTGCC  
GCCGCGATCGCC

ATGGCCAAGCATGGAGCCGACGAGCCATCTCCAGGTCAGGGAGTCCGGACAGGGAAGGTAGGGCCTCTG  
AGGACAGATCGCTGCTTCATCAGAGGCTGGCTGTCCGGGAGCTCATCGACTGAGGTCTCTACTTGCA  
CATGCTCCAGCTCTGTGCCCTGTACATCAGGAGCCGCCTCCAGCAGTTGCCGCAGGGAGATCTGGATGTC  
CTGTTCTCAAACATTGATGATATCATCAAAGTGAACAGCAGATTCTCCATGATCTGCAGGAGACAGCCT  
CCAAGGAAGAGGAACAAGTGCAGCTAGTTGGTAACATATTTCTGGAATCCAAGAGGAGTTGGAGCAAGT  
CTATAAGGTCTACTGTGCCAGCTACGACCAGGCCCTTGCTACTGGTGGACACGTACCGGAAGGAGCCGGAG  
CTGCAGCGGCACATCCAGGGCATCGTTGAGGCGGTGGTCCGCAAGCTGGATCTTCAGGCCTCAGTTTCT  
TGCTGGTAATTCCTCTGCAGAGGATCACCAGGTACCCACTGCTGCTGCAGAAAATCCTGGAGAACACAGT  
CCCTGATGCCAGTGCCTATCCTGTCCTCAGAGGGCTGTCTGTCCTCCAGGACGTGAACACCAATATC  
AATGAGTACAAGATGCGCAAGGAAGTGGCTCCAAGTACACCAAGGTAGAGCAGCTGACCCCTCCGGGAGC  
GGCTGGCCCGCATCAACACACACACCCTCTCCAAGAAGACCACCCGGCTGAGCCAGCTGTGAAGCAGGA  
GGCGGGGCTGATCCCCAGGACAGAAGACAAGGAATTTGATGATTTAGAAGAGAGGTTCCAGTGGGTGCT  
CTGTGTGTGACTGAGCTGAAGAACAACGTGGCTGCTTACCTGGACAATCTGCAGGCTTTCCTCTACTTCA  
GGCCGCACGAATAACAATCTGGACATCCCCGAGGGGCTGCAGTGCAGTATTGCAATTTGGCAAGAGACCT  
TCACCTTGAGGCCTTCTGAAATTTAAGCAACGGCTAGAAGGCCCTGGTGTGGCAGCCACTGTGCAGCCTG  
GCCAAAGCCCTGCTTGGCCCTCAGAACCTGATCAAGAAGCGTCTGGACAAGCTACTGGACTTTGAGCGGG  
TGAAGAGAAGCTGCTGGAGGTGGCAGTGTGACCTACCAGGAGGAGCCGCCCGGCACACATACCAGGC  
ACTCAACTCGCTGCTAGTGGCTGAGCTCCACAGTTTAACCAGCTGGTCAATGCAGTGGCTGGCCAGATC  
ATGTGCACATTCTGTGACCCTCCAGAGGGACCTTGCAAAGCAAGTCTGCAGAGGGCAGAGGGAAGCATGG  
CCCAGTGCCCCACCACCAGTCCAGAGCCTGCCTTCAGGAAGCTGGTGGAGGACGCACTGGGCCGGAC  
GAGTAACCAGCTTCGCTCCTTTCAAGAGACCTTTGAGAAAGTGCAGCCACCTCCCACCACACAACCCTC  
CTTCCAGGGTCTGAACGCCAGGTGCAGGCTCTCCTGAGCAGGTATGGCCCTGGGAAGCTGTACCAGGTGA  
CAAGCAACATCAGTGGGACTGGGACTCTGGACCTGACTCTGCCTCGGGGCCAAATCGTGGCCATCCTTCA  
AAACAAGGACACCAAAGGCAACAGCGGCCGCTGGCTGGTGGACACCGGGGACATCGTGGGTATGTGCCG  
GCTGGGAAACTACAGCTGTACCATGTGGTCCCCAGTGCAGAGGAGCTCAGAAGGCAGGCGGGGCTGAACA  
AAGACCCCGATGCTAACACCGGAGCCAGCCAGCTCTAGTGCCTCTATTCCACCATGAACCAGGT  
CATAGCCGCTACCCTTTTGTGGCCAGAAGCAGCCATGAAGTGAAGTGCAGGCAGGCCAGCCTGTGACC  
ATCCTGGAGGCCAGGACAAGAAGGGGAACCCTGAGTGGAGCCTGGTGGAAAGTGAATGGACAGAGGGGT  
ATGTGCCCTTCTGGCTTCTTGCCAGGGCTCGGAGCCAGTTCTGTGGGCTGGAGTCTGCCCTCT

ACGCGTACGCGGCCGCTCGAGCAGAACTCATCTCAGAAGAGGATCTGGCAGCAATGATATCCTGGATT  
ACAAGGATGACGACGATAAGGTTTAA

Protein Sequence: >RC217628 representing NM\_001001669  
 Red=Cloning site Green=Tags(s)

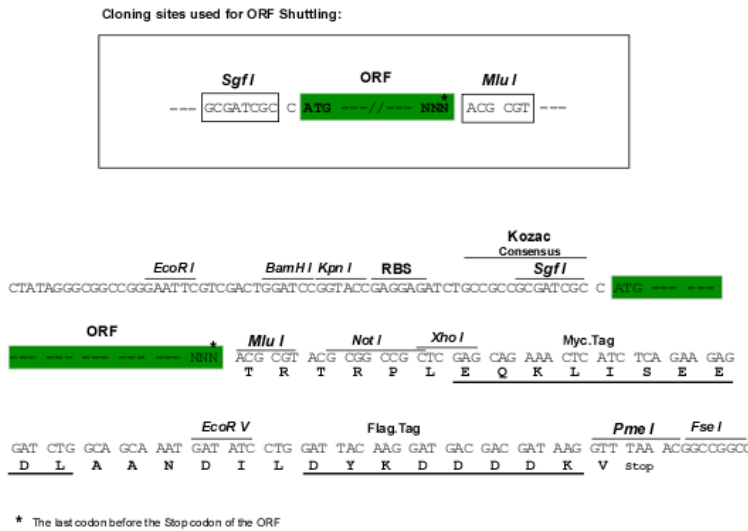
MAKHGADEPSSRSGSPDREGRASEDRSL LHQRLAVRELIDTEVSYLHMLQLCASDIRSRLQQLPQGDLDV  
 LFSNIDDIKVNRSRFLHDLQETASKEEQVQLVGNIFLEFQEELEQVYKYVCASYDQALLLVDTYRKEPE  
 LQRHIQGIWEAVVPQAGSSGLSFLLLVIPLQRITRYPLLLQKILENTVPDASAYPVLQRAVSALQDVNTNI  
 NEYKMRKEVASKYTKVEQLTLRERLARINTHTLSKKTTRLSQLLKQEAGLIPRTEDKEFDDLEERFQVVS  
 LCVTELKNNVAAYLDNLQAFLYFRPHEYNDIPEGPAVQYCNLARDLHLEAFKFKQRLVWQPLCSL  
 AKALLGPQNLIKKRLDKLLDFERVEEKLEVGSVTYQEEAARHTYQALNSLLVAELPQFNQVMQWLGQI  
 MCTFVTLRDLAKQVLQRAEGSMAQLPHHHVPEPAFRKLVEDALGRTSNQLRSFQETFEKVQPPPTTQPL  
 LPSERQVQALLSRYGPKLYQVTSNISGTGTLDLTLPRGQIVAILQNKDTKNSGRWLVDTGGHRGYVP  
 AGKLQLYHVVPSAEELRRQAGLNKDPCLTPEPSPALVPSIPTMNQVIAAYPFVARSSHEVSLQAGQPVT  
 ILEAQDKKGNPEWSLVEVNGQRGYVPSGFLARARSPVLWGWSLPS

TRTRPLEQKLISEEDLAANDILDYKDDDDKV

Chromatograms: [https://cdn.origene.com/chromatograms/mk8015\\_a08.zip](https://cdn.origene.com/chromatograms/mk8015_a08.zip)

Restriction Sites: SgfI-MluI

Cloning Scheme:



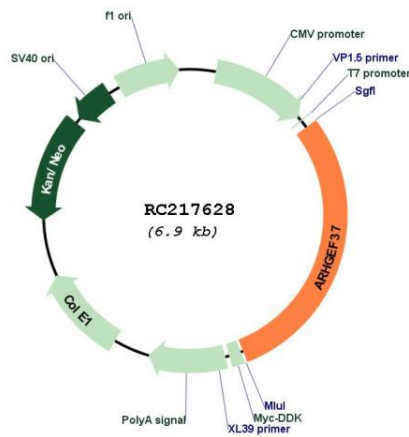
ACCN: NM\_001001669

ORF Size: 2025 bp

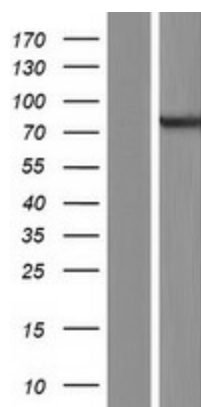
OTI Disclaimer: The molecular sequence of this clone aligns with the gene accession number as a point of reference only. However, individual transcript sequences of the same gene can differ through naturally occurring variations (e.g. polymorphisms), each with its own valid existence. This clone is substantially in agreement with the reference, but a complete review of all prevailing variants is recommended prior to use. [More info](#)

OTI Annotation: This clone was engineered to express the complete ORF with an expression tag. Expression varies depending on the nature of the gene.

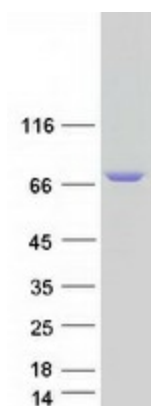
<b>Components:</b>	The ORF clone is ion-exchange column purified and shipped in a 2D barcoded Matrix tube containing 10ug of transfection-ready, dried plasmid DNA (reconstitute with 100 ul of water).
<b>Reconstitution Method:</b>	<ol style="list-style-type: none"> <li>1. Centrifuge at 5,000xg for 5min.</li> <li>2. Carefully open the tube and add 100ul of sterile water to dissolve the DNA.</li> <li>3. Close the tube and incubate for 10 minutes at room temperature.</li> <li>4. Briefly vortex the tube and then do a quick spin (less than 5000xg) to concentrate the liquid at the bottom.</li> <li>5. Store the suspended plasmid at -20°C. The DNA is stable for at least one year from date of shipping when stored at -20°C.</li> </ol>
<b>RefSeq:</b>	<u>NM_001001669.3</u>
<b>RefSeq Size:</b>	4865 bp
<b>RefSeq ORF:</b>	2028 bp
<b>Locus ID:</b>	389337
<b>UniProt ID:</b>	<u>A1IGU5</u>
<b>Cytogenetics:</b>	5q32
<b>MW:</b>	76.1 kDa
<b>Gene Summary:</b>	May act as a guanine nucleotide exchange factor (GEF).[UniProtKB/Swiss-Prot Function]

**Product images:**


Circular map for RC217628



Western blot validation of overexpression lysate (Cat# [LY424240]) using anti-DDK antibody (Cat# [TA50011-100]). Left: Cell lysates from untransfected HEK293T cells; Right: Cell lysates from HEK293T cells transfected with RC217628 using transfection reagent MegaTran 2.0 (Cat# [TT210002]).



Coomassie blue staining of purified ARHGEF37 protein (Cat# [TP317628]). The protein was produced from HEK293T cells transfected with ARHGEF37 cDNA clone (Cat# RC217628) using MegaTran 2.0 (Cat# [TT210002]).