

Product datasheet for **RC217618**

RHOXF1 (NM_139282) Human Tagged ORF Clone

Product data:

Product Type:	Expression Plasmids
Tag:	Myc-DDK
Symbol:	RHOXF1
Synonyms:	OTEX; PEPPI
Mammalian Cell Selection:	Neomycin
Vector:	pCMV6-Entry (PS100001)
E. coli Selection:	Kanamycin (25 ug/mL)

ORF Nucleotide Sequence: >RC217618 ORF sequence
Red=Cloning site Blue=ORF Green=Tags(s)

TTTGTGAATACGACTCACTATAGGGCGGCCGGAATTCGTGCGACTGGATCCGGTACCGAGGAGATCTGCC
GCC**CGATCGCC**

ATGGCGCGTTCGCTCGTCCACGACACCGTGTCTACTGCCTGAGTGTATACCAGGTAAAAATAAGCCCCA
CACCTCAGCTGGGGGCAGCATCAAGCGCAGAAGGCCATGTTGGCCAAGGAGCTCCAGGCCTCATGGGTAA
TATGAACCTGAGGGCGGTGTGAACACGAGAACGGCATGAACCGCATGGCGGCATGATCCCCGAGGGC
GGCGGTGGAACACGAGGACCTCGGCAGCAGCCGAGCCCCCGCGGAGGAGCCGGCCAGGCGGCATGG
AGGGTCCGACGCCGAGAACATGCAGCCACGAACCTCGGCGCACGAAGTTCACGCTGTTGCAGGTGGAGGA
GCTGGAAAGTGTTCGACACACTCAATACCCTGATGTGCCACAGAAGGGAACCTGCCGAAACTTA
GGTGTGACTGAAGACAAAGTGCGGTTTGGTTTAAAGATAAAAGGGCCAGATGTAGGCGACATCAGAGAG
AATTAATGCTCGCAATGAACACGTGCTGACCCAGACGACTGTGTCTACATCGTCGTGGAC

ACGCGTACGCGGCCGCTCGAGCAGAACTCATCTCAGAAGAGGATCTGGCAGCAATGATATCCTGGATT
ACAAGGATGACGACGATAAGGTTTAA

Protein Sequence: >RC217618 protein sequence
Red=Cloning site Green=Tags(s)

MARSLVHDTVYFCLSVYQVKISPTPQLGAASSAEGHVQGAPGLMGNMNPPEGVNHENGMNRDGGMIPEG
GGGNQEPRQQPPPEEPAQAAMEGPQENMQPRTTRTKFTLLQVEELESVFRHTQYDPVPTRELAENL
GVTEDKVRVWFKNKRARCRRHQRELMANLADPDDCVYIVVD

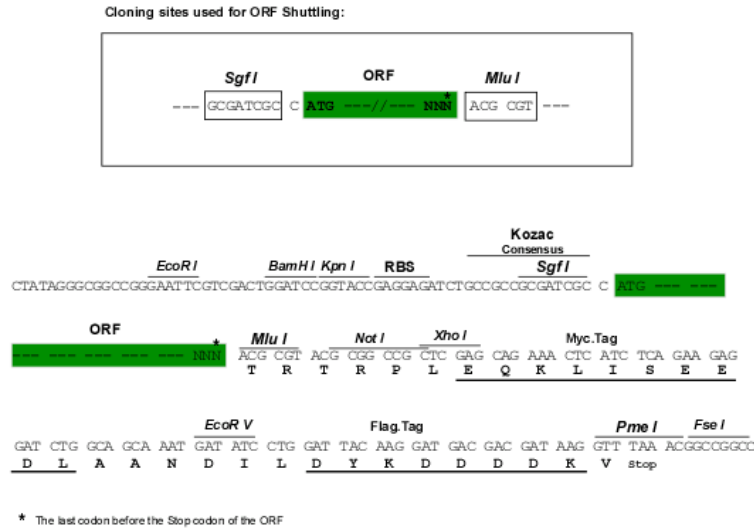
TRTRPLEQKLISEEDLAANDILDYKDDDDKV

Chromatograms: https://cdn.origene.com/chromatograms/mk6450_g04.zip



Restriction Sites: SgfI-MluI

Cloning Scheme:



ACCN: NM_139282

ORF Size: 552 bp

OTI Disclaimer: Due to the inherent nature of this plasmid, standard methods to replicate additional amounts of DNA in E. coli are highly likely to result in mutations and/or rearrangements. Therefore, OriGene does not guarantee the capability to replicate this plasmid DNA. Additional amounts of DNA can be purchased from OriGene with batch-specific, full-sequence verification at a reduced cost. Please contact our customer care team at custsupport@origene.com or by calling 301.340.3188 option 3 for pricing and delivery.

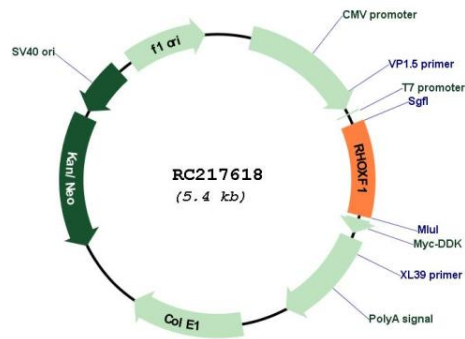
The molecular sequence of this clone aligns with the gene accession number as a point of reference only. However, individual transcript sequences of the same gene can differ through naturally occurring variations (e.g. polymorphisms), each with its own valid existence. This clone is substantially in agreement with the reference, but a complete review of all prevailing variants is recommended prior to use. [More info](#)

OTI Annotation: This clone was engineered to express the complete ORF with an expression tag. Expression varies depending on the nature of the gene.

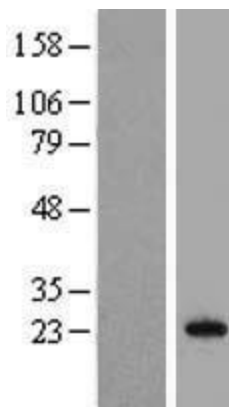
Components: The ORF clone is ion-exchange column purified and shipped in a 2D barcoded Matrix tube containing 10ug of transfection-ready, dried plasmid DNA (reconstitute with 100 ul of water).

Reconstitution Method:	<ol style="list-style-type: none"> 1. Centrifuge at 5,000xg for 5min. 2. Carefully open the tube and add 100ul of sterile water to dissolve the DNA. 3. Close the tube and incubate for 10 minutes at room temperature. 4. Briefly vortex the tube and then do a quick spin (less than 5000xg) to concentrate the liquid at the bottom. 5. Store the suspended plasmid at -20°C. The DNA is stable for at least one year from date of shipping when stored at -20°C.
Note:	Plasmids are not sterile. For experiments where strict sterility is required, filtration with 0.22um filter is required.
RefSeq:	<u>NM_139282.3</u>
RefSeq Size:	780 bp
RefSeq ORF:	555 bp
Locus ID:	158800
UniProt ID:	<u>Q8NHV9</u>
Cytogenetics:	Xq24
Protein Families:	Druggable Genome, Transcription Factors
MW:	20.5 kDa
Gene Summary:	This gene is a member of the PEPP subfamily of paired-like homeobox genes. The gene may be regulated by androgens and epigenetic mechanisms. The encoded nuclear protein is likely a transcription factor that may play a role in human reproduction. [provided by RefSeq, Dec 2012]

Product images:



Circular map for RC217618



Western blot validation of overexpression lysate (Cat# [LY408338]) using anti-DDK antibody (Cat# [TA50011-100]). Left: Cell lysates from un-transfected HEK293T cells; Right: Cell lysates from HEK293T cells transfected with RC217618 using transfection reagent MegaTran 2.0 (Cat# [TT210002]).