

Product datasheet for **RC217617**

DOK1 (NM_001381) Human Tagged ORF Clone

Product data:

Product Type:	Expression Plasmids
Product Name:	DOK1 (NM_001381) Human Tagged ORF Clone
Tag:	Myc-DDK
Symbol:	DOK1
Synonyms:	P62DOK; pp62
Mammalian Cell Selection:	Neomycin
Vector:	pCMV6-Entry (PS100001)
E. coli Selection:	Kanamycin (25 ug/mL)



[View online »](#)

ORF Nucleotide Sequence:

>RC217617 representing NM_001381
 Red=Cloning site Blue=ORF Green=Tags(s)

TTTTGTAATACGACTCACTATAGGGCGGCCGGGAATTCGTCGACTGGATCCGGTACCGAGGAGATCTGCC
 GCC**CGCATCGCC**

ATGGACGGAGCAGTGATGGAAGGCCGCTTTTTTTCAGAGTCAGCGCTTTGGGACCAAGAGGTGGAGGA
 AGACCTGGGCCGTGCTCTACCCGGCCAGTCCCCACGGCGTAGCGCGGCTCGAGTTCTTTGACCATAAGGG
 GTCGAGCTCTGGGGGTGGCCGAGGGAGCTCGCGCCGCTGGACTGCAAAGTGATCCGCTCGGCTGAGTGT
 GTGAGTGTGGCCCCGTACCGTGGAGACCCCCCTGAGCCCGGCCCACTGCCTTCCGCTGGACTG
 CTCAGCGCTCGCACCTGCTGGCGCCGACGCGCCCTCAGTGCAGCCTGGGTGCAGACGCTGTGCCGAAA
 CGCCTTCCGAAAGGCAGCTGGACTCTGGCGCTACCGATAACCCACCTAAGCTTTCTGCCCTGGAGATG
 CTGGAGAACTCCTGTACAGCCCTACCTGGGAAGGATCCCAATTCTGGGTAAACGGTGCAGAGGACTGAGG
 CCGCCGAGCGCTGTGCCCTGCATGGCTCCTACGTGCTGAGGTGGAGGCTGAAAGGCTGACTCTCCTGAC
 CGTGGGGGCCAGAGTCAGATACTGGAGCCACTCTGTCTGGCCCTACACTCTGTTGCGTGCATATGGC
 CGGGACAAGGTGATGTTCTCTTTTCGAGGCGGCCGCCGCTGCCCTCAGGCCCTGGAACCTTCACCTTCC
 AGACGGCACAGGGAAATGACATCTTCCAGGCAGTTGAGACTGCCATCCACCGGCAGAAGGCCAGGGAAA
 GGCCGGACAGGGGACGATGTTCTCAGAGCTGACTCCCATGAAGGGGAGGTGGCAGAGGGGAAGTTGCC
 TCCCCACCTGGCCCCAAGAGCTCCTCGACAGTCCCCAGCCCTGTATGCTGAGCCCTTAGACTCCCTGC
 GCATTGCTCCATGCCCTTCCAGGACTCCCTATACTCAGACCCCTTGGACAGCAGCTGCTCAGGCAGG
 AGAGGGAGTACAACGGAAGAACTCTCTATTGGGACTTGATGAGCATGCGCAGCAGCAGTTGCTGAAG
 GCCAAGCTGACAGACCCAAAGAGGATCCCATCTATGATGAACCTGAGGGCTGGCCCCAGTCCCTCCCC
 AGGGCCTTATGATCTGCCTCGGGAGCCCAAGGATGCATGGTGGTGCCAAGCTCGGGTGAAGGAGGAGGG
 CTATGAGCTCCCTACAACCCTGCCACTGACTACGCTGCTGACCCCTCGGAGCACAAAGCCCTC
 CTTGCTCCAAGCCCCAGGGCCAGCCTTCCCTGAACCTGGTACTGCAACTGGCAGTGGCATCAAAGCC
 ACAACTCAGCCCTGTACAGCCAGGTCCAGAAGAGCGGGCCCTCAGGGAGCTGGGACTGTGGGCTCTTAG
 AGTAGGGACTGACAAGACTGGGGTCAAGTCAGAGGGCTTACC

ACGCGTACGCGGCCGCTCGAGCAGAACTCATCTCAGAAGAGGATCTGGCAGCAAATGATATCCTGGATT
 ACAAGGATGACGACGATAAGGTTTAA

Protein Sequence:

>RC217617 representing NM_001381
 Red=Cloning site Green=Tags(s)

MDGAVMEGPLFLQSQRFGTKRWRKTWAVLYPASPFGVARLEFFDHKSSSSGGGRGSSRRLDCKVIRLAEC
 VSVAPVTVETPPEPGATAFRLDTAQRSHLLAADAPSSAAWVQTLCRNAFPKGSWTLAPTDNPPKLSALEM
 LENSLYSPTWEGSQFWVTVQRTEAAERCGLHGSYVLRVEAERLTLLTVGAQSQIILEPLLWVPTLLRRYR
 RDKVMFSFEAGRRCPSGPGTFTFQTAQGNDFQAVETAHRKQAQKAGQGHDVLRADSHGEVAEGKLP
 SPPGPQELLDSPALYAEPLDSLRIAPCPSQDSLYSPLDSTSAQAGEGVQRKPLYWDLYEHAQQQLLK
 AKLTDPKEDPIYDEPEGLAPVPPQGLYDLPREPKDAWQCQARVKEEGYELPYNPATDDYAVPPRSTKPL
 LAPKPGPAPPEPGTATGSGIKSHNSALYSQVQKSGASGSWDCGLSRVGTDKTGKSEGST

TRTRPLEQKLISEEDLAANDILDYKDDDDKV

Chromatograms:

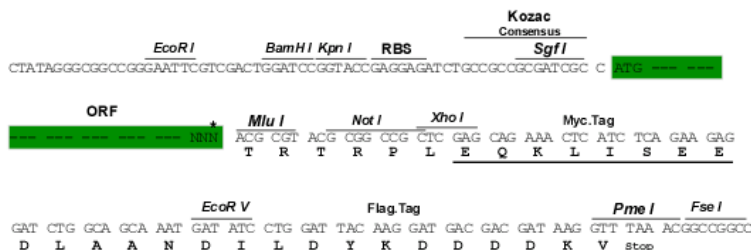
https://cdn.origene.com/chromatograms/mg2819_h05.zip

Restriction Sites:

Sgfl-Mlul

Cloning Scheme:

Cloning sites used for ORF Shutting:



* The last codon before the Stop codon of the ORF

ACCN: NM_001381

ORF Size: 1443 bp

OTI Disclaimer: The molecular sequence of this clone aligns with the gene accession number as a point of reference only. However, individual transcript sequences of the same gene can differ through naturally occurring variations (e.g. polymorphisms), each with its own valid existence. This clone is substantially in agreement with the reference, but a complete review of all prevailing variants is recommended prior to use. [More info](#)

OTI Annotation: This clone was engineered to express the complete ORF with an expression tag. Expression varies depending on the nature of the gene.

Components: The ORF clone is ion-exchange column purified and shipped in a 2D barcoded Matrix tube containing 10ug of transfection-ready, dried plasmid DNA (reconstitute with 100 ul of water).

Reconstitution Method:

1. Centrifuge at 5,000xg for 5min.
2. Carefully open the tube and add 100ul of sterile water to dissolve the DNA.
3. Close the tube and incubate for 10 minutes at room temperature.
4. Briefly vortex the tube and then do a quick spin (less than 5000xg) to concentrate the liquid at the bottom.
5. Store the suspended plasmid at -20°C. The DNA is stable for at least one year from date of shipping when stored at -20°C.

RefSeq: [NM_001381.4](#)
RefSeq Size: 1908 bp

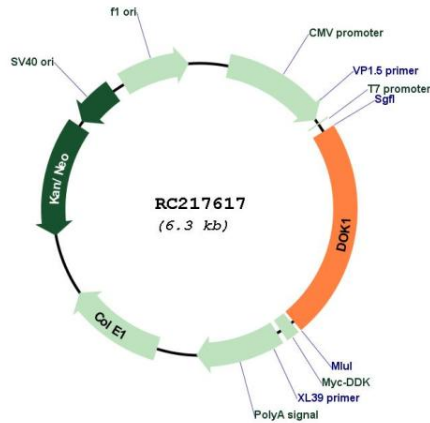
RefSeq ORF: 1446 bp

Locus ID: 1796

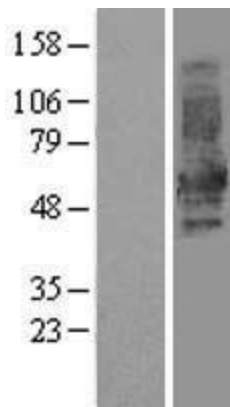
UniProt ID: [Q99704](#)
Cytogenetics: 2p13.1

Domains: PH, IRS
Protein Families: Druggable Genome
MW: 52.2 kDa
Gene Summary: The protein encoded by this gene is part of a signal transduction pathway downstream of receptor tyrosine kinases. The encoded protein is a scaffold protein that helps form a platform for the assembly of multiprotein signaling complexes. Several transcript variants encoding different isoforms have been found for this gene. [provided by RefSeq, Jan 2016]

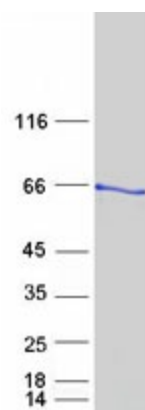
Product images:



Circular map for RC217617



Western blot validation of overexpression lysate (Cat# [LY419987]) using anti-DDK antibody (Cat# [TA50011-100]). Left: Cell lysates from untransfected HEK293T cells; Right: Cell lysates from HEK293T cells transfected with RC217617 using transfection reagent MegaTran 2.0 (Cat# [TT210002]).



Coomassie blue staining of purified DOK1 protein (Cat# [TP317617]). The protein was produced from HEK293T cells transfected with DOK1 cDNA clone (Cat# RC217617) using MegaTran 2.0 (Cat# [TT210002]).