

Product datasheet for **RC217614**

VPS16 (NM_080413) Human Tagged ORF Clone

Product data:

Product Type:	Expression Plasmids
Product Name:	VPS16 (NM_080413) Human Tagged ORF Clone
Tag:	Myc-DDK
Symbol:	VPS16
Synonyms:	DYT30; hVPS16
Mammalian Cell Selection:	Neomycin
Vector:	pCMV6-Entry (PS100001)
E. coli Selection:	Kanamycin (25 ug/mL)



[View online »](#)

ORF Nucleotide
Sequence:

>RC217614 representing NM_080413
Red=Cloning site Blue=ORF Green=Tags(s)

TTTTGTAATACGACTCACTATAGGGCGGCCGGAATTCGTCGACTGGATCCGGTACCGAGGAGATCTGCC
GCCCGCATCGCC

ATGGACTGCTACACGGCGAACTGGAACCCACTCGGGACTCTGCCTTTTACCGGAAATATGAGCTGTACA
GCATGGACTGGGACCTGAAGGAGGAACTCAGGGATTGCCTGGTGGCTGCTGCACCCATATGGGGGCCCAT
TGCACTGCTGAGGAACCCCTGGCGGAAGGAGAAAGCTGCTAGTGTGAGGCCAGTGCATATATACTCT
GCTTCCGGCATGCCTCTGGCCAGCCTGCTGTGGAAGAGTGGACCCGTGGTGTCCCTGGGCTGGTCAGCTG
AGGAGGAGCTGCTCTGTGTGCAGGAAGATGGTGTGTACTGGTTTATGGGCTTCATGGTGACTTCCGGAG
ACACTTCAGCATGGGCAATGAAGTGTCCAGAACCAGGTTCTGGATGCCCGGATCTTTCACACTGAGTTT
GGTTCCGGAGTGGCCATCCTCACAGGGGCCACCCTCACCCCTCAGTGCCAATGTGGGTGACCTCAAAC
TCCGCCGATGCCAGAGGTGCCAGGTCTGCAAAGTGCACCCTCCTGCTGGACTGTGCTGTGCCAGGACCG
AGTGGCACACATTCTTCTGGCTGTGGGCTGACCTTTACCTCTTGGACCATGCAGCCTGCTCCGCAGTG
ACGCCCCCTGGCCTGGCCCCAGGAGTAAGCAGCTTCTACAGATGGCTGTCTCCTCACCTACCGACACC
TGGCACTTTCACAGACACAGGCTACATCTGGATGGGGACAGCATCACTCAAGGAGAAGCTATGTGAGTT
CAACTGCAACATCCGGGCACCTCCAAGCAGATGGTCTGGTGCAGCCGTCTCGTAGCAAGGAGAGGGCC
GTGGTGGTGGCCTGGGAAAGGGCGCTGATGGTGGTGGGCGATGCACCCGAGAGCATCCAATATAAGCAGC
TCACCATCCAGGTGCTGCTGGACAGGCTCGTGTTCGGGAGACTTACCCCTGGCCATCCAGATATGCGA
GTACTTGGCCTTCTCTGAAGTACAGGGCGTCAGCAGGATCCTGGCCACTGGGCTGCTACAAGGTGCAA
CAGAAGGATGTCTCAGATGAGGATGTGGCTCGAGCCATTAACCAGAAGCTGGGGGACACGCTGGTGTCT
CTTACTCCGACATTGCTGCACGAGCCTATGGTTGTGGCCGACGGAGCTGGCCATCAAGTGTGGAGTA
TGAGCCACGCTCAGGGGAGCAGGTACCCCTTCTCCTAAAGATGAAGAGGAGCAAACCTGGCACTAAGCAAG
GCCATCGAGAGCGGGGACACTGACCTGGTGTTCACGGTGTGCTGCACCTGAAGAACGAGCTGAACCGAG
GAGATTTTTTCATGACCTTCGGAATCAGCCCATGGCCCTCAGTTTGTACCGACAGTTCTGTAAGCATCA
GGAGCTAGAGACGCTGAAGGACCTTACAATCAGGATGACAATCACCAGGAATTGGGCGAGCTTCCACATC
CGAGCCAGCTATGCTGCAGAAGAGCGTATTGAGGGGCGAGTAGCAGCTCTGCAGACAGCCCGGATGCCT
TCTACAAGGCCAAGAATGAGTTTGCAGCCAAGGCTACAGAGGATCAAATGCGGCTCCTACGGCTGCAGCG
GCGCCTAGAAGACGAGCTGGGGGCGCAGTTCTAGACCTGTCTCTACATGACACAGTTACCACCCTCATT
CTTGGCGGTCAACAAGCGTGCAGAGCAGCTGGCACGTGACTTCCGCATCCCTGACAAGAGGCTCTGGT
GGCTGAAGCTGACTGCCCTGGCAGATTTGGAAGATTGGGAAGAGCTAGAGAAGTTTTCCAAGAGCAAGAA
ATCACCCATTGGCTACCTGCCTTTTGTGGAGATCTGCATGAAACAACATAACAATACGAAGCCAAGAA
TATGCTTCCCGCTGGTCCCAGCAGAAGGTCAAGGCTTTGCTTCTTGTGGCGATGTGGCTCAGGCTG
CAGATGTGGCCATCGAACACCGGAATGAGGCTGAGCTGAGCCTCGTATTGCTCCACTGCACGGGAGCCAC
AGATGGGGCCACAGCTGACAAGATTCACGGGCCAGGGCACAAGCCAGAAGAAG

ACGCGTACGCGGCCGCTCGAGCAGAACTCATCTCAGAAGAGGATCTGGCAGCAAATGATATCCTGGATT
ACAAGGATGACGACGATAAGGTTTAA

Protein Sequence: >RC217614 representing NM_080413
 Red=Cloning site Green=Tags(s)

MDCYTANWNPLGDSAFYRKYELYSMDWDLKEELRDCLVAAAPYGGPIALLRNPWRKEKAASVRPVLDIYS
 ASGMPLASLLWKS GPVSLGWSAEELL CVQEDGAVLVYGLHGDFRRHF SMGNEVLQNRVLDARIFHTEF
 GSGVAILTGAHRFTLSANVGD LKLRMPEV PGLQ SAPSCWTVL CQDRVAHILLAVGPDLYLLDHAACSAV
 TPPGLAPGVSSFLQMAVSFTYRHLALFTDTGYIWMGTASLKEKLCFNCNIRAPPKQMVWCSRPRSKERA
 VVVAWERRLMVVGDAPE SIQYKQ LTIQVLLDRLVLRRLYPLAIQICEYLRLPEVQVSRILAHWACYKVQ
 QKDVSDEEDVARAINQKLG DTPGVSYS DIAARAYGCGRTE LAIKLLEYEPRSGEQVPLLLKMKRSLALSK
 AIESGDTDLVFTVLLH LKNE LN RGDFFM TLRNQPMALSLYRQFCKHQELET LKDLYNQDDNHQELGSFHI
 RASYAAEERIEGRVAALQTAADAFYKAKNEFAAKATEDQMRLRLQRLEDELGGQFLDSLHDTVTTLI
 LGGHNKRAEQLARDFRIPDKRLWWLKL TALADLEDWEELEKFSKSKKSPIGYLPFVEICMKQHNYEAKK
 YASRVGPEQKVKALLLVGDVAQAADVAIEHRNEAELSLVLSHCTGATDGATADKIQRARAQAKK

TRTRPLEQKLISEEDLAANDILDYKDDDDKV

Chromatograms: https://cdn.origene.com/chromatograms/mk8073_c12.zip

Restriction Sites: SgfI-MluI

Cloning Scheme:



ACCN: NM_080413

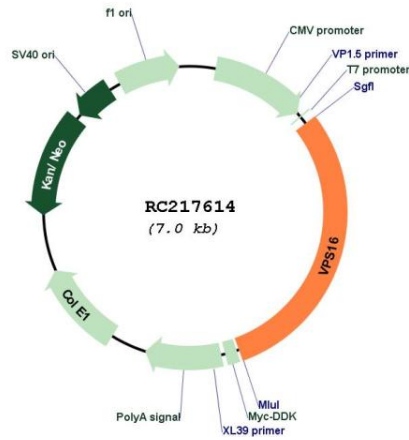
ORF Size: 2085 bp

OTI Disclaimer: The molecular sequence of this clone aligns with the gene accession number as a point of reference only. However, individual transcript sequences of the same gene can differ through naturally occurring variations (e.g. polymorphisms), each with its own valid existence. This clone is substantially in agreement with the reference, but a complete review of all prevailing variants is recommended prior to use. [More info](#)

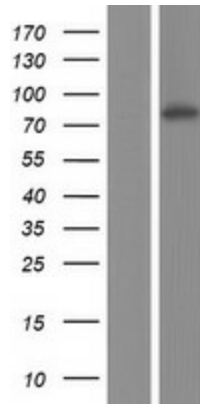
OTI Annotation: This clone was engineered to express the complete ORF with an expression tag. Expression varies depending on the nature of the gene.

Components:	The ORF clone is ion-exchange column purified and shipped in a 2D barcoded Matrix tube containing 10ug of transfection-ready, dried plasmid DNA (reconstitute with 100 ul of water).
Reconstitution Method:	<ol style="list-style-type: none">1. Centrifuge at 5,000xg for 5min.2. Carefully open the tube and add 100ul of sterile water to dissolve the DNA.3. Close the tube and incubate for 10 minutes at room temperature.4. Briefly vortex the tube and then do a quick spin (less than 5000xg) to concentrate the liquid at the bottom.5. Store the suspended plasmid at -20°C. The DNA is stable for at least one year from date of shipping when stored at -20°C.
Note:	Plasmids are not sterile. For experiments where strict sterility is required, filtration with 0.22um filter is required.
RefSeq:	NM_080413.2 , NP_536338.1
RefSeq Size:	2337 bp
RefSeq ORF:	2088 bp
Locus ID:	64601
UniProt ID:	Q9H269
Cytogenetics:	20p13
Domains:	Vps16_C, Vps16_N
Protein Families:	Druggable Genome
MW:	78.1 kDa
Gene Summary:	Vesicle mediated protein sorting plays an important role in segregation of intracellular molecules into distinct organelles. Genetic studies in yeast have identified more than 40 vacuolar protein sorting (VPS) genes involved in vesicle transport to vacuoles. This gene encodes the human homolog of yeast class C Vps16 protein. The mammalian class C Vps proteins are predominantly associated with late endosomes/lysosomes, and like their yeast counterparts, may mediate vesicle trafficking steps in the endosome/lysosome pathway. Two transcript variants encoding different isoforms have been found for this gene. [provided by RefSeq, Jul 2009]

Product images:



Circular map for RC217614



Western blot validation of overexpression lysate (Cat# [LY409186]) using anti-DDK antibody (Cat# [TA50011-100]). Left: Cell lysates from untransfected HEK293T cells; Right: Cell lysates from HEK293T cells transfected with RC217614 using transfection reagent MegaTran 2.0 (Cat# [TT210002]).