

## Product datasheet for RC217613

### TRPM3 (NM\_206947) Human Tagged ORF Clone

#### Product data:

Product Type:	Expression Plasmids
Product Name:	TRPM3 (NM_206947) Human Tagged ORF Clone
Tag:	Myc-DDK
Symbol:	TRPM3
Synonyms:	GON-2; LTRPC3; MLSN2
Vector:	pCMV6-Entry (PS100001)
E. coli Selection:	Kanamycin (25 ug/mL)
Cell Selection:	Neomycin
ORF Nucleotide Sequence:	>RC217613 representing NM_206947 Red=Cloning site Blue=ORF Green=Tags(s)

TTTTGTAATACGACTCACTATAGGGCGCCGGAATTCGTCGACTGGATCCGGTACCGAGGAGATCTGCC  
GCC**GCGATCGCC**

ATGTATGTGCGAGTATCTTTTGATACAAAACCTGATCTCCTCTTACACCTGATGACCAAGGAATGGCAGT  
TGGAGCTTCCCAAGCTTCTCATCTCTGTCCATGGGGCCTGCAGAACTTTGAACTCCAGCCAAAACCTCAA  
GCAAGTCTTTGGAAAGGGCTCATCAAAGCAGCAATGACAACCTGGAGCGTGGATATTCACCTGGAGGGGTT  
AACACAGGTGTTATTCGTCATGTTGGCGATGCCTTGAAGGATCATGCCTCTAAGTCTCGAGGAAAGATAT  
GCACCATAGGTATTGCCCTGGGGAATTGGGAAAACAGGAGGACCTCATTGGAAGAGATGTTGTCCG  
GCCATACCAGACCATGTCCAATCCCATGAGCAAGCTCACTGTTCTCAACAGCATGCATTCCTCACTTCATT  
CTGGCTGACAACGGGACCACTGGAAAATATGGAGCAGAGGTGAACTTCGAAGACAACCTGGAAAAGCATA  
TTTCACTCCAGAAGATAAACACAAGATGCCTGCCGTTTTCTCTTCTTCTGACTCCCGCTTGTTTTATTCATT  
TTGGGGTAGTTGCCAGTTAGACTCAGTTGGAATCGGTCAAGGTGTTCTGTGGTGGCACTCATAGTGAA  
GGAGACCAATGTGATCTCGATTGTTTTGGAGTACCTTCGAGACACCCCTCCCGTGCCAGTGGTGTCT  
GTGATGGGAGTGGACGGGCATCGGACATCCTGGCCTTTGGGCATAAATACTCAGAAGAAGCGGCACTGAT  
AAATGAATCTTTGAGGGACAGCTGTTGGTACTATACAGAAGACTTTCACATACACTCGAACCCAAAGCT  
CAGCATCTGTTTCATCCTCATGGAGTGCATGAAGAAGAAGGAATTGATTACGGTATTTTCGGATGGGAT  
CAGAAGGACACCAGGACATTGATTTGGCTATCCTGACAGCTTTACTCAAAGGAGCCAATGCCTCGGCCCC  
AGACCAACTGAGCTTAGCTTTAGCCTGGAACAGAGTGCACATCGCTCGCAGCCAGATCTTTATTTACGGG  
CAACAGTGGCCGGTGGGATCTCTGGAGCAAGCCATGTTGGATGCCTTAGTTCTGGACAGAGTGGATTTTG  
TGAATTACTCATAGAGAATGGAGTAAGCATGCACCGTTTTCTCACCATCTCCAGACTAGAGGAATTGTA  
CAATACGAGACATGGGCCCTCAAATACATTGTACCACTTGGTCAAGGATGTCAAAAAGGGGAACCTGCC  
CCAGACTACAGAATCAGCCTGATTGACATCGGCCTGGTATCGAGTACCTGATGGCGGGGCTTATCGCT  
GCAACTACACGCGCAAGGCTTCCGGACCTCTACCACAACCTCTTCGGCCCAAGAGGGATGATATTCC  
CTTGAGGCGAGGAAGAAAAGACAACCAAGAAACGTGAAGAAGAGGTGGACATTGACTTGGATGATCCTGAG  
ATCAACCACTTCCCTTCCCTTTCCATGAGCTCATGGTGTGGGCTGTTCTCATGAAGCGGCAGAAGATGG



View online »

CCCTGTTCTTCTGGCAGCACGGTGAGGAGGCCATGGCCAAGGCCCTGGTGGCCTGCAAGCTCTGCAAAGC  
 CATGGCTCATGAGGCCTCTGAGAACGACATGGTTGACGACATTTCCAGGAGCTGAATCACAAATCCAGA  
 GACTTTGGCCAGCTGGCTGTGGAGCTCCTGGACCAGTCTACAAGCAGGACGAACAGCTGGCCATGAAAC  
 TGCTGACGTATGAGCTGAAGAACTGGAGCAACGCCACGTGCTGCAGCTTGCCGTGGCTGCCAAACCCG  
 CGACTTCATCGCGCACACGTGCAGCCAGATGCTGCTCACCGACATGTGGATGGGCCGGCTCCGCATGCGC  
 AAGAATCAGGCCTCAAGTAATTCTGGGAATTTACTTCTCCTTCAATTCTCAGCTTGGAGTTCAAGA  
 ACAAAGACGACATGCCCTATATGTCTCAGGCCAGGAAATCCACCTCCAAGAGAAGGAGGCAGAAGAAC  
 AGAGAAGCCACAAAGGAAAAAGAGGAAGGACATGGAGCTCACAGCAATGTTGGGACGAAACAACGGG  
 GAGTCTCCAGGAAGAAGGATGAAGAGGAAGTTAGAGCAAGCACCGTTAATCCCCCTCGGCAGAAAAA  
 TCTATGAATTCTACAATGCACCCATCGTGAAGTTCTGGTTCTACACACTGGCGTATATCGGATACCTGAT  
 GCTCTTCAACTATATCGTGTAGTGAAGATGGAACGCTGGCCGTCCACCCAGGAATGGATCGTAATCTCC  
 TATATTTTACCCTGGGAATAGAAAAGATGAGAGAGATTCTGATGTCAGAGCCAGGAAGTTGCTACAGA  
 AAGTGAAGGTATGGCTGCAGGAGTACTGGAATGTACGGACCTCATCGCCATCCTTCTGTTTTCTGTCGG  
 AATGATCCTTCGTCTCAAGACCAGCCCTCAGGAGTGACGGGAGGGTCACTACTGCGTGAACATCATT  
 TACTGGTATATCCGTCTCCTAGACATCTTCGGCGTGAACAAGTATTTGGGCCGTATGTAATGATGATTG  
 GAAAAATGATGATAGACATGATGACTTTGTATCATTATGCTGGTGGTTCTGATGAGCTTTGGGGTCCG  
 CAGGCAAGCCATCCTTTTTCCCAATGAGGAGCCATCATGGAAACTGGCCAAGAACATCTTCTACATGCC  
 TATTGGATGATTTATGGGAAGTGTTCGGGACAGATAGACCCTCCCTGTGGACAGAATGAGACCCGAG  
 AGGATGGTAAAAAATCCAGCTGCCTCCCTGCAAGACAGGAGCTTGGATCGTGCCGGCCATCATGGCCTG  
 CTACCTCTTAGTGGCAAACATCTTGCTGGTCAACCTCCTCATTGCTGTCTTTAACAATACATTTTTTGA  
 GTAAAAATCGATATCCAACCAAGTCTGGAAGTTTCAGAGGTATCAGCTCATCATGACTTTCCATGAAAGGC  
 CAGTTCTGCCCCACCCTGATCATCTTCAGCCACATGACCATGATATCCAGCACCTGTGCTGCCGATG  
 GAGGAAACACAGAGCGACCCGGATGAAAGGGACTACGGCCTGAAACTTTCATAACCCGATGATGACGTC  
 AAGAAAAGTACATGACTTTGAAGAGCAATGCATAGAAGAATACTTCAGAGAAAAGGATGATCGGTTCAACT  
 CATCTAATGATGAGAGGATACGGGTGACTTCAGAAAGGGTGGAGAACATGTCTATGCGGCTGGAGGAAGT  
 CAACGAGAGAGGACTCCATGAAGGCTTCACTCCAGACCGTGGACATCCGGCTGGCGCAGCTGGAAGAC  
 CTTATCGGGCGCATGGCCACGGCCCTGGAGCGCTGACAGGTCTGGAGCGGGCCGAGTCCAACAAAAATCC  
 GCTCGAGGACCTCGTCACTGCACGGACGCCCTACATTGTCCGTGAGAGCAGCTTCAACAGCCAGGA  
 AGGGAACACCTTCAAGCTCCAAGAGAGTATAGACCCTGCAGGTGAGGAGACCATGTCCCAACTTCTCCA  
 ACCTTAATGCCCCGTATGCGAAGCCATTCTTTCTATTCCGTCAATATGAAAGACAAGGTGGTATAGAAA  
 AGTTGGAAGTATTTTTAAAGAAAGTCCCTGAGCCTACACCGGGCTACTAGTTCCCACTCTGTAGCAA  
 AGAACCCAAAGCTCCTGCAGCCCTGCCAACACCTTGGCCATTGTTCTGATTCCAGAAGACCATCATCG  
 TGTATAGACATCTATGTCTCTGCTATGGATGAGCTCCACTGTGATATAGACCCTCTGGACAATTCGGTGA  
 ACATCCTTGGGCTGGGCGAGCCAAGCTTTTCAACTCCAGTACCTTCCACAGCCCTTCAAGTAGTGCCTA  
 TGCAACACTTGCACCCACAGACAGACCTCCAAGCCGGAGCATTGATTTTGGAGACATCACCTCCATGGAC  
 ACTAGATCTTTTTCTCAGACTACACCCACCTCCAGAATGCCAAAACCCCTGGGACTCAGAGCCTCCGA  
 TGTACCACACCATGAGCGTTCAAAAGTAGCCGCTACCTAGCCACCACACCTTTCTTCTAGAAGAGGC  
 TCCCATTTGTGAAATCTCATAGCTTTATGTTTTCCCTCAAGGAGCTATTATGCCAACTTTGGGGTGCCT  
 GTAAAAACAGCAGAATACACAAGTATTACAGACTGTATTGACACAAGGTGTGCAATGCCCTCAAGCAA  
 TTGCGGACAGAGCTGCCTTCCCTGGAGGTCTTGAGACAAAAGTGGAGACTTAACCTGCTGCCATCCAGA  
 GCGAGAAGCAGAAGTGAATCACCACAGCTGACAGTGAAGGAGAATGAGGCCAAAGGCCGAGAGCCACC  
 ATTGCAATATCCTCCCAGGAGGGTGATAACTCAGAGAGAACCCTGTCCAACAACATCACTGTTCCCAAGA  
 TAGAGCGCGCAACAGCTACTCGGCAGAGGAGCCAAGTGCCCATATGCACACACCAGGAAGAGCTTCTC  
 CATCAGTGACAACTCGACAGGCAGCGGAACACAGCAAGCCTGCGAAATCCCTTCCAGAGAAGCAAGTCC  
 TCCAAGCCGAGGGCCGAGGGGACAGCCTGTCCATGAGGAGACTGTCCAGAACATCGGCTTTCCAAAGCT  
 TTGAAAGCAAGCACAAAC

ACGCGTACGCGGCGCTCGAGCAGAAACTCATCTCAGAAGAGGATCTGGCAGCAAATGATATCCTGGATT  
 ACAAGGATGACGACGAT AAGGTTTAA

Protein Sequence: >RC217613 representing NM\_206947  
 Red=Cloning site Green=Tags(s)

MYVRVSDTKPDL LHLMTKEWQLELPKLLISVHGGLQNFELQPKLKQVFGKGLIKAAMTTGAWIFTGGV  
 NTGVI RHVGDAL KDHASKSRGKI CTIGIAPWGI VENQEDL IGRDVVRPYQTMSNPMSKLTVLNSMHSFI  
 LADNGTTGKYGA EVKLRRQLEKHI SLQKINTRCLPFFSLDSRLFYSFWGSCQLDSVIGQGVPPVALIVE  
 GGPNVISIVLE YLRDTPPVVQVCDGSGRASDILAFGHKYSEEGGLINESLRDQLLVTIQKFTFTYTRTQA  
 QHLFIILMECMKKELITVFRMGSEGHQDIDLAILTALLKGANASAPDQLSLALAWN RVDIARSQIFIYG  
 QQWPVGSLEQAMLDALVLD RVDVFKLLIENGVS MHRFLTISRLEELYNTRHGPSNTLYHLVRDVKGNLP  
 PDYRISLIDIGLVIEYLMGGAYRCNYTRKFRFTLYHNLFGPKRDDIPLRRGRKTTKKREEEVDIDLDDPE  
 INHFPPPFHELMVAVLMKRQKMA LFFWQHGE EAMAKALVACKLCKAMAHEASENDM VDDISQELNHNSR  
 DFGQLAVELLDQSYKQDEQLAMKLLTYELKNWSNATCLQLAVA AKHRDFAHTCSQMLL TDMWMGR LMR  
 KNSGLKVLIGILLPPSILSLEFKNKDDMPYMSQAQEIHLQEKEAEPEKPTKEKEEEDMELTAM LGRNNG  
 ESSRKKDEEEVQSKHRLIPLGRKIYEFYNAPIVKFWFYTLAYIGYLMFN YIVLVKMERWPSTQEWIVIS  
 YIFTLGIEKMREILMSEPGKLLQKV VVWLQEYWNVTDLIAILLFSVGMILRLQDQPF RSDGRVIYCVNII  
 YWYIRLLDIFGVNKYLG P YMMIGKMMIDMMYFVIIMLVVLSFVARQAILFPNEEPSWKLAKNIFYMP  
 YWMIYGEVFADQIDPPCGQNETREDGKIIQLPPCKTGAWIVPAIMACYLLVANILLVNL IAVFNNTFFE  
 VKSISNQVWKFQRYQLIMTFHERPVLPPPLIIFSHMTMIFQHLCCRWRKHESDPDERDYGLKLFITDDEL  
 KKVHDFEEQCIEEYFREKDDRFNSSNDERIRVTSERVENMSMRLEE VNEREHSMKASLQTVDIRLAQLED  
 LIGRMATALERLTGLERAESNKIRSRTSSDCTDAAYIVRQSSFN SQEGNTFKLQESIDPAGEETMSPTSP  
 TLMPRMRSHSFYSVNMKDKGGIEKLESIFKERSLSLHRATSSHSVAKEPKAPAAPANTLAIVPDSRRPSS  
 CIDIYVSAMDELHCDIDPLDNSVNILGLGEP SFSTPVPSTAPSSSAYATLAPTDRPPSRSIDFEDITSMD  
 TRSFSSDYTHLPECQNPWDEPPMYHTIERSKSSRYLATTPFLLEEAPIVKS HSFMFSPSRSYANFGVP  
 VKTAEYTSITDCIDTRCVNAPQAIADRAAFP GGLGDKVEDLTCCHPERE AELSHPSSDSEENAKGRRAT  
 IAISSQEGD NSERTLSNNITVPKIERANSYSAEEPSAPYAHRKSF SISKLD RQRNTASLRNPFQRSKS  
 SKPEGRGDSL MRRLSRTSAFQSFESKH N

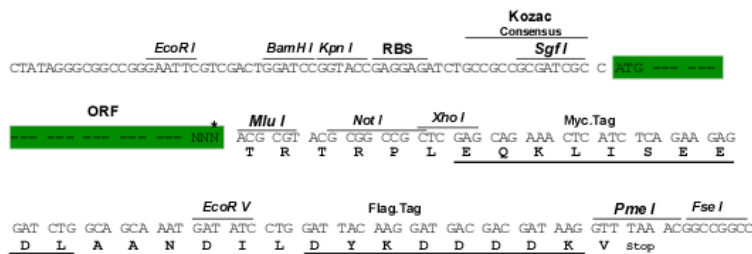
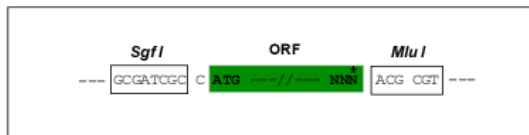
TRTRPLEQKLISEEDLAANDILDYKDDDDKV

Restriction Sites:

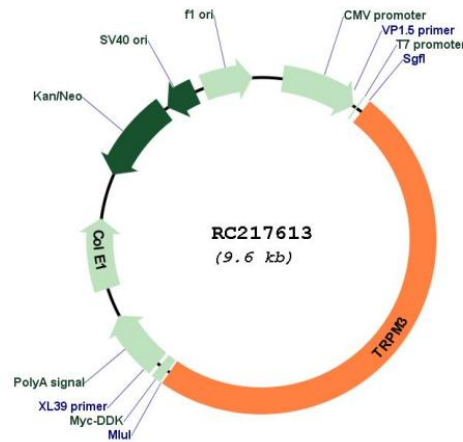
SgfI-MluI

Cloning Scheme:

Cloning sites used for ORF Shuttling:



\* The last codon before the Stop codon of the ORF

**Plasmid Map:**


**ACCN:** NM\_206947

**ORF Size:** 4707 bp

**OTI Disclaimer:** The molecular sequence of this clone aligns with the gene accession number as a point of reference only. However, individual transcript sequences of the same gene can differ through naturally occurring variations (e.g. polymorphisms), each with its own valid existence. This clone is substantially in agreement with the reference, but a complete review of all prevailing variants is recommended prior to use. [More info](#)

**OTI Annotation:** This clone was engineered to express the complete ORF with an expression tag. Expression varies depending on the nature of the gene.

**Components:** The ORF clone is ion-exchange column purified and shipped in a 2D barcoded Matrix tube containing 10ug of transfection-ready, dried plasmid DNA (reconstitute with 100 ul of water).

**Reconstitution Method:**

1. Centrifuge at 5,000xg for 5min.
2. Carefully open the tube and add 100ul of sterile water to dissolve the DNA.
3. Close the tube and incubate for 10 minutes at room temperature.
4. Briefly vortex the tube and then do a quick spin (less than 5000xg) to concentrate the liquid at the bottom.
5. Store the suspended plasmid at -20°C. The DNA is stable for at least one year from date of shipping when stored at -20°C.

**RefSeq:** [NM\\_206947.4](#)

RefSeq Size:	5985 bp
RefSeq ORF:	4710 bp
Locus ID:	80036
Cytogenetics:	9q21.12-q21.13
Protein Families:	Druggable Genome, Ion Channels: Transient receptor potential, Transmembrane
MW:	179.1 kDa
Gene Summary:	<p>The product of this gene belongs to the family of transient receptor potential (TRP) channels. TRP channels are cation-selective channels important for cellular calcium signaling and homeostasis. The protein encoded by this gene mediates calcium entry, and this entry is potentiated by calcium store depletion. Alternatively spliced transcript variants encoding different isoforms have been identified. [provided by RefSeq, Jul 2008]</p>