

Product datasheet for RC217609

LRP4 (NM_002334) Human Tagged ORF Clone

Product data:

Product Type:	Expression Plasmids
Product Name:	LRP4 (NM_002334) Human Tagged ORF Clone
Tag:	Myc-DDK
Symbol:	LRP4
Synonyms:	CLSS; CMS17; LRP-4; LRP10; MEGF7; SOST2
Mammalian Cell Selection:	Neomycin
Vector:	pCMV6-Entry (PS100001)
E. coli Selection:	Kanamycin (25 ug/mL)
ORF Nucleotide Sequence:	>RC217609 representing NM_002334 Red=Cloning site Blue=ORF Green=Tags(s)

TTTTGTAATACGACTCACTATAGGGCGGCCGGAATTCGTCGACTGGATCCGGTACCGAGGAGATCTGCC
GCC**CGATCGCC**

ATGAGGCGGCAGTGGGGCGCGTCTGCTTGGCGCCCTGCTCTGCGCACACGGCCTGGCCAGCAGCCCCG
AGTGTGCTTGTGGTGGGAGCCACTTCACATGTGCAGTGAGTGTCTTGGAGAGTGTACCTGCATCCCTGC
CCAGTGGCAGTGTGATGGAGACAATGACTGCGGGGACCACAGCGATGAGGATGGATGATACTACCTACC
TGTTCCCCTCTTGACTTCACTGTGACAATGGCAAGTGCATCCGCCGCTCCTGGGTGTGTGACGGGGACA
ACGACTGTGAGGATGACTCGGATGAGCAGGACTGTCCCCCGGGAGTGTGAGGAGGACGAGTTCCCTG
CCAGAATGGCTACTGCATCCGGAGTCTGTGGCACTGCGATGGTGACAATGACTGTGGCGACAACAGCGAT
GAGCAGTGTGACATGCGCAAGTGTCCGACAAGGAGTTCCGCTGTAGTGACGGAAGCTGCATTGCTGAGC
ATTGGTACTGCGACGGTGACACCGACTGCAAAAGATGGCTCCGATGAGGAGAACTGTCCCTCAGCAGTGCC
AGCGCCCCCTGCAACCTGGAGGAGTCCAGTGTGCCTATGGACGCTGCATCCTCGACATCTACCACTGC
GATGGCGACGATGACTGTGGAGACTGGTCAGACGAGTCTGACTGCTCCTCCCACAGCCCTGCCGCTCTG
GGGAGTTCATGTGTGACAGTGGCCTGTGCATCAATGCAGGCTGGCGCTGCGATGGTGACGCGGACTGTGA
TGACCAGTCTGATGAGCGCAACTGCACCACCTCCATGTGTACGGCAGAACAGTCCGCTGTCACTCAGGC
CGCTGTGTCGGCCTGCTGGCGCTGTGATGGGGAGGACGACTGTGCAGACAACAGCGATGAAGAGAACT
GTGAGAATACAGGAAGCCCCAATGTGCCTTGGACCAGTTCCTGTGTTGGAATGGGCGCTGCATTGGGCA
GAGGAAGCTGTGCAACGGGGTCAACGACTGTGGTGACAACAGCGACGAAAGCCACAGCAGAATTGCCGG
CCCCGGACGGGTGAGGAGAACTGCAATGTTAAACAAGGTGGTGTGCCAGAAAGTCCAGATGGTGCGGG
GGGAGTGCAGTGTACCTGCCACACAGGCTACCGGCTCACAGAGGATGGGCACACGTGCCAAGATGTGAA
TGAATGTGCCGAGGAGGGATTGACAGCCAGGGCTGCACCAACAGCGAAGGGGCTTTCCAATGCTGGTGT
GAAACAGGCTATGAACTACGGCCCGACCGCGCAGCTGCAAGGCTCTGGGGCCAGAGCCTGTGCTGCTGT
TCGCCAATCGCATCGACATCCGGCAGGTGCTGCCACACCGCTCTGAGTACACACTGCTGTTAAACAACCT
GGAGAATGCCATTGCCCTTGATTTCCACCACCGCCGCGAGCTTGTCTTGGTCAGATGTCACCCTGGAC



[View online >](#)

CCGATCCTCCGTGCCAACCTCAACGGCAGCAACCTGGAGGAGGTTGTGTCTACTGGGCTGGAGAGCCCAG
 GGGCCTGGCTGTGGATTGGGTCCATGACAACTCTACTGGACCGACTCAGGCACCTCGAGGATTGAGGT
 GGCAATCTGGACGGGGCCACCAGGAGGTGTTGCTGTGGCAGAACCTGGAGAAGCCCCGGGCCATTGCC
 TTGCATCCCATGGAGGGTACCATTTACTGGACAGACTGGGCAACACCCCCCGTATTGAGGCCTCCAGCA
 TGGATGGCTCTGGACGCCGCATCATTGCCGATACCCATCTTCTGGCCAAATGGCCTCACCATCGACTA
 TGCCGGGGCCCGTATGTACTGGGTGGATGCTAAGCACCATGTCATCGAGAGGGCCAATCTGGATGGGAGT
 CACCGTAAGGCTGTCATTAGCCAGGGCCTCCCGCATCCCTTCGCCATCACAGTGTGTAAGACAGCCTGT
 ACTGGACAGACTGGCACACCAAGAGCATCAATAGCGCTAACAAATTTACGGGGAAGAACCAGGAAATCAT
 TCGCAACAACTCCAATTCCCTATGGACATCCACACCTTGACCCCCAGCGCCAACCTGCAGGAAAAAC
 CGCTGTGGGGACAACAACGGAGGCTGCACGCACCTGTGTCTGCCAGTGGCCAGAACTACACCTGTGCCT
 GCCCACTGGCTTCCGCAAGATCAGCAGCCAGCCTGTGCCAGAGTCTTGACAAGTTCTGCTTTTTGC
 CCGAAGGATGGACATCCGTGAATCAGCTTTGACACAGAGGACCTGTCTGATGATGTCATCCCACTGGCT
 GACGTGCGCAGTGTGTGCCCTTACTGGGACTCCCGGATGACCACGTGTACTGGACAGATGTCAGCA
 CTGATACCATCAGCAGGGCCAAGTGGGATGGAACAGGACAGGAGTGGTAGTGGATACCAGTTTGGAGAG
 CCCAGCTGGCCTGGCCATTGATTGGGTACCAACAACTGTACTGGACAGATGCAGGTACAGACCGGATT
 GAAGTAGCCAACACAGATGGCAGCATGAGAACAGTACTCATCTGGGAGAACCTTGATCGTCTCGGGACA
 TCGTGGTGAACCCATGGCGGGTACATGTATTGGACTGACTGGGGTGGCAGCCCCAAGATTGAACGAGC
 TGGCATGGATGCCTCAGGCCGCCAAGTCATTATCTTCTAATCTGACCTGGCCTAATGGTTAGCTATT
 GATTATGGGTCCCAGCGTCTATACTGGGCTGACGCCGGCATGAAGACAATTGAATTTGCTGGACTGGATG
 GCAGTAAGAGGAAGGTGCTGATTGGAAGCCAGTCCCCACCCATTTGGGCTGACCTCTATGGAGAGCG
 CATCTATTGGACTGACTGGCAGACCAAGAGCATACAGAGCGTACCAGGCTGACAGGGCTGGACCGGGAG
 ACTCTGCAGGAGAACCTGAAAACTAATGGACATCCATGTCTTCCACCGCCCGGGCCCCAGTGTCTA
 CACCATGTGCTATGGAGAATGGCGGCTGAGCCACCTGTGTCTTAGTCCCAAACTCAAGCGGATTCAG
 CTGTACCTGCCACAGGCATCAACCTGTGTCTGATGGCAAGACCTGCTCACCAGGCATGAACAGTTTC
 CTCATCTTCCAGGAGGATAGACATTCGCATGGTCTCCCTGGACATCCCTTATTTTGTGATGTGGTGG
 TACCAATCAACATTACCATGAAGAACACCATGGCGTTGGAGTAGACCCAGGAAGGAAAGGTGACTG
 GTCTGACAGCAGACTGCACAGGATCAGTCGTGCCAATCTGGATGGCTCACAGCATGAGGACATCATCACC
 ACAGGGCTACAGACCACAGATGGGCTCGCGTTGATGCCATTGGCCGAAAGTACTGGACAGACACGG
 GAACAAACCGGATTGAAGTGGGCAACCTGGACGGTCCATGCGGAAAGTGTGGTGTGCAGAACCTTGA
 CAGTCCCCGGCCATCGTACTGTACCATGAGATGGGTTTATGTACTGGACAGACTGGGGGAGAATGCC
 AAGTTAGAGCGGTCCGGAATGGATGGCTCAGACCGCGGTTGCTCATCAACAACAACCTAGGATGGCCCA
 ATGGACTGACTGTGGACAAGGCCAGTCCCAACTGCTATGGGCCGATGCCACACCGAGGCAATTGAGGC
 TGCTGACCTGAATGGTGCCAATCGGCATACATTGGTGTACCCGGTGCAGCACCCATATGGCCTCACCTG
 CTCGACTCCTATATCTACTGGACTGACTGGCAGACTCGGAGCATCCACCGTGTGACAAGGGTACTGGCA
 GCAATGTCATCCTCGTGAGGTCCAACCTGCCAGGCCTCATGGACATGCAGGCTGTGGACCGGGCAGACC
 ACTAGGTTTTAACAGTGCAGCTCGAGAAATGGCGGCTGCTCCCACCTCTGCTTGCCCTCGGCCTTCTGGC
 TTCTCTGTGCCTGCCCCACTGGCATCCAGCTGAAGGGAGATGGGAAGACCTGTGATCCCTCTCTGAGA
 CCTACCTGCTCTTCTCCAGCCGTGGCTCCATCCGGCGTATCTACTGGACACCAAGTACCACACCGATG
 GCATGTCCCTGTCTGAGCTCAACAATGTCATCTCCCTGGACTATGACAGCGTGGATGGAAAGGCTAT
 TACACAGATGTGTTCTGGATGTTATCAGGCGAGCAGACCTGAACGGCAGCAACATGGAGACAGTATCG
 GGCGAGGGCTGAAGACCACTGACGGGCTGGCAGTGGACTGGTGGCCAGGAACCTGTACTGGACAGACAC
 AGGTGCAAAATACCATTGAGGCGTCCAGGCTGGATGGTTCTGCCGAAAGTACTGATCAACAATAGCCTG
 GATGAGCCCCGGGCCATTGCTGTTTTCCAGGAAGGGTACCTCTTCTGGACAGACTGGGGCCACATTG
 CCAAGATCGAACGGGCAAACTGGATGGTTCTGAGCGAAGGTCTCATCAACACAGACCTGGGTTGGCC
 CAATGGCCTTACCCTGGACTATGATACCCGAGGATCTACTGGGTGGATGCGCATCTGGACCGGATCGAG
 AGTGTGACCTCAATGGGAACTGCGGCAGGTCTTGGTCGGCCATGTGTCCACCCCTTTGCCCTCACAC
 AGCAAGACAGGTGGATCTACTGGACAGACTGGCAGACCAAGTCAATCCAGCGTGTGACAAATACTCAGG
 CCGGAACAAGGAGACAGTGTGGCAAATGTGGAAGGACTCATGGATATCATCGTGGTTTCCCTCAGCGG
 CAGACAGGGACCAATGCCTGTGGTGTGAACAATGGTGGCTGCACCCACCTCTGCTTTGCCAGAGCCTCGG
 ACTTCGTATGTGCCTGTCTGACGAACCTGATAGCCAGCCTGCTCCCTGTGCCTGGCCTGGTACCACC
 AGCTCCTAGGGCTACTGGCATGAGTGAAAAGAGCCAGTGTACCCAACACACCCTACCACCTTGTAT
 TCTTCAACCACCCGACCCGACGTCTCTGGAGGAGTGGAAAGGAAGTGTCTGAAAGGGATGCCAGGC

TGGGCCTCTGTGCACGTTCCAATGACGCTGTTCTCTGCTGCTCCAGGGGAAGGACTTCATATCAGCTACGC
 CATTGGTGGACTCCTCAGTATTCTGCTGATTTTGGTGGTATTGCAGCTTTGATGCTGTACAGACACAAA
 AAATCCAAGTTCCTGATCTGGAATGGGGAACCTCACCTACAGCAACCCCTCTACCGAACATCCACAC
 AGGAAGTGAAGATTGAAGCAATCCCCAAACCAGCCATGTACAACCAGCTGTGCTATAAGAAAAGAGGGAGG
 GCCTGACCATAACTACACCAAGGAGAAGATCAAGATCGTAGAGGGAATCTGCCTCTGTCTGGGGATGAT
 GCTGAGTGGGATGACCTCAAGCAACTGCGAAGCTCACGGGGGGGCTCCTCCGGGATCATGTATGCATGA
 AGACAGACACGGTGTCCATCCAGGCCAGCTCTGGCTCCCTGGATGACACAGAGACGGAGCAGCTGTTACA
 GGAAGAGCAGTCTGAGTGTAGCAGCGTCCATACTGCAGCCACTCAGAAAAGACGAGGCTCTCTGCCAGAC
 ACGGGCTGAAAACATGAACGCAAGCTCTCTCAGAGAGCCAGGTC

ACGCGTACGCGGCCGCTCGAGCAGAACTCATCTCAGAAGAGGATCTGGCAGCAAATGATATCCTGGATT
 ACAAGGATGACGACGATAAGGTTTAA

Protein Sequence:

>RC217609 representing NM_002334
 Red=Cloning site Green=Tags(s)

MRRQWGALLL GALLCAHGLASSPECACGRSHFTCAVSALGECTCIPAQWQCDGNDNDCGDHSDGDCILPT
 CSPLDFHCDNGKCI RRSWVCDGNDCEDDSDQDCPPRECEDEFPCQNGYCI RSLWHCDGNDNDCGNSD
 EQCDMRKCSDFRCSDGSCIAEHWYCDGDTDCDGSDEENCPSAVPAPPCNLEEFQCA YGR CILD IYHC
 DGDDDCGDWSDSDCSSHQPCRSGEFMCDSGLCINAGWRCDGDADCDQSDERNCTTSMCTAEQFRCHSG
 RCVRLSWRCDEDDCADNSDEENCENTGSPQCALDQFLCWNGRCIGQRKLCNGVNDGDNSESPQONCR
 PRTGEENCNVNNGCAQKCMVRGAVQCTCHTGYRLTEDGHTCQDVNECAEEGYCSQGCTNSEGAFQCWC
 ETGYELRPDRRCKALGPEPVLLFANRIDIRQVLP HRSEYTL LNLNLENAIALDFHHRREL VFWSDVTL D
 RILRANLNGSNVEEVVSTGLESPGGLAVDWVHDKLYWTD SGT SRIEVANLDGAHRKVL L WQNL EK PRAIA
 LHPMEGTIYWDWGNTPRIEASSMDGSGRRIIADTHLFWP NGLTIDYAGRRMYWDAKHVIERANLDGS
 HRKAVISQGLPHPF AITVFEDSLYWDWHTKSI NSANKFTGKNQEIIRNKLHFPMDIHTLHPQRQPA GKN
 RCGDNNGGCTHLCLPSGQNYTCACTGFRKISSHACAQSLDKFLLFARRMDIRRI SFDTEDLSDDDVIPLA
 DVRSVAVALDWDSDRDHVYWDVSTDTISRAKWDGTGQEVVVDTSLESPAGLAIDWVTNKL YWTDAGTDRI
 EVANTDGSMTVL IWENLDRPRDIVVEPMGGYMYWTDWGASPKIERAGMDASGRQVIISSNL TWP NGLAI
 DYGSRQLYWADAGMKTIEFAGLDGSKRKVLIGSQLPHPFGLTYGERIYWTDWQTKSIQSADRL TGLDRE
 TLQENLENLMDIHVFHRRRPPVSTPCAMENGGCSHLCLRSPNPSGF SCTCPTGINLLSDGKTCSPGMNSF
 LIFARRIDIRMVSLDIPYFADVVPINITMKNITAVGVDPQEGKYWSDSTLHRI SRANLDGSQHEDIIT
 TGLQTTDGLAVDAIGRKVYWDTGTNRIEVGNLDGSMRKVLVWQNL DSPRAIVLYHEMGFMYWTDWGENA
 KLERSGMDGSDRAVL INNNL GWP NGLTVDKASSQLLWADAHTERIEAADLNGANRHTLVSPVQHPYGLTL
 LDSYIYWDWQTRS IHRADKGTGSNVILVRSNLPGLMDMQAVDRAQPLGFNKCGRNGGCSHLCLPRPSG
 FSCACPTGIQLKGDGKTCDPSPETYLLFSSRGSIRRI SLDTS DHTDVHVPVPELNNVISLDYDSVDGKVV
 YTDVFLDVIRRADLNGSNMETVIGRGLKTTDGLAVDWVARNLYWTD TGRNTIEASRLDGSCRKVL INNSL
 DEPRAIAVFPKGYLFWTDWGHIAKIERANLDGSERKVLINTDLGWP NGLTLDYDTRRIYWVDAHLDRIE
 SADLNGKLRQVLVGHVSHPFALTQQDRWIYWDWQTKSIQRVDKYSGRNKETVLANVEGLMDIIVVSPQR
 QTGTNACGVNNGGCTHLCFARASDFVCACPDEPDSQPCSLVPGLVPPAPRATGMSEKSPVLPNTPTTLY
 SSTTRTRTSLEEVEGRCSERDARLGLCARSNDAVPAAPGEGHLISYAIGLLSILLILVVAALMLYRHK
 KSKFTDPGMNLTYSNPSYRTSTQEVKIEAIPKAMYNL CYKKEGGPDHNYTKEIKIVEGICLLSGDD
 AEWDDLKQLRSSRGLLRDHVCMKTDTVS IQASSGSLDDTETEQLLQEEQSECSSVHTAATPERRGSLPD
 TGWKHERKLSSESQV

TRTRPLEQKLISEEDLAANDILDYKDDDDKV

Chromatograms:

https://cdn.origene.com/chromatograms/mg4197_a01.zip

Restriction Sites:

Sgfl-MluI

Cloning Scheme:



ACCN: NM_002334

ORF Size: 5715 bp

OTI Disclaimer: Due to the inherent nature of this plasmid, standard methods to replicate additional amounts of DNA in E. coli are highly likely to result in mutations and/or rearrangements. Therefore, OriGene does not guarantee the capability to replicate this plasmid DNA. Additional amounts of DNA can be purchased from OriGene with batch-specific, full-sequence verification at a reduced cost. Please contact our customer care team at custsupport@origene.com or by calling 301.340.3188 option 3 for pricing and delivery.

The molecular sequence of this clone aligns with the gene accession number as a point of reference only. However, individual transcript sequences of the same gene can differ through naturally occurring variations (e.g. polymorphisms), each with its own valid existence. This clone is substantially in agreement with the reference, but a complete review of all prevailing variants is recommended prior to use. [More info](#)

OTI Annotation: This clone was engineered to express the complete ORF with an expression tag. Expression varies depending on the nature of the gene.

Components: The ORF clone is ion-exchange column purified and shipped in a 2D barcoded Matrix tube containing 10ug of transfection-ready, dried plasmid DNA (reconstitute with 100 ul of water).

Reconstitution Method:

1. Centrifuge at 5,000xg for 5min.
2. Carefully open the tube and add 100ul of sterile water to dissolve the DNA.
3. Close the tube and incubate for 10 minutes at room temperature.
4. Briefly vortex the tube and then do a quick spin (less than 5000xg) to concentrate the liquid at the bottom.
5. Store the suspended plasmid at -20°C. The DNA is stable for at least one year from date of shipping when stored at -20°C.

RefSeq: [NM_002334.4](#)

RefSeq Size: 8076 bp

RefSeq ORF: 5718 bp

Locus ID: 4038

UniProt ID: [O75096](#)

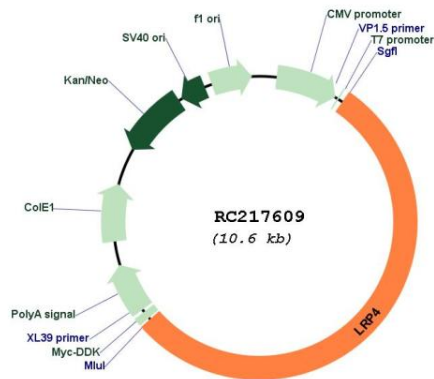
Cytogenetics: 11p11.2

Protein Families: Druggable Genome, Transmembrane

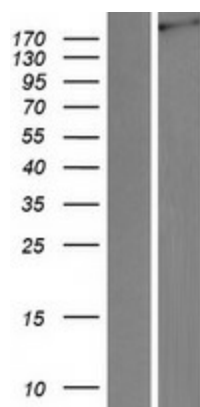
MW: 211.9 kDa

Gene Summary: This gene encodes a member of the low-density lipoprotein receptor-related protein family. The encoded protein may be a regulator of Wnt signaling. Mutations in this gene are associated with Cenani-Lenz syndrome. [provided by RefSeq, May 2010]

Product images:



Circular map for RC217609



Western blot validation of overexpression lysate (Cat# [LY419394]) using anti-DDK antibody (Cat# [TA50011-100]). Left: Cell lysates from untransfected HEK293T cells; Right: Cell lysates from HEK293T cells transfected with RC217609 using transfection reagent MegaTran 2.0 (Cat# [TT210002]).