

## Product datasheet for RC217604

### NCAPH2 (NM\_014551) Human Tagged ORF Clone

#### Product data:

Product Type:	Expression Plasmids
Product Name:	NCAPH2 (NM_014551) Human Tagged ORF Clone
Tag:	Myc-DDK
Symbol:	NCAPH2
Synonyms:	CAPH2
Mammalian Cell Selection:	Neomycin
Vector:	pCMV6-Entry (PS100001)
E. coli Selection:	Kanamycin (25 ug/mL)
ORF Nucleotide Sequence:	>RC217604 representing NM_014551 Red=Cloning site Blue=ORF Green=Tags(s)

TTTTGTAATACGACTCACTATAGGGCGGCCGGAATTCGTCGACTGGATCCGGTACCGAGGAGATCTGCC  
GCC**CGATCGCC**

ATGGAGGACGTGGAGGCGCTTCGCCACCTCTGCAGCCATCCGCGACCTCACCAAGAACTGGGAGG  
TGGACGTGGCGGCCAGCTGGGCGAGTATCTGGAGGAGCTGGATCAGATCTGCATTTCTTTGACGAAGG  
CAAGACCACAATGAACCTCATTGAGGCAGCGTTGTTGATCCAGGGCTCGCCTGCGTCTACAGTAAGAAG  
GTGAATACCTCTACTACTCGTCTACCAGGCCCTTGATTTTCATCTCTGAAAGAGGCGGCCAAGCAGC  
TCTCTTCGGTGCAGGAGGACAGGCCAATGGGGTTGCCAGCTCCGGGTCCCCAGGAGGCAGAGAATGA  
GTTCTGTGCTGGATGACTTCCCTGACTCCCGGACTAACGTGGATCTCAAGAATGATCAGACGCCCACT  
GAGGTCCTCATATCCCCCTCTGCCCATGGCCCTGGTGGCCCTGATGAAATGGAGAAGAACAACAATC  
CCCTGTACAGCCGTCAGGGTGAGGTCTGGCCAGCCGGAAGGATTTGAGGATGAACACGTGCGTTCCCCA  
CCCCAGAGGGGCTTCATGTTGGAGCCAGAGGGCATGTCCCCATGGAACCAGCGGGCGTTTCCCCCATG  
CCAGGGACCCAGAAGGACACCGGGAGGACTGAGGAGCAGCCAATGGAAGTTTCCGTGTGCAGGAGCCCTG  
TCCCAGCACTCGGCTTCTCCCAGGAGCCAGGCCCTCTCCAGAAGGCCGATGCCCTGGGTGGGGCGA  
GGACGAGGATGCAGAGGAGGCAGTAGAGCTTCTGAGGCCTCGGCCCAAGGCCGCTCTGGAGCCCAAG  
GAGTCCAGGAGCCCGCAGCAGGTGGGACCCACATGGAGGCTGCAGAACCTGAGCTG

**ACGCGT**ACGCGGCCGCTCGAGCAGAAACTCATCTCAGAAGAGGATCTGGCAGCAAATGATATCCTGGATT  
ACAAGGATGACGACGATAAGGTTTAA



[View online »](#)

**Protein Sequence:** >RC217604 representing NM\_014551  
Red=Cloning site Green=Tags(s)

MEDVEARFAHLLQPIRDLTKNWEVDVAAQLGEYLEELDQICISFDEGKTTMNFIEAALLIQGSACVYSKK  
 VEYLYSLVYQALDFISGKRRAKQLSSVQEDRANGVASSGVPQEAENEFLSLDDFPDSRTNVDLKNDQTPS  
 EVLIIPLLPALVAPDEMEKNNNPLYSRQGEVLASRKDFRMNTCVPHPRGAFMLEPEGMSPMEPAGVSPM  
 PGTQKDTGRTEEQPMEVSVCRSPVPALGF SQEPGPSPEGPMP LGGGEDEDAEEAVELPEASAPKAALPEK  
 ESRSPQQVGPTWRPAEPEL

TRTRPLEQKLISEEDLAANDILDYKDDDDKV

**Chromatograms:** [https://cdn.origene.com/chromatograms/mk8050\\_e05.zip](https://cdn.origene.com/chromatograms/mk8050_e05.zip)

**Restriction Sites:** SgfI-MluI

**Cloning Scheme:**



**ACCN:** NM\_014551

**ORF Size:** 897 bp

**OTI Disclaimer:** The molecular sequence of this clone aligns with the gene accession number as a point of reference only. However, individual transcript sequences of the same gene can differ through naturally occurring variations (e.g. polymorphisms), each with its own valid existence. This clone is substantially in agreement with the reference, but a complete review of all prevailing variants is recommended prior to use. [More info](#)

**OTI Annotation:** This clone was engineered to express the complete ORF with an expression tag. Expression varies depending on the nature of the gene.

**Components:** The ORF clone is ion-exchange column purified and shipped in a 2D barcoded Matrix tube containing 10ug of transfection-ready, dried plasmid DNA (reconstitute with 100 ul of water).

**Reconstitution Method:**

1. Centrifuge at 5,000xg for 5min.
2. Carefully open the tube and add 100ul of sterile water to dissolve the DNA.
3. Close the tube and incubate for 10 minutes at room temperature.
4. Briefly vortex the tube and then do a quick spin (less than 5000xg) to concentrate the liquid at the bottom.
5. Store the suspended plasmid at -20°C. The DNA is stable for at least one year from date of shipping when stored at -20°C.

**RefSeq:** [NM\\_014551.4](#), [NP\\_055366.3](#)

**RefSeq Size:** 1440 bp

**RefSeq ORF:** 900 bp

**Locus ID:** 29781

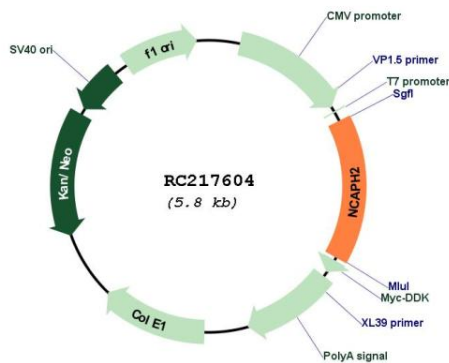
**UniProt ID:** [Q6IBW4](#)

**Cytogenetics:** 22q13.33

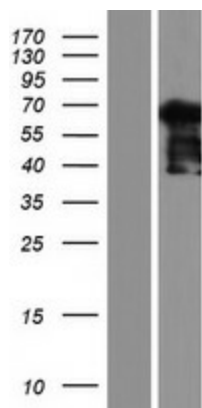
**MW:** 32.6 kDa

**Gene Summary:** This gene encodes one of the non-SMC subunits of the condensin II complex. This complex plays an essential role in mitotic chromosome assembly. Alternate splicing of this gene results in multiple transcript variants.[provided by RefSeq, May 2010]

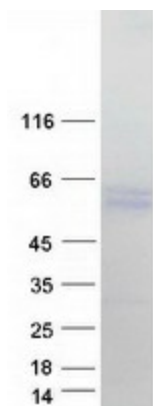
**Product images:**



Circular map for RC217604



Western blot validation of overexpression lysate (Cat# [LY415228]) using anti-DDK antibody (Cat# [TA50011-100]). Left: Cell lysates from untransfected HEK293T cells; Right: Cell lysates from HEK293T cells transfected with RC217604 using transfection reagent MegaTran 2.0 (Cat# [TT210002]).



Coomassie blue staining of purified NCAPH2 protein (Cat# [TP317604]). The protein was produced from HEK293T cells transfected with NCAPH2 cDNA clone (Cat# RC217604) using MegaTran 2.0 (Cat# [TT210002]).