

## Product datasheet for **RC217601**

### **WIPF1 (NM\_003387) Human Tagged ORF Clone**

#### **Product data:**

Product Type:	Expression Plasmids
Product Name:	WIPF1 (NM_003387) Human Tagged ORF Clone
Tag:	Myc-DDK
Symbol:	WIPF1
Synonyms:	PRPL-2; WAS2; WASPIP; WIP
Mammalian Cell Selection:	Neomycin
Vector:	pCMV6-Entry (PS100001)
E. coli Selection:	Kanamycin (25 ug/mL)



[View online »](#)

**ORF Nucleotide Sequence:**

>RC217601 representing NM\_003387  
 Red=Cloning site Blue=ORF Green=Tags(s)

TTTTGTAATACGACTCACTATAGGGCGGCCGGGAATTCGTCGACTGGATCCGGTACCGAGGAGATCTGCC  
 GCC**CGGATCGCC**

ATGCCTGTCCCTCCCCCTCCAGCACCCCGCCGCCCCGACGTTTGCCTGGCCAATACAGAGAAGCCTA  
 CCTTGAATAAGACAGAGCAGGCTGGGAGAAATGCTCTCCTTTCTGATATCAGCAAAGGGAAGAACTAAA  
 GAAGACGGTCACCAATGACAGAAGTGCACCAACTGACAAACCTAAAGGAGCTGGTGGTGGAGGCGGT  
 GGTGGTGGCTTTGGTGGAGGCGCGGATTTGGCGGAGGAGGTGGTGGCGGAGGCGGTGGAAGTTTGGAG  
 GGGGGGACCTCCAGGTCTGGGAGGATTGTTCCAGGCTGGAATGCCAAGCTGAGATCCACGGCCAACAG  
 GGATAATGATTCTGGAGGAAGCCGACCACCATTGTTGCCACCGGGAGGAAGATCCACATCTGCGAAACCC  
 TTTTACCCCAAGTGGCCAGGAGGTTTCTGTGCTTCTCCAGGCCACAGAAGTGGTCCCCCAGAGC  
 CTCAGAGGAACCGAATGCCGCCCAAGGCCGACGTGGGCTCAAAGCCTGATAGCATTCTCTCCAGT  
 ACCTAGTACTCCAAGACCCATTCATCAAGTCTGCACAACCGGGGTCCCACCAGTGCCCGGAGGCCCC  
 AGGCAGCCAGCCCCGGGCCACTCCTCCCCCTTCCCTGGAAACCGCGGCACTGCTTTGGGAGGAGGCT  
 CAATACGTCAGTCCCCCTTGAGCTCCTCCTCGCCCTTCTCCAACCGGCCTCCCCTGCCGCCTACCCCCAG  
 CAGGGCCTTGGATGACAAACCCCTCCACCACCTCCTCCAGTGGGCAACAGGCCCTCCATCCACAGGGAA  
 GCGGTTCCCCCTCCTCCTCCTCAGAACAAAGCCTCCAGTGCCTTCCACTCCGCGGCCTTCGGCCTCCT  
 CACAGGCCACCTCCGCGCCACCTCCAGCAGGCCCGGGCCGCTCCTCTGCCTCAAAGTTCACAGCGG  
 CAATGACGAAACCCCAAGACTCCACAGCGGAATCTGTCCCTCAGTTCGTCACGCCCGGTTACCTTCG  
 CCAGGACGTTCAGTCTCTTCTCCCCGCCAGTGAAGACCCACCTCCAGTGAAGAACCGCAGCACATCTCGG  
 GCCAGCAGGCCCTCCACCACCTCCTCCAGTAAGCAGAAACCGCAGCACATCTCGGCGCTGCCTGC  
 TACCCCTCAGTTGCCATCCAGGAGTGGAGTAGACAGTCCAGGAGTGGACCCAGGCTCCCCTTCTCCT  
 GATAGGCCAGTCTGGGACCTCCCCACCTCCACCATCAACATCTATTAGAAATGGCTTCAAAGACT  
 CTCCATGTGAAGATGAGTGGGAAAGCAGATTCTACTTCCATCCGATTTCCGATTTGCCACCTCCAGAGCC  
 ATATGTACAAACGACCAAAGTTATCCAGCAAACGGCAAGAAACGAAAGCCGGAGTGGATCCAACCGA  
 AGAGAAAGGGGTCTCCACCCTCCTCCATCCCGAGG

**ACGCGT**ACGCGGCCGCTCGAGCAGAAACTCATCTCAGAAGAGGATCTGGCAGCAAATGATATCCTGGATT  
 ACAAGGATGACGACGATAAGGTTTAA

**Protein Sequence:**

>RC217601 representing NM\_003387  
 Red=Cloning site Green=Tags(s)

MPVPPPPAPPPPTFALANTEKPTLNKTEQAGRNALLSDISKGKLLKKTVTNDRSAPILDKPKGAGAGGG  
 GGGFGGGGFSGGGGGGGGSGGGGPPGLGGLFQAGMPKLRSTANRDNDSSGSRPPLPPGGRSTSAKP  
 FSPPSGRFPVPSGHRSGPPEQQRNRMPPRPDVGSKPDSIPPPVPSTPRPIQSSLHNRGSPVPGGP  
 RQPSGPTPPFPNGRTALGGGSIQSPLSSSPFSNRPPLPPTPSRALDDKPPPPPPVGNRPSIHRE  
 AVPPPPQNNKPPVPSTPRPSASSQAPPPPPSRPGPPPLPSSSGNDETPRLPQRNLSLSSSTPPLPS  
 PGRSGPLPPPSERPPPPVRDPPGRSGPLPPPPVSRNGSTSRALPATPQLPSRSGVDSRSGRPPPLPP  
 DRPSAGAPPPPPSTSIIRNGFQDSPACEDEWESRFYFHPISDLPPPEPVVQTTKSYPSKLARNESRSGSNR  
 RERGAPLPPIPR

**TRTRPLEQKLI**SEEDLAANDILDYKDDDDKV

**Chromatograms:**

[https://cdn.origene.com/chromatograms/mk6046\\_d01.zip](https://cdn.origene.com/chromatograms/mk6046_d01.zip)

**Restriction Sites:**

Sgfl-MluI

**Cloning Scheme:**


**ACCN:** NM\_003387

**ORF Size:** 1509 bp

**OTI Disclaimer:** The molecular sequence of this clone aligns with the gene accession number as a point of reference only. However, individual transcript sequences of the same gene can differ through naturally occurring variations (e.g. polymorphisms), each with its own valid existence. This clone is substantially in agreement with the reference, but a complete review of all prevailing variants is recommended prior to use. [More info](#)

**OTI Annotation:** This clone was engineered to express the complete ORF with an expression tag. Expression varies depending on the nature of the gene.

**Components:** The ORF clone is ion-exchange column purified and shipped in a 2D barcoded Matrix tube containing 10ug of transfection-ready, dried plasmid DNA (reconstitute with 100 ul of water).

**Reconstitution Method:**

1. Centrifuge at 5,000xg for 5min.
2. Carefully open the tube and add 100ul of sterile water to dissolve the DNA.
3. Close the tube and incubate for 10 minutes at room temperature.
4. Briefly vortex the tube and then do a quick spin (less than 5000xg) to concentrate the liquid at the bottom.
5. Store the suspended plasmid at -20°C. The DNA is stable for at least one year from date of shipping when stored at -20°C.

**RefSeq:** [NM\\_003387.5](#)

**RefSeq Size:** 4605 bp

**RefSeq ORF:** 1512 bp

**Locus ID:** 7456

**UniProt ID:** [O43516](#)

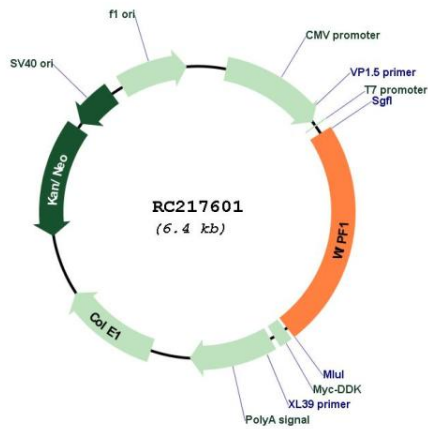
**Cytogenetics:** 2q31.1

**Domains:** WH2

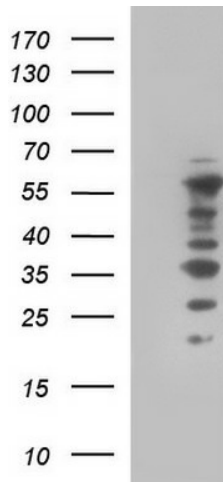
**MW:** 51.1 kDa

**Gene Summary:** This gene encodes a protein that plays an important role in the organization of the actin cytoskeleton. The encoded protein binds to a region of Wiskott-Aldrich syndrome protein that is frequently mutated in Wiskott-Aldrich syndrome, an X-linked recessive disorder. Impairment of the interaction between these two proteins may contribute to the disease. Two transcript variants encoding the same protein have been identified for this gene. [provided by RefSeq, Jul 2008]

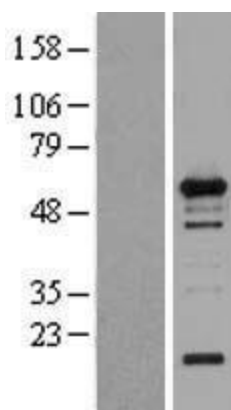
**Product images:**



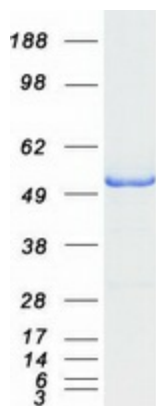
Circular map for RC217601



HEK293T cells were transfected with the pCMV6-ENTRY control (Cat# [PS100001], Left lane) or pCMV6-ENTRY WIPF1 (Cat# RC217601, Right lane) cDNA for 48 hrs and lysed. Equivalent amounts of cell lysates (5 ug per lane) were separated by SDS-PAGE and immunoblotted with anti-WIPF1 (Cat# [TA590158]). Positive lysates [LY401163] (100ug) and [LC401163] (20ug) can be purchased separately from OriGene.



Western blot validation of overexpression lysate (Cat# [LY401163]) using anti-DDK antibody (Cat# [TA50011-100]). Left: Cell lysates from untransfected HEK293T cells; Right: Cell lysates from HEK293T cells transfected with RC217601 using transfection reagent MegaTran 2.0 (Cat# [TT210002]).



Coomassie blue staining of purified WIPF1 protein (Cat# [TP317601]). The protein was produced from HEK293T cells transfected with WIPF1 cDNA clone (Cat# RC217601) using MegaTran 2.0 (Cat# [TT210002]).