

Product datasheet for **RC217596**

E2F7 (NM_203394) Human Tagged ORF Clone

Product data:

Product Type:	Expression Plasmids
Product Name:	E2F7 (NM_203394) Human Tagged ORF Clone
Tag:	Myc-DDK
Symbol:	E2F7
Mammalian Cell Selection:	Neomycin
Vector:	pCMV6-Entry (PS100001)
E. coli Selection:	Kanamycin (25 ug/mL)



[View online »](#)

**ORF Nucleotide
Sequence:**

>RC217596 representing NM_203394
 Red=Cloning site Blue=ORF Green=Tags(s)

TTTTGTAATACGACTCACTATAGGGCGGCCGGAATTCGTCGACTGGATCCGGTACCGAGGAGATCTGCC
 GCC**CGATCGCC**

ATGGAGGTAAATTGTTTAACTAAAAGACCTGATCAGCCCCAGGCAGCCAGACTAGATTTTCAGTTG
 AAGATGGGAAAAATGCACAAAAGGAAAAATATTTTGTGATCGATCAAGGATGGCCCCGAAGACTCCAAT
 AAAAAATGAACCAATTGATTTATCGAAGCAAAAAAATTTACTCCAGAAAGAAATCCATTACTCCAGTT
 AAGCTTGTGACAGACAGCAAGCGGAACCATGGACACCCACAGCTAACCTGAAGATGCTCATTAGTGCTG
 CCAGCCCAGATATAAGGGACCGGAGAAGAAAAAGGGACTATTCCGACCCATTGAAAACAAGGACGATGC
 ATTTACAGATTCTACAGCTTGTGTTGTTGGGACAGTGTGTGGACGAATTTGAAAAGCAAAGGCCA
 AGCAGAAAACAGAAAAGTTTAGGACTCCTGTGCCAGAAGTTTCTAGCTCGCTATCCAAGTTATCCCTTGT
 CAACTGAGAAAACCTCCTCCTAGATGAAGTTGCTGTGAGTCTTGGTGTGAAAAGGAGACGCATCTA
 TGACATTTGAAAATGTGCTGGAGTCGCTGCATCTGGTCAGCCGGGTGGCTAAGAATCAGTATGGCTGGCAT
 GGACGGCACAGCCTGCCAAAACCTGAGGAACCTCCAGAGACTAGGAGAGGAGCAGAAAATGAAGAGC
 AAATGGCTACCTCCAACAGAAAGAGCTGGACCTGATAGATTATAAATTTGGAGAACGTAAGAAAGATGG
 TGATCCAGATTCCAGGAACAACAGTTACTGGATTTCTCTGAACCCGACTGTCCCTTCTCATCTGCAAAAC
 AGTAGAAAAGACAAGTCTCTGAGAATTATGAGCCAGAAGTTTGTGATGCTGTTCCCTCGTCTCAAAAACCA
 AGATTGCTACTCTGGATGTGGCTGCCAAAATACTGATAGAAGAAAGCCAAGATGCCCCGGACCATAGTAA
 ATTTAAAACAAAGGTACGACGCCTCTATGACATAGCCAATGTTCTGACCAGCTTGGCTCTGATAAAGAAA
 GTGCATGTAACAGAAGAGCGAGGTCGTAACCAGCCTTCAAGTGGATCGGGCCTGTGGACTTCAGCTCAA
 TGATGAAGAAGTGGTGGATGTTTCTGCATCTGTCTTACCAGAATTGAAAAGAGAAAACATATGGCCAGT
 TCAAGTCTGTGCAAAAACAGAAGCTGGCTCGCCATGGTTCTTTTAAACACAGTTCAAGCTTCTGAGAGGATC
 CAGAGGAAAGTGAAGTCAAGAACGAGCAGCCCGTACAGAGAAGAACAAGGATCAGGTGGCTACTCTTTAG
 AAATTGGAAGCCTGGCAGCTGTCTATAGACAGAAAATAGAAGACAATTCACAGGGAAAAGCCTTTGCCAG
 TAAGAGAGTGGTGCCTCCATCAAGCAGCTTGGACCCTGTTGCTCCTTTCCCTGCTCTCTGTTGACCCA
 GAATATTGTGTTAATCCTTTAGCCACCCAGTATTTTCTGTTGCTCAGACGGACCTGCAGGCATTCTCCA
 TGCAGAACGGTCTGAATGGACAAGTGGATGTCTCACTTGTCTCTGACGCCTCTGCTGTGGAGAGCCTGAA
 GCCAGCACTCCTGCTGGCCAGCCTCTAGTGTATGTGCCCTCTGCCTCACTGTTCTGCTGTATGGAAGT
 CTGACGAGGGACAGCGTCAAGGTCAAGGTCAAGAGGGATGACAGAAGCTCAGAAGCCCCAGCCACAG
 TAGAGCTGTCTGACCCCTCAGCTCAGAAGCGCCTCTGTGAGGAGAGGAAACCTCAGGAGGAGGATGA
 GCCAGCCACTAAAAGGCAAGTAGGGAATATGAAGACGGCCCGCTGTCGCTTGTGATGCCAAGAACC
 TCAGATCCACAGACCTTGCTCTCCAAAGACTATGGGTAACAGGGCATCTATACCCCTCAAAGACATTC
 ATGTGAATGGCAACTCCCTGCTGCAGAAGAGATTTCAAGAAAGGCAACAGCAAACCTCTCTGTTTCTTC
 TGAGTGGGAAATCCTTCAAGAAATACAGATGTTGAAAAGCCTTCAAAGAAAATGAAAGCACCAAAGAG
 CCTTCTTTGCTACAATATCTTTGTGTGAGTCTCCTGCAGGATTAATGGTTTCAATGACTTTTATCTG
 GCAGTCAAACCCCCCTACTGTGGGCCGCTCCTCAGGTCAGCTGCCGCTTTTCAAGTGTCCCTTGCATGGT
 CTTACCATCTCCACCTCTGGGCCCTTTTCTGTTCTCTATTCTCCTGCAATGCCGGGCCCGTTTCTTCT
 ACTCTTGGTGTCTCCAAACACAGGACCTGTGAATTTCAAGCTTGCCTGGCCTTGATCAATAGCCAGC
 TTCTCGTCGGCCCCACAGCTGTGGTTAATCCAAGTCTCCACACTCCCTTCTGCAGACCTCAGCTTCA
 GAGTCAGCCCTCACTAAACCTAAGTCCAGTGTGTCAAGGTACACAGTGTGTCCTCAACAACCTGAGTCC
 CCCGTTTACGTGGGACATCCAGTCTCAGTAGTAAATACATCAGTCACCAGTTCAGTACCCCAAGA
 GCATCCAACGCACACATCGTGAGACGTTTTTCAAGACACCCGGCAGCCTTGGAGACCTGTCTGAAGAG
 AAGAGAAAGGAACAGTACGAAACACCAGCTCGGCCAGAGGAGACTAGAAATCCCAGCGGGCGCT
 GAC

ACGCGTACGCGGCCGCTCGAGCAGAAACTCATCTCAGAAGAGGATCTGGCAGCAAATGATATCCTGGATT
 ACAAGGATGACGACGATAAAGTTTAA

Protein Sequence: >RC217596 representing NM_203394
Red=Cloning site Green=Tags(s)

```
MEVNCLTLKDLISPRQPRLDFAVEDGENAQKENIFVDRSRMAPKTPIKNEPIDLSKQKFTPERNPITPV
KLVDRQQAEPWPTANLKMLISAASPDIRDREKKKGLFRPIENKDDAFTDSLQLDQVVGDSAVDEFEKQRP
SRKQKSLGLLCCQKFLARYPSYPLSTEKTTISLDEVAVSLGVERRRIYDINVVLESLHLVSRVAKNQYQWH
GRHSLPKTLRNLQRLGEEQKYEEQMAYLQKQKELDLIDYKFGERRKDGDPDSQEQQLLDFSEPDPCSSAN
SRKDKSLRIMSQKFMVFLVSKTKIVTLDVAAKILIEESQDAPDHSKFKTKVRRLYDIANVLTSLALIKK
VHVTEERGRKPAFKWIGPVDFSSSDEELVDVSASVLPKRETYGQIQVCAKQKLARHGSFNTVQASERI
QRKVNSESPSPYREEQSGGYSLEIGSLAAVYRQKIEDNSQKAFASKRVVPPSSSLDPVAPFPVLSVDP
EYCVNPLAHPVFSVAQTDLQAFSMQNLNGQVDVSLASAASAVESLKPALLAGQPLVYVPSASLFMLYGS
LQEGPASGSGSERDDRSSEAPATVELSSAPSAQKRLCEERKPQEEDPATKRQSRREYEDGPLSLVMPKPK
SDSTDLASPMTMGNRASIPKDIHVNGQLPAAEEISGKATANLSVSEWGNPSRNTDVEKPSKENESTKE
PSLLQYLQVQSPAGLNGFNVLVSGSQTPTVGPSSGQLPSFSVPCMVLPSPPLGPFVLYSPAMPGPVSS
TLGALPNTGPVNFSLPGLGSIAQLLVGPTAVVNPKSSTLPSADPQLQSQPSLNLSPVMSRSHSVVQQPES
PVYVGHVPVSVVKLHQSPVPVTPKSIQRTHRETFKTPGSLGDPVLKRRERNQSRNTSSAQRRLIIPSGGA
D
```

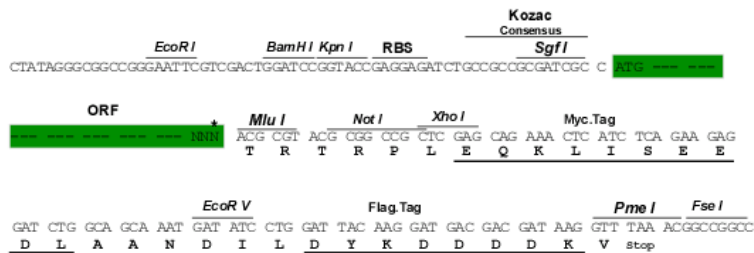
TRTRPLEQKLISEEDLAANDILDYKDDDDKV

Chromatograms: https://cdn.origene.com/chromatograms/mk8015_b09.zip

Restriction Sites: SgfI-MluI

Cloning Scheme:

Cloning sites used for ORF Shuttling:

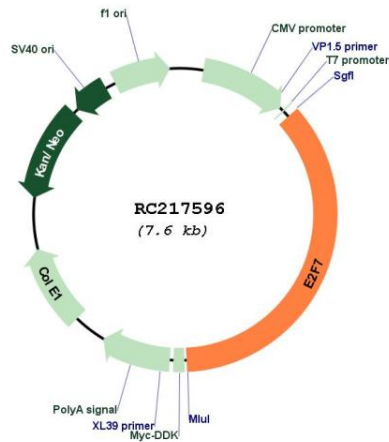


* The last codon before the Stop codon of the ORF

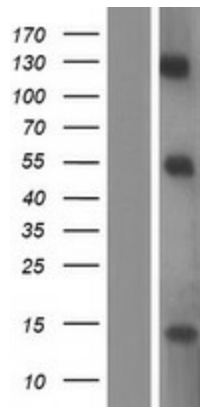
ACCN: NM_203394

ORF Size:	2733 bp
OTI Disclaimer:	The molecular sequence of this clone aligns with the gene accession number as a point of reference only. However, individual transcript sequences of the same gene can differ through naturally occurring variations (e.g. polymorphisms), each with its own valid existence. This clone is substantially in agreement with the reference, but a complete review of all prevailing variants is recommended prior to use. More info
OTI Annotation:	This clone was engineered to express the complete ORF with an expression tag. Expression varies depending on the nature of the gene.
Components:	The ORF clone is ion-exchange column purified and shipped in a 2D barcoded Matrix tube containing 10ug of transfection-ready, dried plasmid DNA (reconstitute with 100 ul of water).
Reconstitution Method:	<ol style="list-style-type: none">1. Centrifuge at 5,000xg for 5min.2. Carefully open the tube and add 100ul of sterile water to dissolve the DNA.3. Close the tube and incubate for 10 minutes at room temperature.4. Briefly vortex the tube and then do a quick spin (less than 5000xg) to concentrate the liquid at the bottom.5. Store the suspended plasmid at -20°C. The DNA is stable for at least one year from date of shipping when stored at -20°C.
Note:	Plasmids are not sterile. For experiments where strict sterility is required, filtration with 0.22um filter is required.
RefSeq:	NM_203394.1 , NP_976328.1
RefSeq Size:	5728 bp
RefSeq ORF:	2736 bp
Locus ID:	144455
UniProt ID:	Q96AV8
Cytogenetics:	12q21.2
Protein Families:	Transcription Factors
MW:	99.7 kDa
Gene Summary:	E2F transcription factors, such as E2F7, play an essential role in the regulation of cell cycle progression (Di Stefano et al., 2003 [PubMed 14633988]).[supplied by OMIM, May 2008]

Product images:



Circular map for RC217596



Western blot validation of overexpression lysate (Cat# [LY404335]) using anti-DDK antibody (Cat# [TA50011-100]). Left: Cell lysates from untransfected HEK293T cells; Right: Cell lysates from HEK293T cells transfected with RC217596 using transfection reagent MegaTran 2.0 (Cat# [TT210002]).