

Product datasheet for **RC217593**

Kindlin (FERMT1) (NM_017671) Human Tagged ORF Clone

Product data:

Product Type:	Expression Plasmids
Product Name:	Kindlin (FERMT1) (NM_017671) Human Tagged ORF Clone
Tag:	Myc-DDK
Symbol:	Kindlin
Synonyms:	C20orf42; DTGCU2; KIND1; UNC112A; URP1
Mammalian Cell Selection:	Neomycin
Vector:	pCMV6-Entry (PS100001)
E. coli Selection:	Kanamycin (25 ug/mL)



[View online »](#)

ORF Nucleotide
Sequence:

>RC217593 representing NM_017671
Red=Cloning site Blue=ORF Green=Tags(s)

TTTTGTAATACGACTCACTATAGGGCGGCCGGGAATTCGTCGACTGGATCCGGTACCGAGGAGATCTGCC
GCC**CGGATCGCC**

ATGCTGTCATCCACTGACTTTACATTTGCTTCCTGGGAGCTTGTGGTCCGCGTTGACCATCCCAATGAAG
AGCAGCAGAAAGACGTCACTGAGAGTATCTGGAGACCTTCATGTTGGAGGAGTGATGCTCAAGTTAGT
AGAACAGATCAATATATCCCAAGACTGGTCAGACTTTGCTCTTTGGTGGGAACAGAACATTGCTGGCTT
CTGAAAACCCACTGGACCCTGGACAAATATGGGGTCCAGGCAGATGCAAAGCTTCTCTTACCCCTCAGC
ATAAAAATGCTGCGCCTTCGTCTGCCGAATTTGAAGATGGTGGAGTTGCGAGTCAGCTTCTCAGCTGTGGT
TTTTAAAGCTGTCAGTGATATCTGCAAAATCCTGAATATTAGAAGATCAGAAGAGCTTTCCTTGTAAAG
CCGTCTGGTGACTATTTAAGAAGAAGAAGAAAAAGACAAAAAATAAAGGAACCCATAATTGAAGATA
TTCTAAACCTGGAGAGTTCTCCAACAGCTTCAGGTTTCATCAGTAAGTCTGGTTTATACAGTAAAACCAT
GACCCCTATATATGACCCCATCAATGGAACACCAGCATCATCCACCATGACTTGGTTTCAGTGACAGCCCT
TTGACGGAACAAAAGTGCAGCATCTCGCATTTCAGCCAACCCCCAGTCCCAGAACGACTTGGCGGATA
TGTACCAGCCTCGGTCTCTGGTTGATAAAGCCAAGCTCAATGCAGGTTGGCTAGACTCCTCACGCTCCCT
TATGGAACAAGGCATCCAAGAGGATGAGCAGCTGCTCTTACGATTTAAATATTATTCTTTCTTCCGACTTG
AATCCTAAATATGATGCTGTCCGAATAAACCAACTCTATGAGCAAGCCAGGTGGGCCATTCTCTTAGAAG
AAATTGATTGCACAGAGGAAGAAATGTTGATCTTTCAGCTCTACAGTACCACATTAGCAAACCTGTCGTT
GTCTGTGAAACACAGGATTTTGCAGGCGAGTCCGAGGTTGATGAAATAGAAGCGGCGCTTTCTAATTTG
GAAGTAACCCCTAGAAGGTGAAAAAGCGGACAGCCTTTTGGAGGACATTACTGATATCCCTAAACTGCGAG
ATAATCTCAAATATTTAGGCCCAAGAAGTTACTACCAAAGCTTTCAAACAATATTGGTTTATCTTTAA
AGACACATCCATAGCATACTTTAAAAAATAAGGAAGTTGAACAAGGAGAACCCTAGAAAAACTAAATCCTT
AGAGGCTGCGAAGTTGTGCCGATGTAATGTAGCAGGAAGAAAAATTTGGAATCAAGTTACTAATCCCTG
TTGCCGATGGTATGAATGAAATGTATTTGAGATGTGACCATGAGAATCAATACGCCCAATGGATGGCTGC
CTGCATGTTGGCATCGAAGGGCAAACCATGGCAGACAGCTCCTACCAGCCAGAGGTCCTCAACATCCTT
TCATTTCTGAGGATGAAAAACAGGAACCTGCATCTCAGGTGGCTTCCAGTCTCGAAAACATGGATATGA
ACCCAGAATGTTTTGTGTACCACGGTGTGCAAAAAGACAAAAATCCAAACAGCTGGCCGCCGGATCCT
GGAGGCGCACCAAGCTGGCCAGATGCCCTGGTGAAGCCAAGCTGCGGTTTCATCCAGGCGTGGCAG
TCACTGCCTGAGTTTGGCCTCACCTACTACCTTGTGAGATTTAAAGGAAGCAAAAAAGATGACATTTCTGG
GAGTTTTCATATAACAGGTTGATTAATAATGATGCAGCCACCGGATTCCAGTGACAACATGGAGATTCAC
AAATATCAAACAGTGAATGTAACTGGGAAACCCGGCAGGTGGTCATCGAGTTTGACAAAACGCTTTT
ACTGCTTTCACCTGCCTGAGTGCAGATTGCAAGATTGTGCACGAGTACATTGGCGGCTACATTTTCTTGT
CCACCCGCTCCAAGGACCAGAATGAAACTCGATGAGGACTTGTCCACAAATTGACCGGCGGTACAGGA
T

ACGCGTACGCGGCCGCTCGAGCAGAACTCATCTCAGAAGAGGATCTGGCAGCAATGATATCCTGGATT
ACAAGGATGACGACGATAAGGTTTAA

Protein Sequence: >RC217593 representing NM_017671
Red=Cloning site Green=Tags(s)

```

MLSSTDFTFASWELVVRVDHPNEEQKDVTLRVSGDLHVGGVMLKLVEQINISQDWSDFALWWEQKHCWL
LKTHWTLDKYGVQADAKLLFTPQHKMLRLRLPNLKMVRLRVSFSAVVFKAUSDICKILNIRRSEELSLK
PSGDYFKKKKKDKNNKEPIIEDILNLESPTASGSSVSPGLYSKTMTPYDPIINGTPASSTMTWFSDSP
LTEQNCSILAFSQPPQSPEALADMYQPRSLVDKAKLNAGWLDSSRSLMEQIQEDELQLLRFKYYSFFDL
NPKYDAVRINQLYEQARWAILLEEIDCTEEEMLIFAALQYHISKLSL SAETQDFAGESEVDEIEAALS
EVTLEGGKADSLLEDITDIPKLADNLKLFKPKLLPKAFKQYWFIFKDTSIAYFKNKELEQGEPLKLN
RGCEVVPDQVNVAGRKFVGIKLLIPVADGMNEMYLRCDHENQYAQWMAACMLASKGKTMADSSYQPEVLN
SFLRMKNRNSASQVASSLENMDMNEPCFVSPRCAKRHSKQLAARILEAHQNVAMPLVEAKLRFIQAWQ
SLPEFGLTYLVRFKGSKDDILGVSYNRLIKIDAATGIPVTTWRFTNIKQWNVNWEQVVIIEFDQNVF
TAFITCLADCKIVHEYIGGYIFLSTRSKDQNETLDEDL FHKLTGGQD
    
```

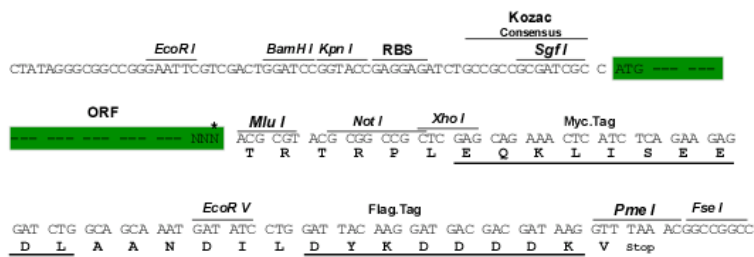
TRTRPLEQKLI SEEDLAANDILDYKDDDDKV

Chromatograms: https://cdn.origene.com/chromatograms/mk8015_b11.zip

Restriction Sites: SgfI-MluI

Cloning Scheme:

Cloning sites used for ORF Shuttling:



ACCN: NM_017671

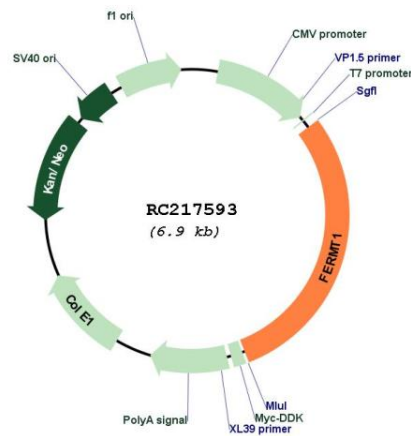
ORF Size: 2031 bp

OTI Disclaimer: The molecular sequence of this clone aligns with the gene accession number as a point of reference only. However, individual transcript sequences of the same gene can differ through naturally occurring variations (e.g. polymorphisms), each with its own valid existence. This clone is substantially in agreement with the reference, but a complete review of all prevailing variants is recommended prior to use. [More info](#)

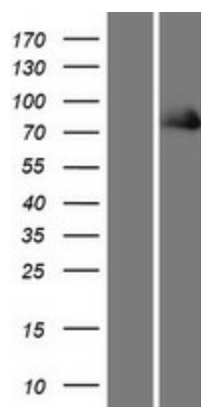
OTI Annotation: This clone was engineered to express the complete ORF with an expression tag. Expression varies depending on the nature of the gene.

Components:	The ORF clone is ion-exchange column purified and shipped in a 2D barcoded Matrix tube containing 10ug of transfection-ready, dried plasmid DNA (reconstitute with 100 ul of water).
Reconstitution Method:	<ol style="list-style-type: none">1. Centrifuge at 5,000xg for 5min.2. Carefully open the tube and add 100ul of sterile water to dissolve the DNA.3. Close the tube and incubate for 10 minutes at room temperature.4. Briefly vortex the tube and then do a quick spin (less than 5000xg) to concentrate the liquid at the bottom.5. Store the suspended plasmid at -20°C. The DNA is stable for at least one year from date of shipping when stored at -20°C.
RefSeq:	NM_017671.5
RefSeq Size:	5168 bp
RefSeq ORF:	2034 bp
Locus ID:	55612
UniProt ID:	Q9BQL6
Cytogenetics:	20p12.3
MW:	77.3 kDa
Gene Summary:	This gene encodes a member of the fermitin family, and contains a FERM domain and a pleckstrin homology domain. The encoded protein is involved in integrin signaling and linkage of the actin cytoskeleton to the extracellular matrix. Mutations in this gene have been linked to Kindler syndrome. [provided by RefSeq, Dec 2009]

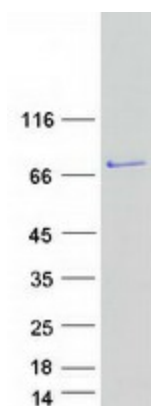
Product images:



Circular map for RC217593



Western blot validation of overexpression lysate (Cat# [LY413620]) using anti-DDK antibody (Cat# [TA50011-100]). Left: Cell lysates from untransfected HEK293T cells; Right: Cell lysates from HEK293T cells transfected with RC217593 using transfection reagent MegaTran 2.0 (Cat# [TT210002]).



Coomassie blue staining of purified FERMT1 protein (Cat# [TP317593]). The protein was produced from HEK293T cells transfected with FERMT1 cDNA clone (Cat# RC217593) using MegaTran 2.0 (Cat# [TT210002]).