

Product datasheet for **RC217584**

SYTL2 (NM_032943) Human Tagged ORF Clone

Product data:

Product Type:	Expression Plasmids
Product Name:	SYTL2 (NM_032943) Human Tagged ORF Clone
Tag:	Myc-DDK
Symbol:	SYTL2
Synonyms:	CHR11SYT; EXO4; PPP1R151; SGA72M; SLP2; SLP2A
Mammalian Cell Selection:	Neomycin
Vector:	pCMV6-Entry (PS100001)
E. coli Selection:	Kanamycin (25 ug/mL)



[View online »](#)

**ORF Nucleotide
Sequence:**

>RC217584 representing NM_032943
 Red=Cloning site Blue=ORF Green=Tags(s)

TTTTGTAATACGACTCACTATAGGGCGGCCGGGAATTCGTCGACTGGATCCGGTACCGAGGAGATCTGCC
 GCC**GCGATCGCC**

ATGATTGACTTAAGCTTCTGACTGAAGAGGAACAAGAGGCCATCATGAAGTTTTGCAGCGGGATGCTG
 CTCTGAAGAGGGCCGAAGAAGAGAGAGTACACATTTGCCTGAAAAAATTAAGGATGACCAGCAGCTGAA
 GAATATGAGTGGCCAATGGTTTTATGAAGCCAAGGCAAAAAGGCACAGGGACAAAATCCATGGCGCAGAT
 ATCATCAGAGCATCTATGAGAAAAGAGGGCCCCAGATAGCAGCTGAGCAGAGTAAAGACAGAGAAAATG
 GGGCAAAGGAAAGCTGGGTGAATAATGTCAACAAAGATGCTTTCCTTCTCCAGAGCTGGCTGGCGTTGT
 AGAAGAGCCAGAAGAAGATGCAGCACCAGCAAGCCGAGTTCAGTGTGGTAAATCCAGTTCAGTGTG
 ATTGATATGTCCAGGAAAACACAAGGAAACCAATGTGTCTCCAGAGAAGCAGAGGAAGAATCCGTTTA
 ATAGCTCCAAGTTGCCAGAAGGTCACTCGTCACAACAACTAAAAATGAACAGTCAAAAAATGGAAGAAC
 TGGTTTATTTAGACTTCAAAGAGGATGAATTGTGAGTCAAAAAGAAAAGTCAACTGTGCGAGATACT
 TCAATCCAAAAGTTAGAGAAATCAAAGCAGACTTTGCCAGGCCTTCAAATGGGTCCCAAATCAAGGCTC
 CAATCCCCAAAGCCAGGAAGATGATCTACAAATCAACTGATTTAAACAAAGATGATAACCAAGTCTTTTCC
 TAGACAAAGGACAGACTCCCTGAAAGCGAGAGGGGCTCCGAGAGGGATCCTCAAGCGCAACTCCAGTTCC
 AGTAGCACAGACTCAGAAACCTTCGTTATAATCACAACCTTTGAACCCAAAAGCAAAAATGTGTACCTG
 GCCTAACCATCCATGAGAGAATTTCTGAGAAGGAGCATTCTTTAGAAGACAACCTTTCCCAAACTCCCT
 GGAGCCATTAAGCATGTGAGATTCTCTGCAGTGAAGGATGAGCTTCCACAGAGTCTGGGCTAATCCAT
 GGTCCGGGAAGTAGGAGAATTTAGTGTTTAGAATCTGACAGATTGAAAAATGGAATGGAAGATGCAGGGG
 ACACAGAAGAGTTTCAGAGTGACCCTAAGCCTTCTCAATACAGAAAGCCTTCGCTTTTTTCAATCAAC
 CTCAAGCCCATATGTATCAAAAAGTGAACACATCAGCCAATGACTTCTGGTTCTTTTCCAATTAATGGG
 CTGCATTCTCATTAGAAGTTTTAACTGAAGACCACAGTCTATGGAGAATTCACCAACCATCAATGAAC
 CCAAAGATAAATCATCAGAAATTAACAAGGCTTGAATCTGTATTACCCAGAAGCCCTGCTGATGAACTGTC
 TCATTGTGTTGAGCCTGAGCCATCTCAGGTGCCAGGTGGCAGTTCTAGAGACCGTCAGCAAGGTTTCAGAA
 GAAGAACCAGTCTGTTTTGAAAACCTTGAAAGGAGTGCCGCTAGGAAAATGCCTTCCAAAAGTCTAG
 AAGACATTTTCATCAGATTCATCAATCAAGCAAAAGTAGATAATCAGCCAGAAGAATTAGTGCAGTAGTC
 TGAAGATGATGAGAAACCAGATCAGAAGCCAGTTACAAATGAATGCGTACCAAGAATTTCCACAGTGCCT
 ACACAACCTGATAATCCATTTTCTACCCTGACAAACTCAAAGGATGAGCAAGTCTGTTCCAGCATTTTC
 TCCAAGATGAGGTGAGTGGCAGTGTGATGAGTGTATAGTGGAGACTTTGGCAATCTGGAAGTTAAAGG
 AAATATTCAGTTTGAATTGAATATGTGGAGTCACTGAAGGAGTTGCATGTTTTTGTGGCCAGTGAAG
 GACTTAGCAGCAGCGGATGTAAAAAACAGCGTTCAGACCCATATGTAAGGCCTATTTGCTACCAGACA
 AAGGCAAAATGGGCAAGAAGAAAACACTCGTAGTGAAGAAAACCTTGAATCCTGTGTATAACGAAATACT
 GCGGTATAAAATGAAAAACAAATCTTAAAGACACAGAAATGAACCTGTCCATTTGGCATCGGGATACA
 TTTAAGCGCAATAGTTTCTAGGGGAGGTGGAACCTGATTTGAAACATGGGACTGGGATAACAAACAGA
 ATAAACAATTGAGATGGTACCCTCTGAAGCGGAAGACAGCACCAGTTGCCCTTGAAGCAGAAAACAGAGG
 TGAATGAAACTAGCTCTCCAGTATGTCCAGAGCCAGTCCCTGGTAAAAAGCTTCTCAACTGGAGAA
 GTGCACATCTGGGTGAAGGAATGCCTTGATCTACCACTGCTAAGGGGAAGTCATCTAAATCTTTTGTTA
 AATGTACCATCCTTCCAGATACAAGTAGGAAAAGTCGCCAGAAGACAAGAGCTGTAGGAAAACCAACAA
 CCCTATCTTCAACCACACTATGGTGTATGATGGGTTCCAGGCTGAAGATCTGATGGAAGCCTGTGTAGAG
 CTTACTGTCTGGGACATTACAAATTAACCAACCAATTTTTGGGAGGTCTTCGATTGGCTTTGGAACAG
 GTAAAAGTTATGGGACTGAAGTGGACTGGACTCTACTTCAGAGGAAGTTGCTCTCTGGGAGAAGAT
 GGTAAACTCCCCAATACTTGGATTGAAGCAACTGCCTCTCAGAATGCTTTTGATTGCCAAGATTTCC
 AAA

ACGCGTACGCGGCCGCTCGAGCAGAAACTCATCTCAGAAGAGGATCTGGCAGCAAATGATATCCTGGATT
 ACAAGGATGACGACGAT AAGGTTTAA

Protein Sequence: >RC217584 representing NM_032943
Red=Cloning site Green=Tags(s)

MIDL SFL TEEEQEAIMKVLQRDAALKRAEEERVHRLPEKIKDDQQLKNMSGQWFYEAKAKRHRDKIHGAD
 IIRASMRKKRPQIAAEQSKDRENGAKESWYNNVNDLFLPELAGVVEEPEEDAAPASSSSVVNPASSV
 IDMSQENTRKPNVSPEKRKNPFNSKLEPEGHSSQQTKEQSKNGRTGLFQTSKEDELSSEKSTVADTS
 IQKLEKSKQTL PGLSNGSQIKAPIPKARKMIYKSTDLNKDDNQSFPRQRTDSLKARGAPRGILKRNSSSS
 STDSETLRYNHNFEPKSKIVSPGLTIHERISEKEHSLEDNSSPNSLEPLKHVRFSAVKDELQPSPGLIHG
 REVGEFSVLESDRLKNGMEDAGDTEEFQSDPKPSQYRKPSLFHQSTSSPYVSKSETHQPMSTSGSFINGL
 HSHSEVL TARPQSMENSPINEPKDKSSELTRLESVLPRSPADEL SHCVEPEPSQVPGGSSRDRQQGSEE
 EPSPVLKTLERSAARKMPSKSLEDISSDSSNQAKVDNQPEELVRS AEDDEKPDQKPV TNECVPRISTVPT
 QPDNPF SHPKLKRMSKSVPAFLQDEVSGSVMSVYSGDFGNLEVKGNIQFAIEYVESL KELHVFVAQCKD
 LAAADVKKQRSDPYVKAYLLPDKGKMGKKKTLVVKKTLNVPVYNEILRYKIEKQILKTQKLNLSIWHRDTF
 KRNSFLGEVELDLETWDWNKQNKQLRWYPLKRKTAPVALEAENR GEMKLALQYVPEPVP GKLPPTTGEV
 HIWVKECLDLPLLRGSHLNSFVKCTILPDTSRKSRQKTRAVGKTTNPIFNHTMVYDGF RPEDLMEACVEL
 TVWDHYKLTNQFLGGLRIGFGTGKSYGTEVDWMDSTSEEVALWEKMNVPNTWIEATLPLRMLLI AKISK

TRTRPLEQKLISEEDLAANDILDYKDDDDKV

Chromatograms: https://cdn.origene.com/chromatograms/mg2657_h02.zip

Restriction Sites: SgfI-MluI

Cloning Scheme:

Cloning sites used for ORF Shuttling:



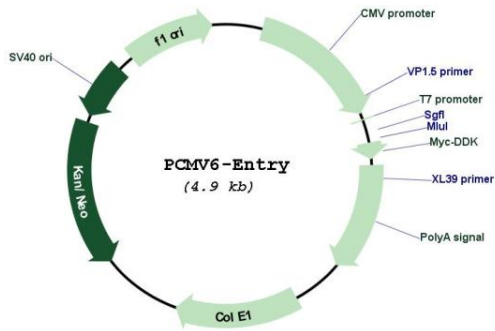
* The last codon before the Stop codon of the ORF

ACCN: NM_032943

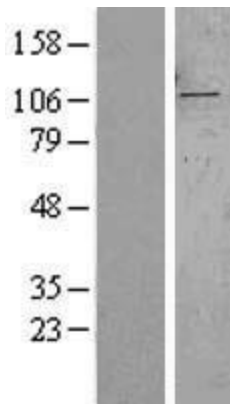
ORF Size: 2733 bp

OTI Disclaimer:	The molecular sequence of this clone aligns with the gene accession number as a point of reference only. However, individual transcript sequences of the same gene can differ through naturally occurring variations (e.g. polymorphisms), each with its own valid existence. This clone is substantially in agreement with the reference, but a complete review of all prevailing variants is recommended prior to use. More info
OTI Annotation:	This clone was engineered to express the complete ORF with an expression tag. Expression varies depending on the nature of the gene.
Components:	The ORF clone is ion-exchange column purified and shipped in a 2D barcoded Matrix tube containing 10ug of transfection-ready, dried plasmid DNA (reconstitute with 100 ul of water).
Reconstitution Method:	<ol style="list-style-type: none">1. Centrifuge at 5,000xg for 5min.2. Carefully open the tube and add 100ul of sterile water to dissolve the DNA.3. Close the tube and incubate for 10 minutes at room temperature.4. Briefly vortex the tube and then do a quick spin (less than 5000xg) to concentrate the liquid at the bottom.5. Store the suspended plasmid at -20°C. The DNA is stable for at least one year from date of shipping when stored at -20°C.
RefSeq:	NM_032943.4
RefSeq Size:	3985 bp
RefSeq ORF:	2733 bp
Locus ID:	54843
UniProt ID:	Q9HCH5
Cytogenetics:	11q14.1
Domains:	C2
MW:	102.4 kDa
Gene Summary:	The protein encoded by this gene is a synaptotagmin-like protein (SLP) that belongs to a C2 domain-containing protein family. The SLP homology domain (SHD) of this protein has been shown to specifically bind the GTP-bound form of Ras-related protein Rab-27A (RAB27A). This protein plays a role in RAB27A-dependent vesicle trafficking and controls melanosome distribution in the cell periphery. Alternative splicing results in multiple transcript variants encoding distinct isoforms.[provided by RefSeq, Jun 2009]

Product images:



Circular map for RC217584



Western blot validation of overexpression lysate (Cat# [LY403206]) using anti-DDK antibody (Cat# [TA50011-100]). Left: Cell lysates from untransfected HEK293T cells; Right: Cell lysates from HEK293T cells transfected with RC217584 using transfection reagent MegaTran 2.0 (Cat# [TT210002]).



Coomassie blue staining of purified SYTL2 protein (Cat# [TP317584]). The protein was produced from HEK293T cells transfected with SYTL2 cDNA clone (Cat# RC217584) using MegaTran 2.0 (Cat# [TT210002]).