

## Product datasheet for **RC217574**

### **ADAMTS15 (NM\_139055) Human Tagged ORF Clone**

#### **Product data:**

Product Type:	Expression Plasmids
Product Name:	ADAMTS15 (NM_139055) Human Tagged ORF Clone
Tag:	Myc-DDK
Symbol:	ADAMTS15
Mammalian Cell Selection:	Neomycin
Vector:	pCMV6-Entry (PS100001)
E. coli Selection:	Kanamycin (25 ug/mL)



[View online »](#)

**ORF Nucleotide Sequence:**

>RC217574 representing NM\_139055  
 Red=Cloning site Blue=ORF Green=Tags(s)

TTTTGTAATACGACTCACTATAGGGCGGCCGGGAATTCGTCGACTGGATCCGGTACCGAGGAGATCTGCC  
 GCC**CGCATCGCC**

ATGCTTCTGCTGGGCATCCTAACCTGGCTTTCGCCGGGCGAACCGCTGGAGGCTCTGAGCCAGAGCGGG  
 AGGTAGTCGTTCCCATCCGACTGGACCCGGACATTAACGGCCGCCGCTACTACTGGCGGGTCCCGAGGA  
 CTCGGGGGATCAGGGACTCATTTTTAGATCACAGCATTTAGAGGACTTTTACCTACACCTGACGCCG  
 GATGCTCAGTCTTGGCTCCCGCCTTCTCCACTGAGCATCTGGGCGTCCCCCTCCAGGGGCTCACCGGG  
 GCTCTTACAGACCTGCGACGCTGCTTCTATTCTGGGGACGTGAACGCCGAGCCGGACTCGTTCGCTGCTGT  
 GAGCCTGTGCGGGGGCTCCGCGGAGCCTTTGGCTACCGAGGCGCCGAGTATGTCATTAGCCCGTGCCC  
 AATGCTAGCGCGCCGGCGCAGCGCAACAGCCAGGGCGCACACCTTCTCCAGCGCCGGGTGTTCCGG  
 GCGGGCCTTCCGGAGACCCACCTCTCGCTGCGGGGTGGCTCGGGCTGGAACCCCGCCATCTACGGGC  
 CCTGGACCCTTACAAGCCGCGGGCGGGGCTTCCGGGAGAGTCTGAGCCGCGCAGGTCTGGGCGCGCC  
 AAGCGTTTCGTGTCTATCCCGCGGTACGTGGAGACGCTGGTGGTCCGCGGACGAGTCAATGGTCAAGTTC  
 ACGGCGCGGACCTGGAACATTATCTGCTGACGCTGCTGGCAACGCGCGCCGACTCTACCGCCATCCCA  
 CATCTCAACCCCATCAACATCGTTGTGGTCAAGGTGCTGCTTCTTAGAGATCGTACTCCGGGCCAAG  
 GTCACCGGCAATGCGGCCTGACGCTGCGCAACTTCTGTGCCTGGCAGAAGAAGCTGAACAAAGTGAAGT  
 ACAAGCACCCGAGTACTGGGACACTGCCATCTCTTACCAGGCAGGACTGTGTGGAGCCACCACCTG  
 TGACACCTGGGCATGGCTGATGTGGGTACCATGTGTGACCCCAAGAGAAGCTGCTCTGTATTGAGGAC  
 GATGGGCTTCCATCAGCCTTACCAGTCCACAGCTGGGCCACGTGTTCAACATGCCCATGACAATG  
 TGAAAGTCTGTGAGGAGGTGTTTGGGAAGCTCCGAGCCAACCATGATGTCCCGACCCATCCAGAT  
 CGACCGTGCCAACCCCTGGTCAGCCTGACGTGCTGCCATCATCACCGACTTCTTGACAGCGGGCACGGT  
 GACTGCCTCCTGGACCAACCCAGCAAGCCATCTCCCTGCCCGAGGATCTGCCGGGCGCCAGCTACACCC  
 TGAGCCAGCAGTGCAGCTGGCTTTTGGCGTGGGCTCCAAGCCCTGTCTTACATGCAGTACTGCACCAA  
 GCTGTGGTGCACCGGGAAGGCCAAGGGACAGATGGTGTGCCAGACCCGCCACTTCCCTGGGCGCATGGC  
 ACCAGCTGTGGGAGGGCAAGCTCTGCCTCAAAGGGGCTGCGTGGAGAGACACAACCTCAACAAGCACA  
 GGGTGGATGGTTCCTGGCCAAATGGGATCCCTATGGCCCTGCTCGGCACATGTGGTGGGGCGTGCA  
 GCTGGCCAGGAGGCAAGTGCACCAACCCACCCCTGCCAACGGGGCAAGTACTGCGAGGGAGTGAGGGT  
 AAATACCGATCCTGCAATCTGGAGCCCTGCCCCAGCTCAGCCTCCGGAAGAGCTTCCGGGAGGAGCAGT  
 GTGAGGCTTCAACGGCTACAACCACAGACCAACCGGCTCACTCTCGCGGTGGCATGGGTGCCAAGTA  
 CTCCGGCGTGTCTCCCGGGGACAAGTGCAAGCTCATCTGCCGAGCCAATGGCACTGGCTACTTCTATGTG  
 CTGGCACCAAGGTGGTGGACGGCACGCTGTGCTCTCCTGACTCCACCTCCGTCTGTGTCCAAGGCAAGT  
 GCATCAAGGTGGCTGTGATGGGAACCTGGGCTCCAAGAAGAGATTTCGACAAGTGTGGGGTGTGTGGGG  
 AGACAATAAGAGCTGCAAGAAGGTGACTGGACTTTCACCAAGCCCATGCATGGCTACAATTTCTGGTG  
 GCCATCCCGCAGGCGCCTCAAGCATCGACATCCGCCAGCGCGTTACAAGGGCTGATCGGGGATGACA  
 ACTACCTGGCTCTGAAGAACAGCCAAGGCAAGTACCTGCTCAACGGGCATTTCTGGTGTGCGCGGTGGA  
 GCGGGACCTGGTGTGAAGGGCAGTCTGCTGCGGTACAGCGGCACGGGCACAGCGGTGGAGAGCCTGCAG  
 GCTTCCCGGCCATCCTGGAGCCGCTGACCGTGGAGGTCTCTCCGTGGGGAAGATGACACCGCCCGGG  
 TCCGCTACTCCTTCTATCTGCCAAAGAGCCTCGGGAGGACAAGTCTCTCATCCCAAGGACCCCGGGG  
 ACCCTCTGTCTTGACAAACAGCGTCTCAGCCTCTCCAACCAGGTGGAGCAGCCGGACGACAGGCCCT  
 GCACGCTGGGTGGCTGGCAGCTGGGGCCGTGCTCCGCGAGCTGCGGCAGTGGCTGCAGAAGCGGGCGG  
 TGGACTGCCGGGCTCCGCCGGCAGCGCACGGTCCCTGCCTGTGATGCAGCCATCGGCCGTGGAGAC  
 ACAAGCTGCGGGGAGCCCTGCCACCTGGGAGCTCAGCGCCTGGTACCCTGCTCCAAGAGCTGCGGC  
 CGGGGATTTAGAGGCGCTCACTCAAGTGTGTGGGCCACGGAGCCGGCTGCTGGCCGGGACCAGTGCA  
 ACTTGACCGCAAGCCCGAGGACTGGACTTCTGCGTCTGAGGCGGTG

**ACGCGT**ACGCGGCCGCTCGAGCAGAACTCATCTCAGAAGAGGATCTGGCAGCAAATGATATCCTGGATT  
 ACAAGGATGACGACGATAAGGTTTAA

**Protein Sequence:** >RC217574 representing NM\_139055  
 Red=Cloning site Green=Tags(s)

```

MLLLGILTLAFAGRTAGGSEPEREVVPIRLDPDINGRRYYWRGPEDSGDQGLIFQITAFQEDFYLHLTP
DAQFLAPAFSTEHLGVPLQGLTGGSSDLRRCFYSGDVNAEPDSFAAVSLCGGLRGAFGYRGAEEYVISPLP
NASAPAAQRNSQGAHLLQRRGVPGGPSGDPTSRCGVASGWNPAILRALDPYKPRRAGFGESRSTRSSGRA
KRFVSIIPRYVETLVVADESMVKFHGADLEHYLLTLLATAARLYRHPSILNPINIVVVKVLLLRDRDSGPK
VTGNAALTLRNFCAWQKKLNKVS DKHPEYWDTAILFTRQDLCGATTCDTLGMADVGTMCDPKRSCSVIED
DGLPSAFTTAHELGHVFNMPHDNVKVEEVFGKLRANHMMSPQLIQIDRANPWSACSAAIITDFLDSGHG
DCLLDQPSKPIISLPEDLPGASYTLSQQCELAFGVGSKPCPYMQYCTKLWCTGKAKGQMVQTRHFPWADG
TSCGEGKCLKGACVERHNLNKHVRVDGSAKWDPYGPCSRTCGGGVQLARRQCTNPTPANGGKYCEGVRV
KYRSCNLEPCPSSASGKSFREEQCEAFNGYNHSTNRLTLAVAWPKYSGVSPRDKCKLICRANGTGYFYV
LAPKVVDGTL CSPDST SVCVQGGKCIKAGCDGNL GSKKRFDKCGVCGGDNK SCKKV TGLFTKPMHGYNFV
AIPAGASSIDIRQRYKGLIGDDNYLALKNSQGYLLNGHFVSAVERDLVVKGSLLRYSGTGTAVESLQ
ASRP ILEPLTVEVLSVGKMTPPRVRYSFYLPKEPREDKSSHPKDP RGPSVLHNSVLSL SNQVEQPDRPP
ARWVAGSWGPCSASCGLQKRAVDCRGSAGQRTVPACDAHRPVETQACGEPCTWELSAWSPCKSCG
RGFQRRSLKCVGHGGRL LARDQCNLHRKPQELDFCVLRPC
  
```

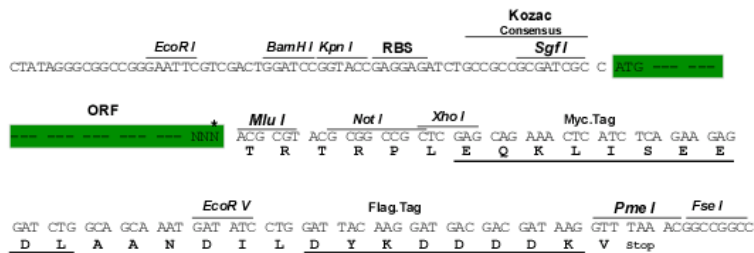
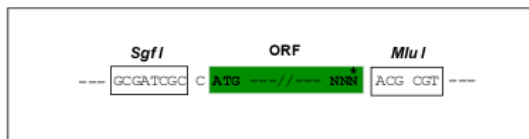
TRTRPLEQKLISEEDLAANDILDYKDDDDKV

**Chromatograms:** [https://cdn.origene.com/chromatograms/mk6170\\_e07.zip](https://cdn.origene.com/chromatograms/mk6170_e07.zip)

**Restriction Sites:** SgfI-MluI

**Cloning Scheme:**

Cloning sites used for ORF Shuttling:



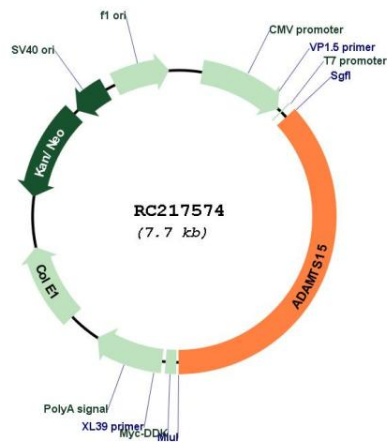
\* The last codon before the Stop codon of the ORF

**ACCN:** NM\_139055

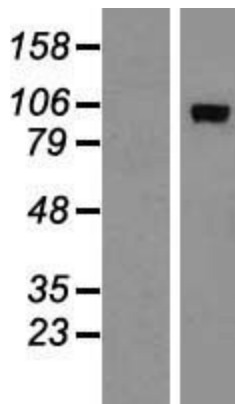
<b>ORF Size:</b>	2850 bp
<b>OTI Disclaimer:</b>	<p>Due to the inherent nature of this plasmid, standard methods to replicate additional amounts of DNA in E. coli are highly likely to result in mutations and/or rearrangements. Therefore, OriGene does not guarantee the capability to replicate this plasmid DNA. Additional amounts of DNA can be purchased from OriGene with batch-specific, full-sequence verification at a reduced cost. Please contact our customer care team at <a href="mailto:custsupport@origene.com">custsupport@origene.com</a> or by calling 301.340.3188 option 3 for pricing and delivery.</p> <p>The molecular sequence of this clone aligns with the gene accession number as a point of reference only. However, individual transcript sequences of the same gene can differ through naturally occurring variations (e.g. polymorphisms), each with its own valid existence. This clone is substantially in agreement with the reference, but a complete review of all prevailing variants is recommended prior to use. <a href="#">More info</a></p>
<b>OTI Annotation:</b>	This clone was engineered to express the complete ORF with an expression tag. Expression varies depending on the nature of the gene.
<b>Components:</b>	The ORF clone is ion-exchange column purified and shipped in a 2D barcoded Matrix tube containing 10ug of transfection-ready, dried plasmid DNA (reconstitute with 100 ul of water).
<b>Reconstitution Method:</b>	<ol style="list-style-type: none"> <li>1. Centrifuge at 5,000xg for 5min.</li> <li>2. Carefully open the tube and add 100ul of sterile water to dissolve the DNA.</li> <li>3. Close the tube and incubate for 10 minutes at room temperature.</li> <li>4. Briefly vortex the tube and then do a quick spin (less than 5000xg) to concentrate the liquid at the bottom.</li> <li>5. Store the suspended plasmid at -20°C. The DNA is stable for at least one year from date of shipping when stored at -20°C.</li> </ol>
<b>RefSeq:</b>	<a href="#">NM_139055.3</a>
<b>RefSeq Size:</b>	2853 bp
<b>RefSeq ORF:</b>	2853 bp
<b>Locus ID:</b>	170689
<b>UniProt ID:</b>	<a href="#">Q8TE58</a>
<b>Cytogenetics:</b>	11q24.3
<b>Protein Families:</b>	Druggable Genome, Protease, Secreted Protein
<b>MW:</b>	101.5 kDa

**Gene Summary:**

This gene encodes a member of the ADAMTS (a disintegrin and metalloproteinase with thrombospondin motifs) protein family. ADAMTS family members share several distinct protein modules, including a propeptide region, a metalloproteinase domain, a disintegrin-like domain, and a thrombospondin type 1 (TS) motif. Individual members of this family differ in the number of C-terminal TS motifs, and some have unique C-terminal domains. The encoded preproprotein is proteolytically processed to generate the mature enzyme, which may play a role in versican processing during skeletal muscle development. This gene may function as a tumor suppressor in colorectal and breast cancers. [provided by RefSeq, May 2016]

**Product images:**


Circular map for RC217574



Western blot validation of overexpression lysate (Cat# [LY408405]) using anti-DDK antibody (Cat# [TA50011-100]). Left: Cell lysates from untransfected HEK293T cells; Right: Cell lysates from HEK293T cells transfected with RC217574 using transfection reagent MegaTran 2.0 (Cat# [TT210002]).