

## Product datasheet for RC217568

### SERHL2 (NM\_014509) Human Tagged ORF Clone

#### Product data:

Product Type:	Expression Plasmids
Product Name:	SERHL2 (NM_014509) Human Tagged ORF Clone
Tag:	Myc-DDK
Symbol:	SERHL2
Synonyms:	dj222E13.1
Mammalian Cell Selection:	Neomycin
Vector:	pCMV6-Entry (PS100001)
E. coli Selection:	Kanamycin (25 ug/mL)
ORF Nucleotide Sequence:	>RC217568 ORF sequence Red=Cloning site Blue=ORF Green=Tags(s)

TTTTGTAATACGACTCACTATAGGGCGGCCGGAATTCGTCGACTGGATCCGGTACCGAGGAGATCTGCC  
GCC**CGATCGCC**

ATGAGTGAGAACGCCGCCACCAGGTCTGATCTCAGAGCTGAAGCTGGCTGTGCCCTGGGGCCACATCGCAG  
CCAAAGCCTGGGGCTCCCTGCAGGGCCCTCCAGTTCTCTGCCTGCACGGCTGGCTGGACAATGCCAGCTC  
CTTCGACAGACTCATCCCTCTTCTCCCGCAAGACTTTTATTACGTTGCCATGGATTCGGAGGTCATGGG  
CTCTCGTCCATTACAGCCAGGTGTCCATATTACCTCCAGACTTTTGTGAGTGAGATCCGAAGAGTTG  
TGGCAGCCTTGAATGGAATCGATTCTCCATTCTGGGCCACAGCTTCGGTGGCGTCGTGGCGGAATGTT  
TTTCTGTACCTTCCCGAGATGGTGGATAAACTTATCTTGCTGGACACGGCTCTTTCTCCTGGAATCA  
GATGAAATGGAGAACTTCTGCTGACCTACAAGCGGAGAGCCATAGAGCACGTGCTGCAGGTAGAGGCCCTCC  
AGGAGCCCTCGCACGTGTTTCCAGCTGAAGCAGCTGCTGCAGAGGTTACTGAAGAGCAATAGCCACTTGAG  
TGAGGAGTGCGGGGAGCTTCTCCTGCAAAGAGGAACCACGAAGGTGGCCACAGGTCTGGTTCTGAACAGA  
GACCAGAGGCTCGCTGGGCAGAGAACAGCATTGACTTCATCAGCAGGGAGCTGTGTGCCATTCCATCA  
GGAAGCTGCAGGCCCATGCTCTGTTGATCAAAGCAGTCCACGGATATTTTATTCAAGACAGAATTACTC  
TGAGAAGGAGTCCCTGTCTGTTTATGATAGACACGATGAAATCCACCCTCAAAGAGCAGTTCAGTTTGTG  
GAAGTCCAGGCAATCACTGTGTCCACATGAGCGAACCACAGCAGTGGCCAGTATCATCAGCTCCTTCT  
TACAGTGACACACATGCTCCAGCCAGCTG

**ACGCGT**ACGCGGCCGCTCGAGCAGAAACTCATCTCAGAAGAGGATCTGGCAGCAAATGATATCCTGGATT  
ACAAGGATGACGACGATAAGGTTTAA



[View online »](#)

**Protein Sequence:** >RC217568 protein sequence  
Red=Cloning site Green=Tags(s)

MSENAAPGLISELKLAVPWGHIAAKAWGSLQPPVLC LHGWL DNASSFDRLIPLLPQDFYVYVAMDFGGHGLSSHYPGVPYYLQTFVSEIRRVAALKWNRFSILGHSFGGVVGGMFFCTFPEMVDKLIILLDTPLFLLESDEMENLLTYKRAIEHVLQVEASQEP SHVFS LKQLLQRLLKSNHLSSECGELLQRGTTKVATGLV LNRDQRLAWAENSIDFISRELCAHSIRKLQAHVLLIKAVHGYFDSRQNYSEKESLSFMIDTMKSTLKEQFQFVEVPGNHCVHMSEPQHVASIISSFLQCTHMLPAQL

TRTRPLEQKLISEEDLAANDILDYKDDDDKV

**Chromatograms:** [https://cdn.origene.com/chromatograms/mk6443\\_e01.zip](https://cdn.origene.com/chromatograms/mk6443_e01.zip)

**Restriction Sites:** SgfI-MluI

**Cloning Scheme:**



**ACCN:** NM\_014509

**ORF Size:** 942 bp

**OTI Disclaimer:** The molecular sequence of this clone aligns with the gene accession number as a point of reference only. However, individual transcript sequences of the same gene can differ through naturally occurring variations (e.g. polymorphisms), each with its own valid existence. This clone is substantially in agreement with the reference, but a complete review of all prevailing variants is recommended prior to use. [More info](#)

**OTI Annotation:** This clone was engineered to express the complete ORF with an expression tag. Expression varies depending on the nature of the gene.

**Components:** The ORF clone is ion-exchange column purified and shipped in a 2D barcoded Matrix tube containing 10ug of transfection-ready, dried plasmid DNA (reconstitute with 100 ul of water).

**Reconstitution Method:**

1. Centrifuge at 5,000xg for 5min.
2. Carefully open the tube and add 100ul of sterile water to dissolve the DNA.
3. Close the tube and incubate for 10 minutes at room temperature.
4. Briefly vortex the tube and then do a quick spin (less than 5000xg) to concentrate the liquid at the bottom.
5. Store the suspended plasmid at -20°C. The DNA is stable for at least one year from date of shipping when stored at -20°C.

**RefSeq:** [NM\\_014509.5](#)

**RefSeq Size:** 1447 bp

**RefSeq ORF:** 945 bp

**Locus ID:** 253190

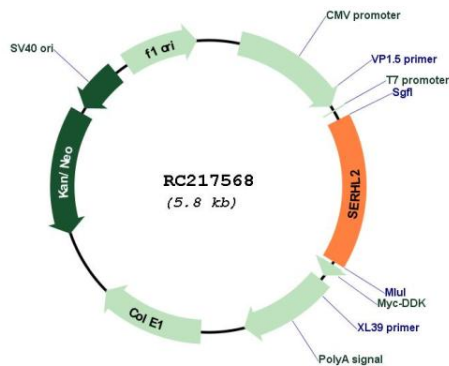
**UniProt ID:** [Q9H4I8](#)

**Cytogenetics:** 22q13.2

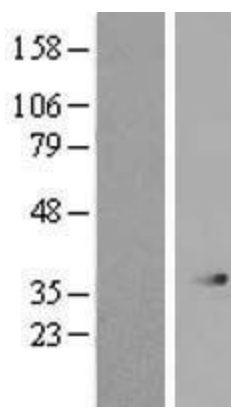
**MW:** 35.4 kDa

**Gene Summary:** Probable serine hydrolase. May be related to cell muscle hypertrophy.[UniProtKB/Swiss-Prot Function]

**Product images:**



Circular map for RC217568



Western blot validation of overexpression lysate (Cat# [LY415213]) using anti-DDK antibody (Cat# [TA50011-100]). Left: Cell lysates from untransfected HEK293T cells; Right: Cell lysates from HEK293T cells transfected with RC217568 using transfection reagent MegaTran 2.0 (Cat# [TT210002]).