

Product datasheet for **RC217567**

KLC4 (NM_201522) Human Tagged ORF Clone

Product data:

| | |
|---------------------------|---|
| Product Type: | Expression Plasmids |
| Product Name: | KLC4 (NM_201522) Human Tagged ORF Clone |
| Tag: | Myc-DDK |
| Symbol: | KLC4 |
| Synonyms: | bA387M24.3; KNSL8 |
| Mammalian Cell Selection: | Neomycin |
| Vector: | pCMV6-Entry (PS100001) |
| E. coli Selection: | Kanamycin (25 ug/mL) |



[View online »](#)

ORF Nucleotide Sequence:

>RC217567 ORF sequence
 Red=Cloning site Blue=ORF Green=Tags(s)

TTTTGTAATACGACTCACTATAGGGCGGCCGGGAATTCGTCGACTGGATCCGGTACCGAGGAGATCTGCC
 GCC**CGCATCGCC**

ATGTCAGGCCTGGTGTGGGGCAGCGGGATGAGCCTGCAGGCCACCGGCTCAGCCAAGAGGAGATCCTGG
 GGAGCACACGGCTGGTCAGCCAAGGGCTAGAGGCCCTACGCAGTGAACACCAGGCCGTGCTGCAAAGCCT
 GTCCAGACCATTGAGTGTCTGCAGCAGGGAGGCCATGAGGAAGGGCTGGTGCATGAGAAGGCCCGCAG
 CTTGCGGTTCTATGGAAAACATTGAGCTCGGGCTGAGTGAGGCCAGGTGATGCTGGCTTAGCCAGCC
 ACCTGAGCACAGTGGAGTCGGAGAAACAGAAGCTGCGGGCTCAGGTGCGGCGGCTATGCCAGGAGAACCA
 GTGGCTGCGGGATGAGCTGGCTGGCACCCAGCAGCGGCTACAGCGCAGTGAACAGGCTGTGGCTCAGCTG
 GAGGAGAAAAGAAGCACCTGGAGTTCCTGGGGCAGCTGCGGCAGTATGATGAGGATGGACATACCTCGG
 AGGAGAAAAGAAGCGATGCCACCAAGGATTCCTGGATGACCTCTTCTAATGAGGAGGAAGAGGCC
 CAGCAATGGCTTGTCCCCTGGTCAAGGTGCTACAGCAGCTCAGCAGGGTGGATATGAGATCCAGCAAGG
 TTGCGGACGTTGCAACCTGGTATCCAGTACGCAGCCCAAGGTCGCTATGAGGTGGCCGTGCCACTCT
 GTAAGCAGGCACTAGAGGACCTGGAGCGCACATCAGGCCGTGGCCACCCTGATGTCGCCACCATGCTCAA
 CATCCTTGCTTTGGTGTATCGTGACCAGAATAAGTATAAGGAAGCTGCCACCTGCTGAATGATGCCCTT
 AGCATCCGGGAGAGCACCTTGGGACCTGACCATCCTGCTGTGGCTGCCACACTCAACAATTTGGCTGTGC
 TCTATGGCAAAGGGGCAAGTACAAGGAGGCAGAGCCTCTGTGCCAGCGGGCACTGGAGATTCGAGAAAA
 GGCTCTGGGCACGAATCATCCAGATGTGGCAAACAGCTGAACAACCTGGCCCTTTGTGCCAAAACCCAG
 GGCAAGTATGAGGCCGTGGAACGCTACTACCAGCGAGCACTGGCCATCTACGAGGGCAGCTGGGGCCGG
 ACAACCCTAATGTAGCCCGGACCAAGAACAACCTGGCTTCTGTTACCTGAAACAGGGCAAATATGCTGA
 GGCTGAGACACTATAACAAGAGATCCTGACCCGTCGCCATGTACAGGAGTTTGGGTCTGTGGATGATGAC
 CACAAGCCCATCTGGATGCATGCAGAGGAGCGGGAGGAAATGAGCAAAAGCCGGCACCATGAGGGTGGGA
 CACCCTATGCTGAGTATGGAGGCTGGTACAAGGCTGCAAAGTGAAGCAGCCACAGTGAACACTACTCT
 GAGAAACCTGGGAGCTCTGTATAGGCGCCAGGAAAGCTGGAGGCTGCTGAGACCCTGGAGGAATGTGCC
 CTGCGGTCCCGGAGACAGGGCACTGACCCTATCAGCCAGACGAAGGTGGCAGAGCTGCTTGGGGAGAGTG
 ATGGTAGAAGGACCTCCAGGAGGGCCCTGGAGACAGTGTGAAATTCGAGGGAGGTGAAGATGCTTCTGT
 GGCTGTGGAGTGGTCCGGGGATGGCAGTGGGACCCTGCAGAGGAGTGGCTCTCTTGGCAAGATCCGGGAT
 GTGCTCCGCAGAAGCAGTGAACCTTGGTGAGGAAGCTCCAGGGGACTGAGCCTCGGCCCTCCAGCAGCA
 ACATGAAGCGAGCAGCCTCCTTGAACATCTGAACCAACCTAGTGACGACCCCTCCAGGTCTCCGGGG
 CCTCAGTGCCAGCACCATGGACCTCTTCAAGCAGC

ACGCGTACGCGGCCGCTCGAGCAGAACTCATCTCAGAAGAGGATCTGGCAGCAAATGATATCCTGGATT
 ACAAGGATGACGACGATAAGGTTTAA

Protein Sequence:

>RC217567 protein sequence
 Red=Cloning site Green=Tags(s)

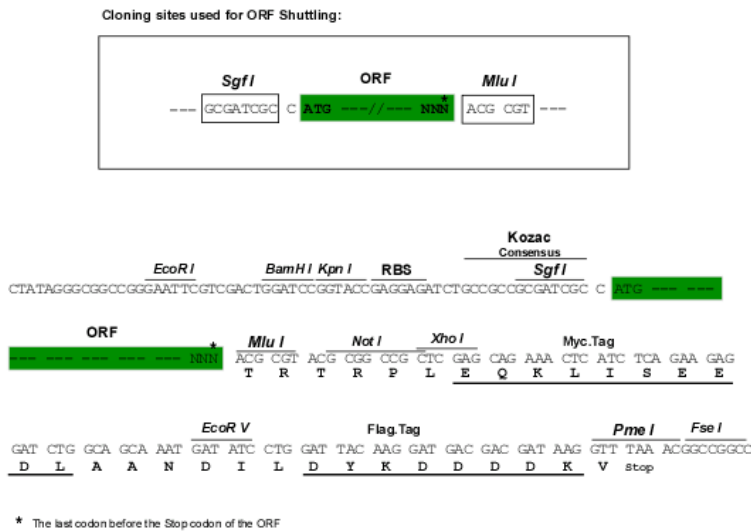
MSGLVLGQRDEPAGHRLSQEEILGSTRLVSQGLEALRSEHQAVLQSLQSTIECLQQGGHEEGLVHEKARQ
 LRRSMENIELGLSEAQVMLALASHLSTVESEKQKLRAQVRRRCQENQWLRDELQQLRSEQAVAQL
 EEEKHLLEFLGQLRQYDEDGHTSEEKEGDATKDSLDDLFPNEEEDPSNGLSRGQATAAQGGYEIPAR
 LRTLHNLVIQYAAQGRYEVAVPLCKQALEDLERTSGRGHPDVATMLNILALVYRDQNKYKAAHLLNDAL
 SIRESTLGPDPVAATLNNLAVLYGKRGYKAEPLCQRALEIREKVLGTNHPDVAKQLNNLALLCQNG
 GKYEAVERYQRALAIYEGQLGPDNPNVARTKNNLASCYKQGYAEATLYKEILTRAHVQEFQSVDDDD
 HKPIWMHAEEREEMSKSRHHEGGTPYAEYGGWYKACKVSSPTVNTTLRNLGALYRRQGKLEAAETLEECA
 LRSRRQGTDPISQTKVAELLGESDGRRTSQEGPGDSVKFEGGEDASVAVESWGDGSGTLQRSGLGKIRD
 VLRRSELLVRKLGTEPRPSSSNMKRAASLNYLNQPSAAPLQVSRGLSASTMDLSSSS

TRTRPLEQKLISEEDLAANDILDYKDDDDKV

Chromatograms: https://cdn.origene.com/chromatograms/mk6707_g03.zip

Restriction Sites: SgfI-MluI

Cloning Scheme:



ACCN: NM_201522

ORF Size: 1857 bp

OTI Disclaimer: The molecular sequence of this clone aligns with the gene accession number as a point of reference only. However, individual transcript sequences of the same gene can differ through naturally occurring variations (e.g. polymorphisms), each with its own valid existence. This clone is substantially in agreement with the reference, but a complete review of all prevailing variants is recommended prior to use. [More info](#)

OTI Annotation: This clone was engineered to express the complete ORF with an expression tag. Expression varies depending on the nature of the gene.

Components: The ORF clone is ion-exchange column purified and shipped in a 2D barcoded Matrix tube containing 10ug of transfection-ready, dried plasmid DNA (reconstitute with 100 ul of water).

- Reconstitution Method:**
1. Centrifuge at 5,000xg for 5min.
 2. Carefully open the tube and add 100ul of sterile water to dissolve the DNA.
 3. Close the tube and incubate for 10 minutes at room temperature.
 4. Briefly vortex the tube and then do a quick spin (less than 5000xg) to concentrate the liquid at the bottom.
 5. Store the suspended plasmid at -20°C. The DNA is stable for at least one year from date of shipping when stored at -20°C.

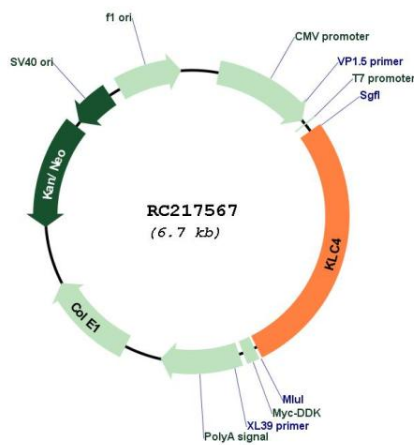
Note: Plasmids are not sterile. For experiments where strict sterility is required, filtration with 0.22um filter is required.

RefSeq: [NM_201522.3](#)

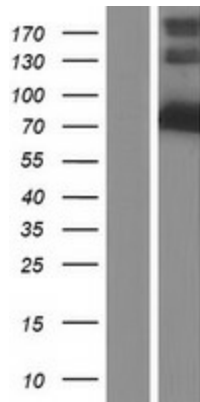
RefSeq Size: 2820 bp

| | |
|-------------------|---|
| RefSeq ORF: | 1860 bp |
| Locus ID: | 89953 |
| UniProt ID: | <u>Q9NSK0</u> |
| Cytogenetics: | 6p21.1 |
| Protein Families: | Druggable Genome |
| MW: | 68.6 kDa |
| Gene Summary: | Kinesin is a microtubule-associated force-producing protein that may play a role in organelle transport. The light chain may function in coupling of cargo to the heavy chain or in the modulation of its ATPase activity (By similarity).[UniProtKB/Swiss-Prot Function] |

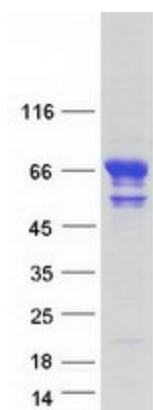
Product images:



Circular map for RC217567



Western blot validation of overexpression lysate (Cat# [LY404435]) using anti-DDK antibody (Cat# [TA50011-100]). Left: Cell lysates from untransfected HEK293T cells; Right: Cell lysates from HEK293T cells transfected with RC217567 using transfection reagent MegaTran 2.0 (Cat# [TT210002]).



Coomassie blue staining of purified KLC4 protein (Cat# [TP317567]). The protein was produced from HEK293T cells transfected with KLC4 cDNA clone (Cat# RC217567) using MegaTran 2.0 (Cat# [TT210002]).