

Product datasheet for **RC217562**

ARHGAP28 (NM_030672) Human Tagged ORF Clone

Product data:

Product Type:	Expression Plasmids
Product Name:	ARHGAP28 (NM_030672) Human Tagged ORF Clone
Tag:	Myc-DDK
Symbol:	ARHGAP28
Synonyms:	DKFZp686A2038; FLJ10312; Rho GTPase activating protein 28
Mammalian Cell Selection:	Neomycin
Vector:	pCMV6-Entry (PS100001)
E. coli Selection:	Kanamycin (25 ug/mL)



[View online »](#)

ORF Nucleotide Sequence:

>RC217562 representing NM_030672
 Red=Cloning site Blue=ORF Green=Tags(s)

TTTTGTAATACGACTCACTATAGGGCGGCCGGGAATTCGTCGACTGGATCCGGTACCGAGGAGATCTGCC
 GCC**CGCATCGCC**

ATGAGGAAAAAGGATAAGCAATCTATCAGGGATGTCAGAGACATTTTTGGAGTCAGTGAATCTCCTCCTC
 GTGATACCTGTGGCAACCACACTAATCAGCTGGATGGCACCAAGGAAGAAAGAGAGCTTCCAAGAGTTAT
 CAAGACAAGTGGTTCCATGCCAGATGATGCTTCTCAACAGTACTACCTGTCTGACGCATCCCAGGAT
 AAAGAAGGGAGTTTTGCGGTTCCAGGAGTGACTCTGTGGCTATACTTGAGACCATTCCAGTTCTACCAG
 TTCATTCCAATGGATCACCGGAGCCTGGACAGCCAGTTCAGAATGCGATAAGTGATGATTTTTCTGGA
 AAAGAACATTCCACCAGAGGCTGAAGAGCTGTCATTTGAAGTGTCTTATTCAGAAATGGTACGGAGGCT
 CTA AAAAGAAATAAACTAAGAAATCAGAGATTAAGAAAGAAGACTATGTTTTAACTAAATTTAATGTT
 AGAAAACCAGATTTGGCTTAACTGAAGCAGGAGATCTGTCTGCTGAAGACATGAAGAAAAACCGCATCT
 CTCTCTGATTGAATTGACTGCCTTTTTGATGCCTTTGGAATCAACTGAAAAGGAACAAAACAGAGAAA
 GTAAAAGGACGAGACAATGGGATTTTTGGAGTTCCAATTACAGTCTCCTGGACGGTGACCGAAAAGAAAG
 ACCCTGGAGTGAAAGTCCCCTGGTATTACAAAAATTTTTGAGAAAGTTGAGGAATCAGGTCTGGAATC
 TGAAGGAATTTTTCGACTTTCAGGATGACTGCTAAAGTCAAGCAATACCGTGAAGAACTTGATGCCAAG
 TTTAATGCTGATAAATTTAAATGGGACAAAATGTGCCATAGAGAAGCTGCAGTAATGTTGAAAGCGTTTT
 TCAGAGAACTACCCACCTCTCTCTCCCTGTGGAATATACCTGCCTTCATCAGTCTAATGAAAGAGG
 GCCTCACGTCAAAGTACAGTTTCAAGCCTTACACCTCATGGTCATGGCGCTGCCTGATGCCAACAGAGAT
 GCAGCTCAGGCCCTCATGACATTTCAATAAAGTGATTGCCAATGAATCAAAAAACCGAATGAGTCTGT
 GGAACATTTCTACAGTGTGGCACCAAACTTTTCTTCAGTGAAGCAAACACTCTGATTATGAAGAATT
 ACTGTTAGCAAACACTGCGGCCACATCATCCGCTAATGCTTAAGTACCAGAAGATTTTGTGGAAGGTT
 CCATCTTTCTTAATCACTCAAGTAAGAAGAATGAATGAAGCCACGATGCTATTGAAGAAGCAGCTCCCAA
 GTGTCAGGAAGCTGCTCAGGAGGAAGACCCTCGAGCGGGAGACTGCAAGCCCAAGACTTCAAAGTACT
 GCAAAAATCACCTCGGCAAGACGAATGTCTGACGTGCCGGAAGGAGTACACGGGTCCATGCTCCACTT
 CTCTCAAAGGTGCCATGGCCATCACTCAACAATCAAACCAAAGGACATATTGGCAAAATTTT
 AATATGAAAACAGAATACTGCCTGGCAGCGAGCTGCCTTTCTTCTAAATGGAAAATGGGTTAAAAA
 AGAAAGAGAAGAGTCGACAGAGACCAACAGGAGCCCCAAACATGTATTCTCTTCACTATTGGCCTGGAC
 ATCTCCACA

ACGCGTACGCGGCCGCTCGAGCAGAAACTCATCTCAGAAGAGGATCTGGCAGCAAATGATATCCTGGATT
 ACAAGGATGACGACGATAAGGTTTAA

Protein Sequence:

>RC217562 representing NM_030672
 Red=Cloning site Green=Tags(s)

MRKKDKQSIRDVRFIFGVSESPRDTGCGNHTNQLDGTKEERELPRVIKTSGSMPPDDASLNSTTLDASQD
 KEGSFVAPRSDSVAILETIPVLPVHNSGSEPEQPQVQNAISDDDFLEKNIPPEAEELSFEVSYSEMVTEA
 LKRNLKKSEIKKEDYVLTGFNVQKTRFGLTEAGDL SAEDMKIRHLSLIELTAFFDAFGIQLKRNKTEK
 VKGRDNGIFGVPLTVLLDGRKKDPGVKVPVLVQKFFEKVEESGLESEGFRLSGCTAKVKQYREELDAK
 FNADKFKWDMCHREAAVMLKAFFRELPTSLFPVEYIPAFISLMERGPVKVQFQALHLMVMALPDANRD
 AAQALMTFFNKVIANESKNRMSLWNI STVMAPNLFFSRSKHSDYEELLLANTAHIIRLMLKYQKILWKV
 PSFLITQVRRMNEATMLLKKQLPSVRKLLRRKTLERETASPKTSKVLQKSPSARRMSDVPEGVIRVHAPL
 LSKVSMATQLNNQTKAKDILAKFYENRILHWQRAALSFLNGKWKKEREESTETNRSPKHVFLFTIGLD
 IST

TRTRPLEQKLISEEDLAANDILDYKDDDDKV

Chromatograms:

https://cdn.origene.com/chromatograms/ja1406_e08.zip

Restriction Sites:

Sgfl-Mlul

Cloning Scheme:


ACCN: NM_030672

ORF Size: 1689 bp

OTI Disclaimer: The molecular sequence of this clone aligns with the gene accession number as a point of reference only. However, individual transcript sequences of the same gene can differ through naturally occurring variations (e.g. polymorphisms), each with its own valid existence. This clone is substantially in agreement with the reference, but a complete review of all prevailing variants is recommended prior to use. [More info](#)

OTI Annotation: This clone was engineered to express the complete ORF with an expression tag. Expression varies depending on the nature of the gene.

Components: The ORF clone is ion-exchange column purified and shipped in a 2D barcoded Matrix tube containing 10ug of transfection-ready, dried plasmid DNA (reconstitute with 100 ul of water).

Reconstitution Method:

1. Centrifuge at 5,000xg for 5min.
2. Carefully open the tube and add 100ul of sterile water to dissolve the DNA.
3. Close the tube and incubate for 10 minutes at room temperature.
4. Briefly vortex the tube and then do a quick spin (less than 5000xg) to concentrate the liquid at the bottom.
5. Store the suspended plasmid at -20°C. The DNA is stable for at least one year from date of shipping when stored at -20°C.

RefSeq: [NM_030672.2](#), [NP_109597.2](#)

RefSeq Size: 2059 bp

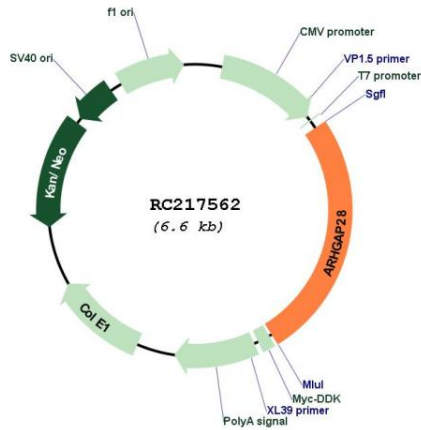
RefSeq ORF: 1691 bp

Locus ID: 79822

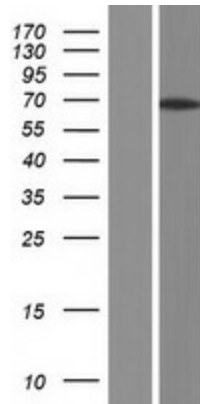
Cytogenetics: 18p11.31

MW: 63.9 kDa

Product images:



Circular map for RC217562



Western blot validation of overexpression lysate (Cat# [LY410740]) using anti-DDK antibody (Cat# [TA50011-100]). Left: Cell lysates from untransfected HEK293T cells; Right: Cell lysates from HEK293T cells transfected with RC217562 using transfection reagent MegaTran 2.0 (Cat# [TT210002]).