

Product datasheet for RC217561

ST3GAL3 (NM_174969) Human Tagged ORF Clone

Product data:

Product Type:	Expression Plasmids
Product Name:	ST3GAL3 (NM_174969) Human Tagged ORF Clone
Tag:	Myc-DDK
Symbol:	ST3GAL3
Synonyms:	DEE15; EIEE15; MRT12; SIAT6; ST3GALII; ST3Gal III; ST3GalIII; ST3N
Mammalian Cell Selection:	Neomycin
Vector:	pCMV6-Entry (PS100001)
E. coli Selection:	Kanamycin (25 ug/mL)
ORF Nucleotide Sequence:	>RC217561 representing NM_174969 Red=Cloning site Blue=ORF Green=Tags(s)

TTTTGTAATACGACTCACTATAGGGCGCCGGGAATTCGTCGACTGGATCCGGTACCGAGGAGATCTGCC
GCC**CGATCGCC**

ATGGGACTCTTGGTATTTGTGCGCAATCTGCTGCTAGCCCTCTGCCTCTTTCTGGTACTGGGATTTTTGT
ATTATTCTGCGTGAAGCTACACTTACTCCAGTGGGAGGAGACTCCAAGTATGATCGGTTGGGCTTCT
CCTGAATCTGGACTCTAACTGCCTGCTGAATTAGCCACCAAGTACGCAAATTTTCAGAGGGAGCTTGC
AAGCCTGGCTATGCTTCAGCCTTGATGACGGCCATCTTCCCCGGTTCTCAAGCCAGCACCCATGTTCC
TGGATGACTCCTTTCGCAAGTGGGCTAGAATCCGGGAGTTTCGTGCCGCCCTTTGGGATCAAAGGTCAAGA
CAATCTGATCAAAGCCATCTTGTGATCACCAGAGTACCGCCTGACCCCTGCCTTGGACAGCCTCCGC
TGCCGCCGCTGCATCATCGTGGGCAATGGAGGCGTTCTTGCCAACAAGTCTCTGGGGTACGAAATTGACG
ACTATGACATTGTGGTGAAGTGAATTCAGCACCAGTGAAGGCTTTGAGAAGGACGTGGGCAGCAAAC
GACTGCGCATCACCTACCCGAGGGCGCCATGCAGCGGCTGAGCAGTACGAGCGGATTCTCTCTTT
GTCCTCGCCGGCTTCAAGTGGCAGGACTTTAAGTGGTTGAAATACATCGTCTACAAGGAGAGAGTGAAGT
CATCGGATGGCTTCTGAAATCTGTGGCACTCGAGTGCCAAGGAGCCCCCTGAGATTCGAATCCTCAA
CCCATATTTATCCAGGAGGCCCTTACCCTCATTGGCCTGCCCTTCAACAATGGCCTCATGGGCCGG
GGGAACATCCCTACCCTTGGCAGTGTGGCAGTGACCATGGCAGTACACGGCTGTGACGAGGTGGCAGTGC
CAGGATTTGGCTATGACATGAGCACACCAACGCACCCCTGCACTACTATGAGACCGTTCCGATGGCAGC
CATCAAAGAGTCTGGACGCACAATATCCAGCGAGAGAAAGAGTTTCTGCGGAAGCTGGTAAAGCTCGC
GTCATCACTGATCTAAGCAGTGGCATC

ACGCGTACGCGGCCGCTCGAGCAGAAACTCATCTCAGAAGAGGATCTGGCAGCAAATGATATCCTGGATT
ACAAGGATGACGACGATAAGGTTAA



[View online »](#)

Protein Sequence: >RC217561 representing NM_174969
Red=Cloning site Green=Tags(s)

MGLLVFVRNLLLALCLFLVLGFLYYSAWKLHLLQWEEDSKYDRLGFLNLDSKLPaelATKYANFSEGAC
 KPGYASALMTAIFPRFSKPAPMFLDDsFRKWARIREFVPPFGIKGQDNLIKAILSVTKEYRLTPALDSLr
 CRRCIIIVGNGGVLANKSLGSRIDDYDIVVRLNSAPVKGFEKDVGSKTTLRITYEGAMQRPEQYERDSLf
 VLAGFKWQDFKWLKYIVYKERVASDGFWKSvatRVPKEPPEIRILNPYFIQEAafTLIGLpFNGLMGR
 GNIPTLGSvAVTMALHGcDEVAVAGFGYDMSTPNAPLHYyETVRMAAIKESwTHNIQREKEFLRKLvKAR
 VITDLSSGI

TRTRPLEQKLISEEDLAANDILDYKDDDDKv

Chromatograms: https://cdn.origene.com/chromatograms/mk8054_e11.zip

Restriction Sites: SgfI-MluI

Cloning Scheme:



ACCN: NM_174969

ORF Size: 1077 bp

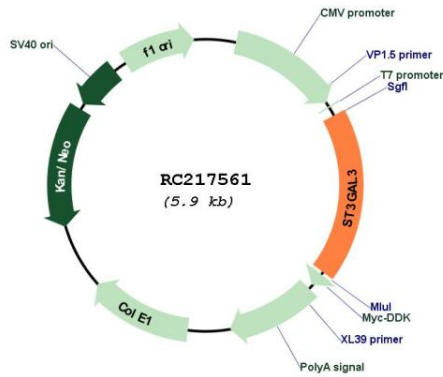
OTI Disclaimer: The molecular sequence of this clone aligns with the gene accession number as a point of reference only. However, individual transcript sequences of the same gene can differ through naturally occurring variations (e.g. polymorphisms), each with its own valid existence. This clone is substantially in agreement with the reference, but a complete review of all prevailing variants is recommended prior to use. [More info](#)

OTI Annotation: This clone was engineered to express the complete ORF with an expression tag. Expression varies depending on the nature of the gene.

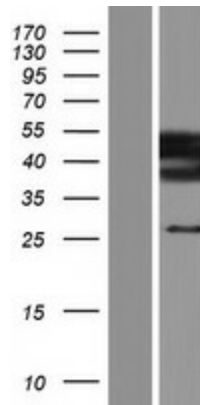
Components: The ORF clone is ion-exchange column purified and shipped in a 2D barcoded Matrix tube containing 10ug of transfection-ready, dried plasmid DNA (reconstitute with 100 ul of water).

Reconstitution Method:	<ol style="list-style-type: none">1. Centrifuge at 5,000xg for 5min.2. Carefully open the tube and add 100ul of sterile water to dissolve the DNA.3. Close the tube and incubate for 10 minutes at room temperature.4. Briefly vortex the tube and then do a quick spin (less than 5000xg) to concentrate the liquid at the bottom.5. Store the suspended plasmid at -20°C. The DNA is stable for at least one year from date of shipping when stored at -20°C.
RefSeq:	NM_174969.4
RefSeq Size:	2223 bp
RefSeq ORF:	1080 bp
Locus ID:	6487
UniProt ID:	Q11203
Cytogenetics:	1p34.1
Protein Families:	Secreted Protein, Transmembrane
Protein Pathways:	Glycosphingolipid biosynthesis - lacto and neolacto series, Keratan sulfate biosynthesis, Metabolic pathways
MW:	40.4 kDa
Gene Summary:	<p>The protein encoded by this gene is a type II membrane protein that catalyzes the transfer of sialic acid from CMP-sialic acid to galactose-containing substrates. The encoded protein is normally found in the Golgi apparatus but can be proteolytically processed to a soluble form. This protein is a member of glycosyltransferase family 29. Mutations in this gene have been associated with a form of autosomal recessive nonsyndromic cognitive disability as well as infantile epileptic encephalopathy. Multiple transcript variants encoding several different isoforms have been found for this gene. [provided by RefSeq, Jul 2017]</p>

Product images:



Circular map for RC217561



Western blot validation of overexpression lysate (Cat# [LY406363]) using anti-DDK antibody (Cat# [TA50011-100]). Left: Cell lysates from untransfected HEK293T cells; Right: Cell lysates from HEK293T cells transfected with RC217561 using transfection reagent MegaTran 2.0 (Cat# [TT210002]).