

Product datasheet for **RC217554**

KRT28 (NM_181535) Human Tagged ORF Clone

Product data:

Product Type:	Expression Plasmids
Product Name:	KRT28 (NM_181535) Human Tagged ORF Clone
Tag:	Myc-DDK
Symbol:	KRT28
Synonyms:	K25IRS4; KRT25D
Mammalian Cell Selection:	Neomycin
Vector:	pCMV6-Entry (PS100001)
E. coli Selection:	Kanamycin (25 ug/mL)



[View online »](#)

ORF Nucleotide Sequence:

>RC217554 representing NM_181535
 Red=Cloning site Blue=ORF Green=Tags(s)

TTTTGTAATACGACTCACTATAGGGCGGCCGGAATTCGTCGACTGGATCCGGTACCGAGGAGATCTGCC
 GCC**CGCATCGCC**

ATGTCTCTCCAATTTTCTAATGGATCCAGGCATGTTTGCTTAAGTCTGGAGCTGGATCTGTGACACCCC
 TCAATGGAGGTGCAGGCTTTGCAGGCAGCAGTGCATGTGGTGGCTCTGTTGCTGGAAGTGAATTTTCCTG
 TGCCCTGGGAGGGGGCTTGGGCAGTGTTCTGGTGGGAGCCATGCTGGTGGTGCCTTGGAAATGCTGCT
 TGTATTGGCTTTGCTGGAAGCGAAGGGGGACTCCTCTCTGGAATGAGAAGGTGACCATGCAAAATCTTA
 ATGACCGCTTGGCATCTACCTGGATAATGTGCGAGCTCTGGAGGAGGCAATGCTGAATTAGAGAGAAA
 AATCAAGGTTGGTATGAAAAACGGACCTGGATCTTGGCGTGGACTTGATCATGACTATAGCAGATAT
 CACCTAACAAATTGAGGATCTTAAGAATAAGATTATCTCCTCCACTACTACTAATGCTAATGTCATTCTGC
 AGATTGATAATGCCAGACTGGCTGCTGATGATTTCAAGCTAAAGTATGAAAATGAGCTCACCTTACCA
 AAACGTAGAGGCCGACATCAACGGATTACGGCGAGTCTGGACGAGCTGACGCTCTGCAGGACCGACCAG
 GAGCTGCAATATGAGTCTCTGAGTGAGGAGATGACATATCTCAAAAAGAACCACGAAGAGGAGATGAAGG
 CTCTGCAGTGCGCGGCTGGGGGCAACGTGAACGTGGAGATGAACGCGGCCCGGGGGTAGACCTCGCGGT
 TTTGTTGAACAACATGCGAGCGGAGTACGAAGCCCTTGCAGAGCAGAACCGAAGGACGCGGAGGCGCTGG
 TTCAATGAGAAGAGCGCCTCGCTGCAGCAACAGATCTCCACGACTCAGGCGCAGCCACTTTCGCCCGGA
 GCCAGCTCACCGAGATGAGGCGCACCTGCAGACCCTGGAGATCCAGCTGCAGTCCCTGATGGCCACGAA
 ACACTCCCTGGAGTGCTCCTTGACAGAGACCGAGAGCAACTACTGTACCGAGCTGGCGCAGATCCAGGCT
 CAGATCGGGGCCCTGGAGGAGCAGCTGCACCAGGTCAGAACCGAGACCGAGGGCCAGAAGCTGGAGTATG
 AGCATCTCCTCGATGTCAAGGTCCACTTGAAAAAGAAATTGAGACCTACTGCCGCTGATAGATGGAGA
 TGGAAATTCATGCTCCAATCAAAGGGCTTTGGATCAGGAAGCCCTGGGAATTCATCTAAAGATTTATCC
 AAAACCACACTGGTAAAGACAGTGGTTGAAGAGCTAGATCAACGTGGTAAAGTTCTTTATCAAGGATTC
 ACTCCATTGAAGAAAAGACATCTAAAATGACCAACGGCAAGACAGAACAAAGGGTTCCTTTC

ACGCGTACGCGGCCGCTCGAGCAGAACTCATCTCAGAAGAGGATCTGGCAGCAATGATATCCTGGATT
 ACAAGGATGACGACGATAAGGTTTAA

Protein Sequence:

>RC217554 representing NM_181535
 Red=Cloning site Green=Tags(s)

MSLQFSNGSRHVCLRSGAGSVRPLNGGAGFAGSSACGGSVAGSEFSCALGGGLGSVPGGSHAGGALGNAA
 CIGFAGSEGLL SGNEKVTMQNLNDRLASYL DNVRAL EEAELERKIKGWYKEYGPGSCRGLDHDYSRY
 HLTIEDLNKIIISSTTTNANVILQIDNARLAADDFRLKYENEL TLHQNVEADINGLRRVLDLTL CRTDQ
 ELQYESLSEEMTYLKNHEEEMKALQCAAGGNVNVEMNAAPGVDLAVLLNMRAEYEALAEQNRKDAEAW
 FNEKSASLQQQISHDSGAATFARSQLEMRRTLQTLQSLMATKHSLECSLTETESNYCTQLAQIQA
 QIGALEEQHLHQVRTETEGQKLEYEHL LDVKVHLEKEIETYCR LIDGDGNSCSKSKGFGSGSPGNSSKDL S
 KTTLVKTVVEELDQRGKVLSSRIHSIEEKT SKMTNGKTEQRVFP

TRTRPLEQKLISEEDLAANDILDYKDDDDKV

Chromatograms:

https://cdn.origene.com/chromatograms/mk8015_a01.zip

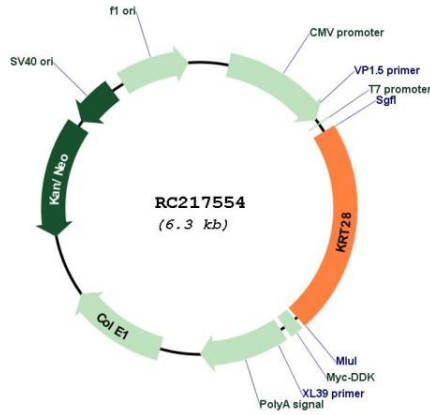
Restriction Sites:

Sgfl-MluI

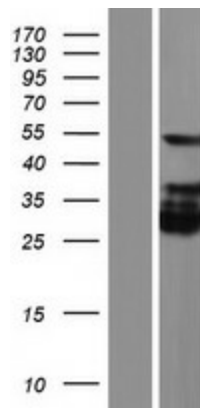
MW: 50.4 kDa

Gene Summary: This gene encodes a member of the type I (acidic) keratin family, which belongs to the superfamily of intermediate filament (IF) proteins. Keratins are heteropolymeric structural proteins which form the intermediate filament. These filaments, along with actin microfilaments and microtubules, compose the cytoskeleton of epithelial cells. The type I keratin genes are clustered in a region of chromosome 17q12-q21. [provided by RefSeq, Jul 2009]

Product images:



Circular map for RC217554



Western blot validation of overexpression lysate (Cat# [LY405697]) using anti-DDK antibody (Cat# [TA50011-100]). Left: Cell lysates from untransfected HEK293T cells; Right: Cell lysates from HEK293T cells transfected with RC217554 using transfection reagent MegaTran 2.0 (Cat# [TT210002]).