

Product datasheet for **RC217548**

PPM1H (NM_020700) Human Tagged ORF Clone

Product data:

Product Type:	Expression Plasmids
Product Name:	PPM1H (NM_020700) Human Tagged ORF Clone
Tag:	Myc-DDK
Symbol:	PPM1H
Synonyms:	ARHCL1; NERPP-2C; URCC2
Mammalian Cell Selection:	Neomycin
Vector:	pCMV6-Entry (PS100001)
E. coli Selection:	Kanamycin (25 ug/mL)



[View online »](#)

ORF Nucleotide Sequence:

>RC217548 representing NM_020700
 Red=Cloning site Blue=ORF Green=Tags(s)

TTTTGTAATACGACTCACTATAGGGCGGCCGGGAATTCGTCGACTGGATCCGGTACCGAGGAGATCTGCC
 GCC**GCGATCGCC**

ATGCTCACTCGAGTGAATCTGCCGTGGCCAATTCATGGCGGCATCATGGCTGGCAGCTCAGGCTCCG
 AGCACGGCGGCGGAGCTGCGGAGGCTCGGACCTGCCCTTCCCTACCGGGCGCCAGAGTTCCT
 GGGGCTGTCTCAGGACGAGGTGGAGTGCAGCGCCGACCACATCGCCCGCCCATCCTCATCTCAAGGAG
 ACTCGGCGGCTGCCCTGGGCCACTGGCTACGCAGAGGTTATCAATGCCGGGAAGAGCACACAAATGAAG
 ACCAAGCCAGCTGTGAGGTGCTCACTGTGAAGAAGAAGGCAGGGGCCGTGACCTCAACCCCAAACAGGAA
 CTCATCCAAGAGACGGTCTCCCTCCCAATGGGAAGGGCTGCAGCTGAAGGAGAACTCGGAATCCGAG
 GGTGTTTCTGCCACTATTGGTCGCTGTTGACGGGCACGCGGGTCCGGGGCCGCGGTGGTGGCGTCAC
 GCCTGTCGAGCACCACATCACGGAGCAGCTGCAGGACATCGTGGACATCCTGAAGAACTCCGCCGTCT
 GCCCCTACCTGCCTGGGGGAGGAGCCTGAGAACACGCCCGCAACAGCCGGACTCTGACCCGGGCAGCC
 TCCTGCGCGGAGGGGTGGGGGCCCGGGCTCCCCAGCAGCCCCCACACGCTTCTTTACCGAGAAGA
 AGATCCCCATGAGTGCCTGGTCATCGGAGCGCTTAAAGTGCATTCAAGGAAATGGACCTACAGATAGA
 ACGAGAGAGGAGTTCATATAATATATCTGGTGGCTGCACGGCCCTCATTGTGATTTGCCTTTTGGGGAAG
 CTGTATGTTGCAATGCTGGGATAGCAGGGCCATAATCATCAGAAATGGAGAAATATCCCATGTCTT
 CAGAATTTACCCCGAGACGGAGCGCCAGCGACTTCAGTACCTGGCATTTCATGCAGCCTCACTTGTGGG
 AAATGAGTTCACACATTTGGAGTTTCCAAGGAGAGTACAGAGAAAGGAGCTTGGAAAGAAGATGCTCTAC
 AGGGACTTTAATGACAGGCTGGGCATACAAAACCATGAGGATGAGGACTTGAAGTCCCCCTTATAT
 ATGGAGAAGCAAGAAGGCCCGGTAATGGCAACTATTGGAGTGACCAGGGGACTTGGGGACCATCACT
 GAAGGTGCATGACTCCAACATCTACATTAACCATTCCTGTCTCAGCTCCAGAGGTAAGAATCTACGAT
 CTTTCAAATATGATCATGGATCAGATGATGTGCTGATCTTGGCCACTGATGGACTCTGGGACGTTTTAT
 CAAATGAAGAAGTAGCAGAAGCAATCACTCAGTTTCTTCTAACTGTGATCCAGATGATCCTCACAGGTA
 CACACTGGCAGCTCAGGACCTGGTGTGCTGCCCGGGTGTGCTGAAGGACAGAGGATGGCGGATATCT
 AATGACCGACTGGGCTCAGGAGACGACATTTCTGTATATGTCATTCTTTAATACATGGAACAAGCTGT
 CA

ACGCGTACGCGGCCGCTCGAGCAGAACTCATCTCAGAAGAGGATCTGGCAGCAAATGATATCCTGGATT
 ACAAGGATGACGACGATAAGGTTTAA

Protein Sequence:

>RC217548 representing NM_020700
 Red=Cloning site Green=Tags(s)

MLTRVKSAVANFMGGIMAGSSGSEHGGSGSDLPLRFPYGRPEFLGLSQDEVECSADHIARPILILKE
 TRRLPWATGYAEVINAGKSTHNEDQASCEVLTVKKKAGAVTSTPNRNSSKRRSSLPNGEGLQLKENSESE
 GVSCHYWSLFDGHAGSGAAVVASRLLQHHITEQLQDIVDILKNSAVLPPTCLGEEPENTPANSRTLTRAA
 SLRGGVAGPSPSTPPTFRFFTEKKIPHECLVIGALESFAKEMDLQIERERSSYNISSGCTALIVICLLGK
 LYVANAGDSRAIIIRNGEIIIPMSSEFTPETERQRLQYLAFMQPHLLGNEFTHEFPRRVQRKELGKKMLY
 RDFNMTGWAYKTI EDEDLKFPLIYGEGKARVMATIGVTRGLGDHDLKVHDSNIYIKPFLSSAPEVRIYD
 LSKYDHGSDDVLILATDGLWDVLSNEEVAEAITQFLPNCDDPHRYTLAAQDLVMRARGVLKDRGWIRIS
 NDRLGSGDDISVYVIPLIHGNKLS

TRTRPLEQKLISEEDLAANDILDYKDDDDKV

Chromatograms:

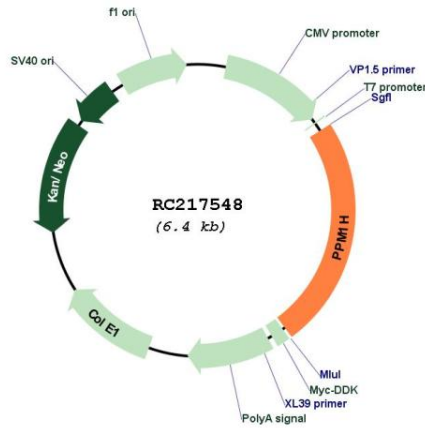
https://cdn.origene.com/chromatograms/mg2505_b03.zip

Restriction Sites:

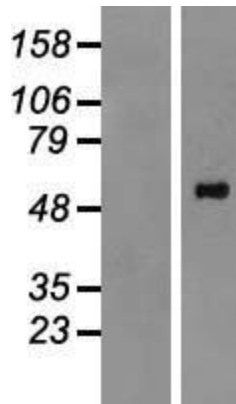
Sgfl-Mlul

Protein Families: Phosphatase
MW: 56.3 kDa
Gene Summary: Dephosphorylates CDKN1B at 'Thr-187', thus removing a signal for proteasomal degradation. [UniProtKB/Swiss-Prot Function]

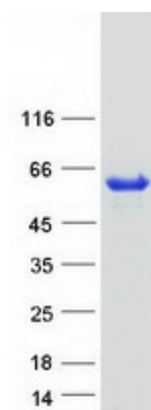
Product images:



Circular map for RC217548



Western blot validation of overexpression lysate (Cat# [LY412393]) using anti-DDK antibody (Cat# [TA50011-100]). Left: Cell lysates from untransfected HEK293T cells; Right: Cell lysates from HEK293T cells transfected with RC217548 using transfection reagent MegaTran 2.0 (Cat# [TT210002]).



Coomassie blue staining of purified PPM1H protein (Cat# [TP317548]). The protein was produced from HEK293T cells transfected with PPM1H cDNA clone (Cat# RC217548) using MegaTran 2.0 (Cat# [TT210002]).