

Product datasheet for RC217546

JKAMP (NM_001098625) Human Tagged ORF Clone

Product data:

Product Type:	Expression Plasmids
Product Name:	JKAMP (NM_001098625) Human Tagged ORF Clone
Tag:	Myc-DDK
Symbol:	JKAMP
Synonyms:	C14orf100; C24orf100; CDA06; HSPC213; HSPC327; JAMP
Mammalian Cell Selection:	Neomycin
Vector:	pCMV6-Entry (PS100001)
E. coli Selection:	Kanamycin (25 ug/mL)
ORF Nucleotide Sequence:	>RC217546 representing NM_001098625 Red=Cloning site Blue=ORF Green=Tags(s)

TTTTGTAATACGACTCACTATAGGGCGCCGGAATTCGTCGACTGGATCCGGTACCGAGGAGATCTGCC
GCC**CGATCGCC**

ATGGCATGCCCTGGACTTTATTGTGGGAAGACCCTATTATTTAAAAATGGCTCAACTGAAATATATGGAG
AATGTGGGGTATGCCCAAGAGGACAGAGAACGAATGCACAGAAATATTGTCAGCCTTGCACAGAATCTCC
TGAACCTTATGATTGGCTCTATCTTGGATTTATGGCAATGCTTCCTCTGGTTTTACATTGGTTCTTCATT
GAATGGTACTCGGGGAAAAAGAGTTCAGCGCACTTTTCCAACACATCACTGCATTATTTGAATGCAGCA
TGGCAGCTATTATCACCTTACTTGTGAGTGATCCAGTTGGTGTCTTTATATTCTGTTTCATGTCGAGTATT
GATGCTTTCTGACTGGTACACGATGCTTTACAACCAAGTCCAGATTACGTTACACAGTACACTGTACT
CATGAAGCCGTCTACCCACTATATACCATTGTATTTATCTATTACGCATTCTGCTTGGTATTAATGATGC
TGCTCCGACCTCTTCTGGTGAAGAAGATTGCATGTGGGTAGGGAATCTGATCGATTTAAAAGTATTTA
TGCTGCACTTTACTTCTCCCAATTTAAACCGTCTTCAGGCAGTTGGTGGAGGCCTTTTATATTACGCC
TTCCCATACATTATATTAGTGTTATCTTTGGTACTCTGGCTGTGTACATGTCTGCTTCTGAAATAGAGA
ACTGCTATGATCTTCTGGTCAGAAAGAAAAGACTTATTGTTCTCTTCAGCCACTGGTACTTCATGCCTA
TGAATAATCTCCATTTCCAGAGTGGATAAACTTGAGCAAGATTTGCCCTTTTGGCTTTGGTACCTACA
CCAGCCCTTTTTACTTGTCTACTGCAAAATTTACCGAACCTTCAAGGATACTCTCAGAAGGAGCCAATG
GACAC

ACGCGTACGCGGCCGCTCGAGCAGAAACTCATCTCAGAAGAGGATCTGGCAGCAAATGATATCTGGATT
ACAAGGATGACGACGATAAGGTTTAA



[View online »](#)

Protein Sequence: >RC217546 representing NM_001098625
Red=Cloning site Green=Tags(s)

MACLGLYCGKTLFLKNGSTEIYGECGVCPRGQRTNAQKYCQPCTESPELYDWLYLGFMAMLPLVLHWFIFI
 EWYSGKKSSSALFQHITALFECSMAAIIITLLVSDPVGVLVIRSCRVLMLSDWYTMLYNPSPDYVTTVHCT
 HEAVYPLYTIVFIYYAFCLVLMMLLRPLLVKKIACGLGKSDRFKSIYAALYFFPILTVLQAVGGGLLYYA
 FPYIILVLSLVTLAVYMSASEIENCYDLLVRKKRLIVLFSHWLLHAYGIIISISRVDKLEQDLPLLALVPT
 PALFYLF TAKFTEPSRILSEGANGH

TRTRPLEQKLISEEDLAANDILDYKDDDDKV

Chromatograms: https://cdn.origene.com/chromatograms/ja1505_a09.zip

Restriction Sites: SgfI-MluI

Cloning Scheme:



ACCN: NM_001098625

ORF Size: 915 bp

OTI Disclaimer: The molecular sequence of this clone aligns with the gene accession number as a point of reference only. However, individual transcript sequences of the same gene can differ through naturally occurring variations (e.g. polymorphisms), each with its own valid existence. This clone is substantially in agreement with the reference, but a complete review of all prevailing variants is recommended prior to use. [More info](#)

OTI Annotation: This clone was engineered to express the complete ORF with an expression tag. Expression varies depending on the nature of the gene.

Components: The ORF clone is ion-exchange column purified and shipped in a 2D barcoded Matrix tube containing 10ug of transfection-ready, dried plasmid DNA (reconstitute with 100 ul of water).

Reconstitution Method:

1. Centrifuge at 5,000xg for 5min.
2. Carefully open the tube and add 100ul of sterile water to dissolve the DNA.
3. Close the tube and incubate for 10 minutes at room temperature.
4. Briefly vortex the tube and then do a quick spin (less than 5000xg) to concentrate the liquid at the bottom.
5. Store the suspended plasmid at -20°C. The DNA is stable for at least one year from date of shipping when stored at -20°C.

RefSeq: [NM_001098625.2](#), [NP_001092095.1](#)

RefSeq Size: 2359 bp

RefSeq ORF: 918 bp

Locus ID: 51528

UniProt ID: [Q9P055](#)

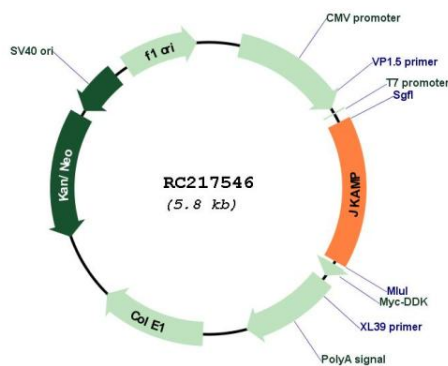
Cytogenetics: 14q23.1

Protein Families: Transmembrane

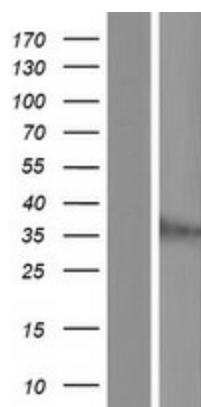
MW: 34.4 kDa

Gene Summary: May be a regulator of the duration of MAPK8 activity in response to various stress stimuli. Facilitates degradation of misfolded endoplasmic reticulum (ER) luminal proteins through the recruitment of components of the proteasome and endoplasmic reticulum-associated degradation (ERAD) system (By similarity).[UniProtKB/Swiss-Prot Function]

Product images:



Circular map for RC217546



Western blot validation of overexpression lysate (Cat# [LY420648]) using anti-DDK antibody (Cat# [TA50011-100]). Left: Cell lysates from untransfected HEK293T cells; Right: Cell lysates from HEK293T cells transfected with RC217546 using transfection reagent MegaTran 2.0 (Cat# [TT210002]).