

## Product datasheet for RC217541

### Asialoglycoprotein Receptor 2 (ASGR2) (NM\_080914) Human Tagged ORF Clone

#### Product data:

Product Type:	Expression Plasmids
Product Name:	Asialoglycoprotein Receptor 2 (ASGR2) (NM_080914) Human Tagged ORF Clone
Tag:	Myc-DDK
Symbol:	Asialoglycoprotein Receptor 2
Synonyms:	ASGP-R2; ASGPR2; CLEC4H2; HBXBP; HL-2
Mammalian Cell Selection:	Neomycin
Vector:	pCMV6-Entry (PS100001)
E. coli Selection:	Kanamycin (25 ug/mL)
ORF Nucleotide Sequence:	>RC217541 representing NM_080914 Red=Cloning site Blue=ORF Green=Tags(s)

TTTTGTAATACGACTCACTATAGGGCGGCCGGAATTCGTCGACTGGATCCGGTACCGAGGAGATCTGCC  
GCC**CGATCGCC**

ATGGCCAAGGACTTTCAAGATATCCAGCAGCTGAGCTCGGAGGAAAATGACCATCCTTTCCATCAAGGGC  
CACCTCTGCCAGCCCTGGCACAGCGTCTCTGCTCCATGGTCTGCTTCAGTCTGCTTGGCCTGAGCTT  
CAACATCCTGCTGCTGGTGGTCACTGTGTGACTGGGTCCCAAAGTGAGGGTCACAGAGGTGCACAGCTG  
CAAGCCGAGCTGCGGAGCCTGAAGGAAGCTTTCAGCAACTTCTCCTCGAGCACCTGACGGAGGTCCAGG  
CAATCAGCACCCACGGAGGCAGCGTGGGTGACAAGATCACATCCCTAGGAGCCAAGCTGGAGAAACAGCA  
GCAGGACCTGAAAGCAGATCACGATGCCCTGCTTCCATCTGAAGCACTTCCCGTGGACTGCGCTTC  
GTGGCCTGCCAGATGGAGCTCCTCCACAGCAACGGCTCCCAAAGGACCTGCTGCCCGTCAACTGGGTGG  
AGCACCAAGGCAGCTGCTACTGGTTCTCTCACTCCGGGAAGGCCTGGGCTGAGGCGGAGAAGTACTGCCA  
GCTGGAGAACGCACACCTGGTGGTCACTCAACTCCTGGGAGGAGCAGAAAATCATTGTACAACACAGAAC  
CCCTTCAATACCTGGATAGGTCTCACGGACAGTGTGGCTCTTGGAAATGGGTGGATGGCACAGACTATA  
GGCACAACATAAGAAGTGGGCTGTCACTCAGCCAGATAATTGGCACGGGCACGAGCTGGGTGGAAGTGA  
AGACTGTGTTGAAGTCCAGCCGGATGGCCGCTGGAACGATGACTTCTGCCTGCAGGTGTACCGCTGGGTG  
TGTGAGAAAAGGCGGAATGCCACCGCGAGGTGGCC

**ACGCGT**ACGCGGCCGCTCGAGCAGAAACTCATCTCAGAAGAGGATCTGGCAGCAAATGATATCCTGGATT  
ACAAGGATGACGACGATAAGGTTTAA



[View online »](#)

**Protein Sequence:** >RC217541 representing NM\_080914  
 Red=Cloning site Green=Tags(s)

MAKDFQDIQQLSSEENDHPFHQGPPLAQPLAQLCSMVCFSLALSFNILLVVICVTGSQSEGHGAQL  
 QAELRSLKEAFSNFSSSTL TEVQAISTHGGSVGDKITSLGAKLEKQQDLKADHDALLFHLKHFVDLRF  
 VACQMELLHSNGSQRTCCPVNWEVHQGSCYWF SHSGKAWAEAEKYCQLENAHLVVINSWEEQKFIVQHTN  
 PFNTWIGLTSDSGSWKWVDGTDYRHNKYNWAVTQPDNWHGHELGGSEDCVEVQPDGRWDDDFCLQVYRWV  
 CEKRRNATGEVA

TRTRPLEQKLISEEDLAANDILDYKDDDDKV

**Chromatograms:** [https://cdn.origene.com/chromatograms/mk6268\\_f06.zip](https://cdn.origene.com/chromatograms/mk6268_f06.zip)

**Restriction Sites:** SgfI-MluI

**Cloning Scheme:**



**ACCN:** NM\_080914

**ORF Size:** 876 bp

**OTI Disclaimer:** The molecular sequence of this clone aligns with the gene accession number as a point of reference only. However, individual transcript sequences of the same gene can differ through naturally occurring variations (e.g. polymorphisms), each with its own valid existence. This clone is substantially in agreement with the reference, but a complete review of all prevailing variants is recommended prior to use. [More info](#)

**OTI Annotation:** This clone was engineered to express the complete ORF with an expression tag. Expression varies depending on the nature of the gene.

**Components:** The ORF clone is ion-exchange column purified and shipped in a 2D barcoded Matrix tube containing 10ug of transfection-ready, dried plasmid DNA (reconstitute with 100 ul of water).

**Reconstitution Method:**

1. Centrifuge at 5,000xg for 5min.
2. Carefully open the tube and add 100ul of sterile water to dissolve the DNA.
3. Close the tube and incubate for 10 minutes at room temperature.
4. Briefly vortex the tube and then do a quick spin (less than 5000xg) to concentrate the liquid at the bottom.
5. Store the suspended plasmid at -20°C. The DNA is stable for at least one year from date of shipping when stored at -20°C.

**RefSeq:** [NM\\_080914.1](#), [NP\\_550436.1](#)

**RefSeq Size:** 1202 bp

**RefSeq ORF:** 879 bp

**Locus ID:** 433

**UniProt ID:** [P07307](#)

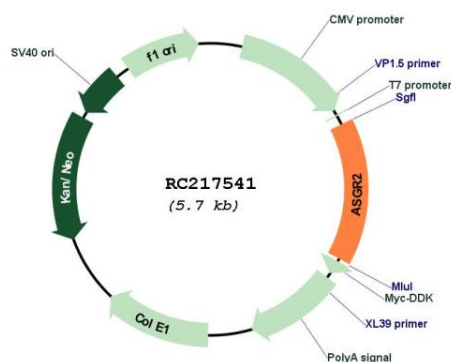
**Cytogenetics:** 17p13.1

**Protein Families:** Druggable Genome, Transmembrane

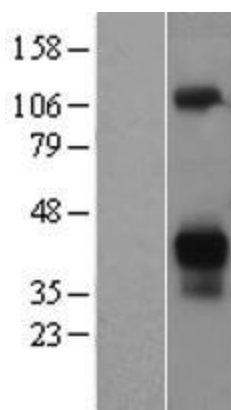
**MW:** 32.9 kDa

**Gene Summary:** This gene encodes a subunit of the asialoglycoprotein receptor. This receptor is a transmembrane protein that plays a critical role in serum glycoprotein homeostasis by mediating the endocytosis and lysosomal degradation of glycoproteins with exposed terminal galactose or N-acetylgalactosamine residues. The asialoglycoprotein receptor may facilitate hepatic infection by multiple viruses including hepatitis B, and is also a target for liver-specific drug delivery. The asialoglycoprotein receptor is a hetero-oligomeric protein composed of major and minor subunits, which are encoded by different genes. The protein encoded by this gene is the less abundant minor subunit. Alternatively spliced transcript variants encoding multiple isoforms have been observed for this gene. [provided by RefSeq, Jan 2011]

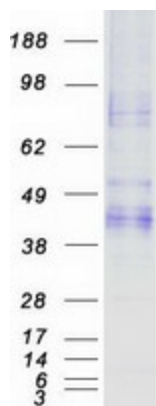
## Product images:



Circular map for RC217541



Western blot validation of overexpression lysate (Cat# [LY409001]) using anti-DDK antibody (Cat# [TA50011-100]). Left: Cell lysates from untransfected HEK293T cells; Right: Cell lysates from HEK293T cells transfected with RC217541 using transfection reagent MegaTran 2.0 (Cat# [TT210002]).



Coomassie blue staining of purified ASGR2 protein (Cat# [TP317541]). The protein was produced from HEK293T cells transfected with ASGR2 cDNA clone (Cat# RC217541) using MegaTran 2.0 (Cat# [TT210002]).