

## Product datasheet for **RC217538**

### IFRD1 (NM\_001550) Human Tagged ORF Clone

#### Product data:

Product Type:	Expression Plasmids
Product Name:	IFRD1 (NM_001550) Human Tagged ORF Clone
Tag:	Myc-DDK
Symbol:	IFRD1
Synonyms:	PC4; TIS7
Mammalian Cell Selection:	Neomycin
Vector:	pCMV6-Entry (PS100001)
E. coli Selection:	Kanamycin (25 ug/mL)



[View online »](#)

**ORF Nucleotide Sequence:**

>RC217538 ORF sequence  
 Red=Cloning site Blue=ORF Green=Tags(s)

TTTTGTAATACGACTCACTATAGGGCGGCCGGAATTCGTCGACTGGATCCGGTACCGAGGAGATCTGCC  
 GCC**CGCATCGCC**

ATGCCGAAGAACAAGAAGCGGAACACTCCCCACCGCGGTAGCAGTGCTGGCGGCGCGGGTCAAGAGCAG  
 CCGCAGCGACGGCGGCGACAGCAGGTGGCCAGCATCGAAATGTTACGCCTTTTAGTGATGAAGATGCATC  
 AATTGAAACAATGAGCCATTGCAGTGGTTATAGCGATCCTTCCAGTTTTGCTGAAGATGGACCAGAAGTC  
 CTTGATGAGGAAGGAAGCAAGAAGACCTAGAGTACAAGTTGAAGGGATTAATTGACCTAACCTGGATA  
 AGAGTGCAGAGACAAGGCAAGCAGCTCTTGAAGGTATTAATAAATGCAGTGGCTTCAAAAATGCTGTATGA  
 ATTTATCTGAAAGGAGAATGACTTTAACTGATAGCATTGAACGCTGCCTGAAAAAGGTAAGAGTGAT  
 GAGCAACGTGCAGCTGCAGCGTTAGCATCTGTTCTTTGTATTAGCTGGGCCCTGGAATTGAAAGTGAAG  
 AGATTTTGAAGAACTCTTGACCAATCCTAAAGAAAATCATTGTGATGGGTGAGTGTAGTGCAGGCTAG  
 GCAAACCTTGCAACTTGTCTTTGGTGTGTTGCTGTTTTATTGCCACAGATGACATTACTGAACTATACTCA  
 ACTCTGGAATGTTTGGAAAATATCTTCACTAAATCCTATCTCAAAGAGAAAGACACTACTGTTATTTGCA  
 GCACTCCTAATACAGTGCTTCATATCAGCTCTCTTCTTGCATGGACACTACTGCTGACCATATGCCAAAT  
 CAATGAAGTGAAGAAAAGCTTGAGATGCATTTCCATAAGCTTCCAAGCCTCCTCTCTTGTGATGATGTA  
 AACATGAGAATAGCTGCTGGTGAATCTTTGGCACTTCTCTTTGAATTGGCCAGAGGAATAGAGAGTGACT  
 TTTTTTATGAAGACATGGAGTCTTGGACGAGATGCTTAGGGCCTTGGCAACAGATGGAATAAACACCG  
 GGCCAAAGTGGACAAGAGAAAGCAGCGGTGAGTTTTCAGAGATGCTGAGGGCAGTGGAGAACGGGAT  
 TTTCCAACAGAAACCATTAAATTTGGTCTGAACGCATGTATATTGATTGCTGGGTAAAAAACACACCT  
 ATGACACCTTTAAGGAGTTCTTGGATCAGGGATGCAGTACCAGTCAAATGAATTCCTTCGAAA  
 TGTATTTGAACCTTGGACCCAGTGTGCTTGTGCTGCAACGCTTAAAACGATGAAGATTTCTCGTTTC  
 GAAAGGCATTTATATAACTCTGCAGCCTTCAAAGCTCGAACCAAAGCTAGAAGCAAATGTCGAGATAAGA  
 GAGCAGATGTTGGAGAATTCTTC

**ACGCGT**ACGCGGCCGCTCGAGCAGAAACTCATCTCAGAAGAGGATCTGGCAGCAAATGATATCCTGGATT  
 ACAAGGATGACGACGATAAGGTTTAA

**Protein Sequence:**

>RC217538 protein sequence  
 Red=Cloning site Green=Tags(s)

MPKNKKRNTPHRGSSAGGGGSGAAAATAATAGGQHRNVQPFSDASDIETMSHCSGYSDFSSFAEDGPEV  
 LDEEGTQEDLEYKLGKGLIDLTDKSAKTRQAALLEGIKNALASKMLYEFILERRMTLTDSEIERCLKKGGKSD  
 EQRAAAALASVLCIQLGPGIESEEILKTLGPILKKIICDGSASMQARQTCATCFGVCCFIATDDITELYS  
 TLECLENIFTKSYLKEKDTTVICSTPNTVLHISLLAWTLLLITCPINEVKKKLEMHFKLPSLLSCDDV  
 NMRIAAGESLALLFELARGIESDFFYEDMESLTQMLRALATDGNKHRKVDKQKRSVFRDVLRAVEERD  
 FPTETIKFGPERMYIDCWVKKHTYDTFKEVLGSGMQYHLQSNFLRNVFELGPPVMLDAATLKTMKISRF  
 ERHLYNSAAFKARTKARSKCRDKRADVGEFF

**TR**TRPLEQKLISEEDLAANDILDYKDDDDKV

**Chromatograms:**

[https://cdn.origene.com/chromatograms/mk6541\\_f05.zip](https://cdn.origene.com/chromatograms/mk6541_f05.zip)

**Restriction Sites:**

Sgfl-Mlul

**Cloning Scheme:**


**ACCN:** NM\_001550

**ORF Size:** 1353 bp

**OTI Disclaimer:** The molecular sequence of this clone aligns with the gene accession number as a point of reference only. However, individual transcript sequences of the same gene can differ through naturally occurring variations (e.g. polymorphisms), each with its own valid existence. This clone is substantially in agreement with the reference, but a complete review of all prevailing variants is recommended prior to use. [More info](#)

**OTI Annotation:** This clone was engineered to express the complete ORF with an expression tag. Expression varies depending on the nature of the gene.

**Components:** The ORF clone is ion-exchange column purified and shipped in a 2D barcoded Matrix tube containing 10ug of transfection-ready, dried plasmid DNA (reconstitute with 100 ul of water).

**Reconstitution Method:**

1. Centrifuge at 5,000xg for 5min.
2. Carefully open the tube and add 100ul of sterile water to dissolve the DNA.
3. Close the tube and incubate for 10 minutes at room temperature.
4. Briefly vortex the tube and then do a quick spin (less than 5000xg) to concentrate the liquid at the bottom.
5. Store the suspended plasmid at -20°C. The DNA is stable for at least one year from date of shipping when stored at -20°C.

**RefSeq:** [NM\\_001550.3](#)

**RefSeq Size:** 3305 bp

**RefSeq ORF:** 1356 bp

**Locus ID:** 3475

**UniProt ID:** [O00458](#)

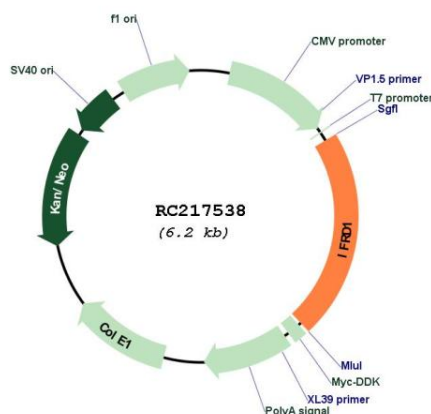
**Cytogenetics:** 7q31.1

**Domains:** IFRD\_C, IFRD

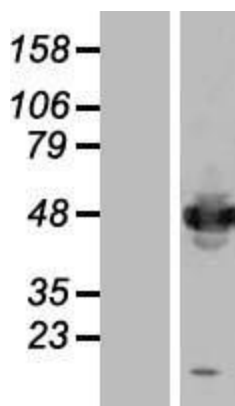
**MW:** 50.3 kDa

**Gene Summary:** This gene is an immediate early gene that encodes a protein related to interferon-gamma. This protein may function as a transcriptional co-activator/repressor that controls the growth and differentiation of specific cell types during embryonic development and tissue regeneration. Mutations in this gene are associated with sensory/motor neuropathy with ataxia. This gene may also be involved in modulating the pathogenesis of cystic fibrosis lung disease. Alternate splicing results in multiple transcript variants. [provided by RefSeq, Oct 2010]

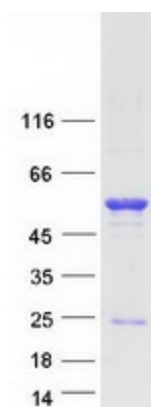
**Product images:**



Circular map for RC217538



Western blot validation of overexpression lysate (Cat# [LY419866]) using anti-DDK antibody (Cat# [TA50011-100]). Left: Cell lysates from untransfected HEK293T cells; Right: Cell lysates from HEK293T cells transfected with RC217538 using transfection reagent MegaTran 2.0 (Cat# [TT210002]).



Coomassie blue staining of purified IFRD1 protein (Cat# [TP317538]). The protein was produced from HEK293T cells transfected with IFRD1 cDNA clone (Cat# RC217538) using MegaTran 2.0 (Cat# [TT210002]).