

Product datasheet for RC217529

Syntaxin 2 (STX2) (NM_194356) Human Tagged ORF Clone

Product data:

Product Type:	Expression Plasmids
Product Name:	Syntaxin 2 (STX2) (NM_194356) Human Tagged ORF Clone
Tag:	Myc-DDK
Symbol:	Syntaxin 2
Synonyms:	EPIM; EPM; STX2A; STX2B; STX2C
Mammalian Cell Selection:	Neomycin
Vector:	pCMV6-Entry (PS100001)
E. coli Selection:	Kanamycin (25 ug/mL)
ORF Nucleotide Sequence:	>RC217529 representing NM_194356 Red=Cloning site Blue=ORF Green=Tags(s)

TTTTGTAATACGACTCACTATAGGGCGGCCGGAATTCGTCGACTGGATCCGGTACCGAGGAGATCTGCC
GCC**CGGATCGCC**

ATGCGGGACCGGCTGCCAGACCTGACGGCGTGTAGGAAGAATGATGATGGAGACACAGTTGTTGTGGTTG
AGAAAGATCATTTTCATGGATGATTTCTTCCATCAGGTGGAGGAGATTAGAAACACTATTGATAAAAATAAC
TCAATATGTTGAAGAAGTAAAGAAAAACCACAGCATCATTCTTTCTGCACCAAACCGGAAGGAAAAATA
AAAGAAGAGCTTGAAGATCTGAACAAAGAAATCAAGAAAACGCGAATAAAATTCGAGCCAAGTTAAAGG
CTATTGAACAAAGTTTTGATCAGGATGAGAGTGGGAACCGGACTTCAGTGGATCTTCGGATACGAAGAAC
CCAGCATTTCGGTGTCTCGGAAGTTTGTGGAAGCCATGGCGGAGTACAATGAGGCACAGACTCTGTTT
CGGGAGCGGAGCAAAGGCCCATCCAGCGCCAGCTGGAGATAACTGGGAGAACCACCACAGACGACGAGC
TAGAAGAGATGCTGGAGAGCGGGAAGCCATCCATCTTCACTTCCGACATTATATCAGATTCACAAATTAC
TAGACAAGCTCTCAATGAAATCGAGTCACGTCACAAGGACATCATGAAGCTGGAGACCAGCATCCGAGAG
TTGCATGAGATGTTTCATGGACATGGCTATGTTTGTGGAGACTCAGGGTGAATGATCAACAACATAGAAA
GAAATGTTATGAATGCCACAGACTATGTAGAACACGCTAAAGAAGAAACAAAAAAGCTATCAAATATCA
GAGCAAGGCAAGAAGGAAAAAGTGATAATTATTGCTGTGTCAAGTGGTTCTGTTGCCATAATCGCTCTA
ATTATTGGCTTTCAGTTGGCAA

ACGCGTACGCGGCCGCTCGAGCAGAAACTCATCTCAGAAGAGGATCTGGCAGCAAATGATATCCTGGATT
ACAAGGATGACGACGATAAGGTTTAA



[View online »](#)

Protein Sequence: >RC217529 representing NM_194356
Red=Cloning site Green=Tags(s)

MRDRLPDLTACRKNDGDVTVVVEKDFMDDFFHQVEEIRNTIDKITQYVEEVKKNHSIILSAPNPEGKI
 KEELEDLNKEIKKTANKIRAKLKAIEQSFQDESGNRTSVDLRIRRTQHSVLSRKFVEAMAEYNEAQTFLF
 RERSKGRIGRQLEITGRITTTDDELEEMLESGKPSIFTSDIISDSQITRQALNEIESRHKDINKLETISIRE
 LHEMFMDAMFVETQGEMINNIERNVMNATDYVEHAKEETKKAIKYQSKARRKKWIIIAVSVVLVAIAL
 IIGLSVGK

TRTRPLEQKLISEEDLAANDILDYKDDDDKV

Chromatograms: https://cdn.origene.com/chromatograms/mk6121_g08.zip

Restriction Sites: SgfI-MluI

Cloning Scheme:



ACCN: NM_194356

ORF Size: 864 bp

OTI Disclaimer: The molecular sequence of this clone aligns with the gene accession number as a point of reference only. However, individual transcript sequences of the same gene can differ through naturally occurring variations (e.g. polymorphisms), each with its own valid existence. This clone is substantially in agreement with the reference, but a complete review of all prevailing variants is recommended prior to use. [More info](#)

OTI Annotation: This clone was engineered to express the complete ORF with an expression tag. Expression varies depending on the nature of the gene.

Components: The ORF clone is ion-exchange column purified and shipped in a 2D barcoded Matrix tube containing 10ug of transfection-ready, dried plasmid DNA (reconstitute with 100 ul of water).

Reconstitution Method:

1. Centrifuge at 5,000xg for 5min.
2. Carefully open the tube and add 100ul of sterile water to dissolve the DNA.
3. Close the tube and incubate for 10 minutes at room temperature.
4. Briefly vortex the tube and then do a quick spin (less than 5000xg) to concentrate the liquid at the bottom.
5. Store the suspended plasmid at -20°C. The DNA is stable for at least one year from date of shipping when stored at -20°C.

RefSeq: [NM_194356.4](#)

RefSeq Size: 3469 bp

RefSeq ORF: 867 bp

Locus ID: 2054

UniProt ID: [P32856](#)

Cytogenetics: 12q24.33

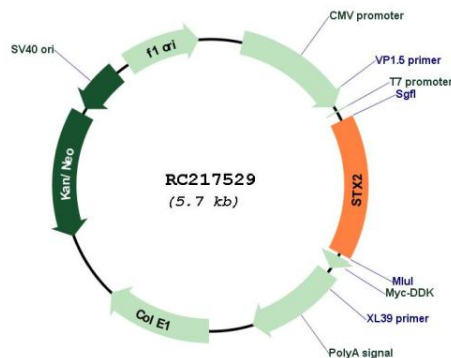
Protein Families: Druggable Genome, Transmembrane

Protein Pathways: SNARE interactions in vesicular transport

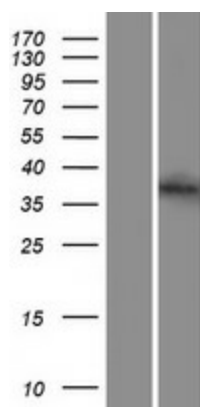
MW: 33.2 kDa

Gene Summary: The product of this gene belongs to the syntaxin/epimorphin family of proteins. The syntaxins are a large protein family implicated in the targeting and fusion of intracellular transport vesicles. The product of this gene regulates epithelial-mesenchymal interactions and epithelial cell morphogenesis and activation. Alternatively spliced transcript variants encoding different isoforms have been identified. [provided by RefSeq, Jul 2008]

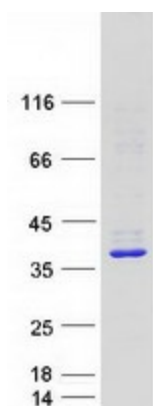
Product images:



Circular map for RC217529



Western blot validation of overexpression lysate (Cat# [LY403665]) using anti-DDK antibody (Cat# [TA50011-100]). Left: Cell lysates from untransfected HEK293T cells; Right: Cell lysates from HEK293T cells transfected with RC217529 using transfection reagent MegaTran 2.0 (Cat# [TT210002]).



Coomassie blue staining of purified STX2 protein (Cat# [TP317529]). The protein was produced from HEK293T cells transfected with STX2 cDNA clone (Cat# RC217529) using MegaTran 2.0 (Cat# [TT210002]).